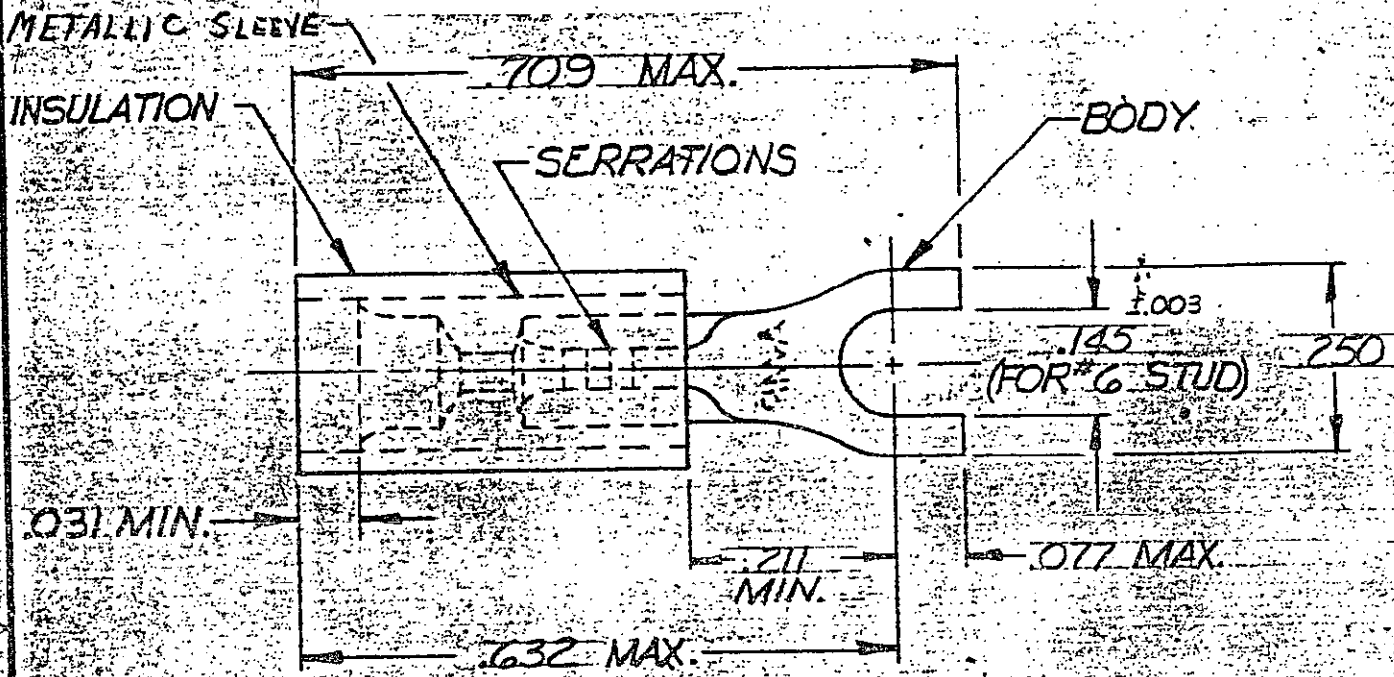


DRAWING MADE IN AMERICAN

© 1972 BY AMP INCORPORATED
 RIGHTS RESERVED
 COVERED BY
 PATENT

REPRODUCED
 WITHOUT PERMISSION
 OF AMP INCORPORATED

REV	DESCRIPTION	DATE	APPROV
0	NPS 72-0122	10/6/72	Same
A	.050-.105 WAS 050-082 PC-75.74 <small>REVISED TOOL NOTE</small>	10-9-75	Same
B	REL FOR P-8986	11-14-79	Same
C	INACTIVE -1 P-9381	1-30-82	Same
D	OBSOLETE -1 G-2340	1/6/87	Same
E	REV 10 G10-0094-98	2/1/99	Same



TONGUE MATERIAL THK. = .027
 FOR .050 TO .095 WIRE INS. DIA.
 MUST BE CRIMPED WITH 22-18 OR 22-16 PIDG. (RED) TO

53115-1 ON TAPE	53115-2	BODY: COPPER (ASTM B152) TIN PL. (ASTM B545)
WIRE TERMINAL	53115-1 OBSOLETE	SLEEVE: COPPER (ASTM B152) TIN PL. (ASTM B545)
QTY	DESCRIPTION	PART NO.
		MATERIAL & FINISH
UNLESS OTHERWISE SPECIFIED DIMENSIONS ARE IN INCHES TOLERANCES ON: DECIMALS ±.008 ANGLES ±5°		CONTRACT NO. 11
MATERIAL		DR. <i>Low Bail</i> 6-6-72
SEE TABLE		CHK <i>Don Emmerich</i> 6-7-72
		APPD <i>Abel</i> 6-15-72
		REL
		DSGN APPD
		OTHER APPD
		AMP INCORPORATED HARRISBURG, PENNSYLVANIA
		NAME WIRE TERMINAL PIDG TM -SPADE WIRE SIZE: 26-24
		SIZE A
		CODE IDENT NO. 00779
		NUMBER 53115
		SHEET 1 OF 1

单击下面可查看定价，库存，交付和生命周期等信息

[>>TE Connectivity\(泰科\)](#)