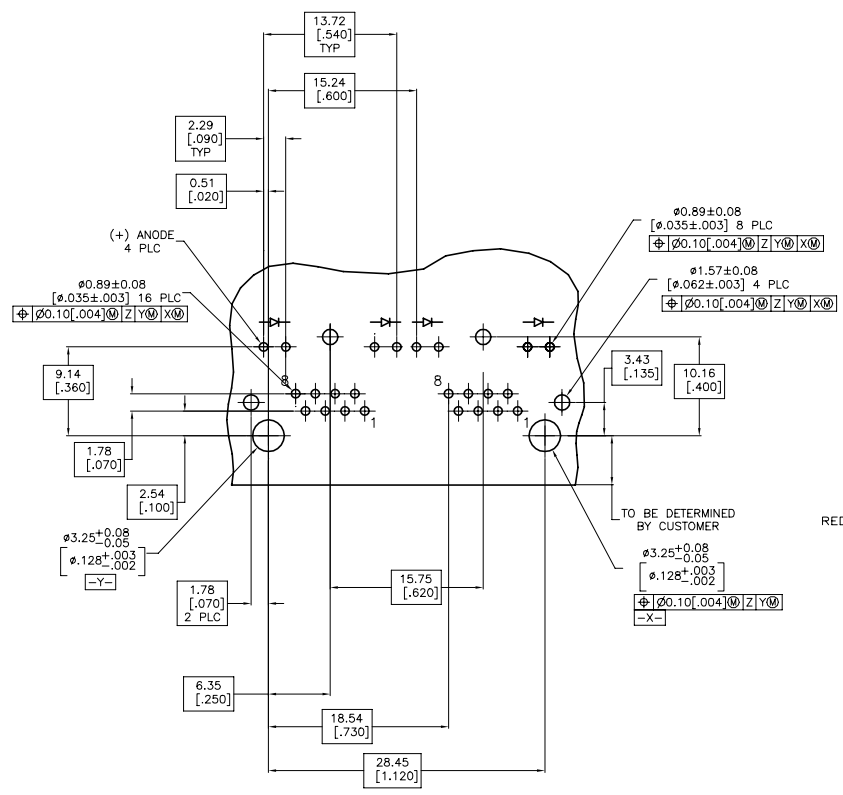
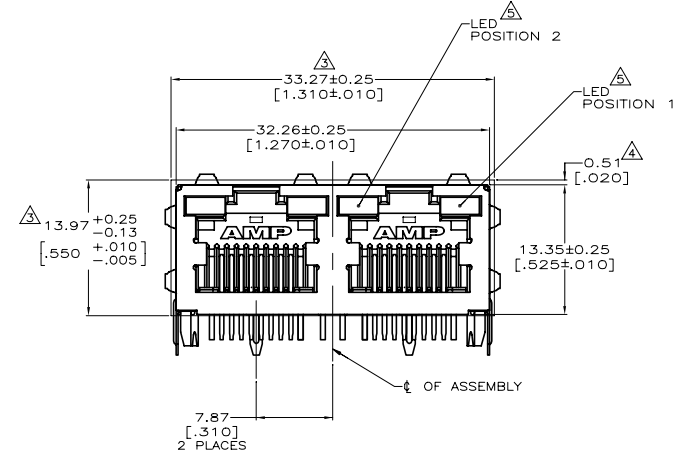
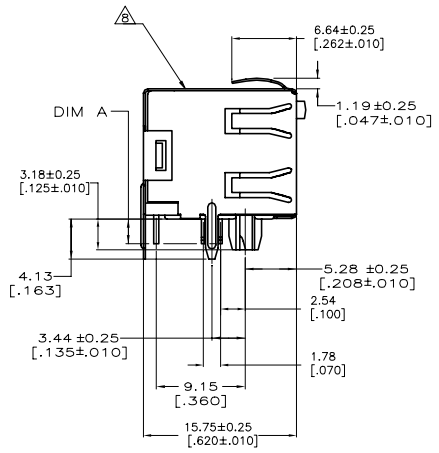


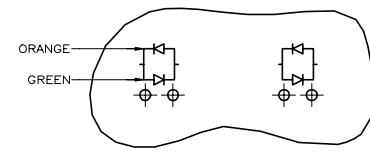
REVISIONS				
REV	DATE	DESCRIPTION	BY	APP'D
G4	29AUG2020	ECO-18-014918	RR	SH



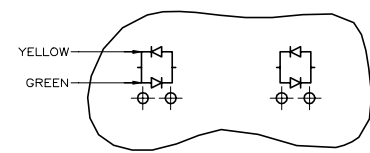
RECOMMENDED PRINTED CIRCUIT BOARD LAYOUT (COMPONENT SIDE)

- MATERIAL:
HOUSING - HIGH TEMPERATURE THERMOPLASTIC,
COLOR: BLACK, UL94V-0
TERMINALS - 0.36[.014] THICK PHOS BRONZE
PLATED WITH 3.81µm[.000150] MIN THICK
BRIGHT TIN LEAD IN SOLDER AREA - 1.27µm[.000050]
MIN GOLD IN LOCALIZED PLATE AREA. ENTIRE
TERMINAL PLATED WITH 1.27µm[.000050] MIN
THICK NICKEL.
SHIELD - 0.196[.0077] THICK COPPER ZINC ALLOY
PREPLATED WITH 1.27µm[.000050] MIN SATIN
NICKEL WITH 2.03µm[.000080] MIN TIN POST
DIPPED ON PCB GROUND TABS
LIGHT EMITTING DIODE (LED) - DIFFUSED EPOXY
LENS, 0.51 X 0.51[.020 X .020] CARBON STEEL
WIREFRAME LEADS PLATED WITH 8.89µm[.000350]
TIN/COPPER OVER 2.03µm[.000080] SILVER OVER
1.02µm[.000040] NICKEL UNDERPLATE OVER
2.03µm[.000080] COPPER UNDERPLATE

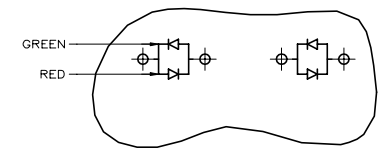
- THIS MODULAR JACK WITH INTEGRATED LED IS NOT
IR REFLOW SOLDERING PROCESS COMPATIBLE.
- △ SUGGESTED PANEL OPENING DIMENSIONS.
 - △ SUGGESTED CLEARANCE BETWEEN TOP OF CONNECTOR
AND TOP PANEL OPENING.
 - △ SEE TABLE FOR COLOR OF LEDS AND NUMBER
REQUIRED.
- OBSOLETE PARTS: OBSOLETE CIS STREAMLINING PER D.RENAUD/D.SINISI
 - MANUFACTURING DATE CODE:
LOCATED APPROX. AS SHOWN.
FIRST 2 DIGITS= LAST 2 DIGITS OF YEAR.
NEXT 2 DIGITS= MANUFACTURING WORK WEEK.
LAST DIGIT= DAY OF WEEK WITH SUNDAY=1.



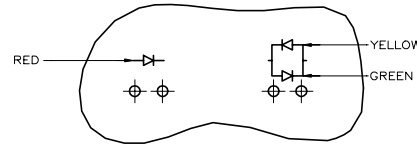
LED CURRENT DIAGRAM
1116353-7 ONLY
OBSOLETE



LED CURRENT DIAGRAM
1116353-8 ONLY



LED CURRENT DIAGRAM
1-1116353-3 ONLY
**SUPERSEDED
BY 1-6116353-3**



LED CURRENT DIAGRAM
2-1116353-3 ONLY
SUPERSEDED

INDICATOR COLOR FOR EACH HOUSING	POSITION 2	POSITION 1	PART NUMBER
YELLOW/GREEN	YELLOW	GREEN	2-4416353-8
GREEN	GREEN	GREEN	2-1116353-4
SUPERSEDED	RED	YELLOW/GREEN	2-1116353-3
SUPERSEDED	RED/GREEN	RED/GREEN	1-1116353-3
OBSOLETE	YELLOW/GREEN	YELLOW/GREEN	1116353-8
OBSOLETE	ORANGE/GREEN	ORANGE/GREEN	1116353-7
OBSOLETE	YELLOW	YELLOW	1116353-6
OBSOLETE	GREEN	GREEN	1116353-5
OBSOLETE	GREEN	YELLOW	1116353-4
OBSOLETE	YELLOW	-	1116353-3
SUPERSEDED	-	GREEN	1116353-2
OBSOLETE	YELLOW	GREEN	1116353-1

SOLDERTAIL LENGTH, DIM A		INDICATOR COLOR FOR EACH HOUSING		PART NUMBER	
THIS DRAWING IS A CONTROLLED DOCUMENT.					
DRAWN BY: JLD/L.MAYER 080C72007		CHECKED BY: S.WESTMAN 080C72007		DATE: 08/29/2020	
DIMENSIONS: mm (INCHES)		APPROVED BY: S.ELCKINGER 080C72007		NAME: S.WESTMAN	
0 PLC ± =		1 PLC ± = 0.25(0.010)		PRODUCT SPEC: INVERTED MODULAR JACK ASSEMBLY, 1X2, SHIELDED, PANEL GROUNDS WITH LEADS	
2 PLC ± = 0.38(0.015)		3 PLC ± = 0.51(0.020)		APPLICATION SPEC: 108-1163-4	
4 PLC ± = 0.64(0.025)		5 PLC ± = 0.76(0.030)		SIZE: 114-2154	
MATERIAL: SEE NOTE 1		FINISH: SEE NOTE 1		WEIGHT: 0.000000	
DATE CODE: 114-2154		DRAWING NO: 100779		REV: 1116353	
CUSTOMER DRAWING		SCALE: 4:1		SHEET: 1 of 1	

单击下面可查看定价，库存，交付和生命周期等信息

[>>TE Connectivity\(泰科\)](#)