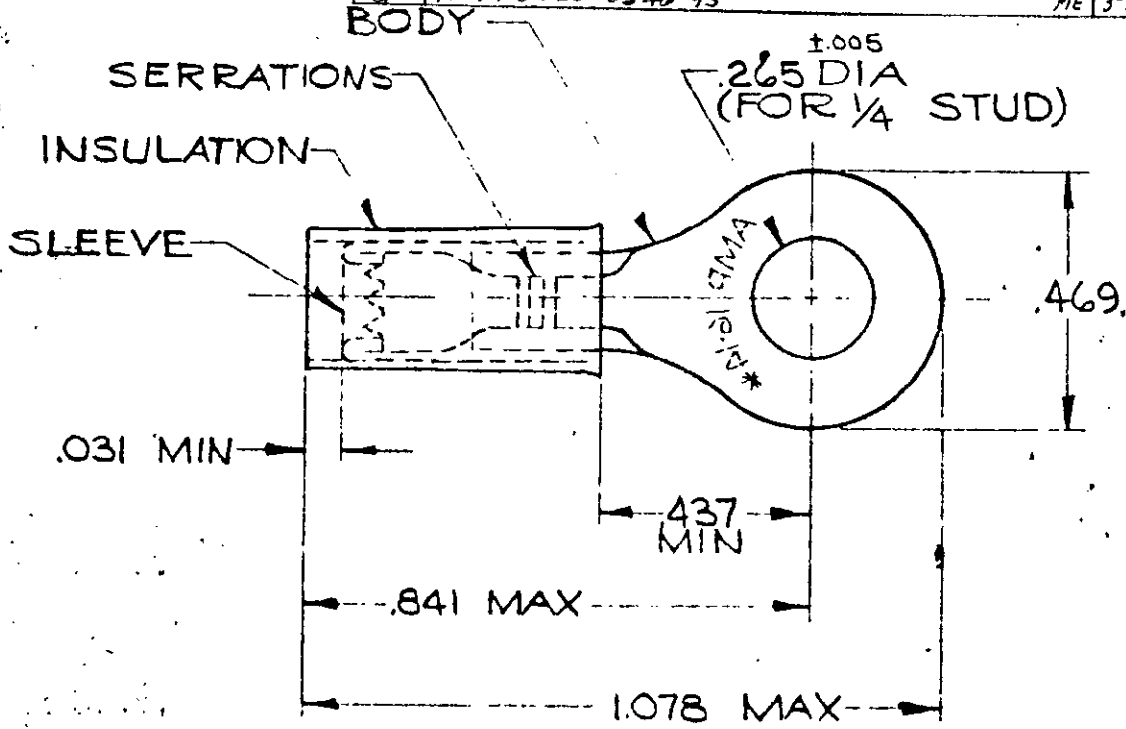


DRAWING MADE IN AMERICAN PROJECTION

LOC G PRINT DIST 14

© 1958 BY AMP INCORPORATED, ALL RIGHTS RESERVED. AMP PRODUCTS COVERED BY PATENTS AND/OR PATENTS PENDING.

REVISIONS			
LTR	DESCRIPTION	DATE	APPROVED
C	REDRAWN, REV. & ADDED TAPE NO. P-6079	3-5-70	FCY
D	2-1 INACTIVE PER P-9360	1-11-82	JRZ
E	REACTIVATE 2-1 P9887	2-24-83	ZY
F	REV PER G-4732	7/26/88	JF
G	REV 10720-0546-95	3-22-95	ME MB



FOR .115 TO .170 WIRE INSULATION DIA.
TONGUE MATERIAL THK. = .031 ±.002

325034 ON TAPE	2-325034-1	BODY: COPPER (QQ-C-576) TIN PL (MIL-T-10727)
WIRE TERMINAL	325034	SLEEVE: COPPER (QQ-C-576)
QTY	DESCRIPTION	PART NO.
		MATERIAL & FINISH
UNLESS OTHERWISE SPECIFIED DIMENSIONS ARE IN INCHES TOLERANCES ON: DECIMALS ± .008 ANGLES ± 5°	CONTRACT NO.	AMP INCORPORATED HARRISBURG, PENNSYLVANIA
	DR. Wayne Williams 2-25-70	
	CHK. P. Youngblood 3-5-70	
	APPD. Swibel 3-5-70	
	REL. P. Youngblood 3-5-70	
MATERIAL	SEE TABLE	NAME
		WIRE TERMINAL P. I. D. G. RING TONGUE WIRE SIZE: 16-14
	OTHER APPD.	SIZE
		A
		CODE IDENT NO.
		00779
		NUMBER
		325034
		SCALE
		SHEET
		OF

单击下面可查看定价，库存，交付和生命周期等信息

[>>TE Connectivity\(泰科\)](#)