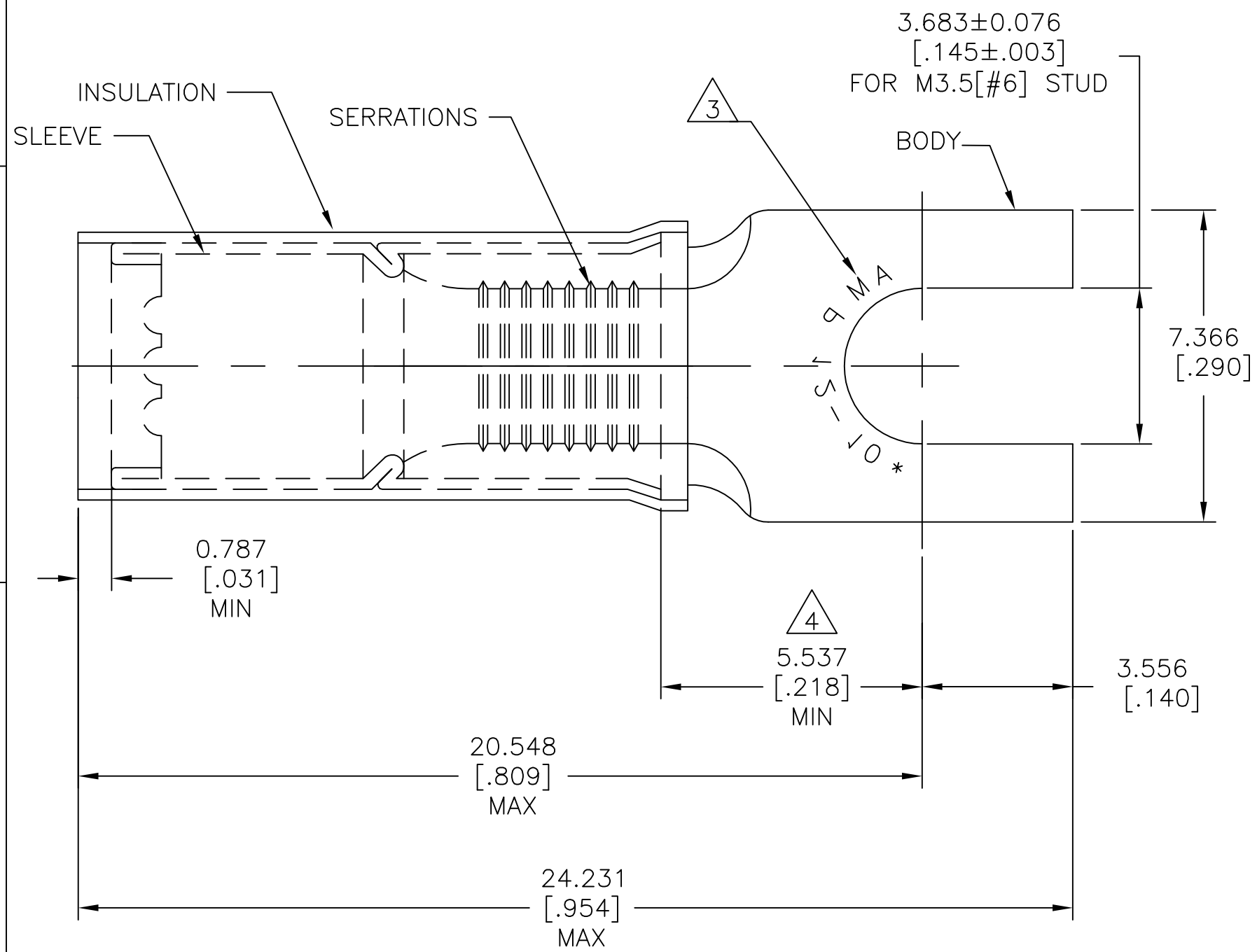


REVISIONS					
P	LTR	DESCRIPTION	DATE	DWN	APVD
	D2	NEW DRAWING PER ECO-11-019045	03APR12	KH	DR
	D3	REVISED PER ECO-17-007400	23NOV2017	RS	DR



AMP WIRE RANGE	Listed FILE E13288	LR7189 Certified
12-10 AWG SOLID OR STRANDED	12-10 AWG SOLID OR STRANDED	12-10 AWG SOLID OR STRANDED

- 1 WIRE INSULATION $\phi 3.810[\phi.150]$ TO $\phi 5.842[\phi.230]$
- 2 BODY MATERIAL THK: $1.016\pm 0.051[.040\pm.002]$
- 3 STAMP AMP 12-10* APPROX AS SHOWN.
- 4 APPLIES FROM EDGE OF METAL WIRE BARREL TO CENTER OF STUD.
- 5 MATERIAL: BODY & SLEEVE: COPPER PER ASTM B152. INSULATION : NYLON
- 6 FINISH: BODY & SLEEVE: TIN PLATE PER ASTM B545. INSULATION: COLOR-YELLOW.

2500	ON TAPE REEL	1-322985-0
500	LOOSE PIECE	322985
QTY	PACKAGE TYPE	PART NO

AMP INCORPORATED
CUSTOMER SERVICE SYSTEMS

FOR ADDITIONAL PRODUCT INFORMATION OR COPIES OF DRAWINGS AND TECHNICAL DOCUMENTS
 PRODUCT INFORMATION CENTER
 1-800-522-6752

FOR APPLICATION TOOLING INFORMATION
 TOOLING ASSISTANCE CENTER
 1-800-722-1111

FOR ORDER ENTRY
 1-800-526-5142

RECOMMENDED OPERATING TEMPERATURE:
 105°C [221°F]

VOLTAGE RATING:
 300V MAX

WIRE CROSS SECTIONAL AREA RANGE:
 2.62-6.64mm² [5,180-13,100] CIR.MIL
 SOLID OR STRANDED

THIS DRAWING IS A CONTROLLED DOCUMENT.

DIMENSIONS:
 mm [INCHES]

TOLERANCES UNLESS OTHERWISE SPECIFIED:

0 PLC ± -
 1 PLC ± -
 2 PLC ± -
 3 PLC ± 0.127[.005]
 4 PLC ± -
 ANGLES ± 5°

MATERIAL

FINISH

DWN KIRAN HOLAL 03APR12	TE Connectivity		
CHK ROHDE DANIEL 03APR12			
APVD ROHDE DANIEL 03APR12	NAME		
PRODUCT SPEC UL 486 A-B	WIRE TERMINAL P.I.D.G SPADE WIRE SIZE 12-10 AWG		
APPLICATION SPEC 114-2156	SIZE	CAGE CODE	DRAWING NO
WEIGHT -	A3	00779	C=322985
CUSTOMER DRAWING	SCALE 8:1	SHEET 1 OF 1	REV D3

单击下面可查看定价，库存，交付和生命周期等信息

[>>TE Connectivity\(泰科\)](#)