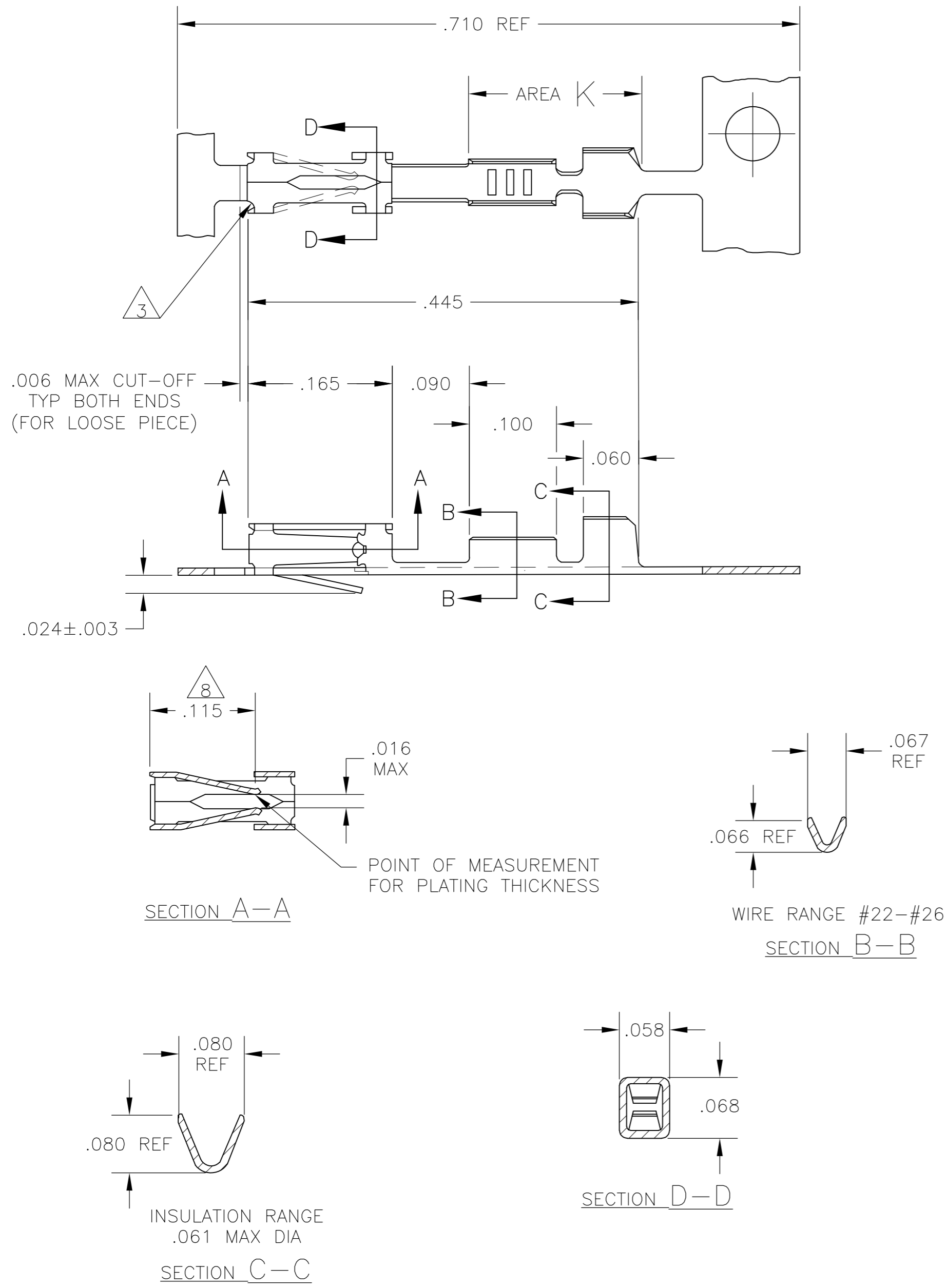


THIS DRAWING IS UNPUBLISHED. RELEASED FOR PUBLICATION
 © COPYRIGHT - By - ALL RIGHTS RESERVED.

LOC		DIST		REVISIONS			
P	LTR	DESCRIPTION		DATE	DWN	APVD	
	J2	REVISED PER ECO-11-004820		11MAR11	RK	HMR	



1. REELED FOR MINI APPLICATOR.
3. CUT OUTS ON BOX AT MANUFACTURER'S OPTION.
4. .000015 GOLD ON CONTACT AREA, .000100-.000200 BRIGHT TIN OR BRIGHT TIN-LEAD IN CRIMP AREA K, ALL OVER .000050 NICKEL.
5. .000030 GOLD ON CONTACT AREA, .000100-.000200 BRIGHT TIN OR BRIGHT TIN-LEAD IN CRIMP AREA K, ALL OVER .000050 NICKEL.
6. SHEARED EDGES PERMITTED TO BE UNPLATED.
7. .000100-.000200 BRIGHT TIN-LEAD OVER .000030 NICKEL.
8. POINT OF MEASUREMENT FOR PLATING THICKNESS (INSIDE BEAMS)
9. OBSOLETE PART NUMBER
10. SUPERCEDED BY 103171-5.
11. .000015 GOLD ON CONTACT AREA, MATTE TIN IN CRIMP AREA K, ALL OVER .000050 NICKEL.
12. .000030 GOLD ON CONTACT AREA, MATTE TIN IN CRIMP AREA K, ALL OVER .000050 NICKEL.
13. OBSOLETE PARTS: OBSOLETE CIS STREAMLINING PER D.RENAUD/D.SINISI

5-103171-5	12 6	5-103171-4
13 5-103171-2	11 6	5-103171-1
9 -8	6 7	9 -7
103171-5	5 6	103171-4
103171-2	4 6	103171-1
LOOSE PIECE PART NO	FINISH	PART NUMBER

THIS DRAWING IS A CONTROLLED DOCUMENT.		DWN	31 MAR 83	STE TE Connectivity	
DIMENSIONS: INCHES		CHK	-		
TOLERANCES UNLESS OTHERWISE SPECIFIED:		APVD	11 APR 83	NAME	
0 PLC ± -		PRODUCT SPEC		CONTACT, RECEPTACLE, MOD IV 1/2	
1 PLC ± -		APPLICATION SPEC		CRIMP SNAP-IN FOR 22-26 AWG WIRE	
2 PLC ± -		WEIGHT		SIZE	CAGE CODE
3 PLC ± .005		CUSTOMER DRAWING		A2	00779
4 PLC ± -		SCALE		DRAWING NO	
ANGLES ± -		SHEET		RESTRICTED TO	
FINISH		SCALE 8:1		A2 00779 C=103171	
SEE TABLE		SHEET 1 of 1		REV J2	

单击下面可查看定价，库存，交付和生命周期等信息

[>>TE Connectivity\(泰科\)](#)