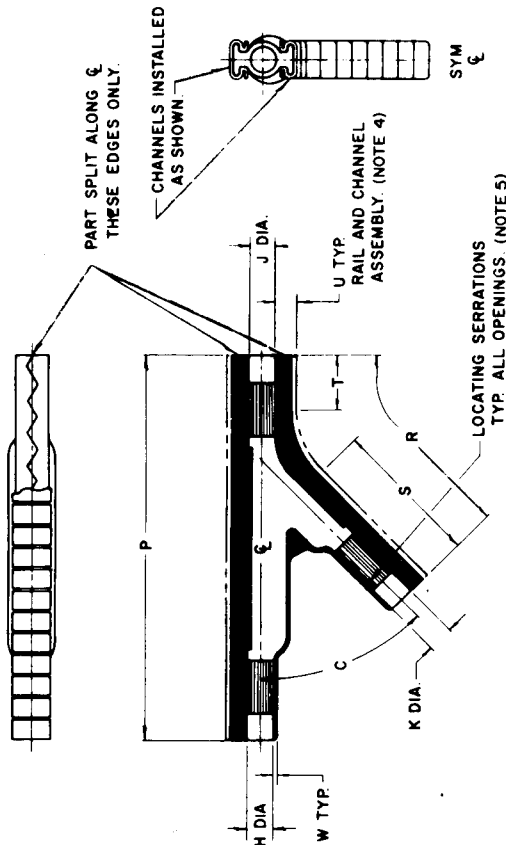


THERMOFIT • SPECIFICATION CONTROL DRAWING • MOLDED PARTS

1. All dimensions are in inches; all angles are in degrees.
2. Dimensions appearing in table below are as follows:
a - As supplied b - After unrestricted recovery
3. Weight shown in table of dimensions is based on polyolefin part.
4. See Drawing 003A001 for channel dimensions.
Two channels supplied with each part.
5. See Drawing 202C221-301 for convolex tubing adaptor.

NOTES



Matl No.	Description	Rayclad Matl. Spec.	Specific Grav. Max.
3	Polyolefin	RT-301	1.40

ORDERING INFORMATION

Add material number as suffix to part number;
Example - Order 341A113-3 when polyolefin is required.

TABLE OF DIMENSIONS

PART NO.	H & J		K		P		R		S		T		U		W		C		Weight	
	Min	Max	Min	Max	±10%	±10%	±10%	±10%	±10%	±10%	±10%	±10%	±20%	±20%	±10°	±10°	lbs	Max		
	a	b	a	b	a	b	a	b	a	b	a	b	a	b	a	b	a	b		
341A113-	.76	.25	.76	.25	3.57	3.57	2.57	2.57	-	1.36	-	.50	-	.17	-	.04	-	45		.034
341A123-	1.00	.51	.87	.42	5.17	5.17	4.33	4.33	-	2.83	-	.75	-	.19	-	.06	-	45		.055
341A134-	1.46	.77	1.10	.39	5.77	5.77	5.17	5.17	-	3.29	-	1.00	-	.21	-	.07	-	45		.060
PART NO.	This Part Fits		Rayclad Convolex Size		Length		No. Sections		Quantity											
	H & J		K		P	R	P	R												
	341A113-	9/30 - 3/8	9/32 - 3/8	3.57	2.57	18	13	2												
341A123-	3/8 - 5/8	9/32 - 1/2	5.17	4.33	26	22	2													
341A134-	5/8 - 1	9/32 - 5/8	5.77	5.17	29	26	2													

Raychem

DD	PART DESCRIPTION	REV LTR
DRN	TRANSITION, 45°, WRAPAROUND	341A113 thru 134
CHK D		
AUTH		
HP		

DATE	REV LTR
February 26, 1979	D

单击下面可查看定价，库存，交付和生命周期等信息

[>>TE Connectivity\(泰科\)](#)