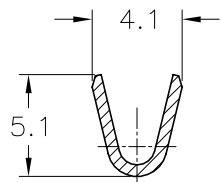
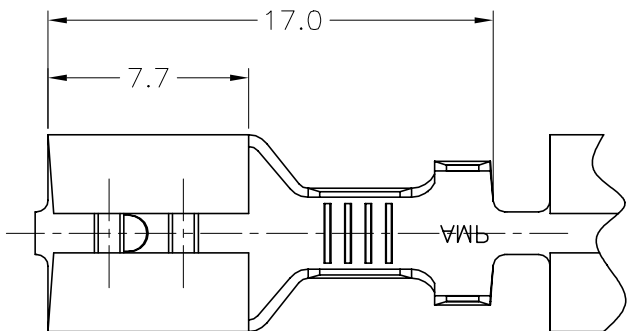
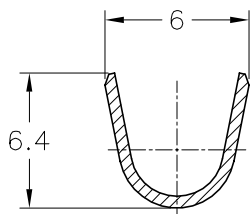


REVISIONS					
變更					
P	LTR	DESCRIPTION	DATE	DWN	APVD
	E3	REDRAWN PER ECR-21-100526	27JAN2021	BDA	MKU

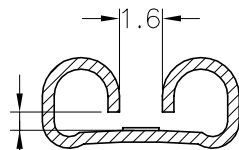
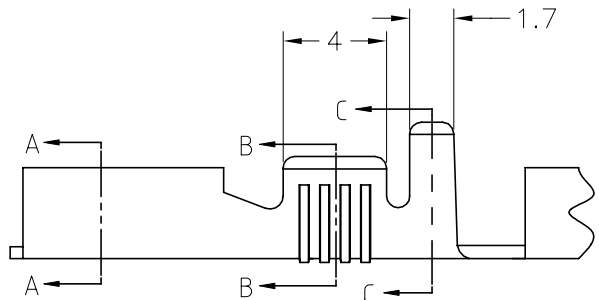


SECTION B-B

- 1 OBSOLETE PARTS: OBSOLETE CIS STREAMLINING PER D.RENAUD/D.SINISI
- 2 OBSOLETE
- 3 GENERAL TOLERANCE ±0.3



SECTION C-C



FOR TONGUE OF 0.8mm THICKNESS

SECTION A-A

SILVER	BRONZE POS.	735211-8	2
TIN	BRASS	735211-7	2
AS STAMPED	BRASS	735211-6	1
SILVER	BRASS	735211-5	2
TIN	BRONZE POS.	735211-4	2
-	BRONZE POS.	735211-3	2
TIN	BRASS	735211-2	
-	BRASS	735211-1	1
FINISH	MATERIAL	PART NUMBER	

WIRE RANGE	INSULATION RANGE
2.1-5.3mm <sup>2</sup>	ø3.8-5.1mm

THIS DRAWING IS A CONTROLLED DOCUMENT.		DWN BASAVARAJA D A 27JAN2021				
		CHK CHO, BYUNG HEE 27JAN2021				
DIMENSIONS: 单位: 耗 mm 		TOLERANCES UNLESS OTHERWISE SPECIFIED: 一般公差 0 PLC ± - 1 PLC ± - 2 PLC ± - 3 PLC ± - 4 PLC ± - ANGLES ± -		APVD FRIC WANG 27JAN2021 PRODUCT SPEC 製品規格 - APPLICATION SPEC 取付適用規格 -	NAME 名称 250 SERIES FASTON RECEPTACLE	
MATERIAL 材料 SEE TABLE	FINISH 仕上 SEE TABLE	WEIGHT 0	SIZE A3	CAGE CODE 00779	DRAWING NO 番号 G=735211	RESTRICTED TO -
CUSTOMER DRAWING			SCALE 尺度 NTS	SHEET 1 OF 1	REV E3	

单击下面可查看定价，库存，交付和生命周期等信息

[>>TE Connectivity\(泰科\)](#)