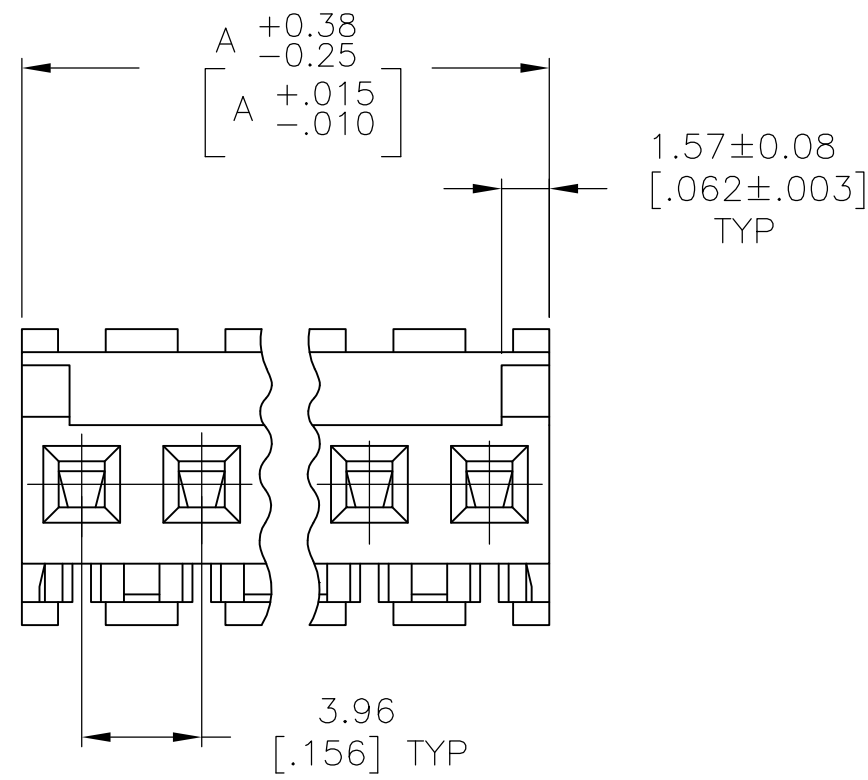
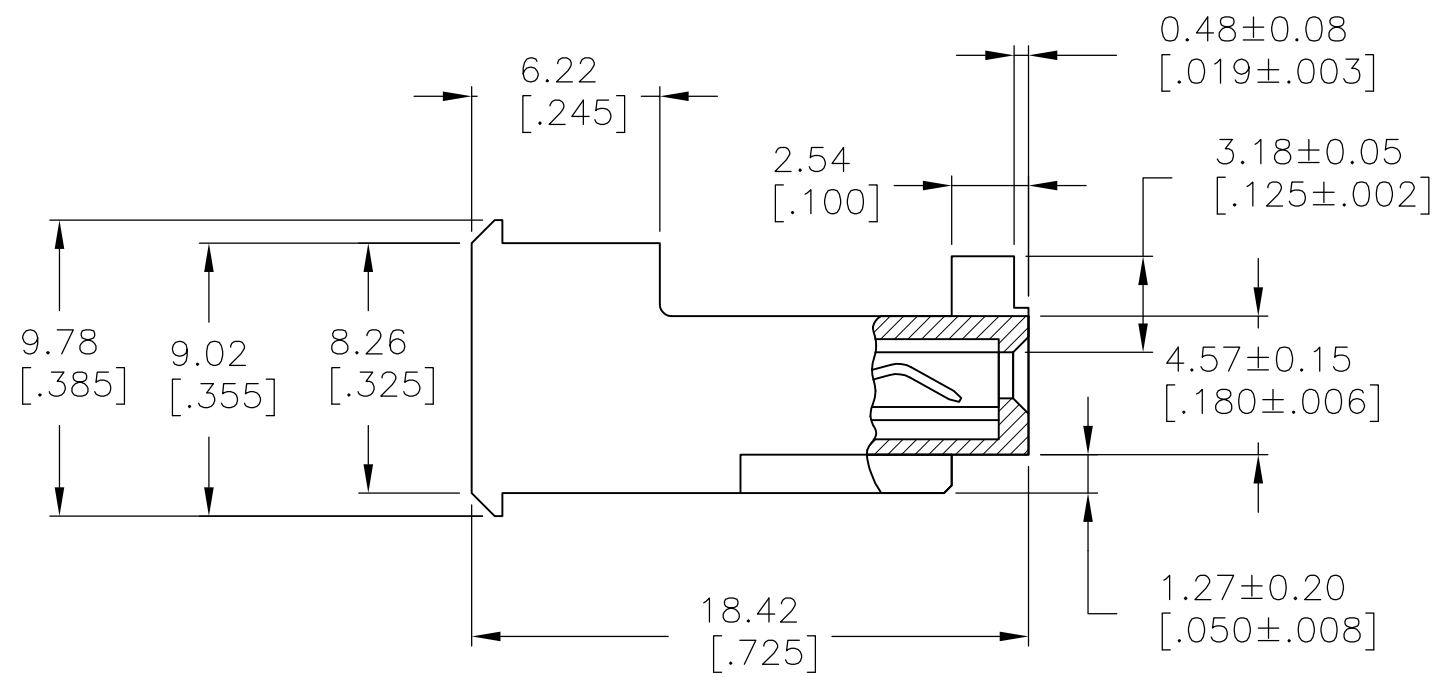
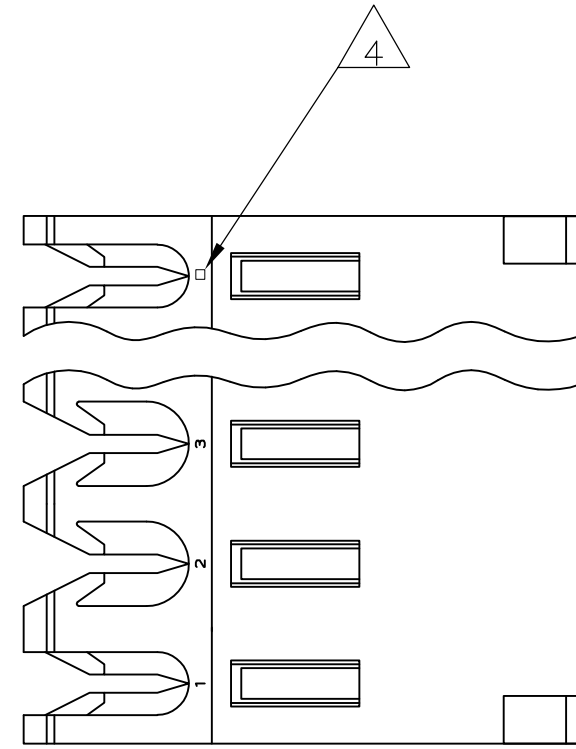


THIS DRAWING IS UNPUBLISHED. RELEASED FOR PUBLICATION
 © COPYRIGHT - By - ALL RIGHTS RESERVED.

LOC	DIST	REVISIONS					
		P	LTR	DESCRIPTION	DATE	DWN	APVD
CM	54	B2		REVISED PER ECO-11-014117	18JUL11	HMR	SM



1 MATERIAL: CONNECTOR - NYLON UL94V-0 (BLACK).
 CONTACTS - 0.30[.012] THICK COPPER ALLOY
 BRIGHT TIN-LEAD 0.00203[.000080] MIN THICK FOR CONTACTS
 644570-2 THRU 1-644570-4
 MATTE WHISKER MITIGATED TIN 0.00203[.000080] MIN THICK FOR
 3-644570-2 THRU 4-644570-4

2. CONTACTS ACCEPT 18 AWG WIRE WITH 2.41[.095] MAX INSULATION DIAMETER.
 3. CONTACTS MUST ACCEPT 1.14±0.03 [.045±.001] SQUARE POST AND REMAIN LOCKED IN POSITION.

4 IDENTIFICATION NUMBER FOR LAST CIRCUIT MAY NOT APPEAR ON ALL ASSEMBLIES.

5. DIMENSIONS IN BRACKETS ARE IN INCHES.

6. HOUSING FEATURES ARE: FEED-THRU WITHOUT LOCKING RAMP AND WITH POLARIZING TAB.

7 OBSOLETE PARTS: OBSOLETE CIS STREAMLINING PER D.RENAUD/D.SINISI

47.55 [1.872]	12	4-644570-2
43.59 [1.716]	11	4-644570-1
39.62 [1.560]	10	4-644570-0
35.66 [1.404]	9	3-644570-9
31.70 [1.248]	8	3-644570-8
27.74 [1.092]	7	3-644570-7
23.77 [.936]	6	3-644570-6
19.81 [.780]	5	3-644570-5
15.85 [.624]	4	3-644570-4
11.89 [.468]	3	3-644570-3
7.92 [.312]	2	3-644570-2
47.55 [1.872]	12	1-644570-2
43.59 [1.716]	11	1-644570-1
39.62 [1.560]	10	1-644570-0
35.66 [1.404]	9	644570-9
31.70 [1.248]	8	644570-8
27.74 [1.092]	7	644570-7
23.77 [.936]	6	644570-6
19.81 [.780]	5	644570-5
15.85 [.624]	4	644570-4
11.89 [.468]	3	644570-3
7.92 [.312]	2	644570-2
		DIM A
		NO OF CIRCUITS
		PART NO

7 SUPERSEDED

OBSOLETE

7 SUPERSEDED

7 SUPERSEDED

METRIC

THIS DRAWING IS A CONTROLLED DOCUMENT.		DWN	-	TE Connectivity	
DIMENSIONS: mm [INCHES]		CHK	-	MTA-156 CONNECTOR ASSEMBLY, 18 AWG, UL94V-0, SPECIAL	
TOLERANCES UNLESS OTHERWISE SPECIFIED:		APVD	-	NAME	
0 PLC	± -	PRODUCT SPEC		108-1051	
1 PLC	± -	APPLICATION SPEC		114-1020	
2 PLC	± -	WEIGHT		-	
3 PLC	± 0.13 [.005]	CUSTOMER DRAWING		SCALE 4:1 SHEET 1 OF 1 REV B2	
4 PLC	± -	MATERIAL		A2 00779 C-644570	
ANGLES	± -	FINISH		-	

单击下面可查看定价，库存，交付和生命周期等信息

[>>TE Connectivity\(泰科\)](#)