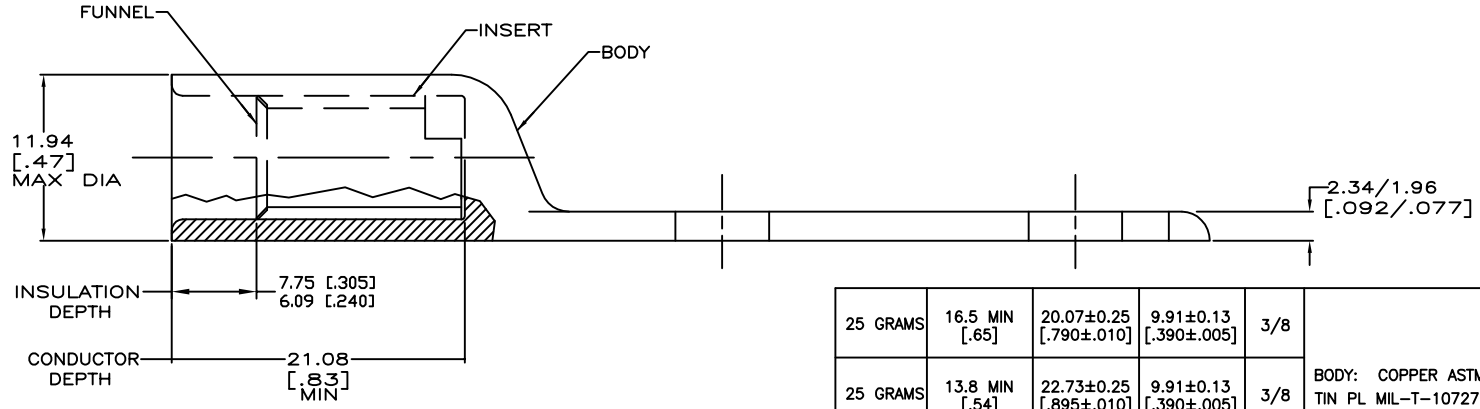
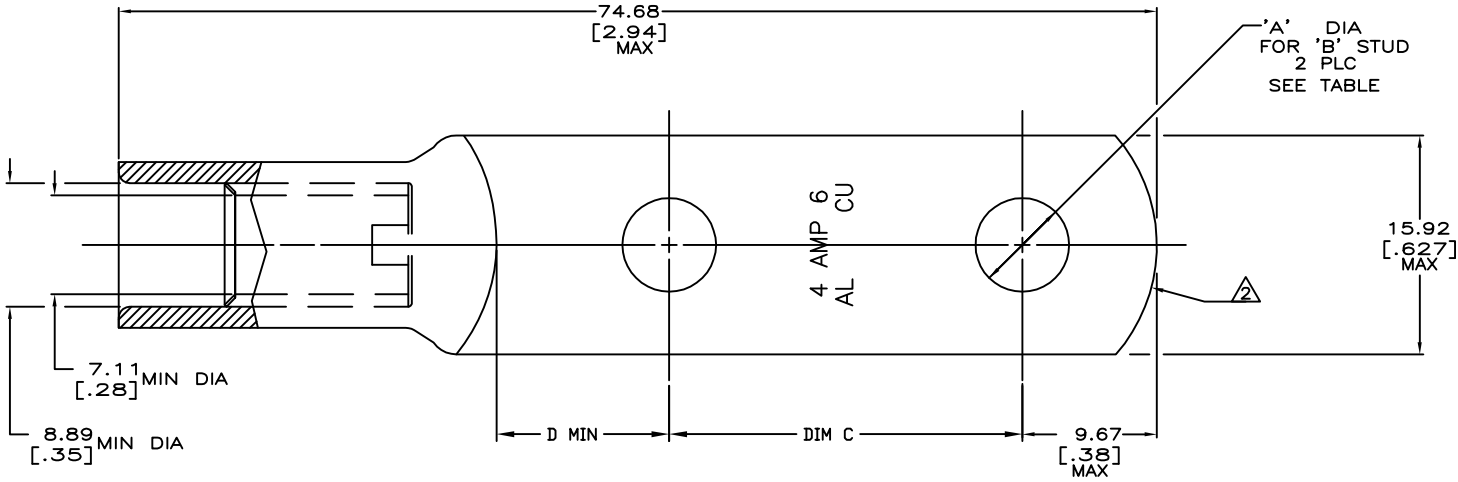


THIS DRAWING IS UNPUBLISHED. RELEASED FOR PUBLICATION. ALL RIGHTS RESERVED.

REVISIONS					
#	LR	DESCRIPTION	DATE	DR	APPD
1	L	REV PER ECO 18-000671	2-16-18	CT	PD



1 WIRE INSULATION: 7.01 [.276] - 7.75 [.305] DIA
 2 THE TONGUE RADIUS FEATURE IS NOT A TOOLING CONTROLLED DIMENSION AND MAY NOT BE A TRUE RADIUS.

25 GRAMS	16.5 MIN [.65]	20.07±0.25 [.790±.010]	9.91±0.13 [.390±.005]	3/8	BODY: COPPER ASTM-B187 ANNEALED TIN PL MIL-T-10727 0.00457[.000150] MIN THK INSERT & FUNNEL: BRASS PER ASTM B36 NICKEL PLATE SAE AMS QQ-N-290A, DATED JULY 2000, 0.00254 [.000100] MIN THK	55833-4
25 GRAMS	13.8 MIN [.54]	22.73±0.25 [.895±.010]	9.91±0.13 [.390±.005]	3/8		55833-3
25 GRAMS	11.18 MIN [.440]	25.40±0.25 [1.000±.010]	9.91±0.13 [.390±.005]	3/8		55833-2
26 GRAMS	11.18 MIN [.440]	25.40±0.25 [1.000±.010]	6.73±0.08 [.265±.003]	1/4		55833-1
WEIGHT	"D"	"C"	"A"	"B"	MATERIAL AND FINISH	PART NO.

THIS DRAWING IS A CONTROLLED DOCUMENT.

DRW: DK SCHRUM 6/15/92	CHK: WJ VOCKROTH 6/16/92	APPD: AJ KAUFMAN 6/16/92	NAME: AJ KAUFMAN
DIMENSIONS: INCHES		TOLERANCES UNLESS OTHERWISE SPECIFIED:	
0 PLC ± - 1 PLC ± - 2 PLC ± - 3 PLC ± - 4 PLC ± - ANGLES ± -		PRODUCT SPEC: 108-11011 APPLICATION SPEC: 114-2134	
MATERIAL: SEE TABLE	FINISH: SEE TABLE	WEIGHT: 0.000000	SIZE: A2
CUSTOMER DRAWING		WIRE TERMINAL, COPALUM SEALED, RING TONGUE, WIRE SIZE: 4 AL, 6 COPPER	RESTRICTED TO: -

TE Connectivity
 SCALE: 4:1 SHEET: 1 of 1 REV: L

单击下面可查看定价，库存，交付和生命周期等信息

[>>TE Connectivity\(泰科\)](#)