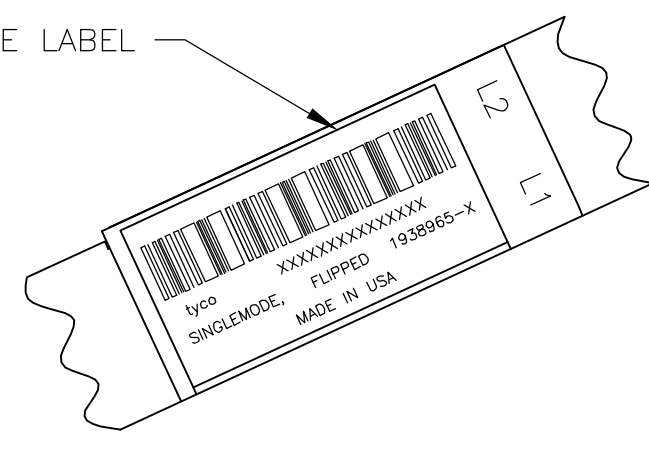
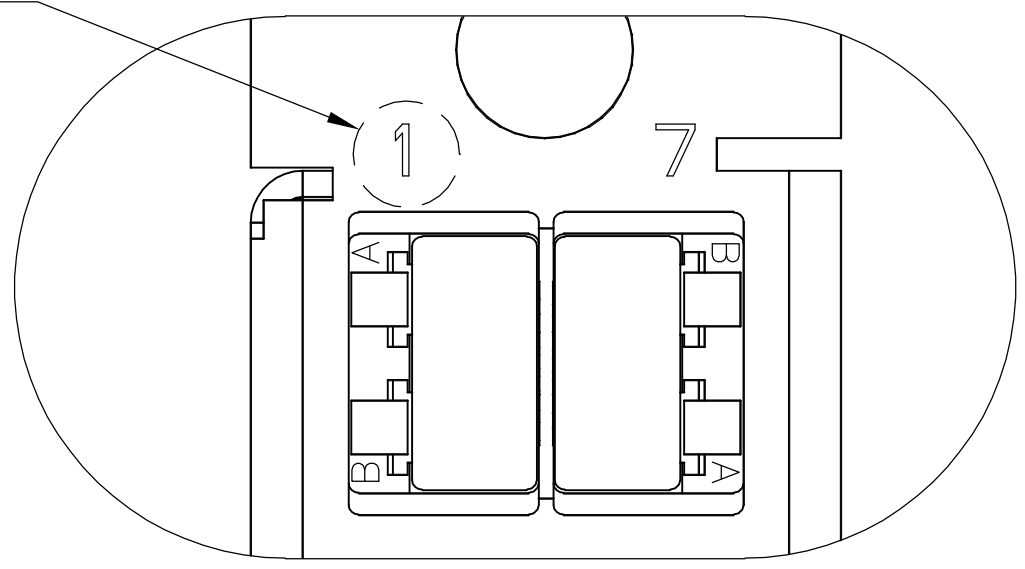
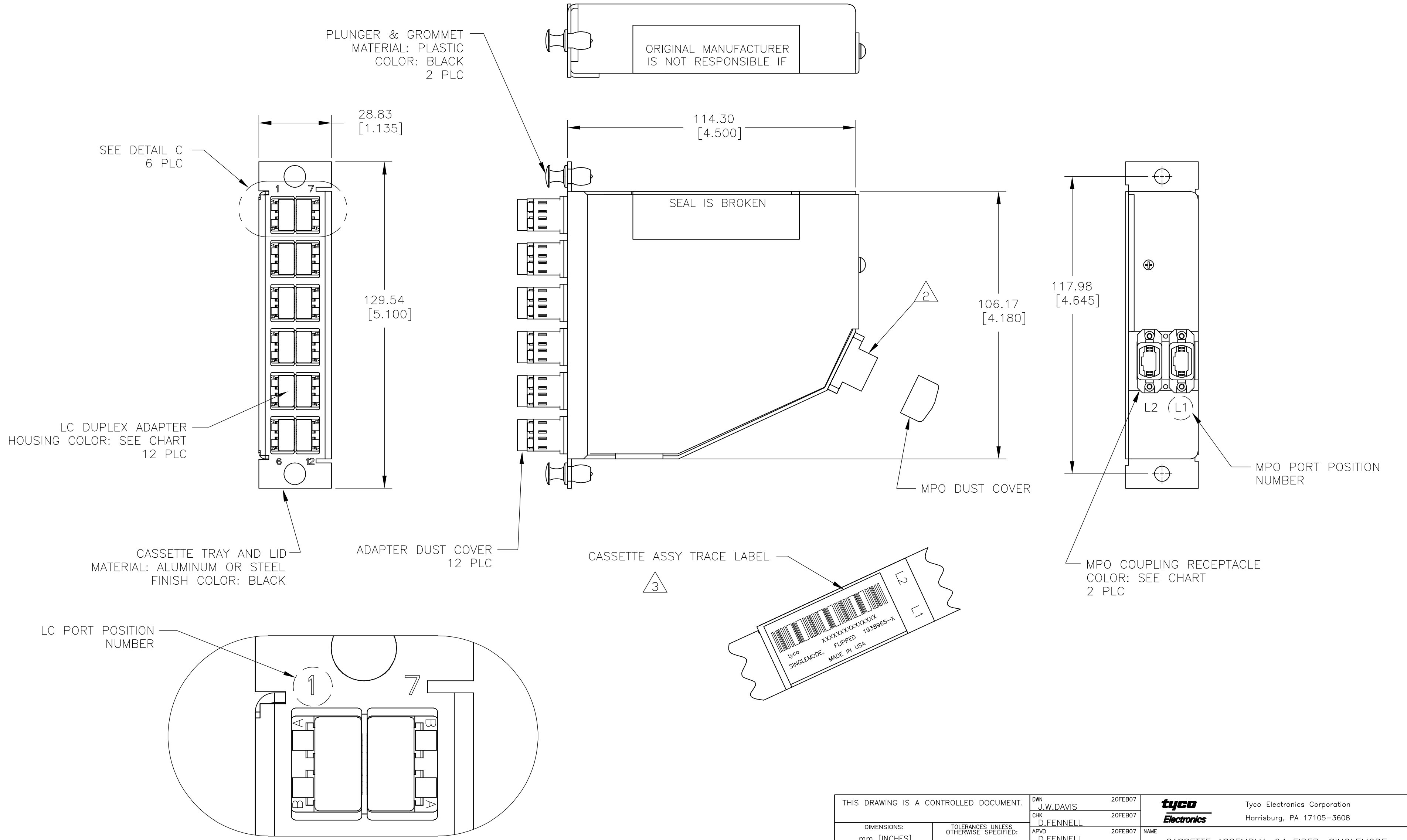


LOC	DIST	REVISIONS					
CE	16	P	LTR	DESCRIPTION	DATE	DWN	APVD
		A		RELEASED	20FEB07	JWD	DLF

D  
C  
B  
A

D  
C  
B  
A

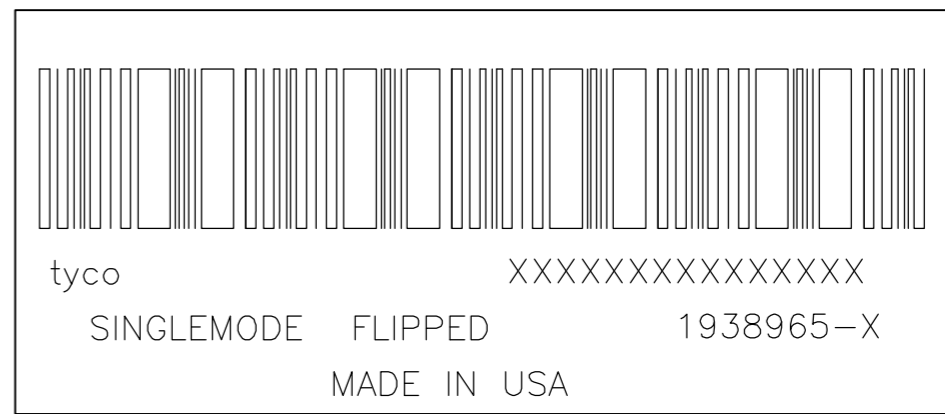


THIS DRAWING IS A CONTROLLED DOCUMENT.		DWN J.W.DAVIS 20FEB07	 Tyco Electronics Corporation Harrisburg, PA 17105-3608																					
DIMENSIONS: mm [INCHES]		CHK D.FENNELL 20FEB07																						
TOLERANCES UNLESS OTHERWISE SPECIFIED:		APVD D.FENNELL 20FEB07	NAME CASSSETTE ASSEMBLY, 24 FIBER, SINGLEMODE MPO - LC PAIRS FLIPPED																					
<table border="1"> <tr><td>0 PLC</td><td>±</td><td>-</td></tr> <tr><td>1 PLC</td><td>±</td><td>-</td></tr> <tr><td>2 PLC</td><td>±</td><td>-</td></tr> <tr><td>3 PLC</td><td>±</td><td>-</td></tr> <tr><td>4 PLC</td><td>±</td><td>-</td></tr> <tr><td>ANGLES</td><td>±</td><td>-</td></tr> <tr><td>FINISH</td><td>-</td><td>-</td></tr> </table>		0 PLC	±	-	1 PLC	±	-	2 PLC	±	-	3 PLC	±	-	4 PLC	±	-	ANGLES	±	-	FINISH	-	-	PRODUCT SPEC - APPLICATION SPEC -	SIZE A2
0 PLC	±	-																						
1 PLC	±	-																						
2 PLC	±	-																						
3 PLC	±	-																						
4 PLC	±	-																						
ANGLES	±	-																						
FINISH	-	-																						
MATERIAL -		WEIGHT -	CAGE CODE 00779																					
		CUSTOMER DRAWING	DRAWING NO 1938965																					
		SCALE NTS	SHEET 1 of 2																					
		REV A	RESTRICTED TO -																					

THIS DRAWING IS UNPUBLISHED. RELEASED FOR PUBLICATION  
 © COPYRIGHT BY TYCO ELECTRONICS CORPORATION. ALL RIGHTS RESERVED.

LOC	DIST	REVISIONS			
P	LTR	DESCRIPTION	DATE	DWN	APVD
CE	16	SEE SHEET 1	-	-	-

1. MAXIMUM CASSETTE ASSEMBLY LOSS: 1.25dB.
2. WHITE MARKING ON MPO TO BE FACING TOWARD TOP OF CONNECTOR MODULE. WHITE MARK INDICATES FIBER 1 SIDE
3. SEE TRACE LABEL DETAIL
4. A COPY OF CASSETTE ASSEMBLY LOSS TEST DATA WILL BE PLACED INSIDE OR WITH THE UNIT PACKAGE. CASSETTES WILL BE TESTED AT 1310nm & 1550nm WAVELENGTHS.
5. PRODUCT AND PROCESSING MUST MEET REQUIREMENTS OF TYCO ELECTRONICS STANDARD 230-702



FIBER PATH - PAIRS FLIPPED

MPO L1 PORT POSITION NO	MPO L2 PORT POSITION NO	LC PORT POSITION NO
1	-	1A
2	-	1B
3	-	2A
4	-	2B
5	-	3A
6	-	3B
7	-	4A
8	-	4B
9	-	5A
10	-	5B
11	-	6A
12	-	6B
-	1	7A
-	2	7B
-	3	8A
-	4	8B
-	5	9A
-	6	9B
-	7	10A
-	8	10B
-	9	11A
-	10	11B
-	11	12A
-	12	12B

AQUA SECURE	AQUA SECURE	1-1938965-1
SLATE SECURE	SLATE SECURE	1-1938965-0
ROSE SECURE	ROSE SECURE	1938965-9
VIOLET SECURE	VIOLET SECURE	1938965-8
BROWN SECURE	BROWN SECURE	1938965-7
ORANGE SECURE	ORANGE SECURE	1938965-6
YELLOW SECURE	YELLOW SECURE	1938965-5
BLUE SECURE	BLUE SECURE	1938965-4
GREEN SECURE	GREEN SECURE	1938965-3
RED SECURE	RED SECURE	1938965-2
MPO COUPLING BUSHING COLOR & TYPE	LC ADAPTER COLOR & TYPE	PART NUMBER

THIS DRAWING IS A CONTROLLED DOCUMENT.		DWN J.W.DAVIS 20FEB07	Tyco Electronics Corporation Harrisburg, PA 17105-3608	
DIMENSIONS: mm [INCHES]		CHK D.FENNELL 20FEB07		
TOLERANCES UNLESS OTHERWISE SPECIFIED:		APVD D.FENNELL 20FEB07	NAME CASSETTE ASSEMBLY, 24 FIBER, SINGLEMODE MPO - LC PAIRS FLIPPED	
0 PLC ± - 1 PLC ± - 2 PLC ± - 3 PLC ± - 4 PLC ± - ANGLES ± - FINISH -		PRODUCT SPEC -	RESTRICTED TO -	
MATERIAL -		APPLICATION SPEC -	SIZE A2	CAGE CODE 00779
		WEIGHT -	DRAWING NO C=1938965	
		CUSTOMER DRAWING		SCALE NTS SHEET 2 of 2 REV A

单击下面可查看定价，库存，交付和生命周期等信息

[>>TE Connectivity\(泰科\)](#)