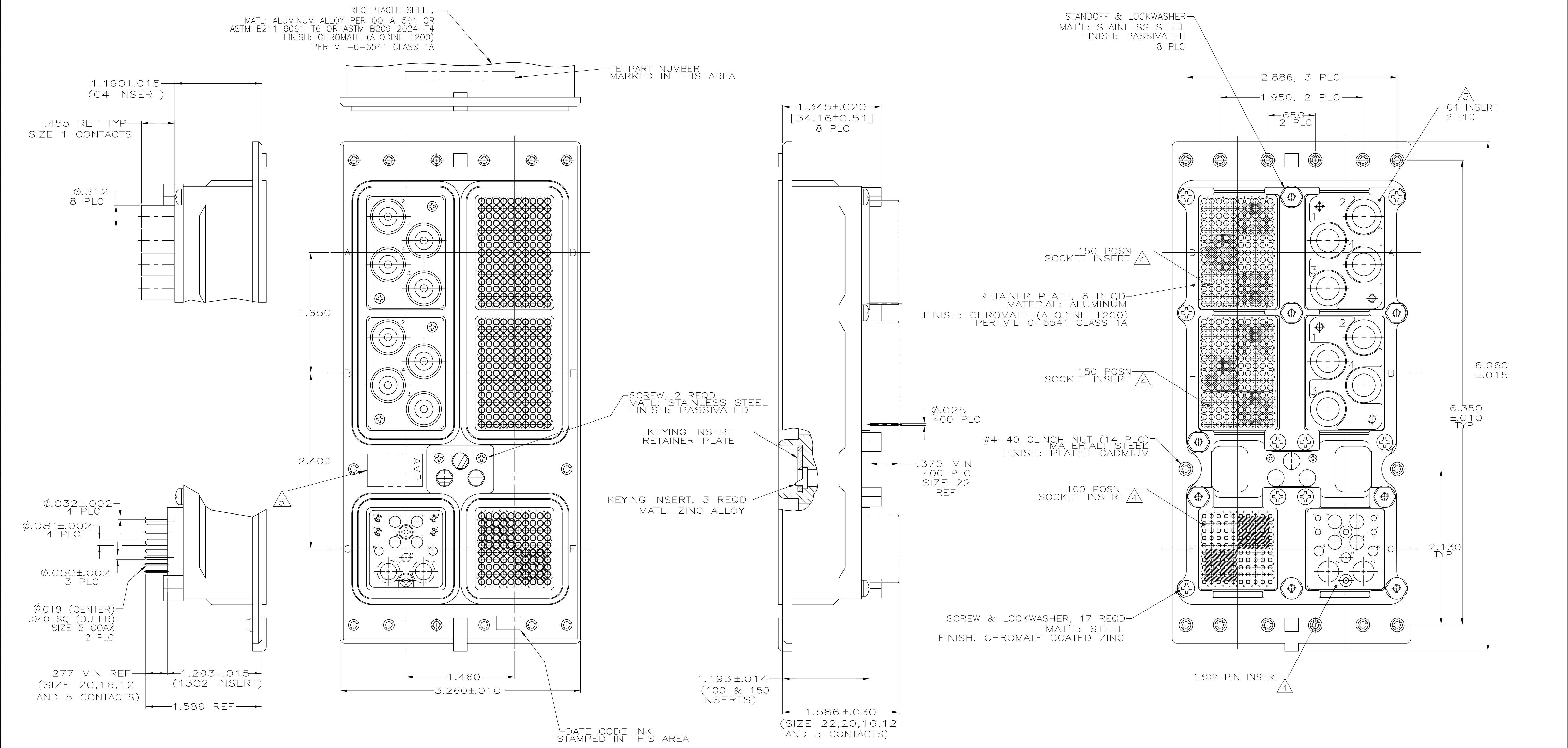


REVISIONS				
P	LTR	DESCRIPTION	DATE	APPV
B	REV PER ECO	17-007041	5-16-17	CT EO



- FOLLOWING CONTACTS ARE INCLUDED AND LOADED:
 SIZE 22: AMP P/N 211431-6; QTY=400
 SIZE 20: AMP P/N 446546-3; QTY=4
 SIZE 16: AMP P/N 446547-3; QTY=3
 SIZE 12: AMP P/N 446548-3; QTY=4
 SIZE 5 COAX: 447335-2; QTY=2
 SIZE 1 COAX WITH OSP ADAPTER: 1218713-1; QTY=8
- POLARIZING KEYS ARE INSTALLED IN POSITION 40.
- INSERT MATERIAL: DIE CAST ALUMINUM PER ASTM-B-85.
 INSERT FINISH: CHROMATE PER MIL-C-5541
- INSERT MATERIAL: GLASS EPOXY OR POLYPHENYLENE SULFIDE
 PER MIL-M-24519.
- TE LOGO APPEARS IN THIS APPROXIMATE LOCATION ON
 MACHINED FROM BILLET SHELLS.
- ASSEMBLY SHOWN WITH DIE CAST SHELL. ASSEMBLIES WITH
 MACHINED SHELLS MAY VARY SLIGHTLY IN APPEARANCE.

1757225-1
 PART
 NUMBER

THIS DRAWING IS A CONTROLLED DOCUMENT.		DIN C.C.THOMAS 7-9-04	TE Connectivity																			
DIMENSIONS: INCHES		CHK K.HOGAN 7-9-04	NAME S.GLATFELTER 7-9-04																			
TOLERANCES UNLESS OTHERWISE SPECIFIED:		PRODUCT SPEC																				
<table border="1"> <tr><td>0 PLC</td><td>±</td><td>-</td></tr> <tr><td>1 PLC</td><td>±</td><td>-</td></tr> <tr><td>2 PLC</td><td>±</td><td>-</td></tr> <tr><td>3 PLC</td><td>±</td><td>-</td></tr> <tr><td>4 PLC</td><td>±</td><td>-</td></tr> <tr><td>ANGLES</td><td>±</td><td>-</td></tr> </table>		0 PLC	±	-	1 PLC	±	-	2 PLC	±	-	3 PLC	±	-	4 PLC	±	-	ANGLES	±	-	APPLICATION SPEC		
0 PLC	±	-																				
1 PLC	±	-																				
2 PLC	±	-																				
3 PLC	±	-																				
4 PLC	±	-																				
ANGLES	±	-																				
MATERIAL SEE CALLOUTS		FINISH SEE CALLOUTS	WEIGHT 0.000000	RESTRICTED TO A1 00779 C=1757225																		
CUSTOMER DRAWING		SCALE 1:1	SHEET 1 of 1	REV B																		

单击下面可查看定价，库存，交付和生命周期等信息

[>>TE Connectivity\(泰科\)](#)