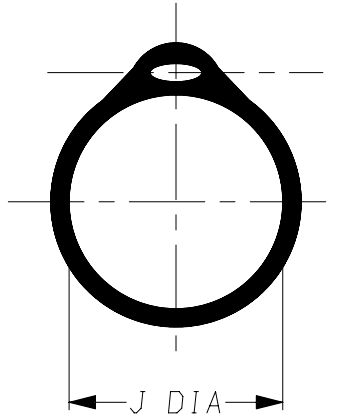
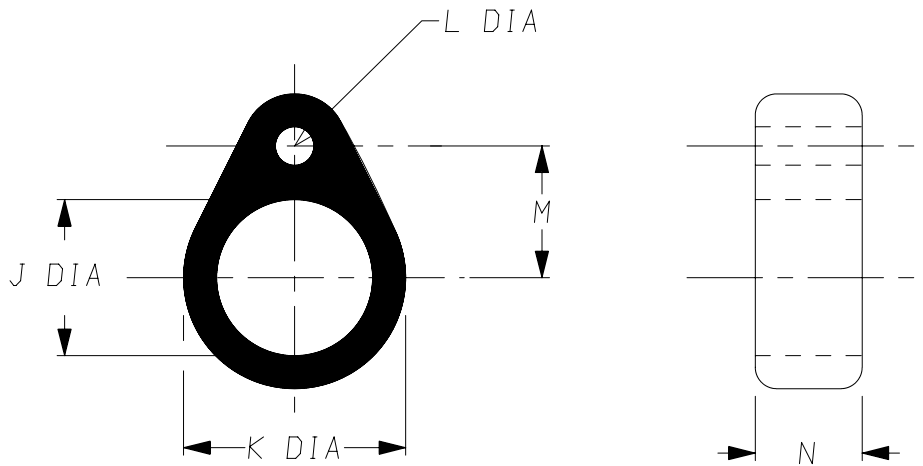


a) Part as supplied.

200W5**



b) Part after unrestricted recovery.



DIMENSIONS in millimetres
(in inches, for reference)

Part No.	J		K ±10% b	L ±10% b	M ±10% b	N ±10% b
	Min a	Max b				
200W511	7 (0.28)	5.0 (0.20)	10.8 (0.43)	3.5 (0.14)	7.15 (0.28)	10 (0.39)
200W521	11 (0.43)	7.0 (0.28)	12.6 (0.50)	3.5 (0.14)	8.05 (0.32)	10 (0.39)
200W531	15 (0.59)	11.0 (0.43)	16.5 (0.65)	3.5 (0.14)	10.00 (0.39)	10 (0.39)
200W542	20 (0.79)	15.0 (0.59)	20.2 (0.80)	3.5 (0.14)	11.85 (0.47)	10 (0.39)
200W552	25 (0.98)	20.0 (0.79)	25.0 (0.98)	3.5 (0.14)	14.25 (0.56)	10 (0.39)
200W562	32 (1.26)	20.0 (0.79)	27.0 (1.06)	4.0 (0.16)	16.00 (0.63)	10 (0.39)
200W572	38 (1.50)	29.0 (1.14)	37.0 (1.46)	4.0 (0.16)	20.50 (0.81)	10 (0.39)
200W582	46 (1.81)	36.0 (1.42)	48.0 (1.89)	4.0 (0.16)	26.00 (1.02)	10 (0.39)
200W592	50 (1.97)	45.0 (1.77)	57.0 (2.24)	4.0 (0.16)	31.50 (1.24)	10 (0.39)

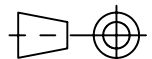
Copyright (!)

The copyright in this drawing is the property of Tyco Electronics UK Ltd. The drawing is issued on the condition that it is not copied, reproduced or disclosed to a third party, either in whole or in part without the prior written consent of Tyco Electronics UK Ltd.

Drawn A.LILLEY. Checked Issue 5 Date April 2007

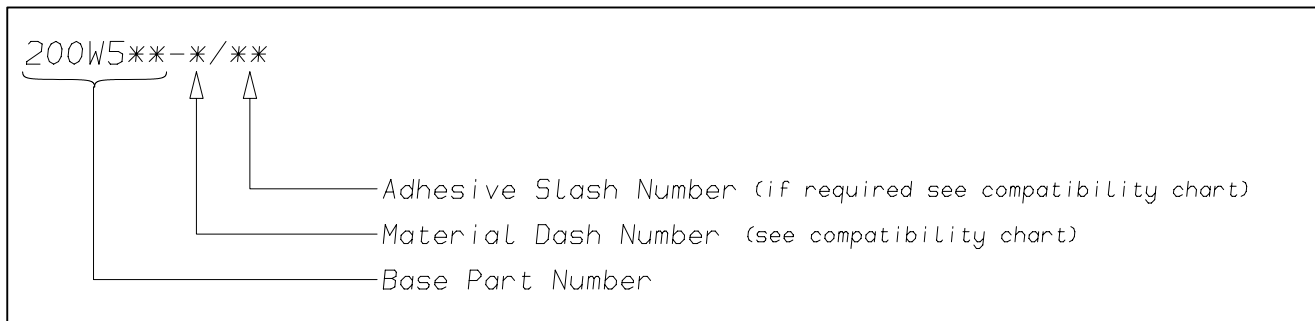
Conforms to ISO Recommendations
3rd Angle Projection
Not to Scale

Approval Design MKTG. Q.A.



Raychem		Specification Control Drawing	Part Number 200W5**	Issue 5
Iss.	Date	E.C.R. No.	Details of Change	
B	February 1980	****	Part number sadded	
C	February 1980	****	200W511 added	
D	April 1980	****	N dim was 8.0	
2	June 1982	3063	±10% tolerance added to K,L,M,N	
5	April 2007	CR07-HM-007	562,572 and 582,592 were on seperate drawings	

(Ordering Information)



(COMPATIBILITY CHART)

Material Dash Number	Material Description	SPEC Number	Coating Slash Number
-3	POLYOLEFIN, SEMI-RIGID	RT-301, RK-6703	/42, /86, /180
-4	POLYOLEFIN, FLEXIBLE	RT-1304, RK-6704	/42, /86
-25	ELASTOMER, FLUID RESISTANT	RT-1325, RK-6713	/42, /86, /225
-130	POLYOLEFIN, COMMERCIAL FLEXIBLE	RW-2008	/42

NOTES

- ① As supplied dimensions are for uncoated parts, when coating is added entry diameters will reduce by 1.5mm Max.
- ② High Strength Eyelet Rings
Pull capability of 500n, can be used on cables or connectors.

Tyco Electronics UK Ltd. Faraday Road, Swindon, Wiltshire, SN3 5HH England Telephone: (01793) 528171 Fax: 572516	Tyco Electronics Corporation 300, Constitution Drive, Menlo Park, CA 94025 USA Telephone (650) 361-3860 Fax: (650) 361-5579
Cage Code K1010	Cage Code 06090

单击下面可查看定价，库存，交付和生命周期等信息

[>>TE Connectivity\(泰科\)](#)