

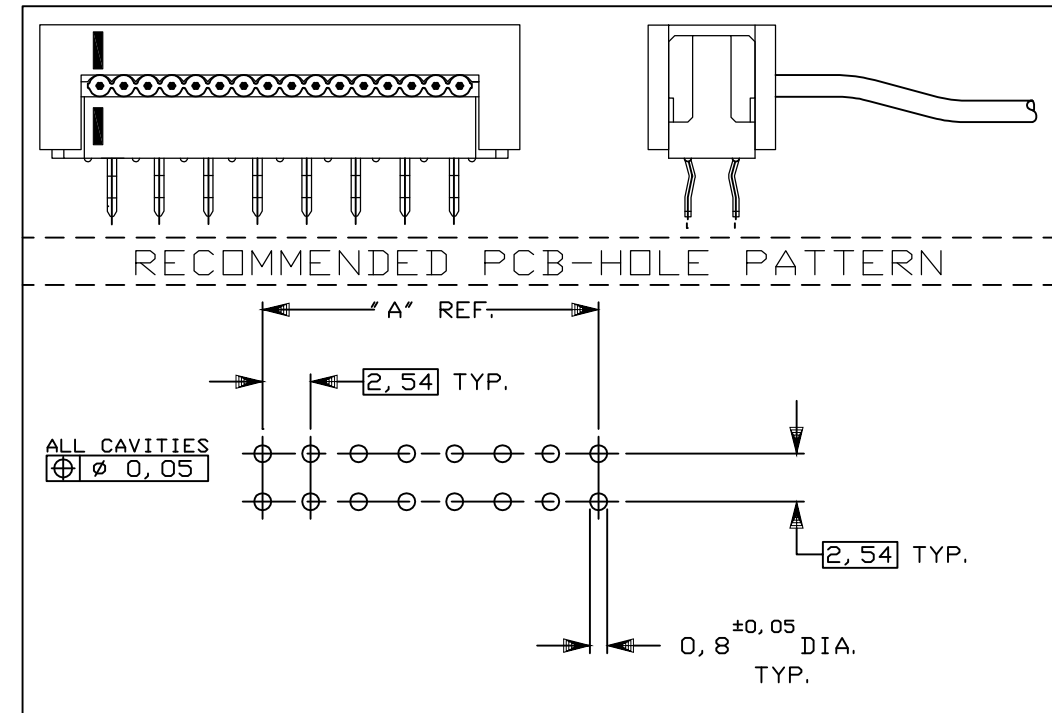
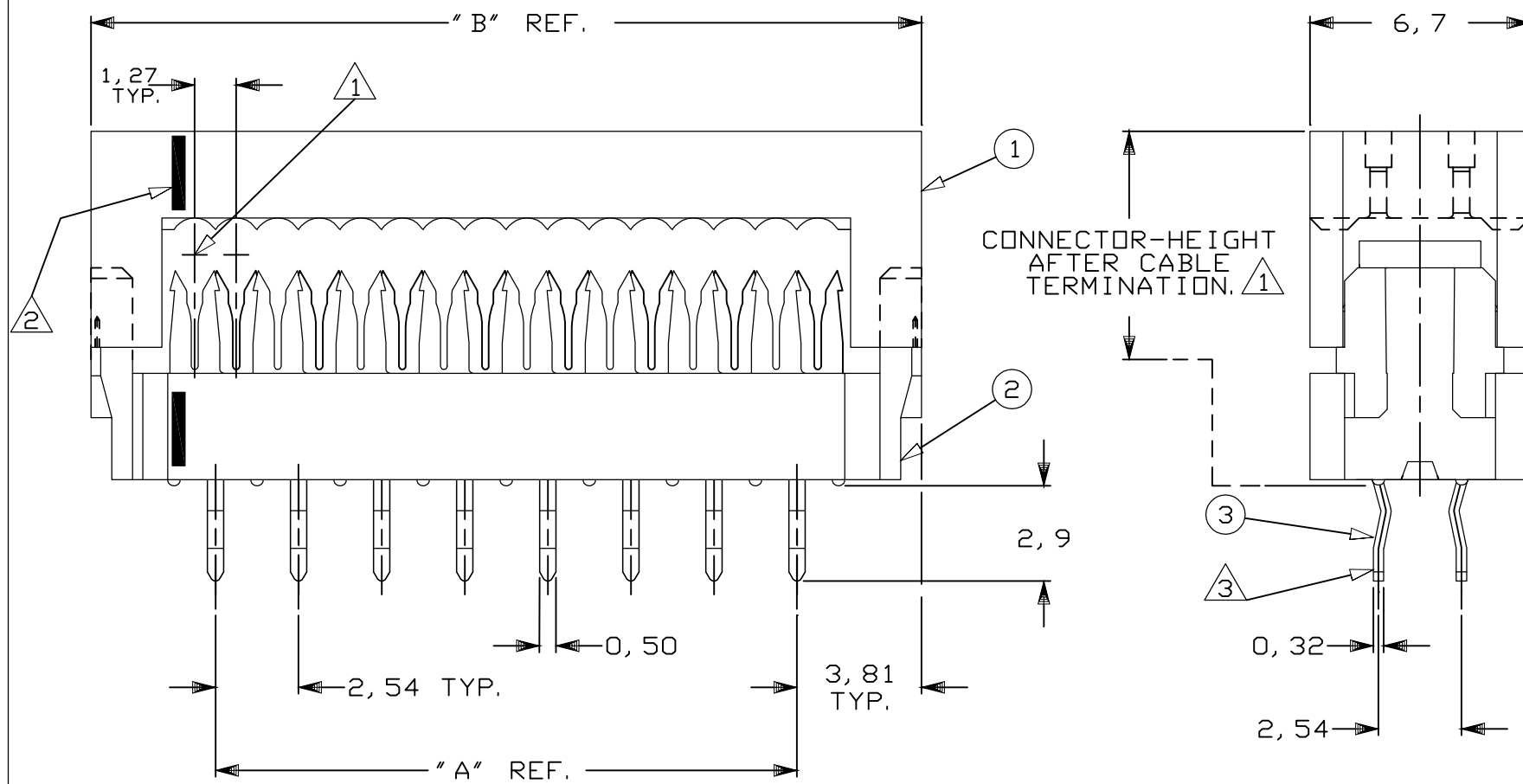
DO NOT SCALE
DIMENSIONS IN mm

METRIC



NOTES:

- ① CONNECTOR IS DESIGNED FOR FLAT RIBBON CABLE ON 1,27 CENTERS. FOR CABLE REQUIREMENTS SEE APPLICATION SPECIFICATION 114-19022.
- ② INDICATION OF FIRST CABLE POSITION REFERRING TO CORRESPONDING CONTACT POSITION (BLACK INK MARKS)
- ③ SOLDER-TINES FOR 0,8^{±0,05} DIA. HOLES.
- 4) PRODUCT SPECIFICATION 108-19033



DIM. "B" REF.	DIM. "A" REF.	NR. OF POS.	PARTNUMBER	PART REV.
86,36	78,74	64	6-216791-4	B
81,28	73,66	60	6-216791-0	B
68,58	60,96	50	5-216791-0	B
60,96	53,34	44	4-216791-4	B
55,88	48,26	40	4-216791-0	B
48,26	40,64	34	3-216791-4	B
38,10	30,48	26	2-216791-6	B
30,48	22,86	20	2-216791-0	B
25,40	17,78	16	1-216791-6	B
22,86	15,24	14	1-216791-4	B
17,78	10,16	10	1-216791-0	B
12,70	5,08	6	216791-6	B

③ CONTACTS	PHOSPHORBRONZE	3,0-5,1 μm TIN WITH ENTIRE NICKEL UNDERCOATING
② HOUSING AND COVER	THERMOPLASTIC POLYESTER	GREY
① HOUSING		
COMPONENT NAME	MATERIAL	PLATING / COLOUR
CUSTOMER DRAWING FOR REFERENCE ONLY WILL NOT BE UPDATED		
C COPYRIGHT 19- BY TE HOLLAND B.V. ALL INTERNATIONAL RIGHTS RESERVED. TE PRODUCTS MAY BE COVERED BY U. S. AND FOREIGN AND/OR PATENTS PENDING. THIS DRAWING IS UNPUBLISHED RELEASED FOR PUBLICATION , 19		
TE		TE Connectivity
NAME AMP-LATCH 2.54 DIL-PLUG CONNECTOR WITH RETENTION FEATURE.		
DRG. No.	REV. LTR.	SHEET
C-216791	B3	1 OF 1

DR.	CHK.	APP.	DATE
R. HOGEVEEN	R. VERSTIJNEN	L. V. SOEST	06-11-89
			09-11-89
			09-11-89

单击下面可查看定价，库存，交付和生命周期等信息

[>>TE Connectivity\(泰科\)](#)