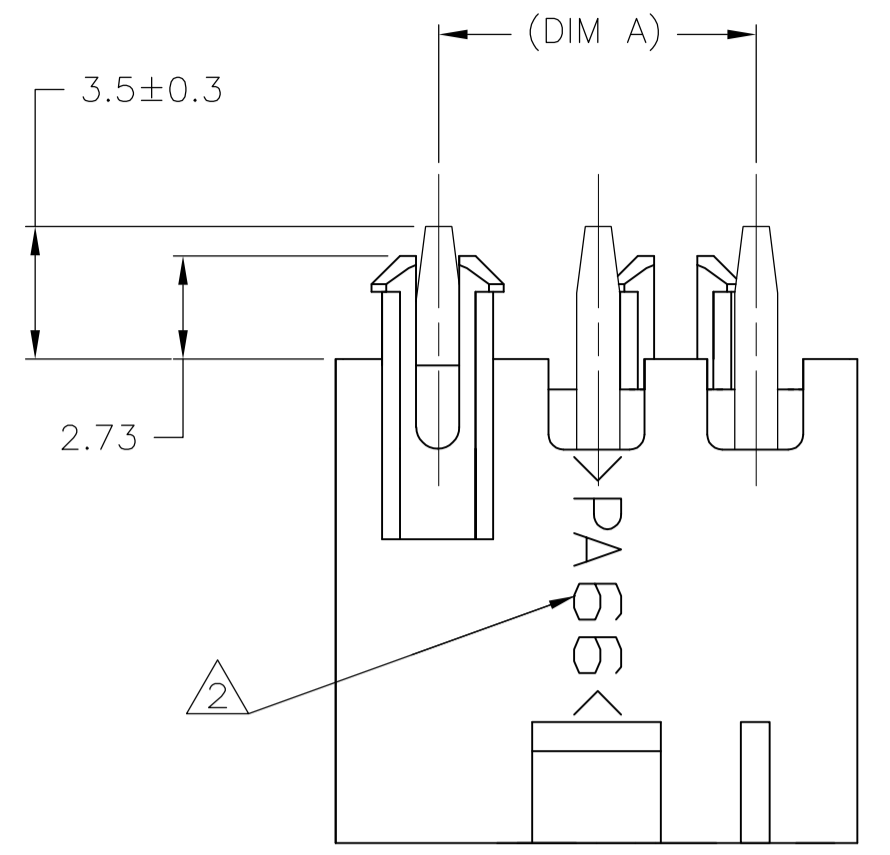
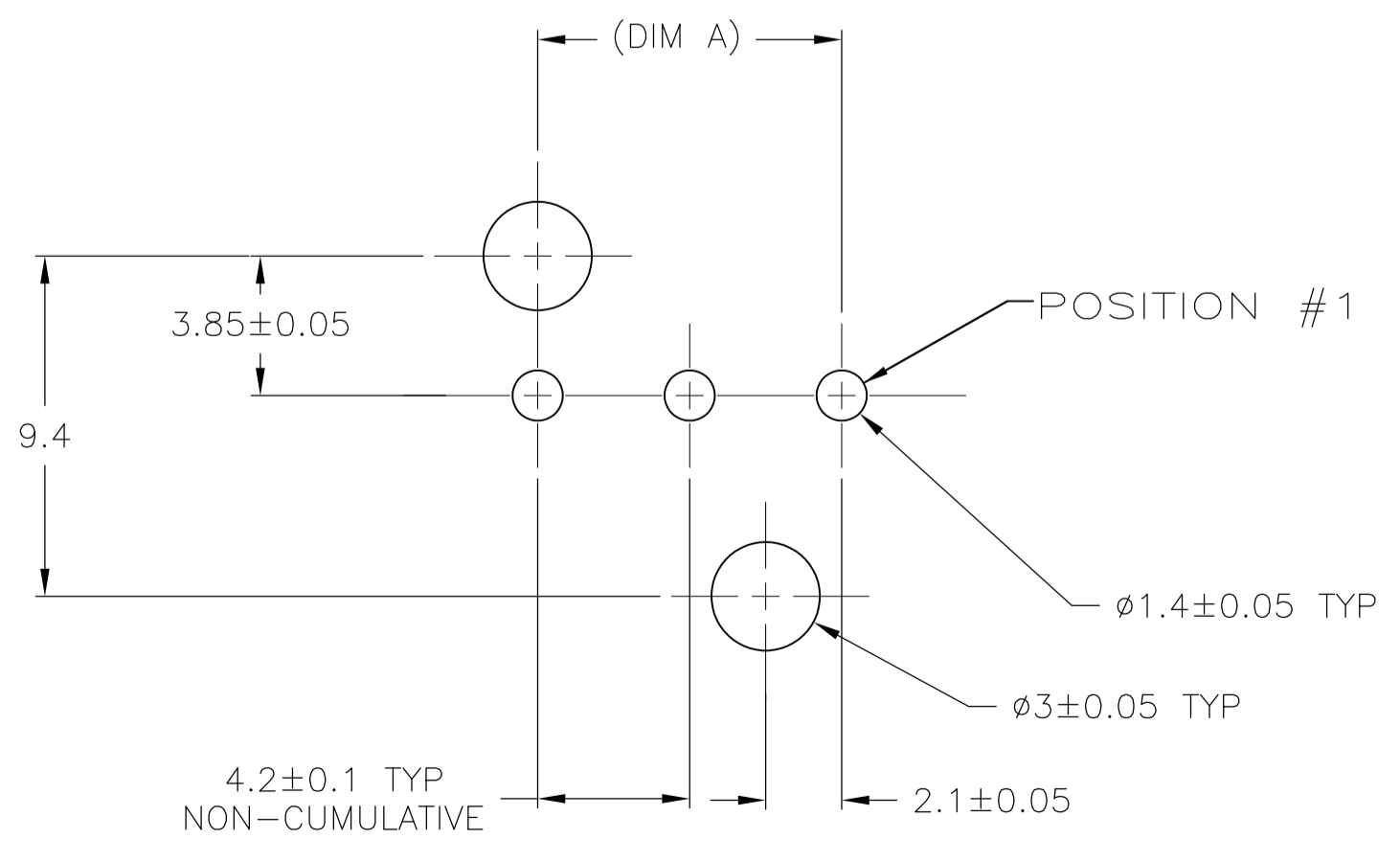
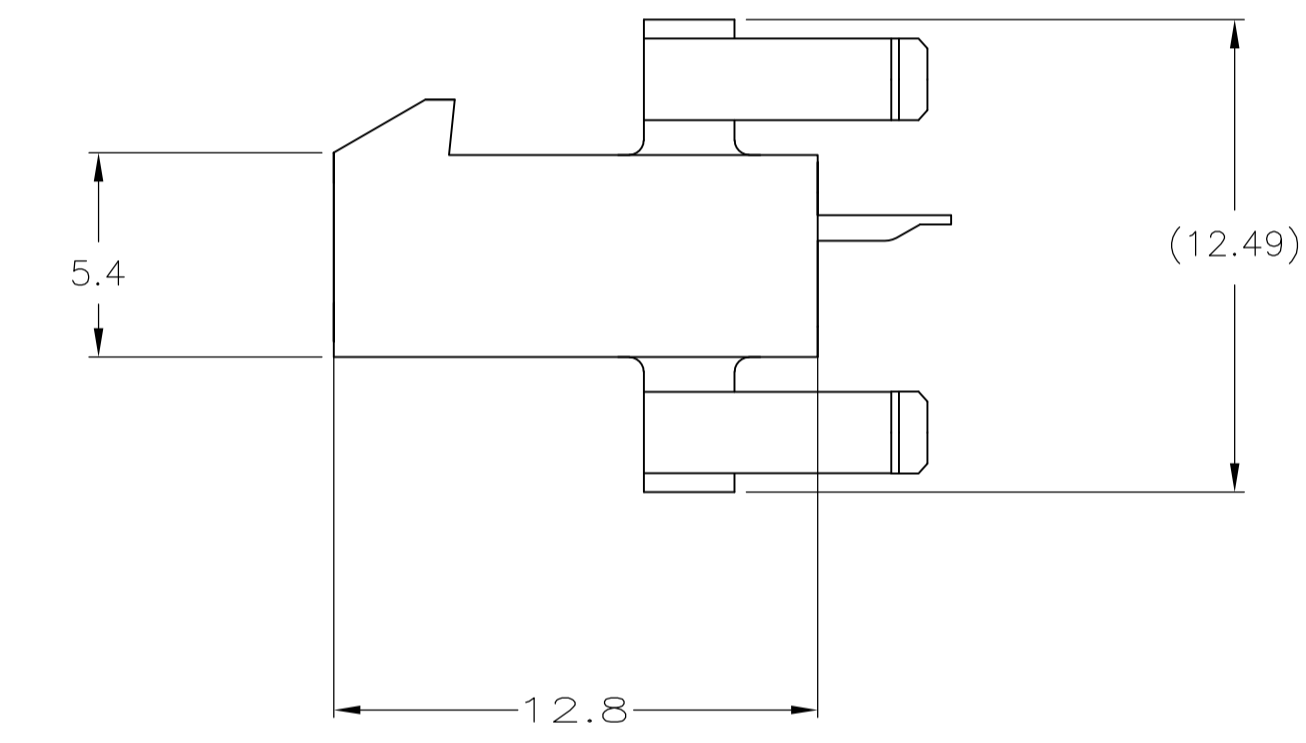
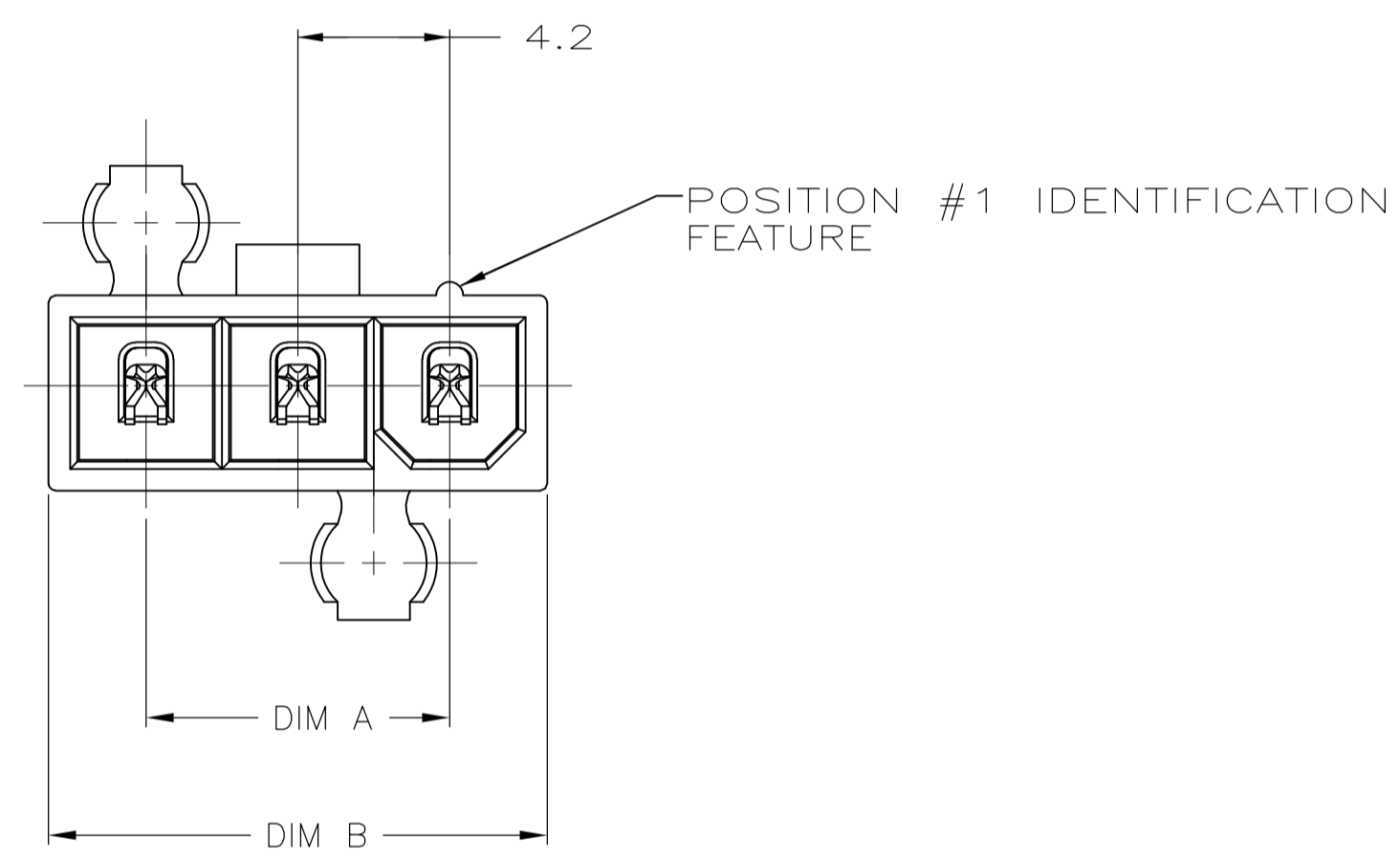


LOC		DIST		REVISIONS			
P	LTR	DESCRIPTION	DATE	DMN	APVD		
A		WR-08-45	23SEP2008	KW	CC		
B		REVISED ECR-14-015945	28OCT2014	A.Z	D.Z		

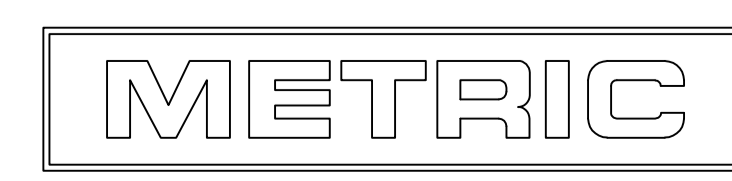


- ⚠ MATERIAL: HOUSING - NYLON 66 GF20, UL94V-0, NATURAL.  
CONTACTS - BRASS, TIN PLATED.
- ⚠ TYCO ELECTRONICS LOGO AND MATERIAL ID MAY BE LOCATED ON EITHER LONG SIDE OF PART.
- 3. GLOW WIRE APPROVED, CONTACT TYCO ELECTRONICS ENGINEERING FOR SPECIFICATION.



22.2	16.8	5	2029181-5
18	12.6	4	2029181-4
13.8	8.4	3	2029181-3
DIM B	DIM A	NO. OF POSITIONS	PART NO

RECOMMENDED MOUNTING HOLE PATTERN FOR 1.78 MAX THICK P.C. BOARD COMPONENT SIDE SHOWN



THIS DRAWING IS A CONTROLLED DOCUMENT.

DIMENSIONS: mm	TOLERANCES UNLESS OTHERWISE SPECIFIED:	DIN K. WHITAKER 23SEP2008	APVD C. CASH 23SEP2008	NAME
0. PLC ± -	1. PLC ± 0.2	CHK C. CASH 23SEP2008	PRODUCT SPEC	PLUG ASSEMBLY, VERTICAL, SINGLE ROW, W/O DRAIN HOLES, VAL-U-LOK(TM)
2. PLC ± 0.13	3. PLC ± -	APVD C. CASH 23SEP2008	APPLICATION SPEC	108-2112
4. PLC ± -	ANGLES ± 0°30'	SIZE	114-13172	100779
MATERIAL	FINISH	WEIGHT	2029181	RESTRICTED TO
			CUSTOMER DRAWING	SCALE N/A SHEET 1 OF 1 REV B

单击下面可查看定价，库存，交付和生命周期等信息

[>>TE Connectivity\(泰科\)](#)