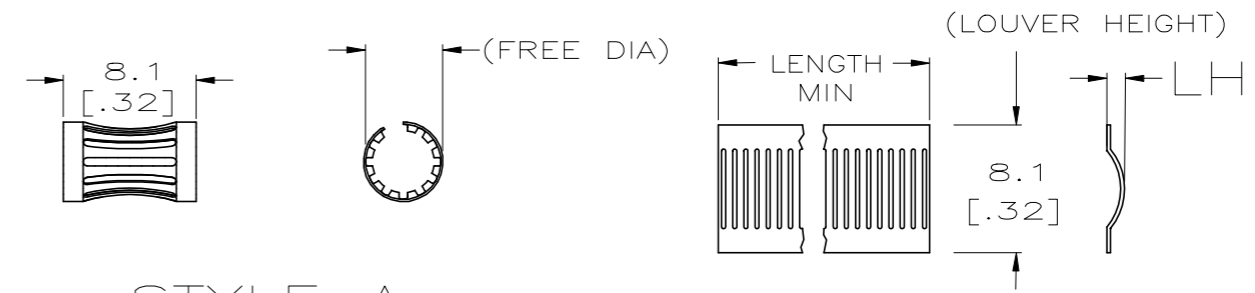


THIS DRAWING IS UNPUBLISHED. RELEASED FOR PUBLICATION  
 © COPYRIGHT - - ALL RIGHTS RESERVED.

REVISIONS					
P	LTR	DESCRIPTION	DATE	DWN	APVD
V		REVISED PER ECO-15-011608	04NOV2015	NK	MZ
W		REVISED PER ECO-18-000435	17JAN2018	RS	MZ
Y		REVISED PER ECO-19-014914	27SEP2019	RS	MZ

STYLE	(FREE DIA)	LH	LENGTH	MAT'L (NOTE)	MATING PIN Ø REF	PLATING (NOTE NO.)	NUM LOUV	MAT'L THK	REF	PART NUMBER
A	[.46]	[.028]	--	12	9.5[.375]	6	38	0.18[.007]	04121	5-192043-0
A	[.46]	[.028]	--	12	9.5[.375]	1-2	38	0.18[.007]	04128	4-192043-9
A	[.46]	[.028]	--	12	9.5[.375]	UNPL	38	0.18[.007]	04120	4-192043-8
A	[.55]	[.024]	--	12	9.5[.375]	6	38	0.15[.006]	04108	4-192043-7
A	[.60]	[.028]	--	12	9.5[.375]	3-2	39	0.15[.006]	--	4-192043-6
A	[.55]	[.024]	--	12	9.5[.375]	3-2	38	0.15[.006]	04053	4-192043-5
A	[.53]	[.024]	--	12	9.5[.375]	1-2	38	0.15[.006]	04067	4-192043-4
A	--	--	--	12	9.5[.375]	1-2	38	0.15[.006]	04092	4-192043-3
SUPERSEDED BY 4-192043-1										
A	[.55]	[.024]	--	12	9.5[.375]	UNPL	38	0.15[.006]	04071	4-192043-1
A	[.55]	[.026]	--	12	9.5[.375]	5-2	38	0.12[.005]	--	4-192043-0
A	[.55]	[.026]	--	13	9.5[.375]	1-2	38	0.12[.005]	04174	3-192043-9
A	[.55]	[.026]	--	13	9.5[.375]	UNPL	38	0.12[.005]	--	3-192043-8
A	[.54]	[.026]	--	12	9.1[.359]	3-2	36	0.18[.007]	04204	3-192043-7
A	[.54]	[.026]	--	12	9.1[.359]	1-2	36	0.18[.007]	04184	3-192043-6
A	[.54]	[.026]	--	12	9.1[.359]	UNPL	36	0.18[.007]	04183	3-192043-5
A	--	--	--	12	8.9[.359]	3-2	35	0.115[.006]	04178	3-192043-4
A	--	--	--	12	8 [.315]	3-2	30	0.18[.007]	04177	3-192043-3
A	--	[.026]	--	12	8 [.315]	3-2	29	0.18[.007]	04179	3-192043-2
A	[.38]	[.026]	--	12	8 [.315]	1-2	29	0.18[.007]	04206	3-192043-1
A	[.38]	[.026]	--	12	8 [.315]	UNPL	29	0.18[.007]	04185	3-192043-0
A	[.43]	[.024]	--	12	8 [.315]	3-2	32	0.15[.006]	--	2-192043-9
A	[.40]	[.024]	--	12	8 [.315]	1-2	31	0.15[.006]	--	2-192043-8
A	[.43]	[.024]	--	12	8 [.315]	1-2	32	0.15[.006]	04076	2-192043-7
A	[.43]	[.024]	--	12	8 [.315]	UNPL	32	0.15[.006]	04052	2-192043-6
A	[.40]	[.026]	--	13	7.9[.312]	UNPL	32	0.12[.005]	04079	2-192043-5
A	--	--	--	12	7.5[.296]	1-2	32	0.18[.007]	04189	2-192043-4
A	--	--	--	12	7.49[.295]	3-2	30	0.15[.006]	04051	2-192043-3
A	--	--	--	12	7.44[.293]	3-2	29	0.12[.005]	04050	2-192043-2
A	--	--	--	12	7.14[.281]	3-2	28	0.20[.008]	04049	2-192043-1
A	[.45]	[.024]	--	12	7.1[.280]	3-2	28	0.15[.006]	04106	2-192043-0
A	[.45]	[.024]	--	12	7.1[.280]	UNPL	28	0.15[.006]	04199	1-192043-9
A	--	--	--	12	7[.276]	3-2	27	0.12[.005]	04047	1-192043-8
A	--	--	--	12	6.45[.254]	7-2	26	0.15[.006]	04065	1-192043-7
A	[.35]	[.024]	--	12	6.45[.254]	3-2	26	0.15[.006]	04075	1-192043-6
A	[.35]	[.024]	--	12	6.45[.254]	1-2	26	0.15[.006]	04086	1-192043-5
A	[.35]	[.024]	--	12	6.45[.254]	UNPL	26	0.15[.006]	04046	1-192043-4
A	[.50]	[.026]	--	13	6.45[.254]	UNPL	26	0.12[.005]	04093	1-192043-3
A	[.29]	[.024]	--	12	6.35[.250]	3-2	26	0.20[.008]	04045	1-192043-2
A	[.29]	[.024]	--	12	6.35[.250]	1-2	26	0.20[.008]	04116	1-192043-1
SUPERSEDED BY 1-192043-6										
A	[.29]	[.016]	--	13	6.35[.250]	UNPL	26	0.12[.005]	04082	192043-9
A	[.28]	[.024]	--	12	6[.237]	3-2	24	0.15[.006]	04041	192043-8
A	[.28]	[.024]	--	12	6[.237]	UNPL	24	0.15[.006]	04042	192043-7
A	[.28]	[.024]	--	12	5.54[.218]	1-2	23	0.15[.006]	04146	192043-6
A	[.28]	[.024]	--	12	5.54[.218]	UNPL	23	0.15[.006]	04143	192043-5
A	--	--	--	12	5.5[.217]	3-2	21	0.20[.008]	04040	192043-4
A	[.27]	[.024]	--	12	5.5[.217]	3-2	21	0.15[.006]	04105	192043-3
A	[.26]	[.024]	--	12	5[.197]	3-2	20	0.15[.006]	04215	192043-2
A	[.26]	[.024]	--	12	5[.197]	UNPL	20	0.15[.006]	04216	192043-1



STYLE A  
(FEMALE)

STYLE C  
(STRIP)

- FINISH-SILVER PLATE 200 uINCH THICK MIN.
- FINISH-NICKEL PLATE 40 uINCH THICK MIN.
- FINISH-GOLD PLATE 10 uINCH THICK MIN.
- FINISH
- FINISH-GOLD PLATE 40 uINCH THICK MIN.
- FINISH-TIN PLATE 300 uINCH THICK MIN.
- FINISH-GOLD PLATE 50 uINCH THICK MIN.
- FINISH-NICKEL PLATE 100 uINCH THICK MIN.
- FINISH-PREPLATE
- 
- PLATING NOTES ARE TO BE INTERPRETED AS FOLLOWS,  
6-8 AS 6 OVER 8.
- MATERIAL-CDA172, BeCu.
- MATERIAL-STAINLESS STEEL
- PRODUCT IS SOLD BY THE FOOT.

- 15 OBSOLETE (PENDING).
- 16 MATERIAL: ELGILOY.
- 17 PRELIMINARY PART NUMBER.
- 18 FINISH: COPPER PLATE 10 uINCH THICK MIN.
- 19 OBSOLETE PARTS: OBSOLETE CIS STREAMLINING PER D.RENAUD/D.SINISI

STYLE	(FREE DIA)	LH	LENGTH	MAT'L (NOTE)	MATING PIN Ø REF	PLATING (NOTE NO.)	NUM LOUV	MAT'L THK	REF	PART NUMBER
-------	------------	----	--------	--------------	------------------	--------------------	----------	-----------	-----	-------------

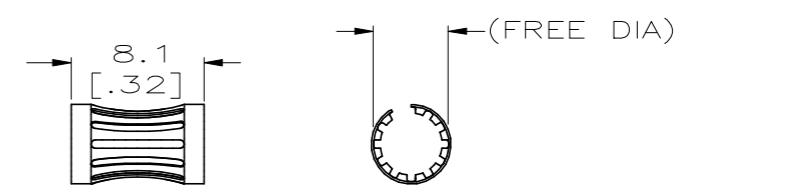
THIS DRAWING IS A CONTROLLED DOCUMENT.

DIMENSIONS: mm(INCHES)	TOLERANCES UNLESS OTHERWISE SPECIFIED: 0 PLC ± - 1 PLC ± - 2 PLC ± 0.5 [.02] 3 PLC ± 0.25 [.010] 4 PLC ± - ANGLES ± -	DWN RA JAYNE 09-21-91 CHK J.TURNER 07-21-93 APVD - PRODUCT SPEC - APPLICATION SPEC -	TE Connectivity CONTACT BAND, FEMALE	
MATERIAL -	FINISH SEE TABLE	WEIGHT -	SIZE A2	CAGE CODE 00779
CUSTOMER DRAWING		DRAWING NO C-192043	RESTRICTED TO -	
		SCALE 1:1	SHEET 1 of 2	REV Y

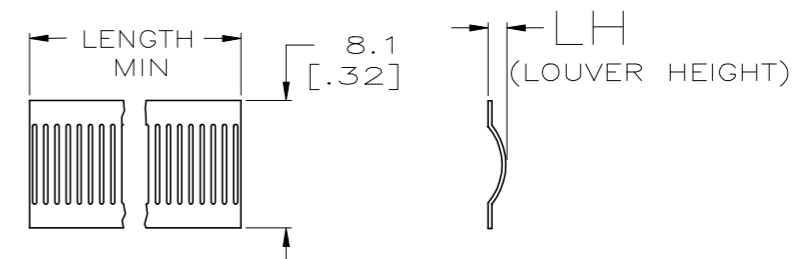
THIS DRAWING IS UNPUBLISHED. RELEASED FOR PUBLICATION  
 © COPYRIGHT - By - ALL RIGHTS RESERVED.

REVISIONS				
P	LTR	DESCRIPTION	DATE	APVD
-	-	SEE SHEET 1	-	-

STYLE	(FREE DIA)	LH	LENGTH	MAT'L (NOTE)	MATING PIN $\phi$ REF	PLATING (NOTE NO.)	NUM LOUV	MAT'L THK	REF	PART NUMBER
A	[.09]	[.024]	--	12	1.57[.062]	3-2	7	0.12[.005]	--	9-192043-9
A	[.21]	[.026]	--	12	4.39[.173]	3-18	17	0.15[.006]	--	9-192043-8
A	[.17]	[.026]	--	16	3.17[.125]	3-2	13	0.12[.005]	--	9-192043-7
A	[1.00]	[.026]	--	12	18.4[.725]	1-2	73	0.15[.006]	--	9-192043-6
C	--	[.038]	NOTE 14	12	--	--	2,9	0.15[.006]	--	9-192043-5
A	[.16]	[.026]	--	12	3.2[.125]	3-2	11	0.15[.006]	--	9-192043-4
A	[.21]	[.026]	--	12	3.98[.157]	1-2	14	0.15[.006]	--	9-192043-3
A	[.21]	[.026]	--	12	3.98[.157]	UNPL	14	0.15[.006]	--	9-192043-2
C	--	[.016]	NOTE 14	12	--	UNPL	--	0.12[.005]	--	9-192043-1
C	--	[.030]	NOTE 14	12	--	UNPL	--	0.15[.006]	--	9-192043-0
A	[.58]	[.024]	--	12	11.1[.439]	UNPL	44	0.20[.008]	--	8-192043-9
A	[.50]	[.024]	--	12	10.4[.410]	UNPL	40	0.20[.008]	--	8-192043-8
--	--	--	--	--	--	--	--	--	--	8-192043-7
A	[.40]	[.024]	--	12	10.4[.408]	1-2	40	0.15[.006]	04220	8-192043-6
A	[.29]	[.024]	--	12	6.3[.250]	UNPL	26	0.20[.008]	--	8-192043-5
A	[.26]	[.024]	--	12	5.5[.217]	UNPL	21	0.15[.006]	--	8-192043-4
C	--	[.026]	NOTE 14	12	--	UNPL	--	0.15[.006]	--	8-192043-3
A	[.19]	[.024]	--	12	4.7[.187]	UNPL	18	0.15[.006]	--	8-192043-2
C	--	[.030]	[.46]	--	--	UNPL	15	0.15[.006]	--	8-192043-1
A	[.17]	[.028]	--	12	3.2[.125]	7-2	13	0.15[.006]	--	8-192043-0
A	[.65]	[.024]	--	12	15.3[.602]	UNPL	60	0.15[.006]	04224	7-192043-9
C	--	[.036]	NOTE 14	12	--	1-2	--	0.15[.006]	--	7-192043-8
A	[.16]	[.026]	--	12	3.17[.125]	UNPL	11	0.15[.006]	04229	7-192043-7
A	[.21]	[.024]	--	12	3.98[.157]	1-2	15	0.15[.006]	04230	7-192043-6
A	[.06]	[.018]	--	12	.6[.025]	UNPL	4	0.12[.005]	04225	7-192043-5
A	[.16]	[.026]	--	12	3.2[.125]	8	11	0.15[.006]	04227	7-192043-4
C	--	[.026]	NOTE 14	12	--	1-2	--	0.12[.005]	04001	7-192043-3
A	[.16]	[.026]	--	12	3.2[.125]	1-2	11	0.15[.006]	04228	7-192043-2
C	[.16]	[.036]	.37	12	--	UNPL	12	0.15[.006]	04221	7-192043-1
--	--	--	--	--	--	--	--	--	--	7-192043-0
A	--	--	--	12	25.4[1.00]	7-2	--	0.20[.008]	04058	6-192043-9
A	--	--	--	12	18[.709]	7-2	--	0.20[.008]	04056	6-192043-8
A	[.65]	[.024]	--	12	15.3[.602]	7-2	60	0.15[.006]	04074	6-192043-7
A	--	[.024]	--	12	12[.472]	8	48	0.20[.008]	04172	6-192043-6
A	[.72]	[.024]	--	12	12[.472]	3-2	48	0.20[.008]	04090	6-192043-5
A	[.72]	[.024]	--	12	12[.472]	1-2	48	0.20[.008]	04095	6-192043-4
A	[.72]	[.024]	--	12	12[.472]	UNPL	48	0.20[.008]	04096	6-192043-3
A	--	--	--	12	12[.472]	3-2	48	0.15[.006]	04055	6-192043-2
A	--	--	--	12	12[.472]	1-2	48	0.15[.006]	04091	6-192043-1
A	[.58]	[.024]	--	12	11.1[.439]	3-2	44	0.20[.008]	04205	6-192043-0
A	[.58]	[.024]	--	12	11.1[.439]	1-2	44	0.20[.008]	04201	5-192043-9
A	[.57]	[.024]	--	12	10.4[.410]	3-2	40	0.20[.008]	04154	5-192043-8
A	[.50]	[.024]	--	12	10.4[.408]	3-2	40	0.15[.006]	04186	5-192043-7
A	[.50]	[.024]	--	12	10.4[.408]	UNPL	40	0.15[.006]	04187	5-192043-6
A	[.50]	[.024]	--	12	9.5[.375]	1-2	38	0.20[.008]	04115	5-192043-5
A	[.50]	[.024]	--	12	9.5[.375]	UNPL	38	0.20[.008]	04176	5-193043-4
A	[.45]	[.030]	--	12	9.5[.375]	3-2	38	0.18[.007]	04209	5-192043-3
A	[.45]	[.030]	--	12	9.5[.375]	6	38	0.18[.007]	04207	5-192043-2
A	[.45]	[.030]	--	12	9.5[.375]	UNPL	38	0.18[.007]	04208	5-192043-1



STYLE A  
(FEMALE)



STYLE C  
(STRIP)

THIS DRAWING IS A CONTROLLED DOCUMENT.		DWN RA JAYNE 09-21-91	<b>STE</b> TE Connectivity
DIMENSIONS: mm(INCHES)		CHK J.TURNER 07-21-93	
TOLERANCES UNLESS OTHERWISE SPECIFIED:		APVD --	NAME
0 PLC ± -		PRODUCT SPEC --	CONTACT BAND, FEMALE
1 PLC ± -		APPLICATION SPEC --	
2 PLC ± 0.5 [.02]		SIZE	CAGE CODE
3 PLC ± 0.25 [.010]		A2	00779
4 PLC ± -		DRAWING NO	C-192043
ANGLES ± -		RESTRICTED TO	--
MATERIAL --	FINISH SEE TABLE	WEIGHT --	SCALE 1:1
CUSTOMER DRAWING		SHEET 2 OF 2	REV Y

单击下面可查看定价，库存，交付和生命周期等信息

[>>TE Connectivity\(泰科\)](#)