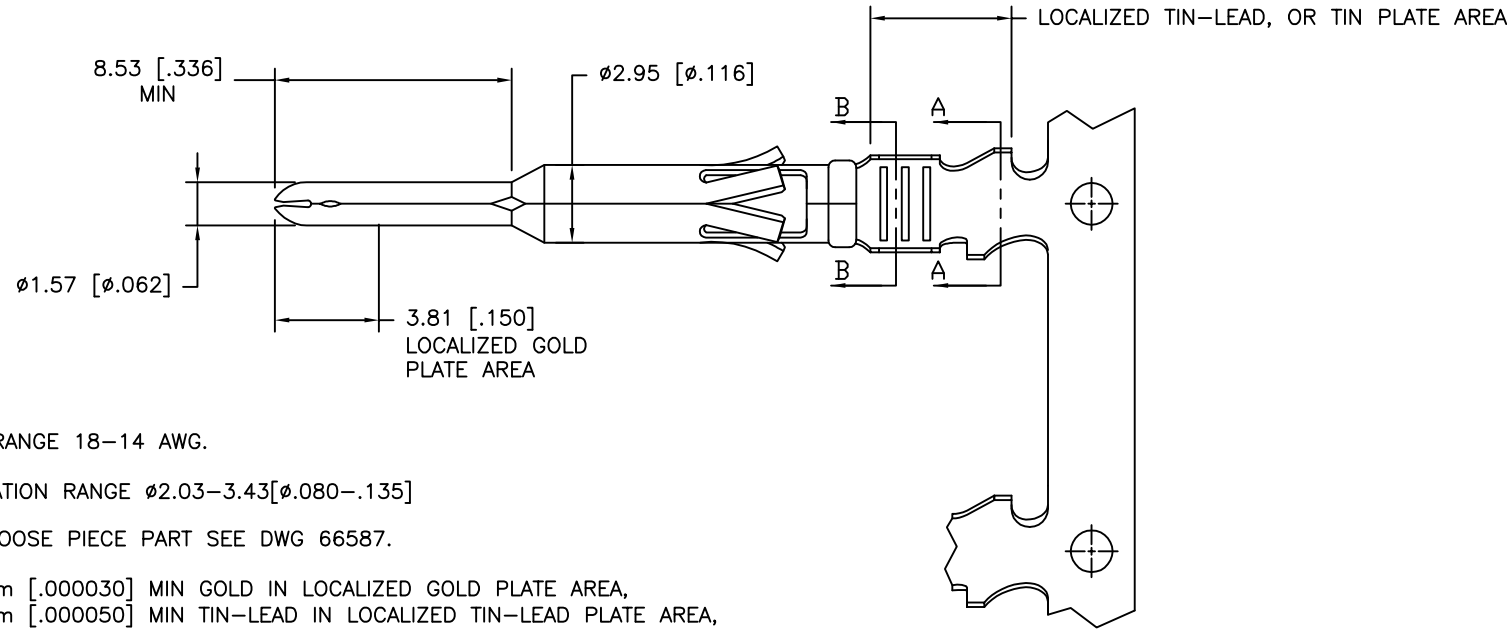
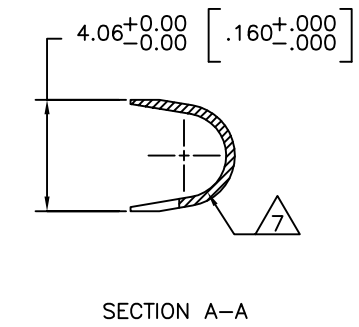
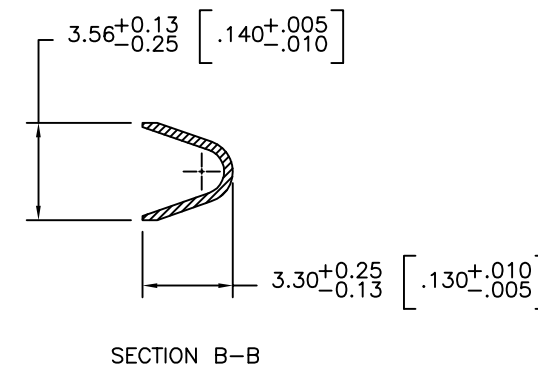
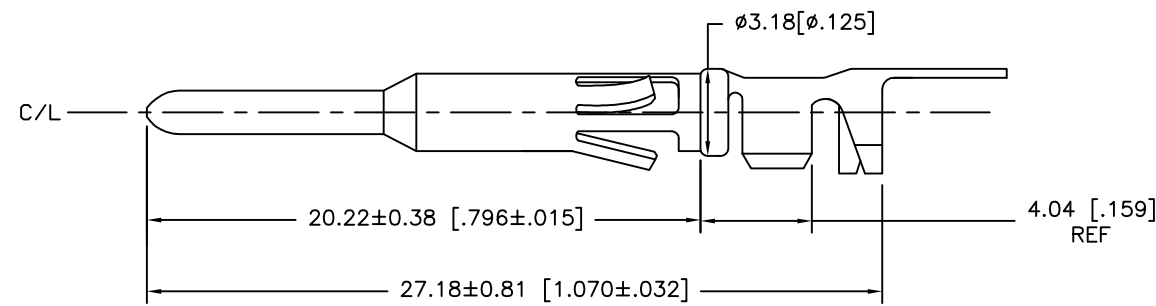
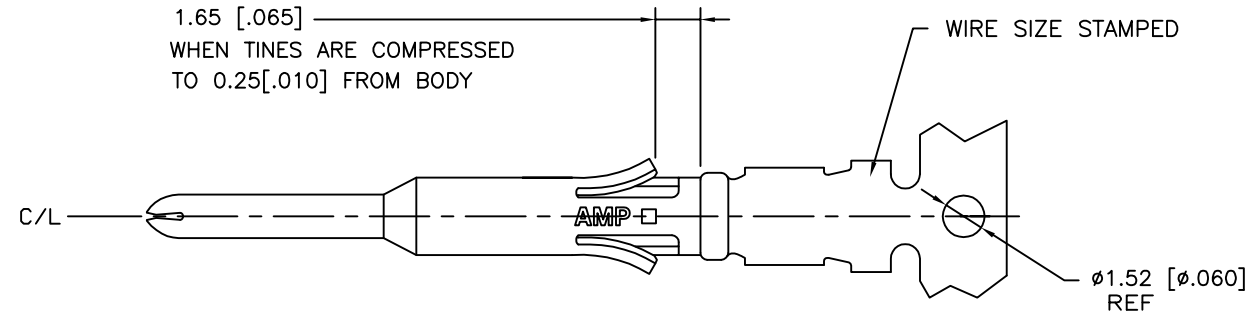


| P | LTR | DESCRIPTION | DATE | DWN | APVD |
|---|-----|---------------------------|-----------|-----|------|
| | H | EC 0G3B-0317-03 | 24APR03 | VF | GS |
| | J | REVISED PER ECO-17-009773 | 06JUL2017 | RS | MZ |



- 1 WIRE RANGE 18-14 AWG.
- 2 INSULATION RANGE $\phi 2.03-3.43[\phi .080-.135]$
- 3 FOR LOOSE PIECE PART SEE DWG 66587.
- 4 $0.76\mu\text{m} [.000030]$ MIN GOLD IN LOCALIZED GOLD PLATE AREA,
 $1.27\mu\text{m} [.000050]$ MIN TIN-LEAD IN LOCALIZED TIN-LEAD PLATE AREA,
BOTH OVER $1.27\mu\text{m} [.000050]$ MIN NICKEL.
- 5 TIN PLATED.
- 6 GOLD PLATING PER MIL-G-45204, TIN PER MIL-T-10727
AND NICKEL PER QQ-N-290.
- 7 $\phi 2.03-2.67[\phi .080-.105]$ INSULATION CRIMP WILL BE $3.05[.120]$ "O" CRIMP,
 $\phi 2.67-3.43[\phi .105-.135]$ INSULATION CRIMP WILL BE $3.56[.140]$ "O" CRIMP.
- 8 $0.76\mu\text{m} [.000030]$ MIN GOLD IN LOCALIZED GOLD PLATE AREA,
 $1.27\mu\text{m} [.000050]$ MIN TIN IN LOCALIZED TIN PLATE AREA,
BOTH OVER $1.27\mu\text{m} [.000050]$ MIN NICKEL.

| | | | |
|----------|------------------------------------|--------|-------------|
| OBsolete | REVERSE REELED FOR MINI-APPLICATOR | 8 | 66577-7 |
| | REVERSE REELED FOR MINI-APPLICATOR | 4 | 66577-4 |
| OBsolete | - | 4 | 66577-3 |
| | REVERSE REELED FOR MINI-APPLICATOR | 5 | 66577-2 |
| | - | 5 | 66577-1 |
| | DESCRIPTION | FINISH | PART NUMBER |

| DIMENSIONS: | | TOLERANCES UNLESS OTHERWISE SPECIFIED: | | DWN | | V. FURLER | | 12MAY03 | |
|----------------|--|--|--|------------------|--|---------------|--|---------|--|
| mm [INCHES] | | | | CHK | | G. STEINHAUER | | 12MAY03 | |
| | | 0 PLC ± - | | APVD | | G. STEINHAUER | | 12MAY03 | |
| | | 1 PLC ± - | | PRODUCT SPEC | | - | | - | |
| | | 2 PLC ± 0.13 [.005] | | APPLICATION SPEC | | - | | - | |
| | | 3 PLC ± - | | WEIGHT | | - | | - | |
| | | 4 PLC ± - | | CUSTOMER DRAWING | | SCALE | | 8.5:1 | |
| | | ANGLES ± - | | SEE TABLE 6 | | SHEET | | 1 OF 1 | |
| MATERIAL | | FINISH | | RESTRICTED TO | | - | | - | |
| BRASS MIL-C-50 | | - | | - | | A300779 | | C=66577 | |
| | | | | REV | | J | | | |



CONTACT, PIN, STRIP,
TYPE VI, MULTIMATE

单击下面可查看定价，库存，交付和生命周期等信息

[>>TE Connectivity\(泰科\)](#)