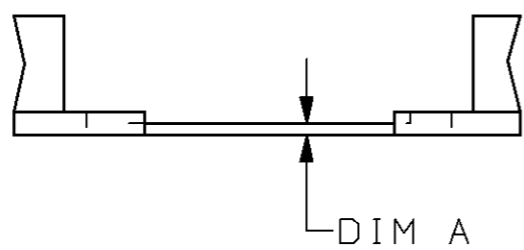
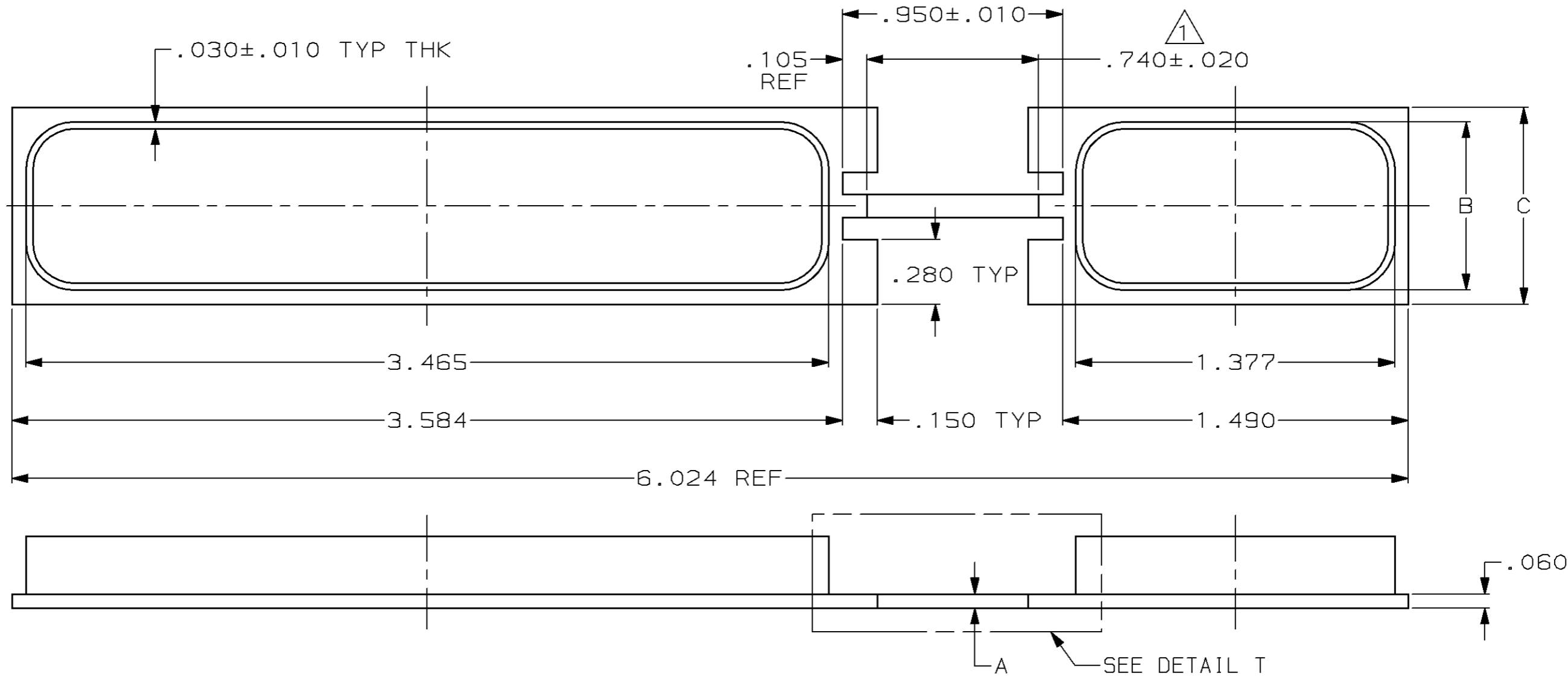


THIS DRAWING IS UNPUBLISHED. RELEASED FOR PUBLICATION, 19 .
 © COPYRIGHT 19 BY AMP INCORPORATED. ALL INTERNATIONAL RIGHTS RESERVED.

| LOC | DIST | P | F | REVISIONS | | | | |
|-----|------|---|---|-----------|-----|-------------------------|-------|------|
| | | | | ZONE | LTR | DESCRIPTION | DATE | APPD |
| DF | A0 | | | | F | REV PER 0600-1583-94 TT | 03-94 | RG |
| | | | | | G | REV PER 0600-5176-96 TA | 3-97 | AS |

⚠ DIM B HELD OVER THIS LENGTH FOR 211600-2 ONLY.



DETAIL T
FOR 211600-2 ONLY

| | | | | |
|-----------|-------|--------|------|-------------|
| 2 & 3 | 1.450 | .1.329 | .030 | 211600-2 |
| 1 | .850 | .727 | .060 | 211600-1 |
| CONN SIZE | C | B | A | PART NUMBER |

| | | |
|----------------------------------------------------------------------------------------------------------------------------------|--------------------------|-------------------------|
| DO NOT SCALE PRINT. UNLESS SPECIFIED DIMENSIONS IN mm [INCHES] TOLERANCES ON: 2 PLC DEC ± - 3 PLC DEC ± .015 ANGLES ± - | DR | 03-08-94 T. THOMPSON |
| | CHK | 03-08-94 S. WRIGHT |
| | APPD | 03-08-94 S. WRIGHT |
| | REL | 03-08-94 T. THOMPSON |
| MATERIAL | CONDUCTIVE THERMOPLASTIC | |
| FINISH | - | |
| PRODUCT SPEC | - | |
| APPLICATION SPEC | - | |
| WEIGHT | - | |

| | | |
|----------------------------------------------------------|--------------------|------------------------|
| AMP AMP Incorporated Harrisburg, PA 17105-3608 | | |
| NAME DUST COVER, ARINC 600, PLUG AND RECEPTACLE | | |
| SIZE B | CAGE CODE 00779 | DRAWING NO C-211600 |
| SCALE 2:1 | SHEET 1 OF 1 | |

THIS DRAWING IS A CONTROLLED DOCUMENT FOR AMP INCORPORATED. IT IS SUBJECT TO CHANGE AND THE CONTROLLING ENGINEERING ORGANIZATION SHOULD BE CONTACTED FOR THE LATEST REVISION.

单击下面可查看定价，库存，交付和生命周期等信息

[>>TE Connectivity\(泰科\)](#)