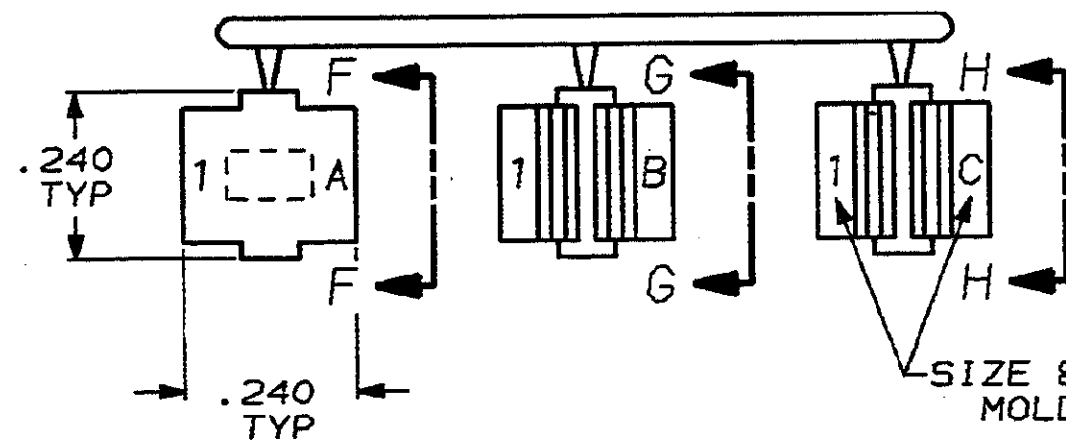


DRAWING MADE IN THIRD ANGLE PROJECTION

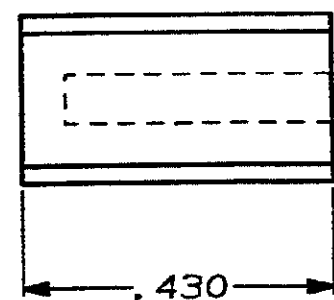
THIS DRAWING IS UNPUBLISHED. RELEASED FOR PUBLICATION, 19
 © COPYRIGHT 19 BY AMP INCORPORATED, HARRISBURG, PA. ALL INTERNATIONAL RIGHTS RESERVED. AMP PRODUCTS MAY BE COVERED BY U.S. AND FOREIGN PATENTS AND/OR PATENTS PENDING.

LOC		DIST		P		F		ZONE		LTR		REVISIONS				
BD	39											DESCRIPTION	DATE	APPROVED		
												A	REVISED & REDRAWN	ECN-1465	8-12-86	-

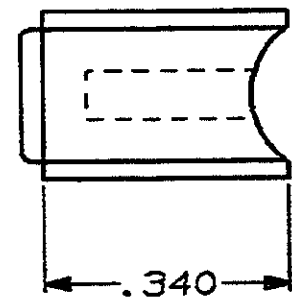


1. GATES ARE SHIPPED ATTACHED TO RUNNER.

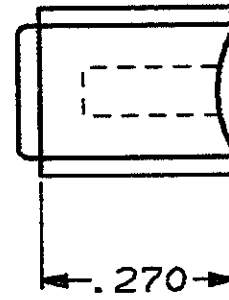
SIZE & GATE IDENTIFICATION LETTER MOLDED IN AREA INDICATED



VIEW F-F



VIEW G-G



VIEW H-H

AS SHOWN	207468-1
REMARKS	PART NUMBER

UNLESS OTHERWISE SPECIFIED DIMENSIONS ARE IN INCHES TOLERANCES ON: 2 PL DEC ±- 3 PL DEC ± .005 ANGLES ±-	DR <i>S. Weldon 9/16/86</i>	AMP AMP INCORPORATED Harrisburg, Pa. 17105	
	CHK <i>A. Richard 9/16/86</i>		
MATERIAL POLYPROPYLENE COLOR: BLACK	APPD <i>S. Schupely 9/16/86</i>	CABLE GATES, FOR SIZE 1, 90° & 180° EXIT, AMPLIMITE®	
FINISH	APPD <i>-U. Kumar 9/16/86</i>	SIZE	DRAWING NO
	PRODUCT SPEC	C	207468
	APPLICATION SPEC	FSCM NO	
	WEIGHT	00779	
		SCALE	SHEET 1 OF 1
		NTS	

1-C	.160
1-B	.140
1-A	
GATE	CABLE DIA REF

AMP 1471-7 REV 10-84

CUSTOMER DRAWING

单击下面可查看定价，库存，交付和生命周期等信息

[>>TE Connectivity\(泰科\)](#)