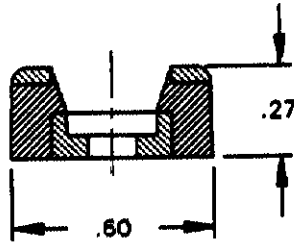
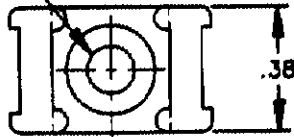


608801

.14 DIA HOLE FOR #6 SCREW



NOTE: ACCOMMODATES CABLE TIES WITH TENSILE VALUE OF 50 LBS. MAXIMUM.

THIS INFORMATION IS CONFIDENTIAL AND IS DISCLOSED TO YOU ON CONDITION THAT NO FURTHER DISCLOSURE IS MADE BY YOU TO OTHER THAN AMP PERSONNEL WITHOUT WRITTEN AUTHORIZATION FROM AMP INCORPORATED, HARRISBURG, PA.

CUSTOMER DRAWING UNPUBLISHED

608801-1

AS SHOWN - PACKAGED 100 PER SEALED POLY BAG WITH LABEL TO CONTAIN AMP P/N, DESCRIPTION, QUANTITY, DATE CODE, AND U.I. RECOGNITION MARK.

LOC D	PART No.		DESCRIPTION	
DIST 1	REVISION OF EACH ASSY NO. (WHEN BLANK, USE DWG REVISION)			
	QTY. REQ'D. PER ASSY.	PARTS LIST		
		MATERIAL NYLON - WHITE	HEAT TREAT <i>~</i>	FINISH <i>~</i>
		DIMENSIONS ARE IN INCHES	DRAWN BY: M.J. JULESINSKI	DATE: 9/2/90
		TOLERANCES UNLESS OTHERWISE SPECIFIED: 2 PL DEC ± .02 3 PL DEC ± 4 PL DEC ±	CHECK BY:	APPROVED BY: <i>J. Hanel</i> 9-14-90
		ANGLES ± SURF TEXTURE: <i>✓</i>	AMP INCORPORATED Harrisburg, Pa.	
		REMOVE BURRS, BREAK SHARP EDGES, .015 R. MAX.	NAME: 2 WAY CABLE TIE MOUNT #6 SCREW HOLE, W/O ADHESIVE	
	O ECN 082990	F.H. 9/90	SCALE: <i>Λ</i>	DRAWING No.: 608801
P	F	LTR	REVISION RECORD	A.P.
				SHEET: 1 of 1
				REV.: 0

单击下面可查看定价，库存，交付和生命周期等信息

[>>TE Connectivity\(泰科\)](#)