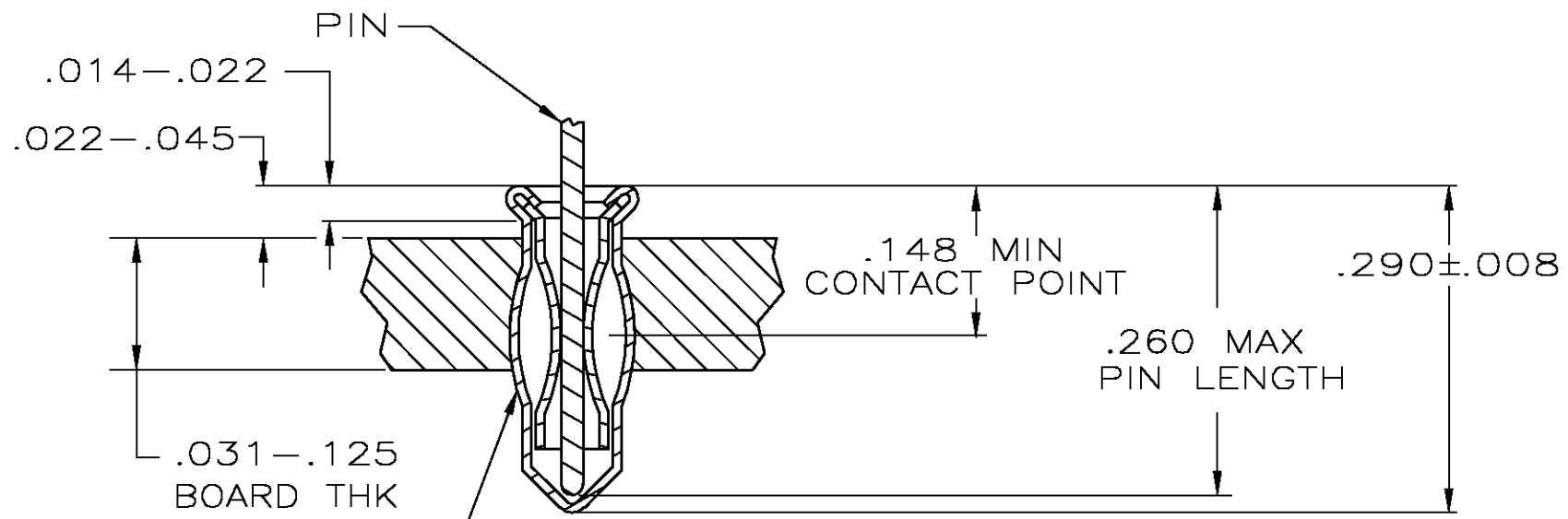
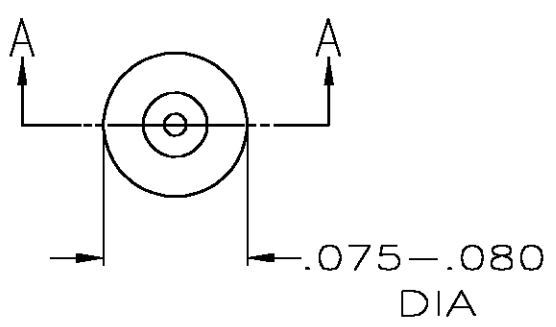


THIS DRAWING IS UNPUBLISHED. RELEASED FOR PUBLICATION  
 © COPYRIGHT - BY TYCO ELECTRONICS CORPORATION. ALL RIGHTS RESERVED.

LOC	DIST	REVISIONS					
GP	00	P	LTR	DESCRIPTION	DATE	DWN	APVD
			C	REVISED PER 0S11-0088-03	6-4-03	JB	KK



MSS INSERTION MACHINE CAPABLE OF  
 OVALIZING SOCKET FOR RETENTION IN PC BOARD  
 WITH .063±.003 DIA HOLE PRIOR TO  
 SOLDERING OPERATION

- MATERIAL:  
 EYELET - COPPER (QQ-C-576)  
 SPRING - BERYLLIUM COPPER (QQ-C-533)
- TIN PLATE(MIL-T-10727).000150 MIN THK
- GOLD PL(MIL-G-45204).000030 MIN THK OVER NICKEL (QQ-N-290) .000011 MIN THK ON CONTACT AREA.
- TIN PLATE(MIL-T-10727).000100 MIN THK
- TO INSURE 1/2 OZ MIN RETENTION DO NOT EXCEED .004 DIFFERENCE IN PIN DIA WHEN CHANGING TO A SMALLER DIA PIN
- HOLE SIZE FOR HAND INSERTION .063-.066
- TIN PLATE(ASTM B 545) .000100 MIN THK

.148/.260	.028/.033	TIN $\Delta$	TIN $\Delta$	6-645988-1
		GOLD $\Delta$	TIN $\Delta$	645988-2
		TIN $\Delta$		645988-1
LENGTH	DIA $\Delta$	SPRING	EYELET	PART NO
PIN		FINISH		

THIS DRAWING IS A CONTROLLED DOCUMENT.		DWN D.HOLLINGSWORTH 1/24/85	Tyco Electronics Corporation														
DIMENSIONS: INCHES		CHK P.MUTZABAUGH 3/4/85	Miniature Spring Socket Assembly														
TOLERANCES UNLESS OTHERWISE SPECIFIED:		APVD G.D.MILLER 3/4/85	NAME														
<table border="0"> <tr><td>0 PLC</td><td>± -</td></tr> <tr><td>1 PLC</td><td>± -</td></tr> <tr><td>2 PLC</td><td>± -</td></tr> <tr><td>3 PLC</td><td>± -</td></tr> <tr><td>4 PLC</td><td>± -</td></tr> <tr><td>ANGLES</td><td>± -</td></tr> </table>		0 PLC	± -	1 PLC	± -	2 PLC	± -	3 PLC	± -	4 PLC	± -	ANGLES	± -	PRODUCT SPEC	SIZE		
0 PLC	± -																
1 PLC	± -																
2 PLC	± -																
3 PLC	± -																
4 PLC	± -																
ANGLES	± -																
MATERIAL		APPLICATION SPEC	CAGE CODE	DRAWING NO	RESTRICTED TO												
FINISH		WEIGHT	A3 00779	C-645988	-												
CUSTOMER DRAWING			SCALE	SHEET	REV												
			10:1	1 OF 1	C												

单击下面可查看定价，库存，交付和生命周期等信息

[>>TE Connectivity\(泰科\)](#)