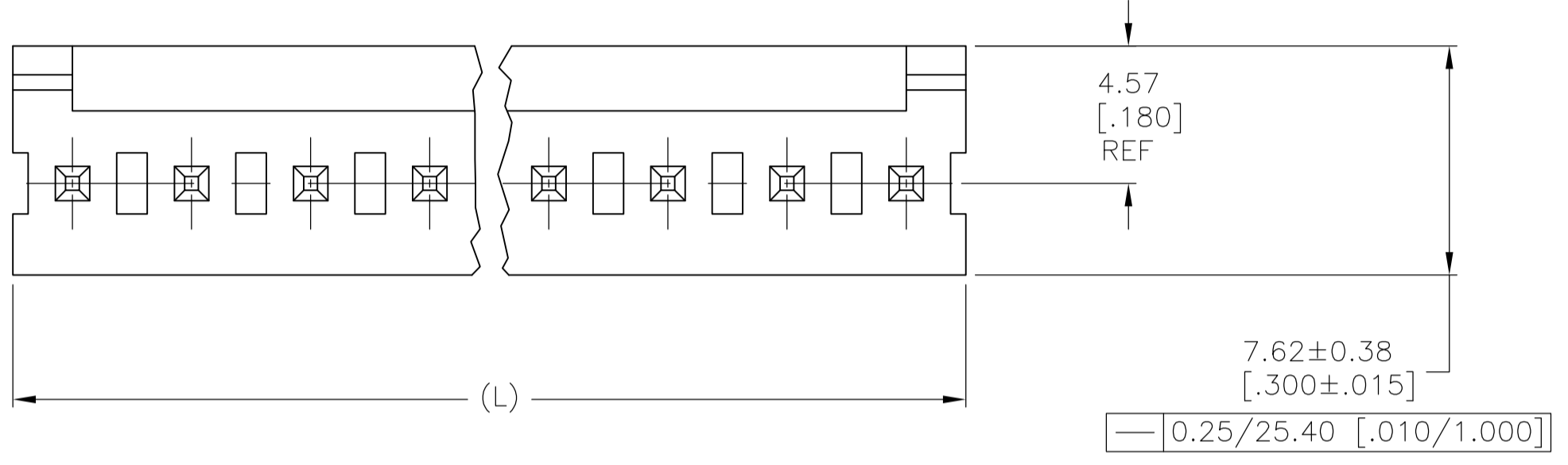
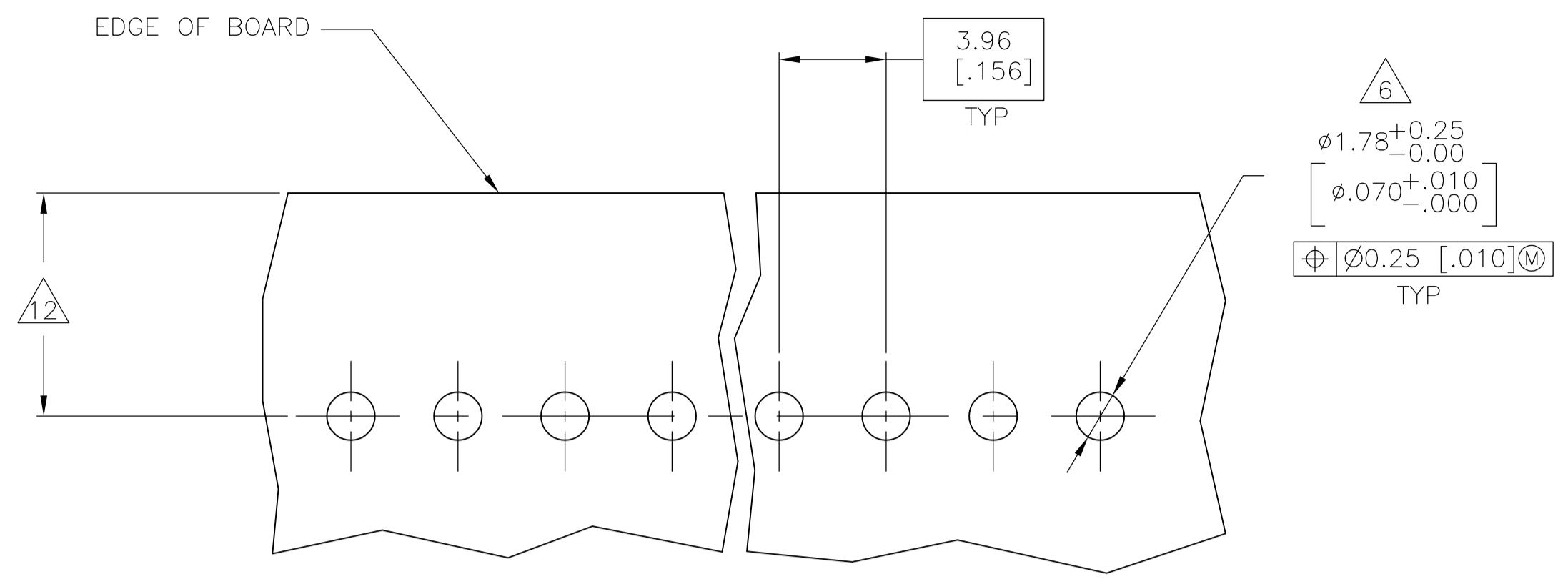
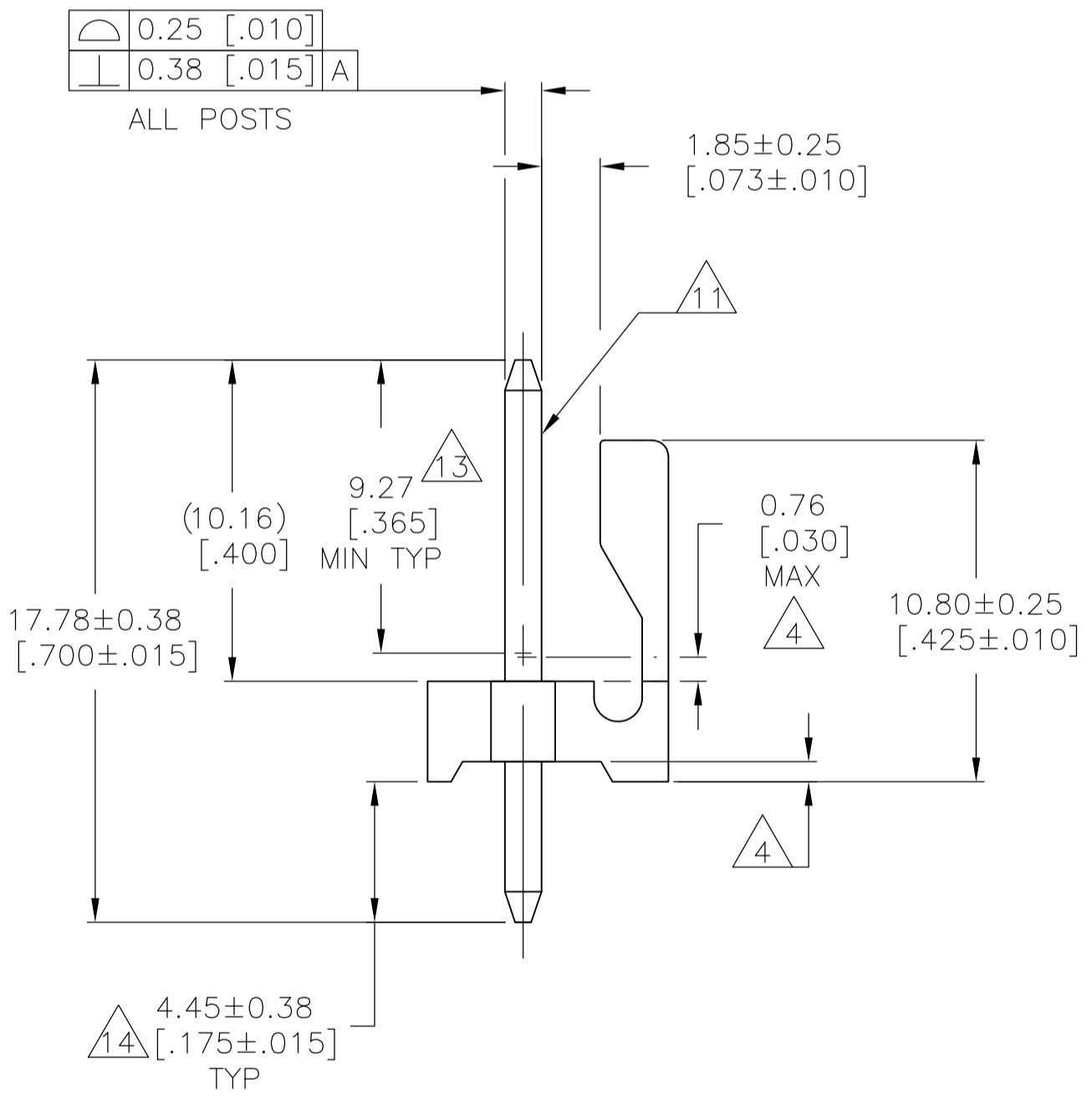
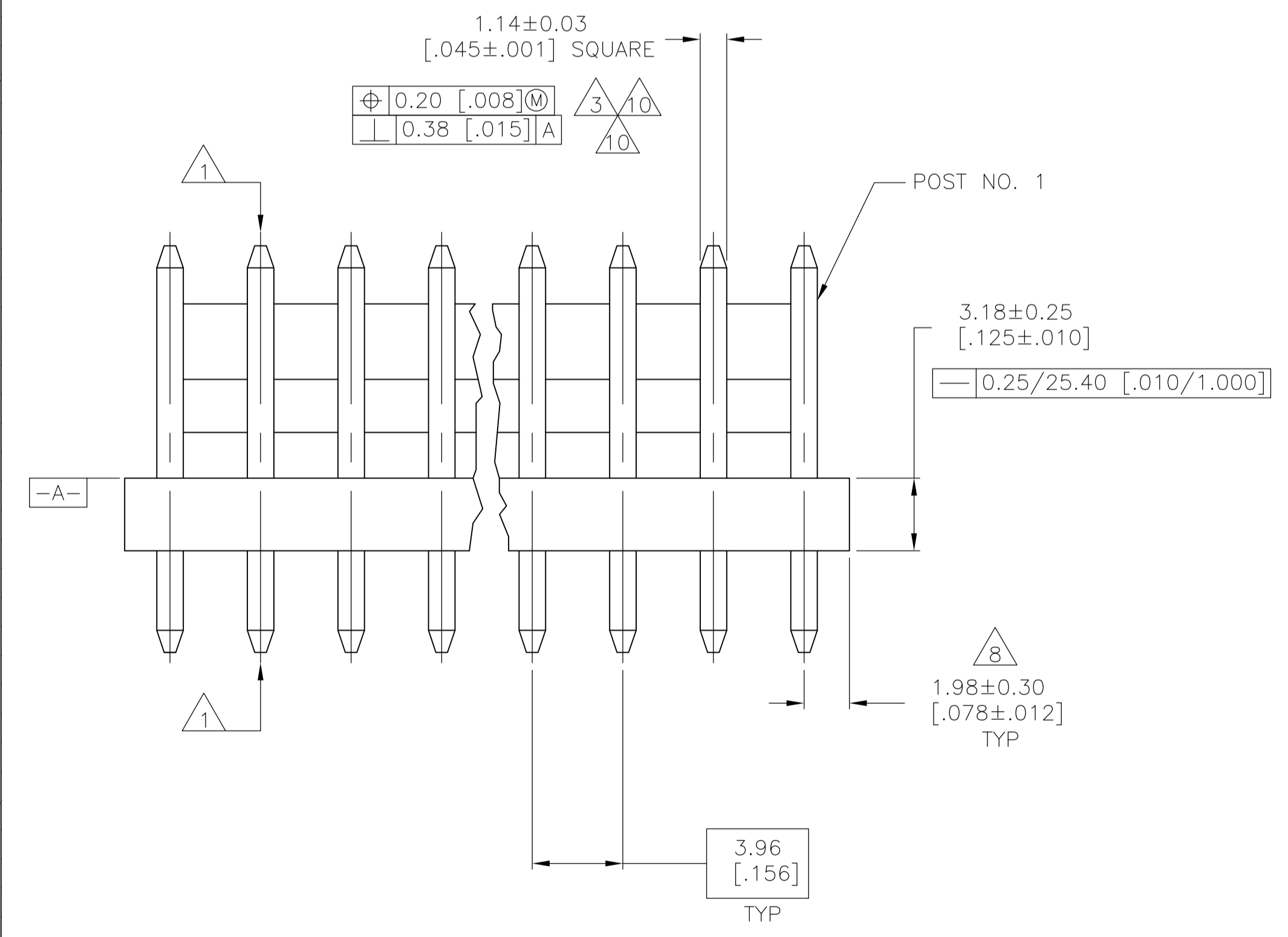


LOC	DIST	REVISIONS				
		REV	DESCRIPTION	DATE	BY	APPV
CM	00	H2	REVISED PER ECR-15-006687	26OCT2015	NK	NL



RECOMMENDED MOUNTING HOLE PATTERN FOR .109±0.016 THICK P.C. BOARD



- 1 POST TO WITHSTAND 13 NEWTONS (3 LBS.) MINIMUM AXIAL FORCE IN BOTH DIRECTIONS SHOWN WITHOUT DISLODGING.
- 2 TOLERANCES APPLY TO SOLDER SIDE OF BOARD.
- 3 MEASURED AT SURFACE -A-
- 4 PLASTIC FLASH PERMITTED IN THIS AREA.
- 5 PARTS COMPLY WITH AMP SOLDERABILITY SPEC. NO. 109-11-2.
- 6 ONE HOLE MAY BE UNDERSIZED 1.65/1.52 [0.065/0.060] DIA. FOR ASSEMBLY RETENTION DURING WAVE SOLDERING.
- 7 MATERIAL: HEADER-THERMOPLASTIC POLYESTER GLASS-FILLED 94V-0 (NATURAL) POST-COPPER ALLOY (SEE NOTES 13 & 14 FOR PLATING)
- 8 COORDINATE DIMENSION APPLIES FROM CENTER OF ACTUAL FEATURE.
- 9 PLASTIC BURRS CAUSED BY CUT-OFF TOOLING ARE PERMITTED WITHIN THE MAXIMUM TOLERANCE ENVELOPE.
- 10 POST TO BE MEASURED WHEN STRIP IS HELD FLAT.
- 11 POST MUST WITHSTAND TWO 90° BENDS AGAINST EXTRUSION WITHOUT BREAKING.
- 12 DIMENSION SHOULD BE 4.45 [0.175] MIN WHEN MATING WITH A MTA .156 CONNECTOR ASSEMBLY OR A SL-.156 CONNECTOR ASSEMBLY.
- 13 PLATING: GOLD PLATE AREA, 0.00038 [0.000015] GOLD OR 0.00008 [0.000003] MIN GOLD FLASH OVER 0.00030 [0.000012] PALLADIUM NICKEL, PER TE CONNECTIVITY'S DISCRETION, ALL SIDES, OVER NICKEL UNDERPLATE, 0.00127 [0.000050] MIN, ALL SIDES AND ENTIRE LENGTH OF POST.
- 14 PLATING: BRIGHT TIN/LEAD (93/7) PLATE AREA, 0.00381-0.00889 [0.000150-0.000350] THICK, ALL FOUR SIDES 4.45 [0.175] MINIMUM FOR -2 THRU -24. MATTE TIN PLATE AREA 0.00381-0.00889 [0.000150-0.000350] THICK ALL FOUR SIDES, 4.45 [0.175] FOR -32 THRU -54.
- 15 OBSOLETE PARTS: OBSOLETE CIS STREAMLINING PER D.RENAUD/D.SINISI
- 16 OBSOLETE PART NUMBER

LEAD	FRYLE	DIM (L)	NO.OF POSN	ASSEMBLY	SUPERSEDED	LEAD	DIM (L)	NO.OF POSN	ASSEMBLY	SUPERSEDED
		95.10 [3.744]	24	5-644766-4			95.10 [3.744]	24	2-644766-4	
		91.14 [3.588]	23	5-644766-3			91.14 [3.588]	23	2-644766-3	
		87.17 [3.432]	22	5-644766-2			87.17 [3.432]	22	2-644766-2	
		83.21 [3.276]	21	5-644766-1			83.21 [3.276]	21	2-644766-1	
		79.25 [3.120]	20	5-644766-0			79.25 [3.120]	20	2-644766-0	
		75.29 [2.964]	19	4-644766-9			75.29 [2.964]	19	1-644766-9	
		71.32 [2.808]	18	4-644766-8			71.32 [2.808]	18	1-644766-8	
		67.36 [2.652]	17	4-644766-7			67.36 [2.652]	17	1-644766-7	
		63.40 [2.496]	16	4-644766-6			63.40 [2.496]	16	1-644766-6	
		59.44 [2.340]	15	4-644766-5			59.44 [2.340]	15	1-644766-5	
		55.47 [2.184]	14	4-644766-4			55.47 [2.184]	14	1-644766-4	
		51.51 [2.028]	13	4-644766-3			51.51 [2.028]	13	1-644766-3	
		47.55 [1.872]	12	4-644766-2			47.55 [1.872]	12	1-644766-2	
		43.59 [1.716]	11	4-644766-1			43.59 [1.716]	11	1-644766-1	
		39.62 [1.560]	10	4-644766-0			39.62 [1.560]	10	1-644766-0	
		35.66 [1.404]	9	3-644766-9			35.66 [1.404]	9	644766-9	
		31.70 [1.248]	8	3-644766-8			31.70 [1.248]	8	644766-8	
		27.74 [1.092]	7	3-644766-7			27.74 [1.092]	7	644766-7	
		23.77 [0.936]	6	3-644766-6			23.77 [0.936]	6	644766-6	
		19.81 [0.780]	5	3-644766-5			19.81 [0.780]	5	644766-5	
		15.85 [0.624]	4	3-644766-4			15.85 [0.624]	4	644766-4	
		11.89 [0.468]	3	3-644766-3			11.89 [0.468]	3	644766-3	
		7.92 [0.312]	2	3-644766-2			7.92 [0.312]	2	644766-2	
		DIM (L)	NO.OF POSN	ASSEMBLY			DIM (L)	NO.OF POSN	ASSEMBLY	

THIS DRAWING IS A CONTROLLED DOCUMENT.

DIMENSIONS: mm [INCHES]	TOLERANCES UNLESS OTHERWISE SPECIFIED:	0 PLC ± -	1 PLC ± -	2 PLC ± ± 0.13 [0.005]	3 PLC ± -	4 PLC ± -	ANGLES ± -
-------------------------	--	-----------	-----------	------------------------	-----------	-----------	------------

MATERIAL: 7 FINISH: A

APPROVED: D. ROSSI	DATE: 07NOV02	NAME:	TE Connectivity
APPROVED: D. ROSSI	DATE: 07NOV02	NAME:	MTA-.156 HEADER ASSEMBLY, FRICTION LOCK, STRAIGHT, .045 SQUARE POST, .000015 GOLD, SPECIAL
SIZE: A1	SCALE: 5:1	SHEET: 1 of 1	REV: H2

单击下面可查看定价，库存，交付和生命周期等信息

[>>TE Connectivity\(泰科\)](#)