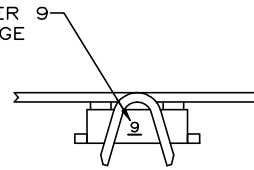


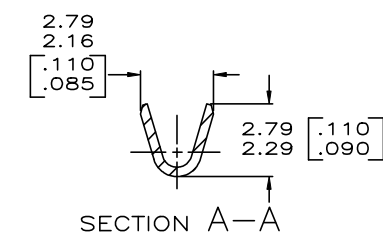
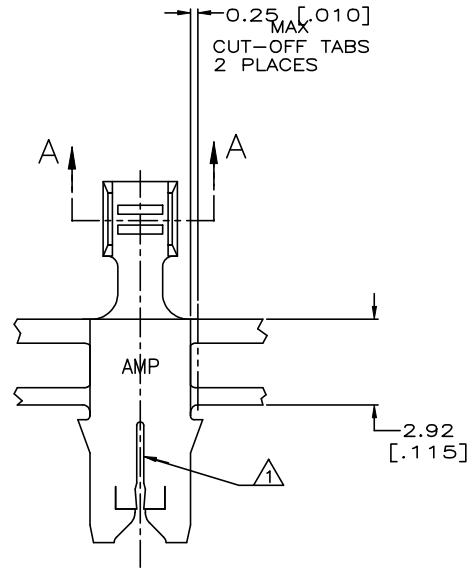
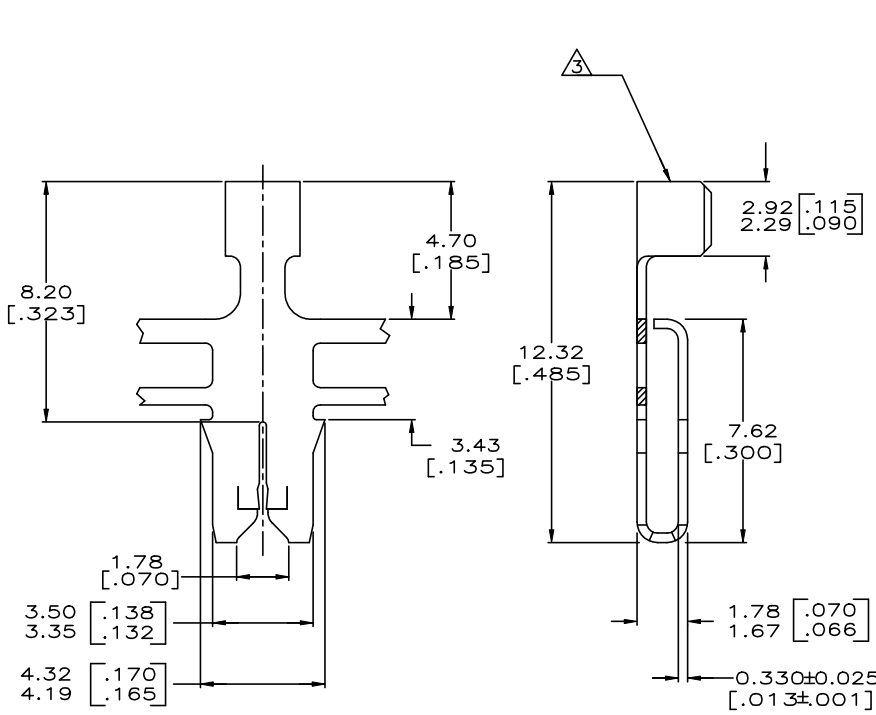
THIS DRAWING IS UNPUBLISHED. RELEASED FOR PUBLICATION .19
 © COPYRIGHT 19 BY AMP INCORPORATED. ALL RIGHTS RESERVED.

LOC	DIST	REVISIONS				
P	LTR	DESCRIPTION	DATE	DWN	APVD	
AF	50	G1	REVISED PER ECR-19-013909	01OCT2019	PC	MB

IDENTIFICATION NUMBER 9 FOR MAGNET WIRE RANGE



- 1 SLOT TERMINATES EITHER SINGLE OR DOUBLE MAGNET WIRES OF THE SAME TYPE AND SIZE, COPPER RANGE 0.36-0.50mm [#27-#24] AWG. ALUMINIUM RANGE 0.45-0.51mm [#25-#24] AWG. ALUMINIUM WIRE RANGE APPLIES FOR POST TIN PLATED PART NUMBERS ONLY.
- 2 CONTINUOUS STRIP ON REELS WITH TERMINALS LOCATED ON 8.38±0.08 [.330±.003] CENTERS.
- 3 WIRE BARREL TO ACCEPTS #22-#18 AWG STRANDED LEAD WIRE.



63237-1
PART NUMBER

THIS DRAWING IS A CONTROLLED DOCUMENT.		DWN MICHAEL S. FEHER 17SEP96	STE TE Connectivity
DIMENSIONS: mm [INCHES]		CHK RICHARD GRZYBOWSKI 25SEP96	
TOLERANCES UNLESS OTHERWISE SPECIFIED:		APVD NELSON E. NEFF 26SEP96	TERMINAL, F-CRIMP, 300 SERIES, MAG-MATE™
0 PLC ±		PRODUCT SPEC	
1 PLC ±		108-2012	
2 PLC ±0.25[.010]		APPLICATION SPEC	SIZE A2
3 PLC ±		114-2046	CAGE CODE 00779
4 PLC ±		FINISH 0.002032[.000080] MIN TIN	DRAWING NO. 63237
MATERIAL 4M BRASS		WEIGHT -	SCALE 8:1
		CUSTOMER DRAWING	SHEET 1 OF 1
			REV G1

单击下面可查看定价，库存，交付和生命周期等信息

[>>TE Connectivity\(泰科\)](#)