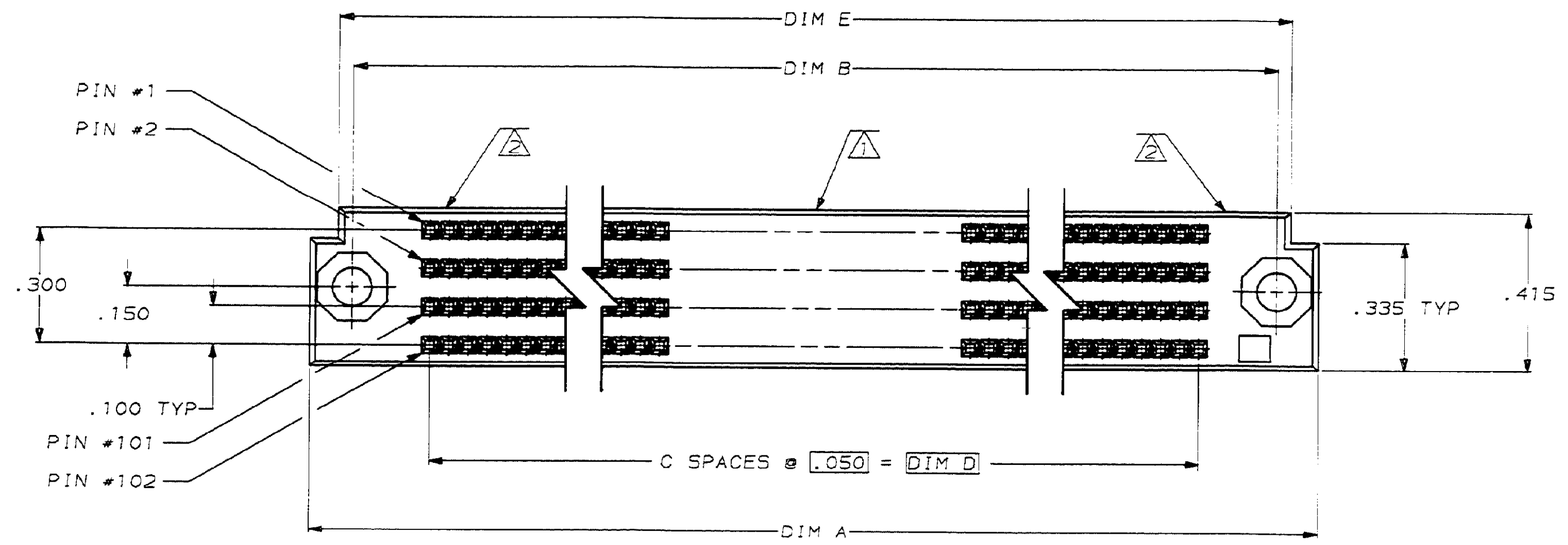
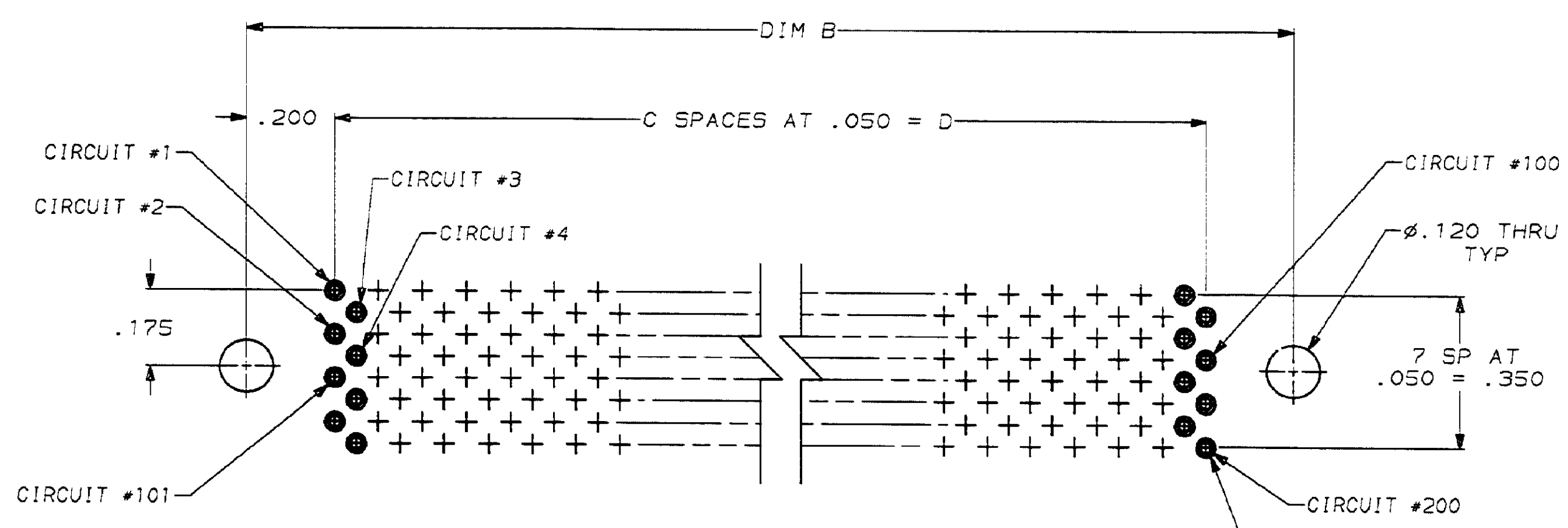
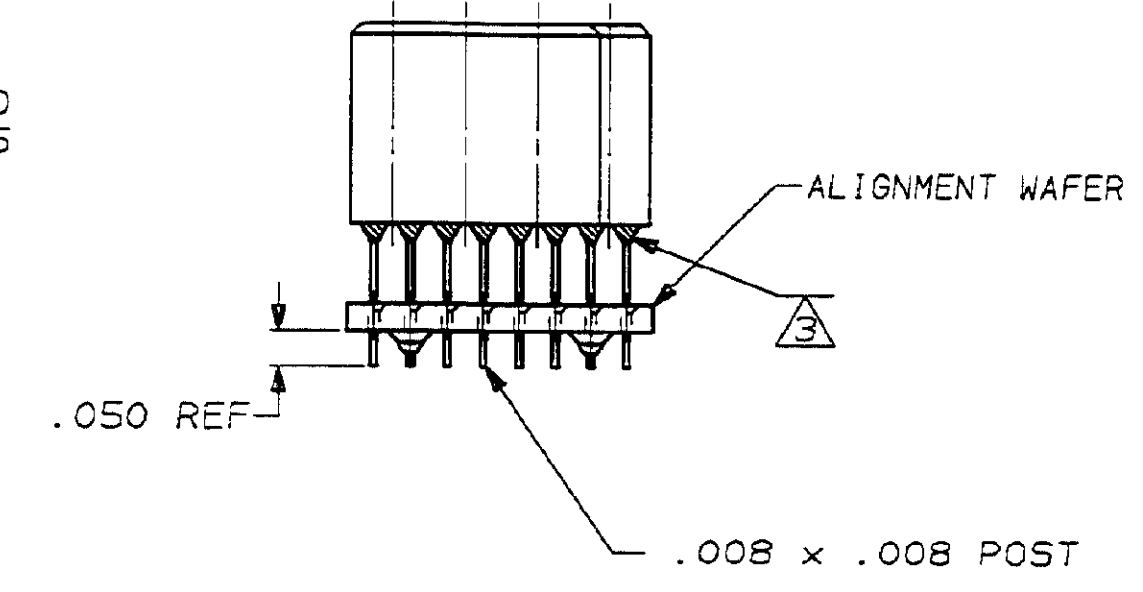
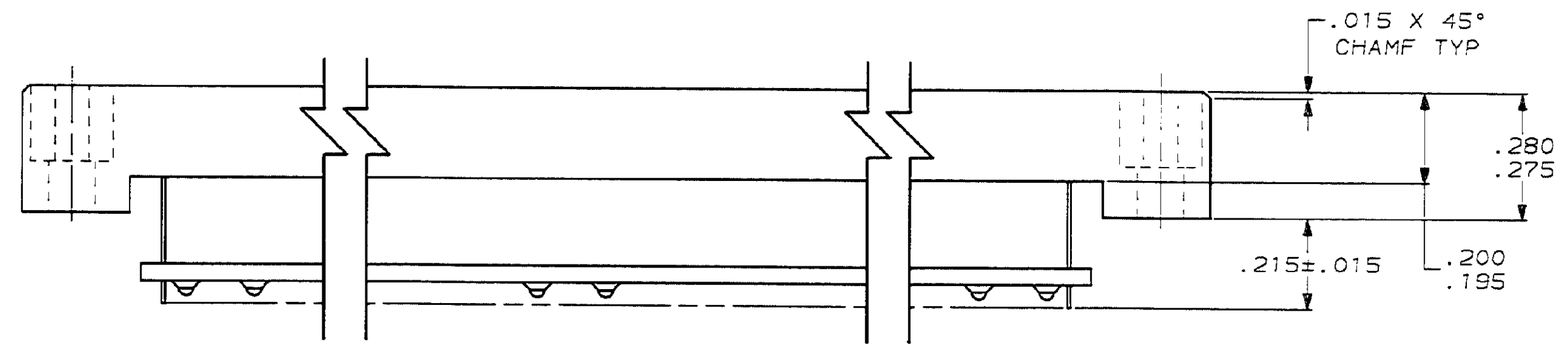


PROJ	LOC	DIST	REV	ZONE	LTR	DESCRIPTION	DATE	APPD
7739	DF	F0				O RELEASED PER 92-0135	TA	5-19-92
						A REVISED PER ECN DF-6586	TA	9-2-92
						B REV PER ECN DF-7320	WDK	5-5-93
						C REVISED PER 0600-0608-93	TA	8-3-93



- △ AMP, PART NUMBER AND DATE CODE MARKED THIS SURFACE.
- △ CAVITY I.D. NUMBERS (SEE TABLE) MARKED ON ENDS, THIS SIDE ONLY.
- △ EPOXY ADDED TO BOTTOM OF HOUSING FOR SEALING.



P.C. BOARD LAYOUT
 200 POSN SHOWN
 CONNECTOR SIDE OF BOARD

1 - 150	4.200	3.700	74	4.100	4.345	300	448445-5
1 - 76	2.350	1.850	37	2.250	2.495	152	448445-4
1 - 160	4.450	3.950	79	4.350	4.595	320	448445-3
1 - 100	2.950	2.450	49	2.850	3.095	200	448445-2
1 - 60	1.950	1.450	29	1.850	2.095	120	448445-1
CAVITY IDENTIFICATION	DIM E	DIM D	C	DIM B	DIM A	NUMBER OF POSITIONS	PART NUMBER

DO NOT SCALE PRINT. UNLESS SPECIFIED DIMENSIONS IN INCHES TOLERANCES ON:		DR 5-19-92 T. ALEXANDER		AMP AMP Incorporated Harrisburg, PA 17105-3608	
2 PLC DEC ±	0.005	CHK 5-19-92 D. GUTTER		NAME RCPT ASSY	
3 PLC DEC ±	0.005	APPD 5-19-92 D. GUTTER		SIZE D 00779	
ANGLES	-	APPD 7-23-92 T. ALEXANDER		DRAWING NO 448445	
MATERIAL	HSG-LIQUID CRYSTAL POLYMER, COLOR: GRAY CONTACT-COPPER ALLOY	PRODUCT SPEC	-	SCALE 4:1	
FINISH	.000050 MIN GOLD IN CONTACT AREA, TIN-LEAD SOLDER TAILS	APPLICATION SPEC	-	SHEET 1 OF 1	

单击下面可查看定价，库存，交付和生命周期等信息

[>>TE Connectivity\(泰科\)](#)