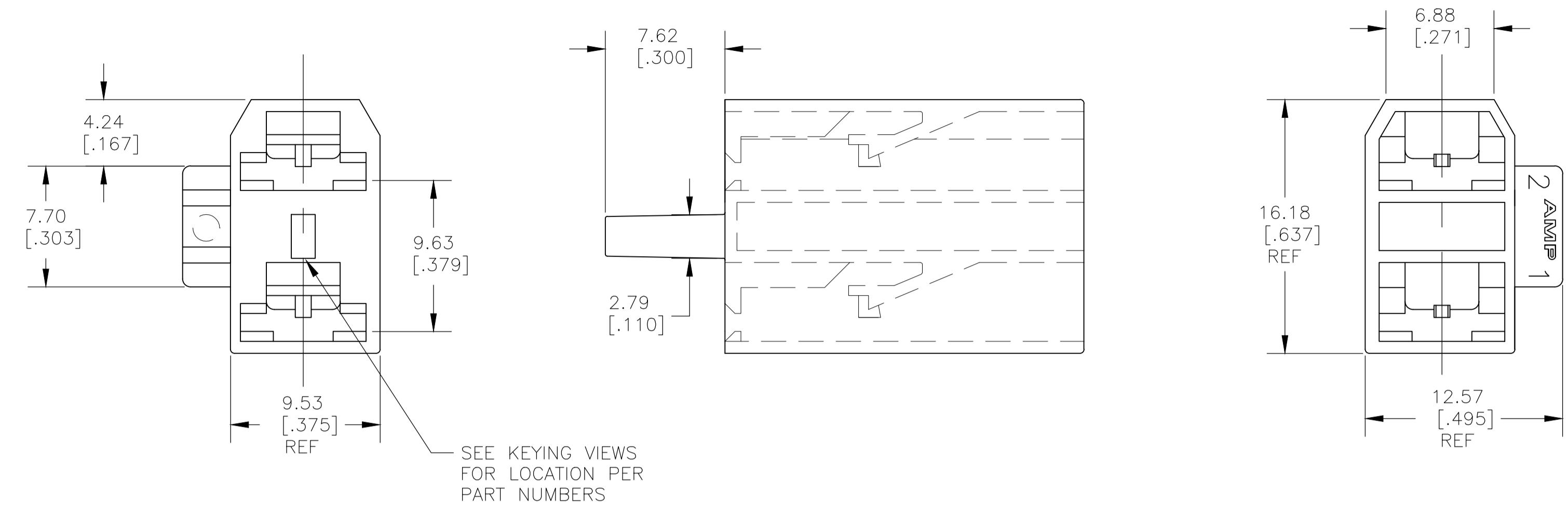
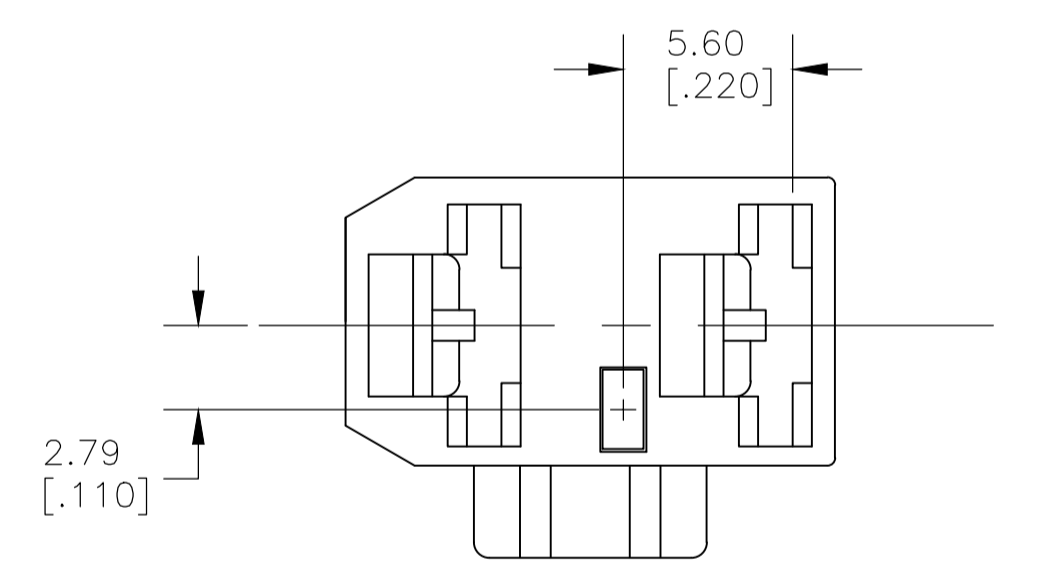
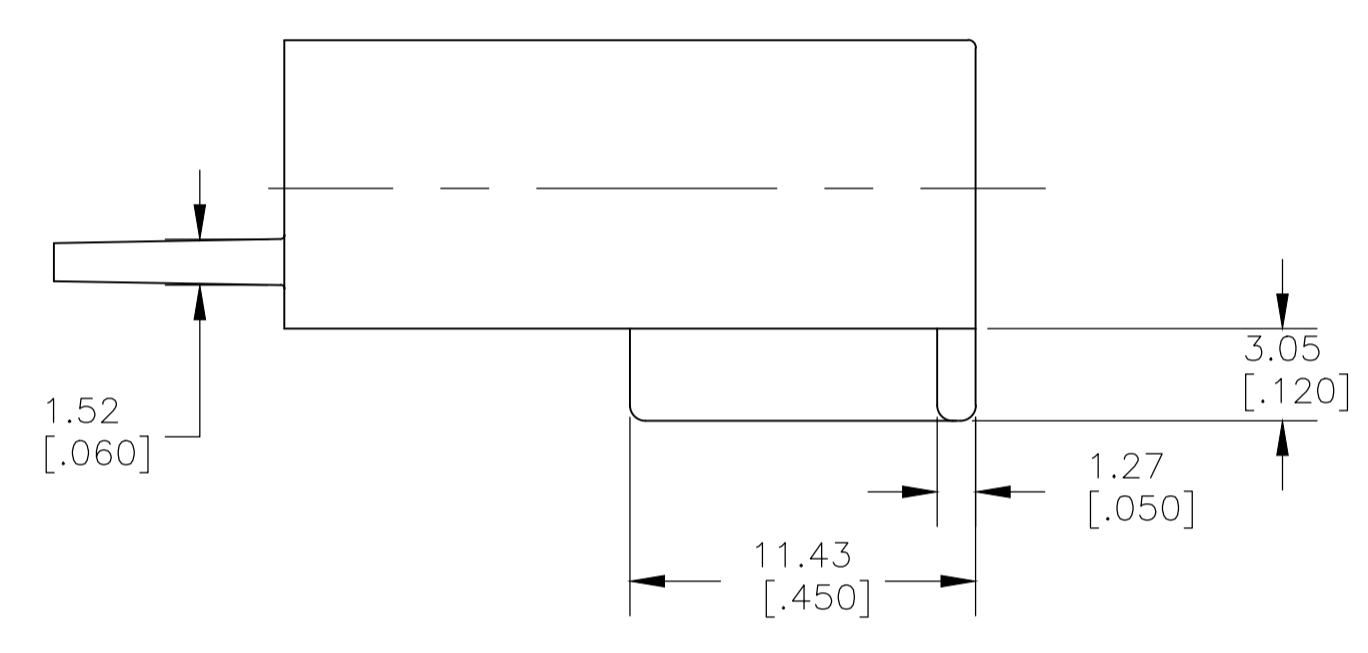


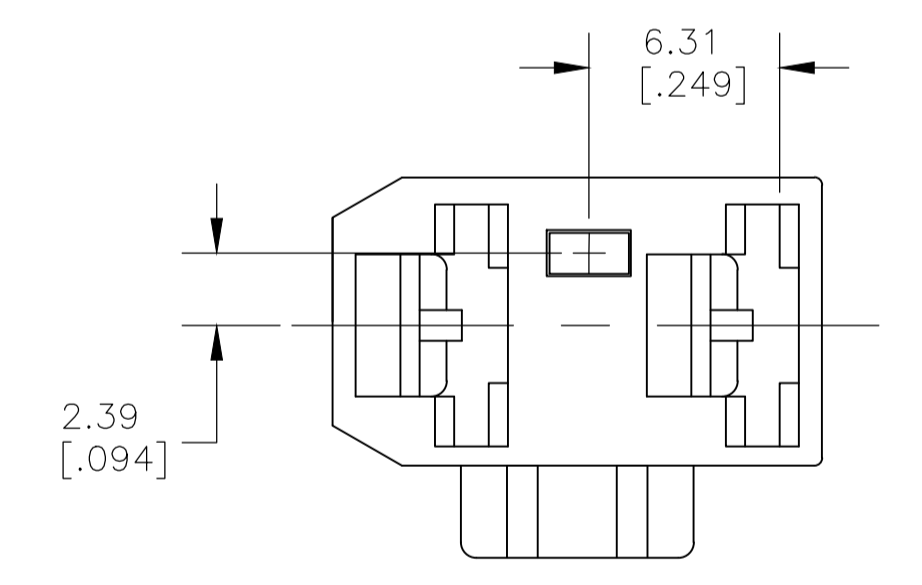
REVISIONS				
P	LTR	DESCRIPTION	DATE	BY
B1		REVISED PER ECR-19-013222	11SEP2019	BDA DS



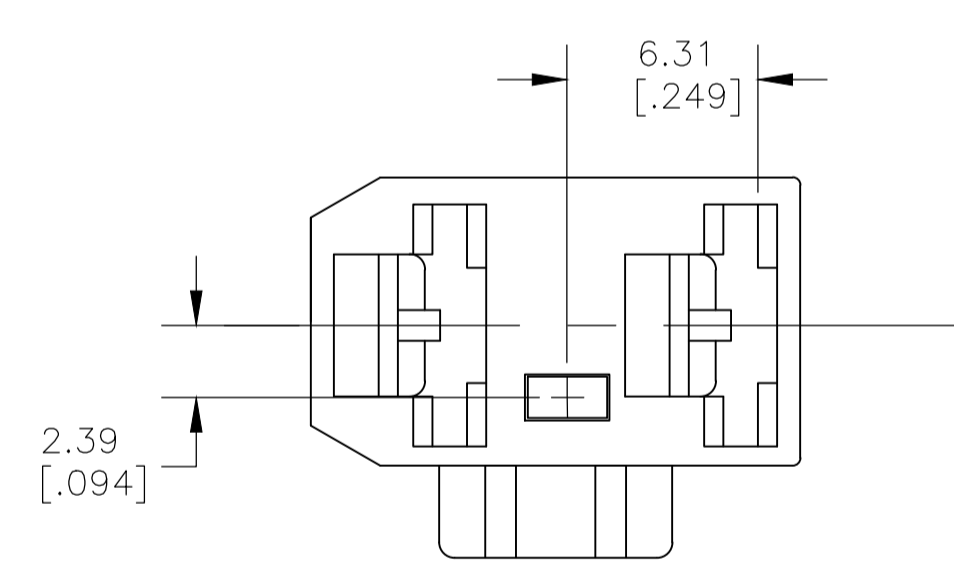
- 1 FITS 6.35 [.250] SERIES FASTON RECEPTACLES.
- 2 PRELIMINARY - NOT FOR PRODUCTION
- 3 OBSOLETE PARTS
- 4 PARTS MAY APPEAR MEDIUM COLORED TO LIGHT COLORED AND EXHIBIT A MARBLING EFFECT.



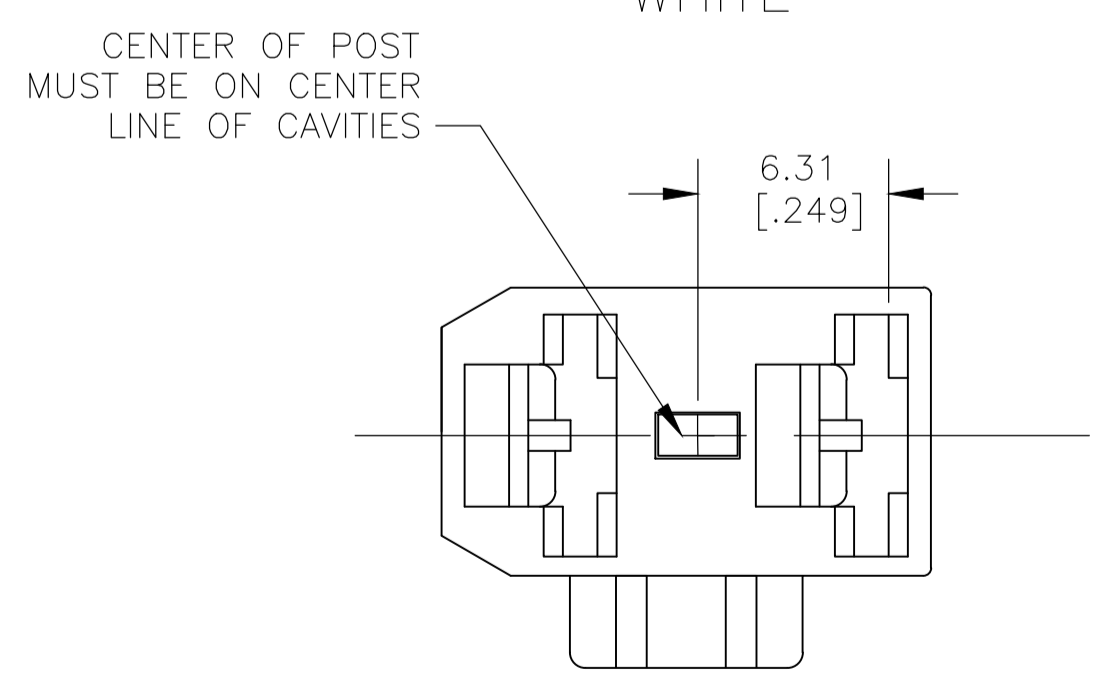
KEYING FOR -1 & -7 PART WHITE



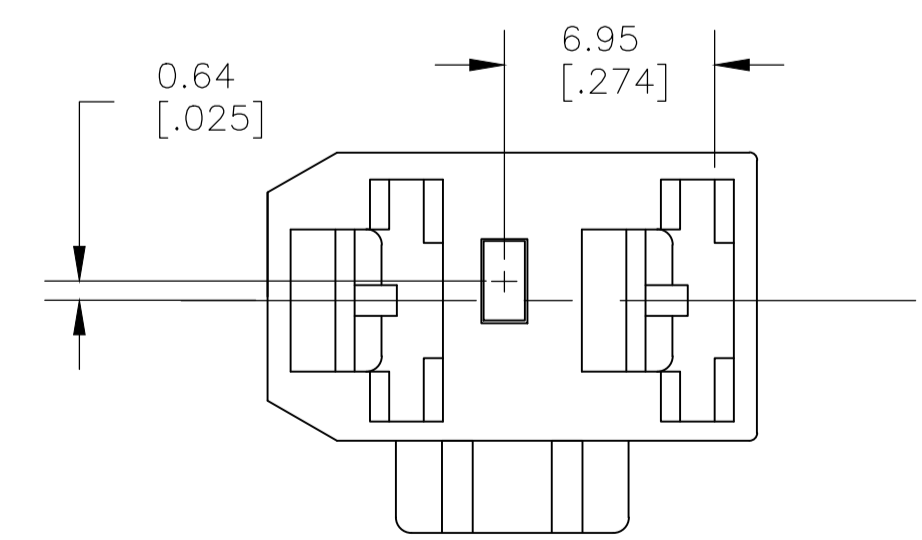
KEYING FOR -3 PART YELLOW



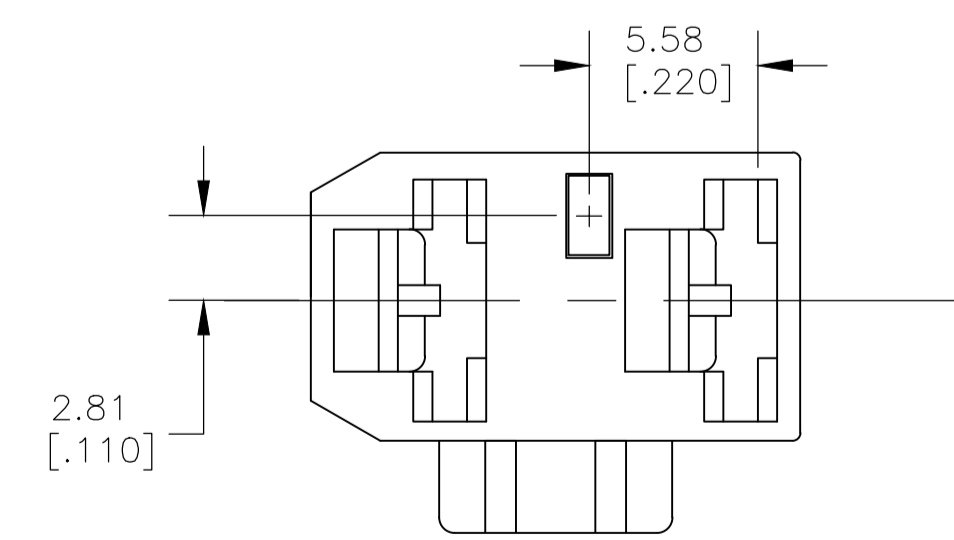
KEYING FOR -5 PART BLUE



KEYING FOR -2 & -8 PART GREEN



KEYING FOR -4 & 1-0 PART BLACK



KEYING FOR -6 PART RED

4	WHITE	66 NYLON WHITE	1-1969141-1
	BLACK	6/6 NYLON, V2	2 1-1969141-0
	GREEN	6/6 NYLON, V2	2 1969141-8
	WHITE	6/6 NYLON, V2	2 1969141-7
	RED	66, NYLON, V0	2 1969141-6
	BLUE	66, NYLON, V0	2 1969141-5
	BLACK	66, NYLON, V0	2 1969141-4
	YELLOW	66, NYLON, V0	2 1969141-3
	GREEN	66, NYLON, V0	3 1969141-2
	WHITE	66, NYLON, V0	1969141-1
	COLOR	MATERIAL	PART NO

OBSOLETE

SUPERSEDED BY 1-1969141-1

THIS DRAWING IS A CONTROLLED DOCUMENT.

DIMENSIONS: INCHES	TOLERANCES UNLESS OTHERWISE SPECIFIED:	0 PLC ± -	1 PLC ± -	2 PLC ± 0.25 [.010]	3 PLC ± -	4 PLC ± -	ANGLES ± 5°	FINISH COLOR - SEE TABLE
--------------------	--	-----------	-----------	---------------------	-----------	-----------	-------------	--------------------------

TE Connectivity Ltd. HOUSING, RECEPTACLE, FASTON, 6.35 [.250] SERIES, 2 CIRCUIT

SIZE: A1 CAGE CODE: 00779 DRAWING NO: 1969141

SCALE: 4:1 SHEET: 1 OF 1 REV: B1

单击下面可查看定价，库存，交付和生命周期等信息

[>>TE Connectivity\(泰科\)](#)