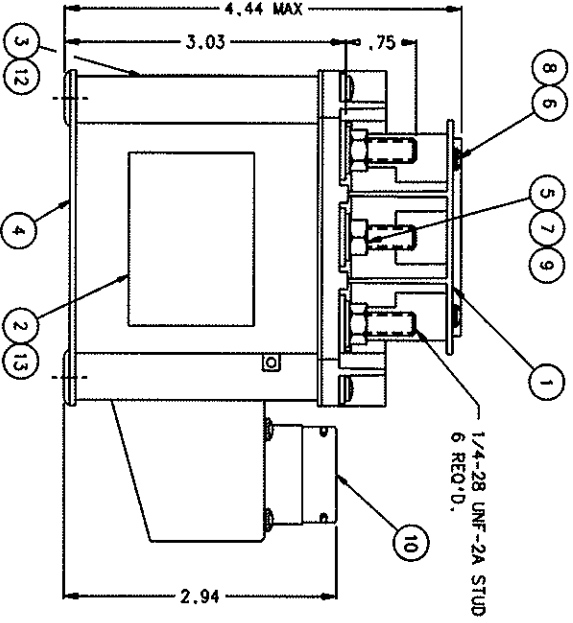
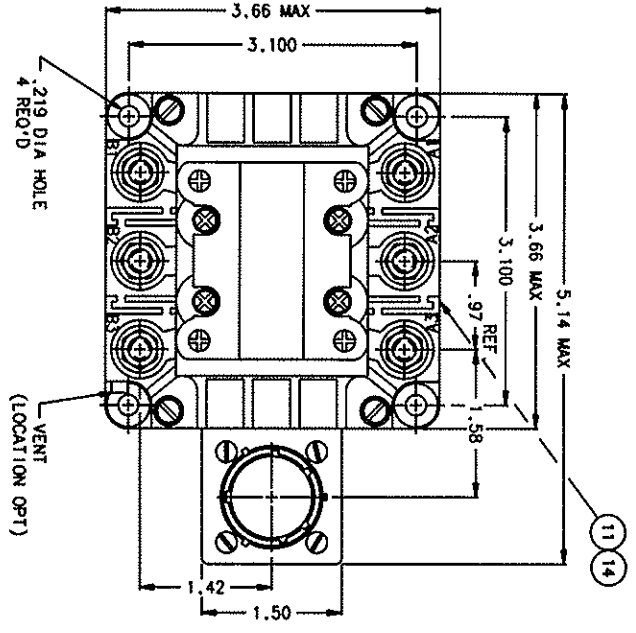


FAA/PMA

REVISIONS

SM	DESCRIPTION	DATE	APPROVED
K	39101 REDRAWN, FIND NOS 12-14 ADDED	99/04/07	RS
L	41635 BALLOON 11 WAS 2.51 & .93 REMOVED	00/02/17	RS

B-451 REV. 1



- NOTES:
1. TERMINAL COVER ITEM NO. 1 REMOVED FROM TOP VIEW.
 2. MOUNTING SURFACE SHALL PROVIDE ELECTRICAL GROUND.
 3. TRANSIENTS LIMITED TO ±42 VDC.

CONSTRUCTION
 MAIN CONTACTS
 CONFIGURATION
 VOLTAGE
 CURRENT RES.
 RES.
 RES.
 INTERRUPT

AUXILIARY CONTACTS
 CONFIGURATION
 VOLTAGE
 CURRENT RES
 IND
 LAMP

COIL DATA
 DUTY CYCLE
 OPERATING CHARACTERISTICS
 CLOSE VOLTAGE
 TIME
 RESISTANCE
 CURRENT
 TRIP VOLTAGE
 TIME
 RESISTANCE
 CURRENT
 ENVIRONMENTAL

OPERATING TEMP
 ALTITUDE
 SHOCK
 VIBRATION
 SINE

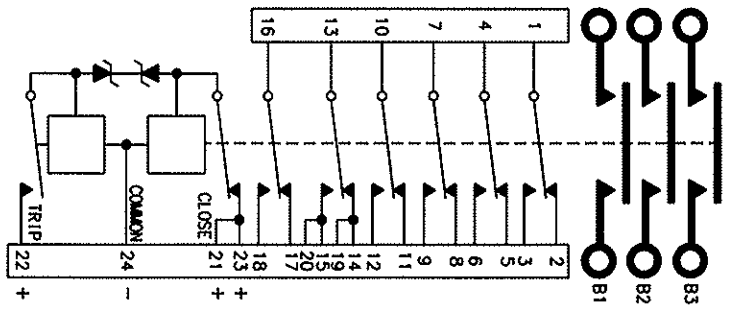
LIFE ELECTRICAL
LIFE MECHANICAL
 WEIGHT MAX

CONTINUOUS (SELF-DEENERGIZING)
 3PST (DOUBLE BREAK) MAGNETIC LATCHING
 115/200 VOLTS FREQ. 400 HZ
 175 AMP CONTINUOUS
 250 AMP 5 MIN
 375 AMP 15 SEC
 3,000 AMPS

6 PDT
 28 VDC, 115 VAC, 400 HZ
 7.5 AMP
 5 AMP
 5 AMP

15 TO 30 VDC
 20 MS MAX AT 15 VDC
 4.4 ±10% OHMS
 6 AMPS MAX
 15 TO 30 VDC
 15 MS AT 15 VDC
 5.0 ±10% OHMS
 5 AMPS MAX

-55°C TO +71°C MAX
 50,000 FT MAX
 15 G'S HALF SINE FOR 11 MS
 12 DA 5-28 HZ
 5 G'S 28-1000 HZ
 50,000 CYCLES MIN.
 100,000 CYCLES MIN.
 2 LBS 7 OZ



FIND NO	QTY	RECD	PART OR IDENTIFYING NO	DESCRIPTION OR IDENTIFICATION	F304 NO	DRAWING OR SPECIFICATION	MATERIAL OR NOTE
14	1		39529-024	OVERLAY - FAA/PMA			
13	1		39529-001	OVERLAY - NAMEPLATE			
12	1		39529-049	OVERLAY - WIRING DIAGRAM			
11	1		58400-032	PLATE - FAA/PMA			
10	1		52416-005 (REF)	CONNECTOR, BACC 45 FN-16-24P			
9	6		51807-034	WASHER LOCK, 1/4 SPLIT			
8	4		51804-021	WASHER LOCK - NO. 4 INT			AN935B416
7	6		51703-064	WASHER, 1/2 X 17/64 X .032 FLAT			AN935A4B
6	4		51204-251	SCREW 4-40 X 1/4 RD. HD.			BRONZE
5	6		50407-074	NUT 1/4-28 X 3/8 X 3/16 HEX			BRASS
4	1		39319-010	CONTRACTOR ASSEMBLY - PRIMARY			
3	1		39514-001	PLATE - WIRING DIAGRAM			
2	1		16043-001	PLATE - NAME			
1	2		30280-001	COVER-TERMINAL TOP			

UNLESS OTHERWISE SPECIFIED DIMENSIONS ARE IN INCHES TOLERANCES OR

2 PL DEC+3 PL DEC+ANGLES
 * .06 .010 * * *

REF.
 BOEING

DR BY: RLS 00/05/03
 CHK BY: RLS 00/05/03
 ENGR: DVC 00-03-03
 MFG: [Signature] 00-03-03
 RELEASE
 CONTR NO.
 GOVT App'l

HARTMAN ELECTRICAL MANUFACTURING
 MANSFIELD, OHIO

CONTRACTOR - 3PST MAGN. LATCH
 175 AMP 115/200 V. 400 HZ.

SIZE CODE IDENT DWG NO.
 C 74063 B-451

SCALE NONE SHEET

单击下面可查看定价，库存，交付和生命周期等信息

[>>TE Connectivity\(泰科\)](#)