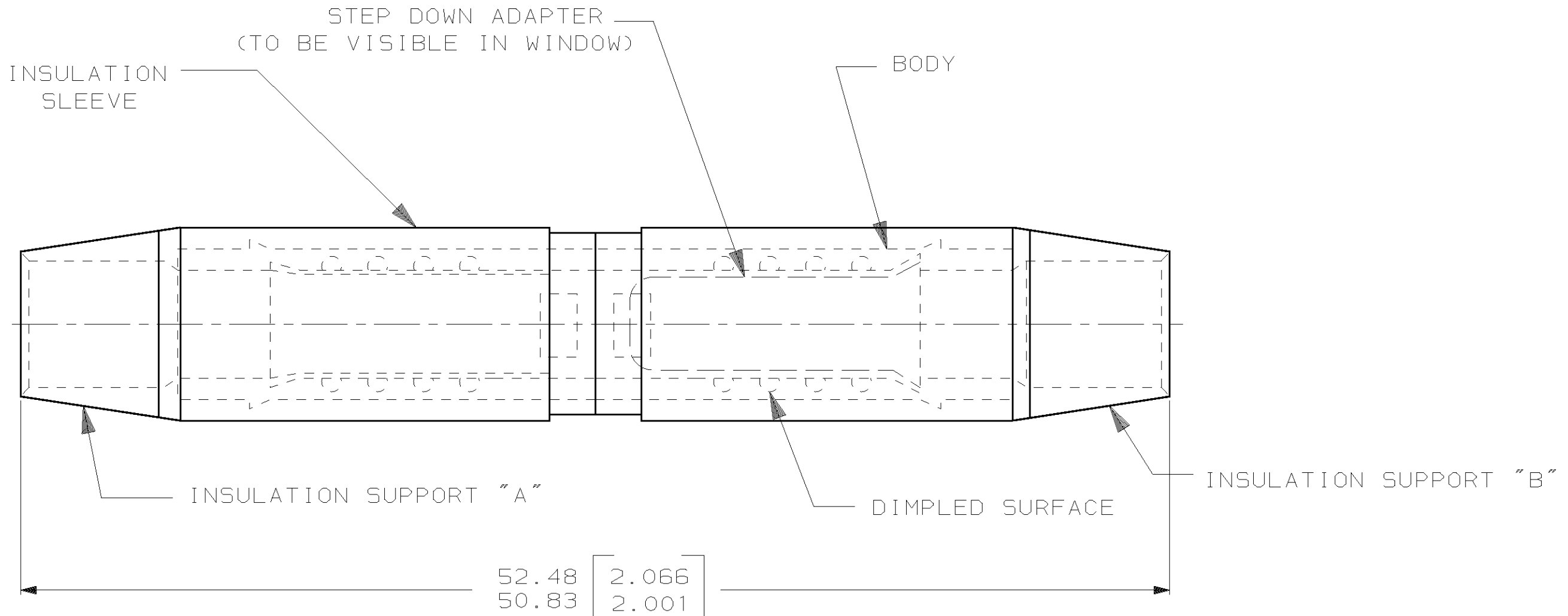


LOC	DIST	P	F	ZONE	LTR	DESCRIPTION	DATE	APPD
G	14					REV PER 063A-0284-02	14MAY02	JR MS

**AMP**  
**WIRE RANGE**  
 8 TO 12-10 AWG  
 STRANDED

1 WIRE INSULATION DIA 6.48 [ .255 ] MAX



AMP INCORPORATED CUSTOMER SERVICE SYSTEMS		MAX RECOMMENDED OPERATING TEMPERATURE: 105°C MAX	DO NOT SCALE PRINT. UNLESS SPECIFIED DIMENSIONS IN MM [INCHES] TOLERANCES ON : 2 PLC DEC ± .008 3 PLC DEC ± - ANGLES ± -	DR 14MAY02 JR RUTH CHK 14MAY02 MS FEHER APPD 14MAY02 T MICHIELUTTI APPD 14MAY02 T MICHIELUTTI	100 QTY	LOOSE PC PACKAGE TYPE	328569 PART NO
FOR ADDITIONAL PRODUCT INFORMATION OR COPIES OF DRAWINGS AND TECHNICAL DOCUMENTS	PRODUCT INFORMATION CENTER 1-800-522-6752	VOLTAGE RATING: 600 V MAX	MATERIAL COPPER PER ASTM B-152 NYLON, SUPPORT "A" COLOR, RED SUPPORT "B" COLOR, YELLOW SLEEVE, COLOR, RED	PRODUCT SPEC -	AMP AMP Incorporated Harrisburg, PA 17105-3608		
FOR APPLICATION TOOLING INFORMATION	TOOLING ASSISTANCE CENTER 1-800-722-1111	WIRE CROSS SECTIONAL AREA RANGE: 6.64-10.54mm <sup>2</sup> TO 2.62-6.64mm <sup>2</sup> STRANDED	FINISH TIN PLATE PER ASTM B-545	APPLICATION SPEC -	NAME SPLICE, BUTT, STEP-DOWN, SINGLE TO SINGLE, TERMINYL, WIRE SIZE 8 TO 12-10 AWG		
FOR ORDER ENTRY	1-800-526-5142	THIS DRAWING IS A CONTROLLED DOCUMENT FOR AMP INCORPORATED. IT IS SUBJECT TO CHANGE AND THE CONTROLLING ENGINEERING ORGANIZATION SHOULD BE CONTACTED FOR THE LATEST REVISION.		WEIGHT -	SIZE C	CAGE CODE 00779	DRAWING NO C-328569
					SCALE 4:1	SHEET 1 OF 1	

单击下面可查看定价，库存，交付和生命周期等信息

[>>TE Connectivity\(泰科\)](#)