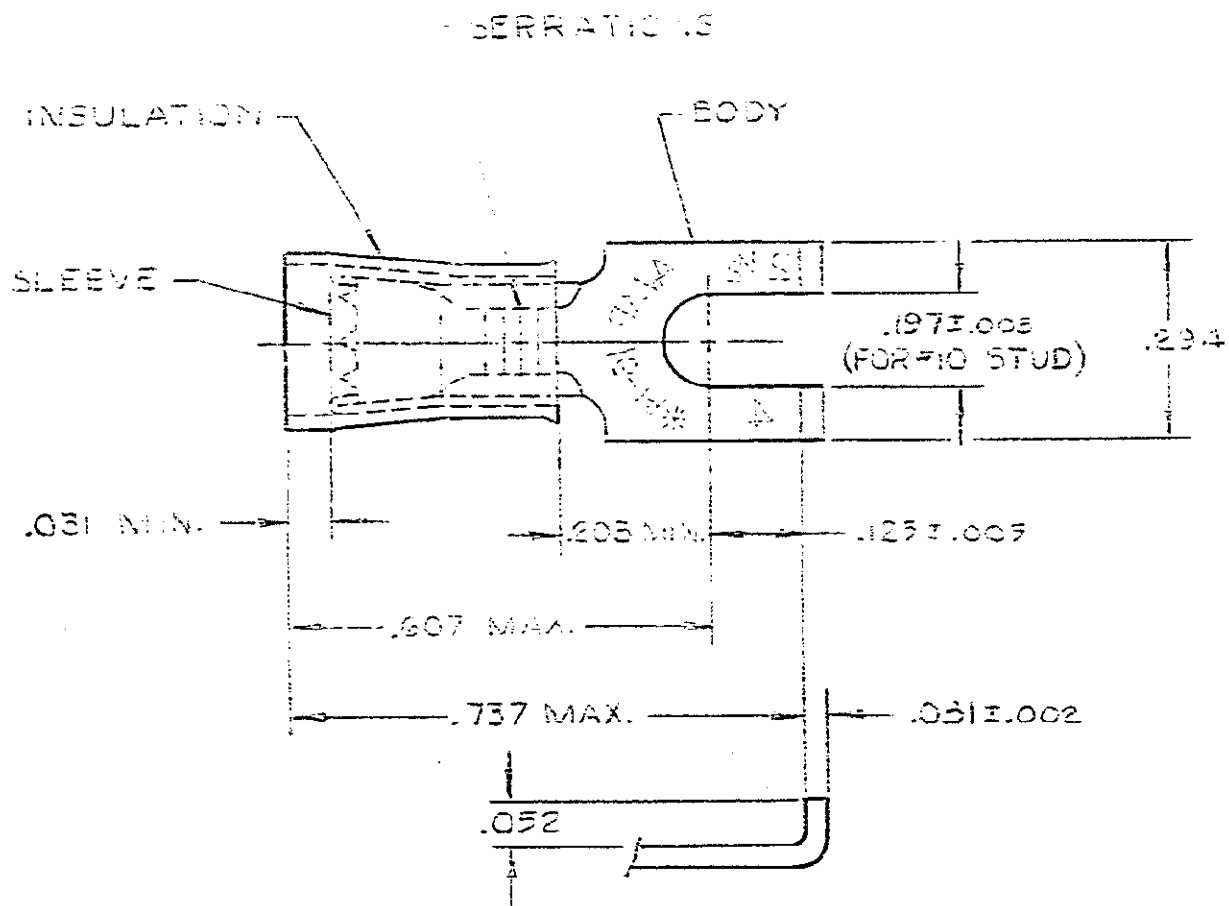


THIS DRAWING IS UNPUBLISHED. RELEASED FOR PUBLICATION  
 © COPYRIGHT

REVISIONS						
P	F	ZONE	LTR	DESCRIPTION	DATE	APPROVED
			J1	REVISED PER ECO-11-005294	13APR11	HMR



1. WIRE INSULATION DIA. - SEE TABLE

2. BODY FINISH: TIN PLATE (MIL-T-10727)  
 .000100 MIN THK

QTY	WIRE INS DIA	QUANTITY	DESCRIPTION	PART NO
100	.115 - .170	100	LOOSE PC, BOX	8-320863-1
<del>100</del>	<del>.115 - .170</del>	<del>100</del>	<del>ON TAPE, SW. BOX</del>	<del>2-320863-6</del>
<del>100</del>	<del>.115 - .170</del>	<del>100</del>	<del>ON TAPE, LA. BOX</del>	<del>2-320863-5</del>
100	.115 - .170	5000	ON TAPE, REEL	2-320863-2
	.115 - .170	1	LOOSE PIECE	320863

WIRE INS DIA	QUANTITY	DESCRIPTION	PART NO
UNLESS OTHERWISE SPECIFIED DIMENSIONS ARE IN INCHES. TOLERANCES ON: DECIMALS ± .008 ANGLES ±		CONTRACT NO	
MATERIAL INSULATION: NYLON - BLUE BODY & SLEEVE: COPPER (33-C-576)		DR UTA / RFB 9-30-89	
FINISH BODY: 2		CHK <i>Ph...</i>	
		APPD <i>...</i>	
		APPD <i>...</i>	
		DSGN APPD	
		OTHER APPD	
TE Connectivity		NAME WIRE TERMINAL P.I.D.G.-FLANGED SPADE WIRE SIZE: 16-14	
SIZE B	FSCM NO 00779	DRAWING NO 320863	
SCALE NTS		SHEET 1 OF 1	

CUSTOMER DRAWING

单击下面可查看定价，库存，交付和生命周期等信息

[>>TE Connectivity\(泰科\)](#)