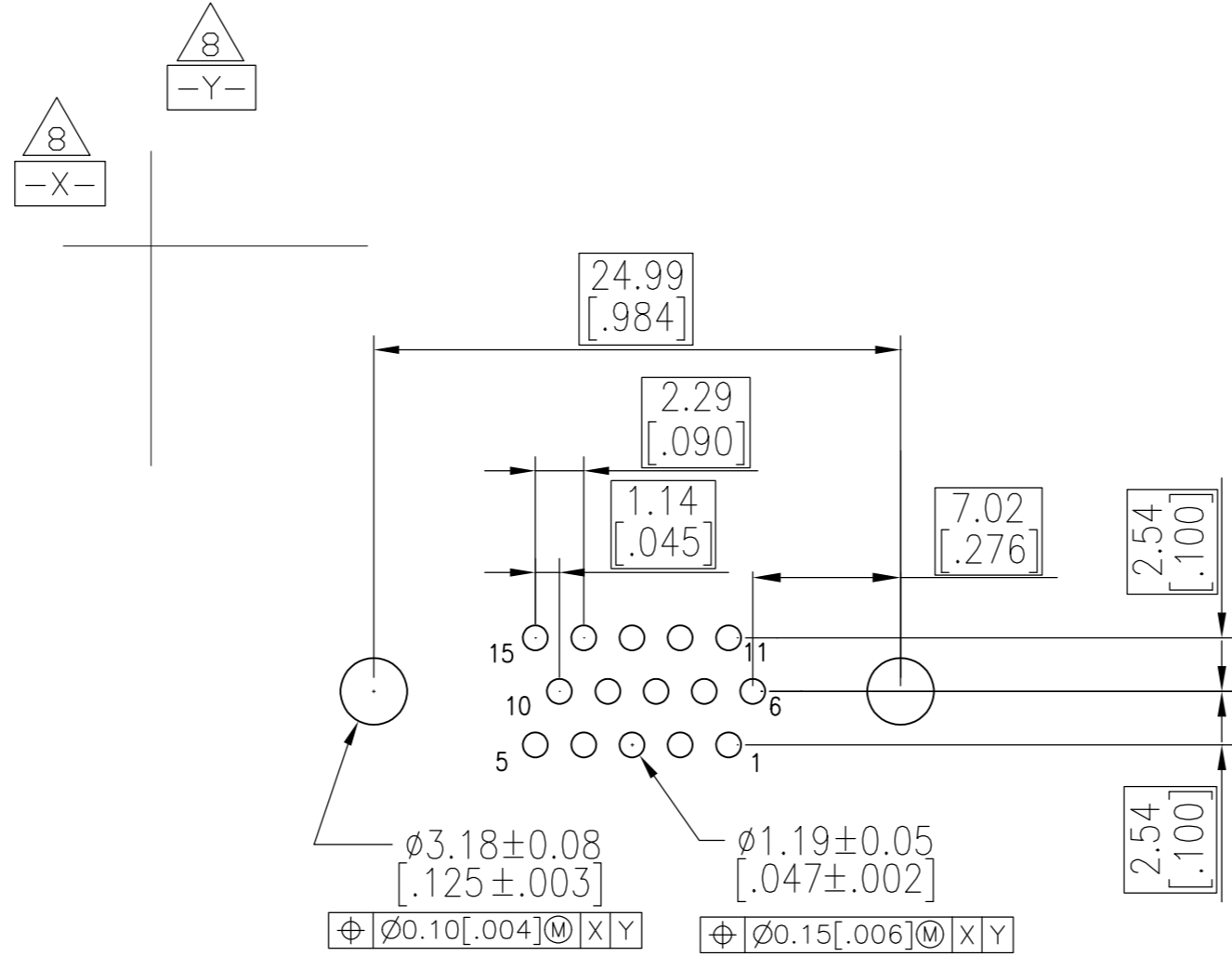
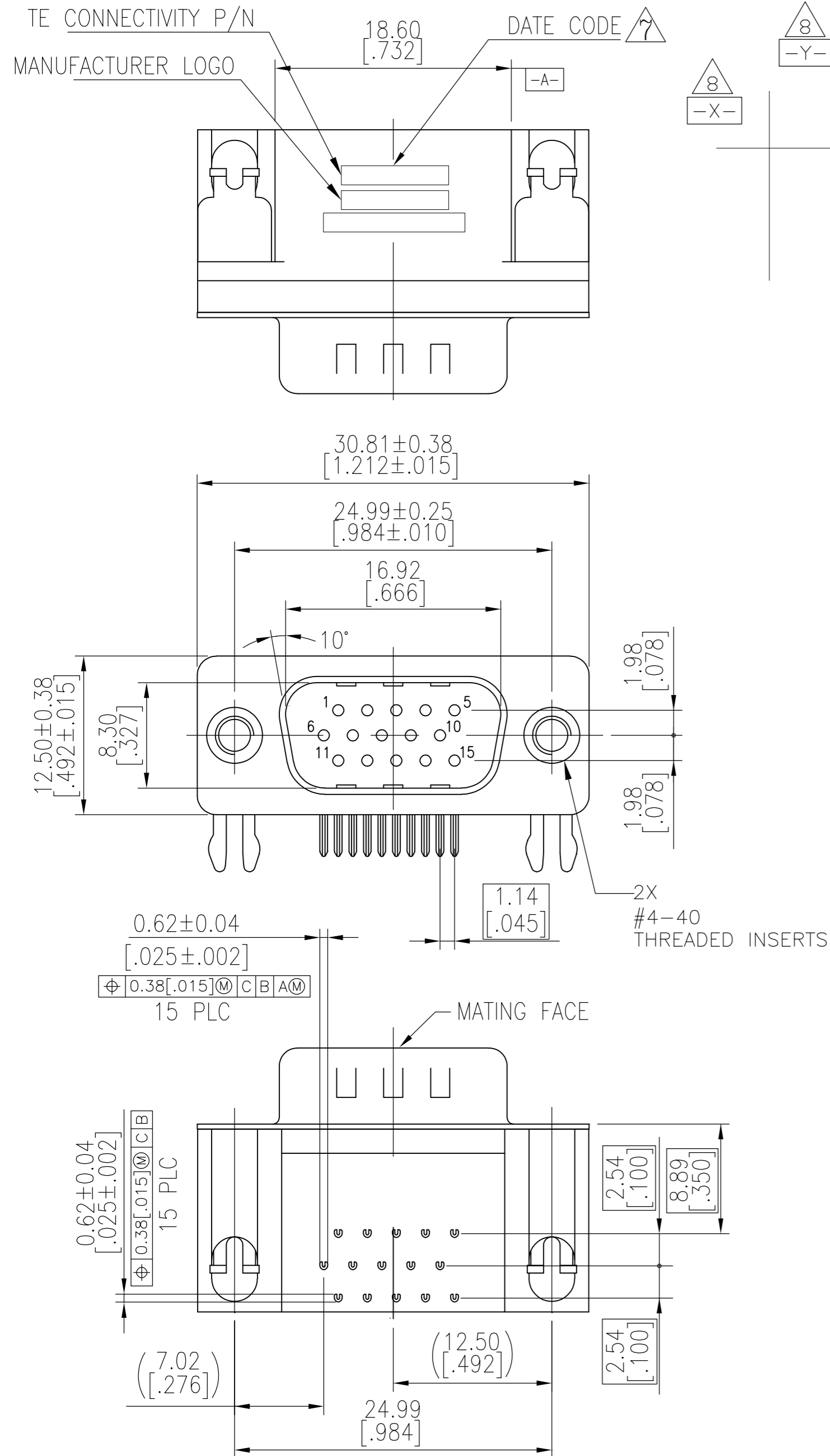
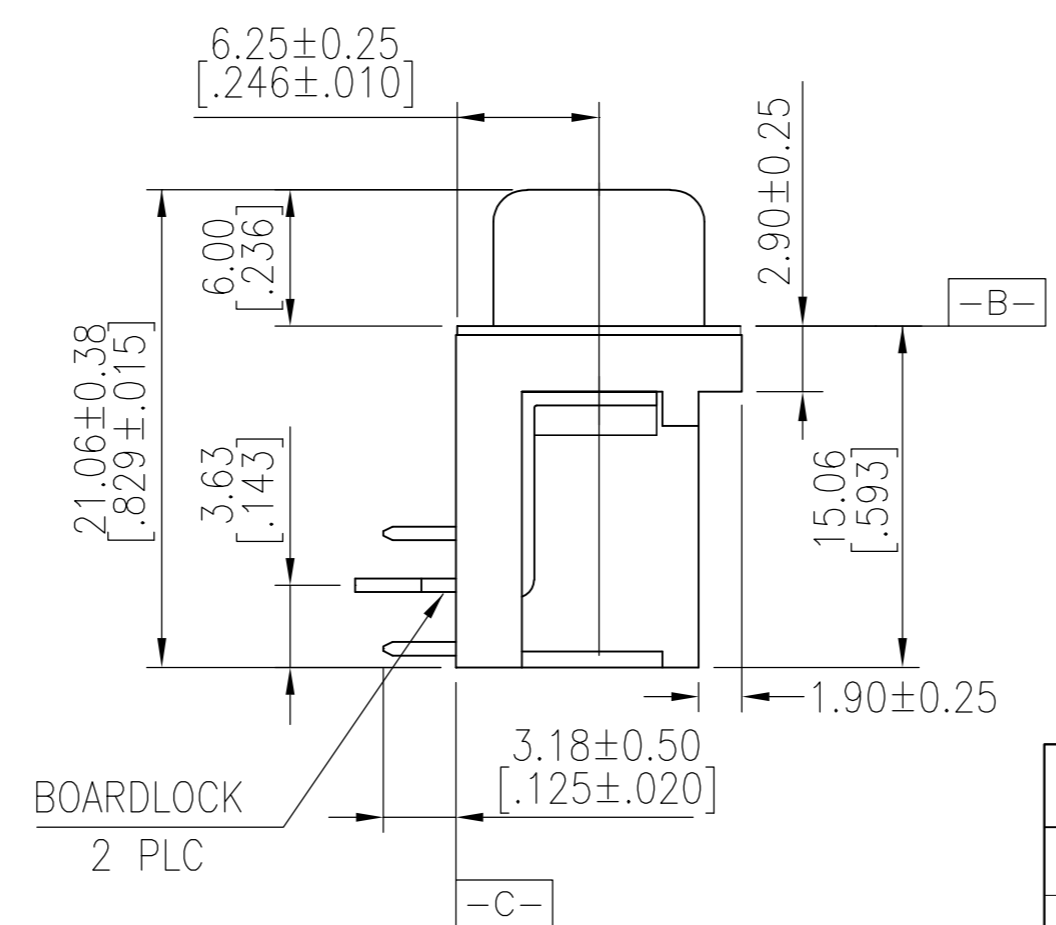


THIS DRAWING IS UNPUBLISHED. RELEASED FOR PUBLICATION
 © COPYRIGHT - By - ALL RIGHTS RESERVED.

REVISIONS					
P	LTR	DESCRIPTION	DATE	DWN	APVD
E		REVISED PER ECO-15-011151	24JUN2016	AP	DG



RECOMMENDED PCB LAYOUT



1. HOUSING MATERIAL: PBT, GLASS FILLED, BLACK, UL 94V-0 RATED.
 2. CONTACT MATERIAL: BRASS.
 3. CONTACT FINISH: GOLD PLATE IN MATING AREA (SEE TABLE), 120 μ " MIN TIN PLATE ON SOLDER TAIL, BOTH OVER 50 μ " MIN NICKEL UNDERPLATE.
 4. SHELL: STEEL, NICKEL PLATE.
 5. BOARDLOCK: BRASS, 100 μ " MIN TIN PLATE.
 6. THREADED INSERTS: BRASS, NICKEL PLATE.
- $\triangle 7$ FOUR DIGIT DATE CODE IN THIS FORMAT.
 Year 01 45 Manufacturing Week
- $\triangle 8$ DATUMS \square -X- & \square -Y- TO BE ESTABLISHED BY CUSTOMER.

OBSOLETE	Gold Flash	5749767-3
OBSOLETE	15 μ " MIN	5749767-2
	30 μ " MIN	5749767-1
	CONTACT MATING AREA FINISH	PART NUMBER

THIS DRAWING IS A CONTROLLED DOCUMENT.		DWN J.GERACE 22FEB06	TE Connectivity	
DIMENSIONS: mm [INCHES]		CHK S.BOLASH 22FEB06	NAME	
TOLERANCES UNLESS OTHERWISE SPECIFIED:		APVD M.WALMSLEY 22FEB06	AMPLIMITE HD-22	
0 PLC \pm -	1 PLC \pm 0.38 [.015]	PRODUCT SPEC	15 POS PLUG, RIGHT ANGLE	
2 PLC \pm 0.25 [.010]	3 PLC \pm 0.15 [.006]	APPLICATION SPEC	SIZE	CAGE CODE
4 PLC \pm -	ANGLES \pm 2'	114-13198	A2	00779
MATERIAL	FINISH	WEIGHT 0	DRAWING NO	RESTRICTED TO
SEE NOTES	SEE NOTES	C=5749767	SCALE 3:1	SHEET 1 OF 1
CUSTOMER DRAWING		REV E		

5749767

单击下面可查看定价，库存，交付和生命周期等信息

[>>TE Connectivity\(泰科\)](#)