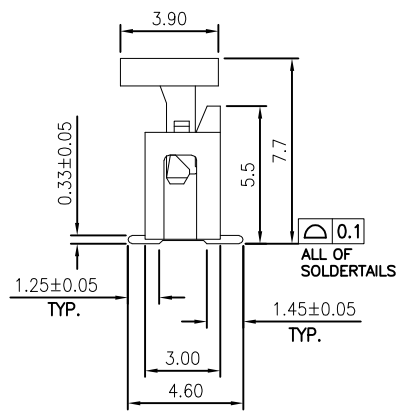
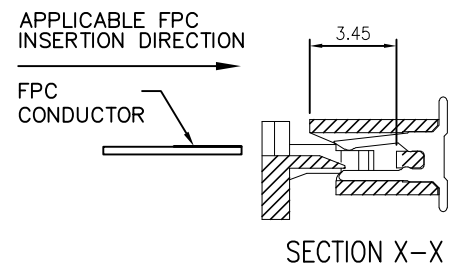
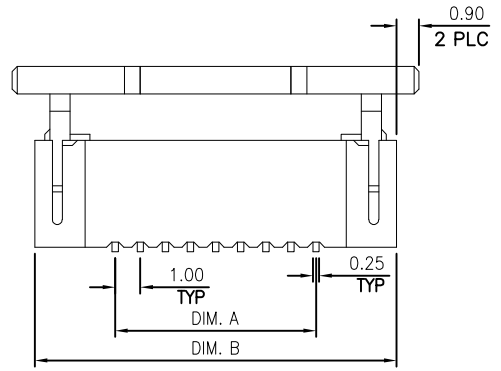
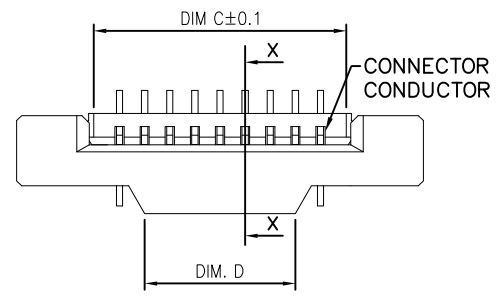
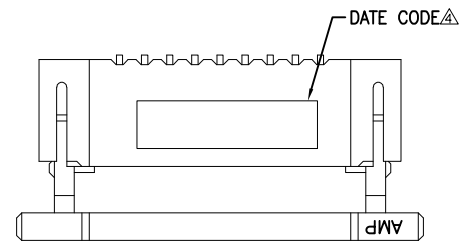
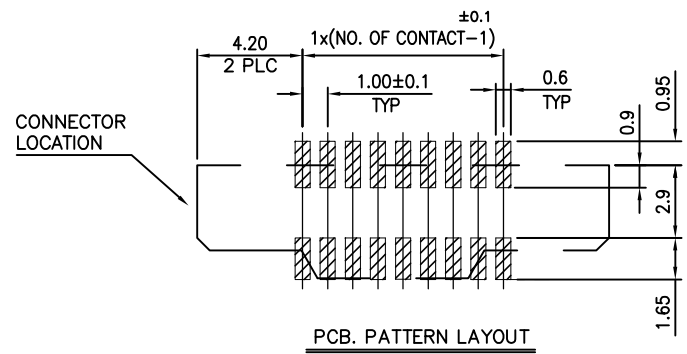
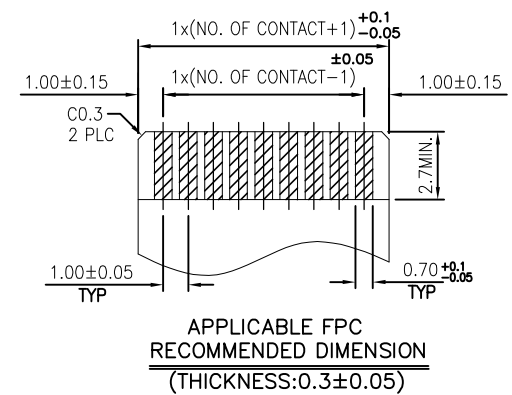


THIS DRAWING IS UNPUBLISHED. RELEASED FOR PUBLICATION
 © COPYRIGHT BY TYCO ELECTRONICS CORPORATION. ALL RIGHTS RESERVED.

LOC		DIST		REVISIONS			
P	LTR	DESCRIPTION		DATE	DWN	APVD	
DW	-	B		REVISED (ECR-17-004265)	24MAR17	HX WK	



- NOTES:
- MATERIAL:
 - HOUSING: THERMOPLASTIC (NYLON 9T) UL94V-0; COLOR: BLACK.
 - ACTUATOR: THERMOPLASTIC (NYLON 9T) UL94V-0; COLOR: BLACK.
 - CONTACTS: PHOSPHOR BRONZE
 - FINISH:
 - CONTACT:
 - 3 μm (120 μ") MATTE-TIN PLATING OVERALL.
 - 1.27 μm (50 μ") MIN. NICKEL UNDERPLATING OVERALL.
 - RECOMMENDED PCB THICKNESS : 1.0mm
 - WITHOUT DATE CODE FOR 8 POSITION UNDER.
 - REFLOW SOLDER CAPABLE TO 260° PER TE SPEC. 109-201, CONDITION B.



37	41.06	45.6	39.0	40	4-1775695-0
36	40.06	44.6	38.0	39	3-1775695-9
35	39.06	43.6	37.0	38	3-1775695-8
34	38.06	42.6	36.0	37	3-1775695-7
33	37.06	41.6	35.0	36	3-1775695-6
32	36.06	40.6	34.0	35	3-1775695-5
31	35.06	39.6	33.0	34	3-1775695-4
30	34.06	38.6	32.0	33	3-1775695-3
29	33.06	37.6	31.0	32	3-1775695-2
28	32.06	36.6	30.0	31	3-1775695-1
27	31.06	35.6	29.0	30	3-1775695-0
26	30.06	34.6	28.0	29	2-1775695-9
25	29.06	33.6	27.0	28	2-1775695-8
24	28.06	32.6	26.0	27	2-1775695-7
23	27.06	31.6	25.0	26	2-1775695-6
22	26.06	30.6	24.0	25	2-1775695-5
21	25.06	29.6	23.0	24	2-1775695-4
20	24.06	28.6	22.0	23	2-1775695-3
19	23.06	27.6	21.0	22	2-1775695-2
18	22.06	26.6	20.0	21	2-1775695-1
17	21.06	25.6	19.0	20	2-1775695-0
16	20.06	24.6	18.0	19	1-1775695-9
15	19.06	23.6	17.0	18	1-1775695-8
14	18.06	22.6	16.0	17	1-1775695-7
13	17.06	21.6	15.0	16	1-1775695-6
12	16.06	20.6	14.0	15	1-1775695-5
11	15.06	19.6	13.0	14	1-1775695-4
10	14.06	18.6	12.0	13	1-1775695-3
9	13.06	17.6	11.0	12	1-1775695-2
8	12.06	16.6	10.0	11	1-1775695-1
7	11.06	15.6	9.0	10	1-1775695-0
6	10.06	14.6	8.0	9	1775695-9
5	9.06	13.6	7.0	8	1775695-8
4	8.06	12.6	6.0	7	1775695-7
3	7.06	11.6	5.0	6	1775695-6
2	6.06	10.6	4.0	5	1775695-5
2	5.06	9.6	3.0	4	1775695-4
2	4.06	8.6	2.0	3	1775695-3
DIM D	DIM C	DIM B	DIM A	PDS.	PART NUMBER

THIS DRAWING IS A CONTROLLED DOCUMENT.

DWN H. HUANG 28SEP2007
 CHK S. HOU 28SEP2007
 APVD W.J. KE 28SEP2007

TE Connectivity

1.0MM FPC, ZIF, VERTICAL, SMT TYPE

108-57080
 QUALIFICATION TEST REPORT
 501-57098

SIZE A3 CAGE CODE 00779 C=1775695 DRAWING NO 1775695-3 RESTRICTED TO -

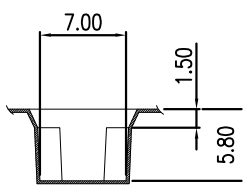
MATERIAL SEE NOTE FINISH SEE NOTE WEIGHT -

CUSTOMER DRAWING SCALE - SHEET 1 OF 2 REV B

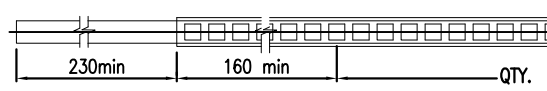
THIS DRAWING IS UNPUBLISHED. RELEASED FOR PUBLICATION
 © COPYRIGHT BY TYCO ELECTRONICS CORPORATION. ALL RIGHTS RESERVED.

LOC	DIST	REVISIONS					
		P	LTR	DESCRIPTION	DATE	DWN	APVD
DW	-			SEE SHEET 1.			

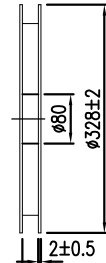
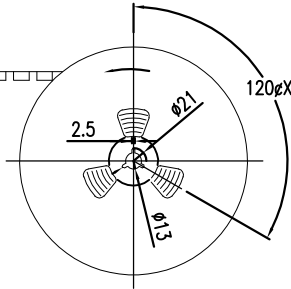
- NOTES:
- MATERIAL :
 - EMBOSSED CARRIER: PS
 - COVER TAPE: PS
 - SHIPPING CARTON: CORRUGATED FIBER
 - DIMENSION :
 - REEL: W=DIM C
 - SHIPPING BOX: L=350, W=350, H=350
 - QUANTITY : PRIMARY PACKING: 1000 PCS/REEL
 - PEELING RESISTANCE: 10.2gf~71.4gf.
 - PEELING SPEED: 300mm/minutes.



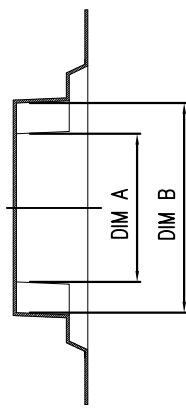
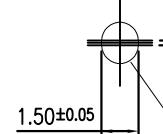
K-K' SECTION



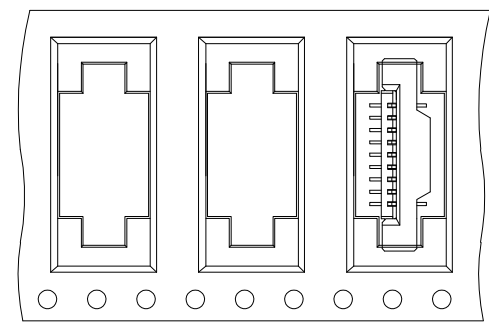
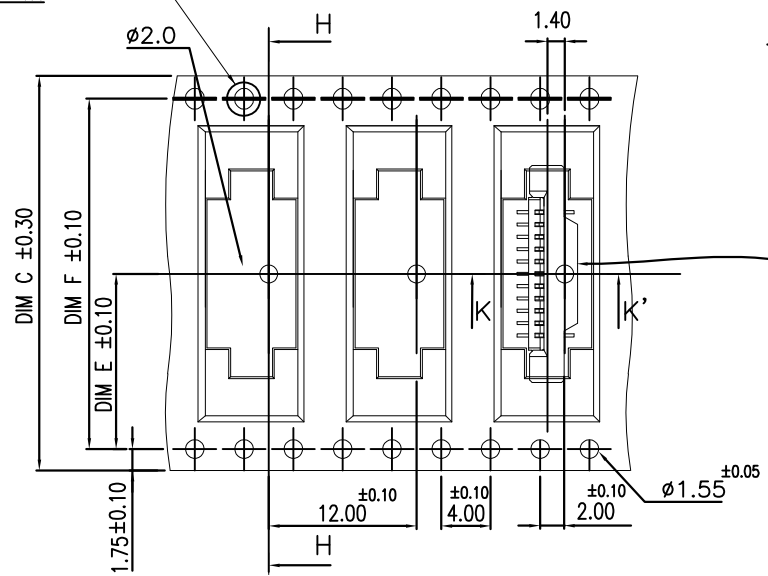
PULL OUT DIRECTION



SCALE 4:1



H-H' SECTION



FOR 3 TO 10 POS.

USER DIRECTION OF UNREELING

REELS/BOX	DIM F	DIM E	DIM D	DIM C	DIM B	DIM A	G/W (kg)	N/W (kg)	POS.	PART NUMBER
4	68.4	34.2	72.4	70	46	41	8.70	5.50	40	4-1775695-0
					45	40	8.57	5.37	39	3-1775695-9
					44	39	8.45	5.25	38	3-1775695-8
					43	38	11.60	7.68	37	3-1775695-7
					42	37	11.40	7.48	36	3-1775695-6
					41	36	11.21	7.29	35	3-1775695-5
					40	35	11.02	7.10	34	3-1775695-4
					39	34	10.83	6.91	33	3-1775695-3
					38	33	10.63	6.71	32	3-1775695-2
					37	32	10.44	6.52	31	3-1775695-1
					36	31	10.25	6.33	30	3-1775695-0
					35	30	10.06	6.14	29	2-1775695-9
					34	29	9.86	5.94	28	2-1775695-8
					33	28	9.67	5.75	27	2-1775695-7
					32	27	9.00	5.56	26	2-1775695-6
					31	26	8.80	5.36	25	2-1775695-5
					30	25	8.61	5.17	24	2-1775695-4
					29	24	8.42	4.98	23	2-1775695-3
					28	23	8.23	4.79	22	2-1775695-2
					27	22	8.03	4.59	21	2-1775695-1
					26	21	7.84	4.40	20	2-1775695-0
					25	20	7.65	4.21	19	1-1775695-9
					24	19	7.46	4.02	18	1-1775695-8
					23	18	7.26	3.82	17	1-1775695-7
					22	17	7.07	3.63	16	1-1775695-6
					21	16	9.20	5.16	15	1-1775695-5
					20	15	8.91	4.87	14	1-1775695-4
					19	14	8.62	4.58	13	1-1775695-3
					18	13	8.33	4.29	12	1-1775695-2
					17	12	8.04	4.00	11	1-1775695-1
					16	11	7.73	4.13	10	1-1775695-0
					15	10	7.41	3.81	9	1775695-9
					14	9	7.08	3.48	8	1775695-8
					13	8	6.76	3.16	7	1775695-7
					12	7	6.44	2.84	6	1775695-6
					11	6	6.12	2.52	5	1775695-5
					10	5	5.80	2.20	4	1775695-4
					9	4	5.48	1.88	3	1775695-3

THIS DRAWING IS A CONTROLLED DOCUMENT.		DWN	28SEP2007
		CHK	28SEP2007
		APVD	28SEP2007
		PRODUCT SPEC	
		APPLICATION SPEC	
		WEIGHT	
		CUSTOMER DRAWING	

TE Connectivity

1.0MM FPC, ZIF, VERTICAL, SMT TYPE

SIZE	CAGE CODE	DRAWING NO	RESTRICTED TO
A3	00779	C=1775695	-

SCALE - SHEET 2 OF 2 REV B

单击下面可查看定价，库存，交付和生命周期等信息

[>>TE Connectivity\(泰科\)](#)