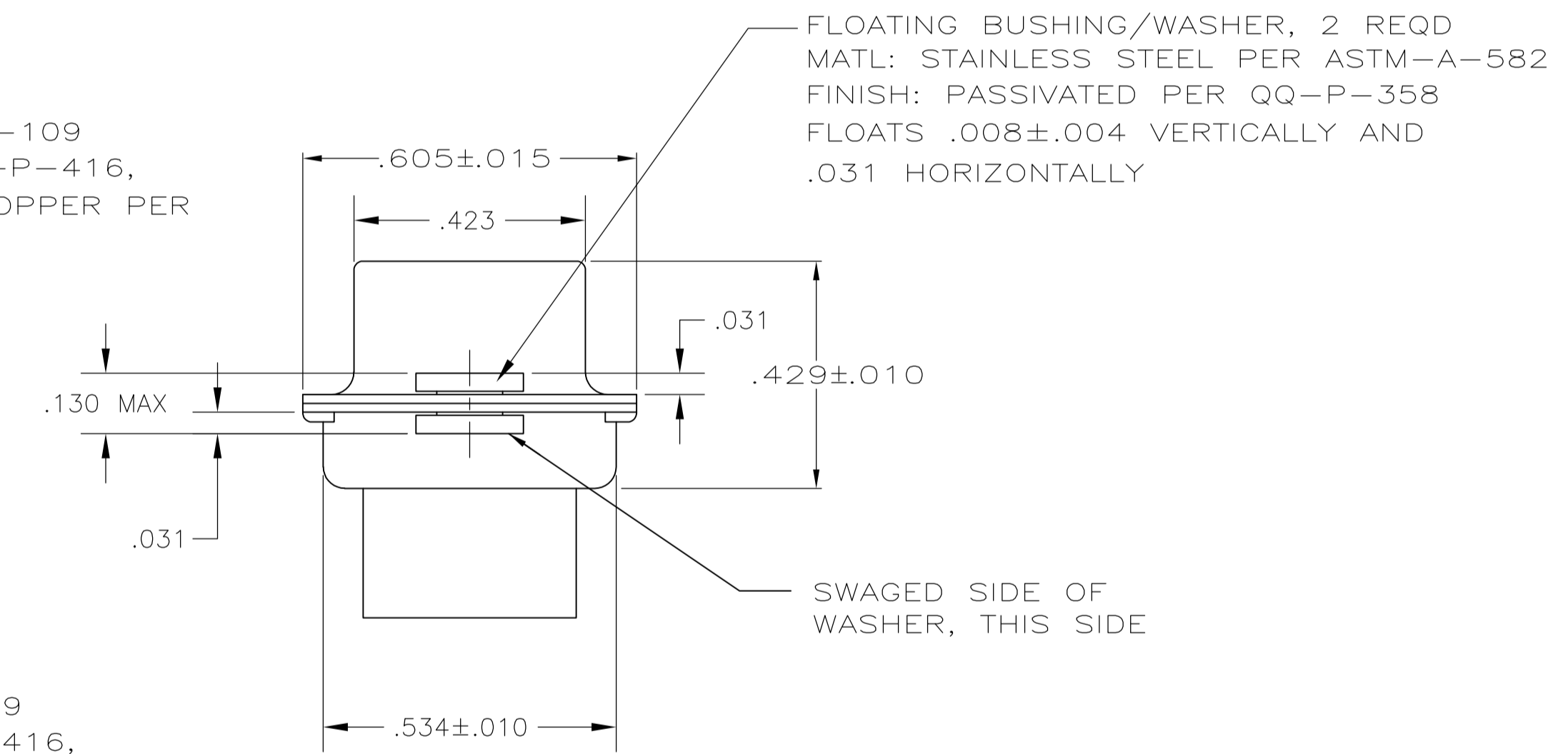
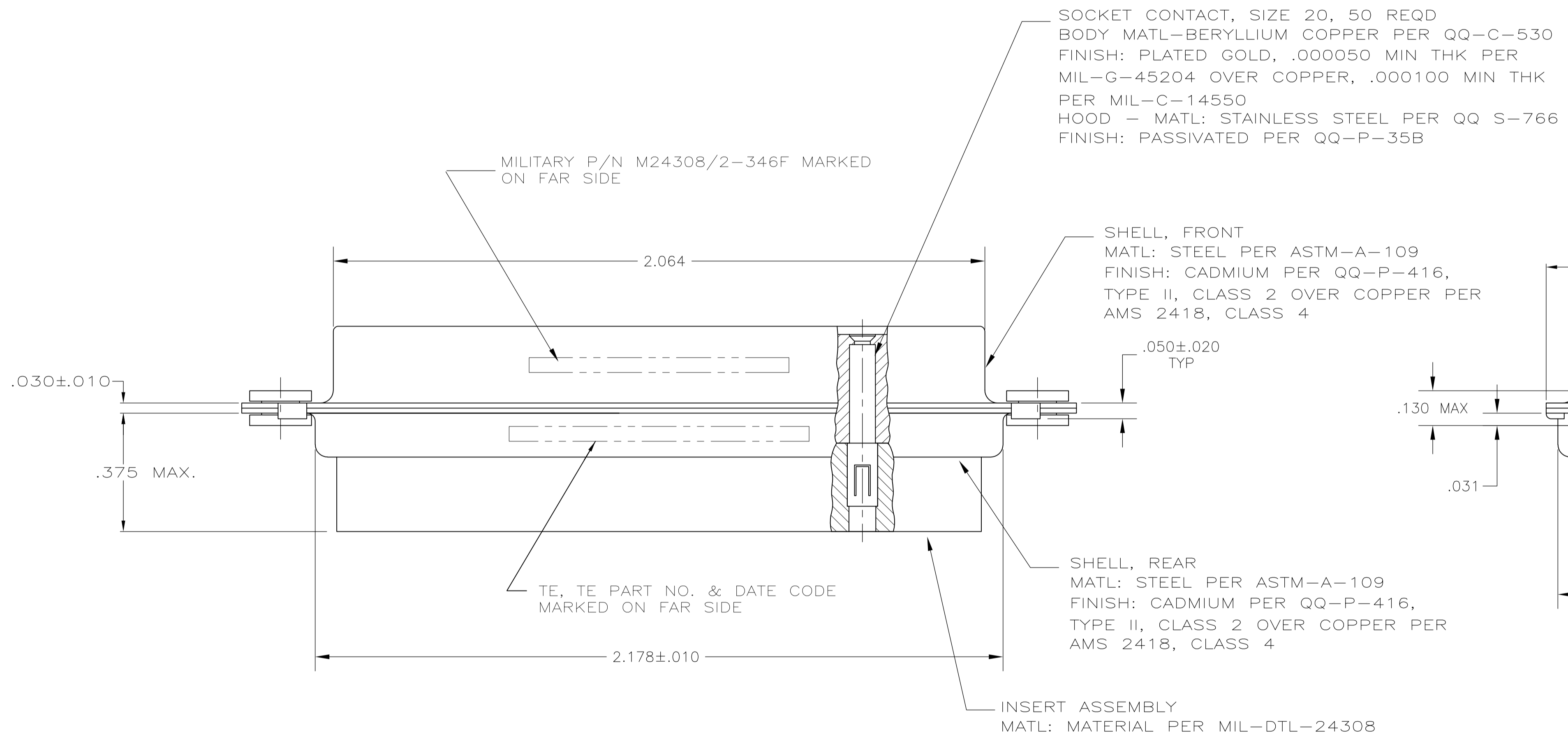
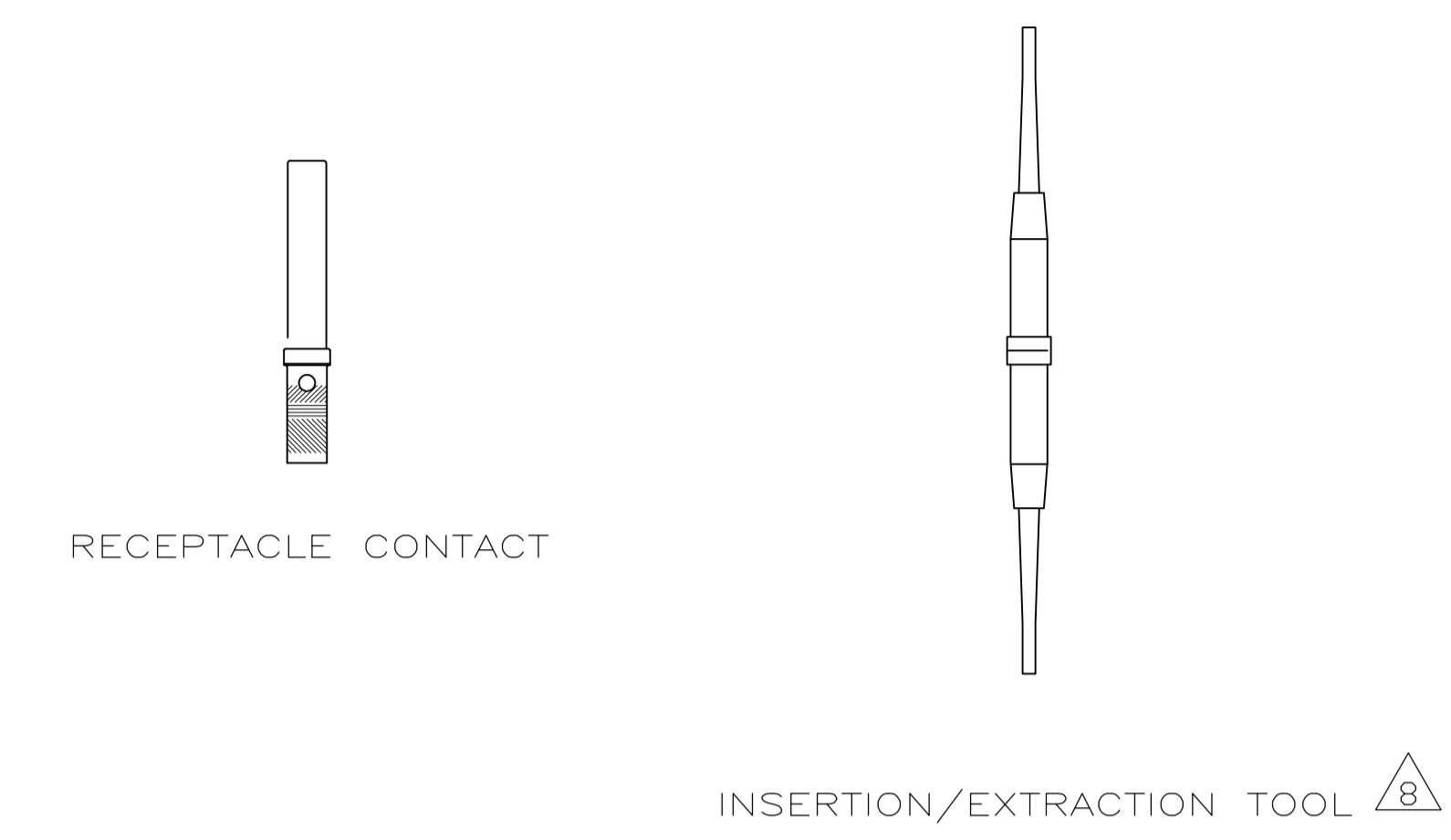
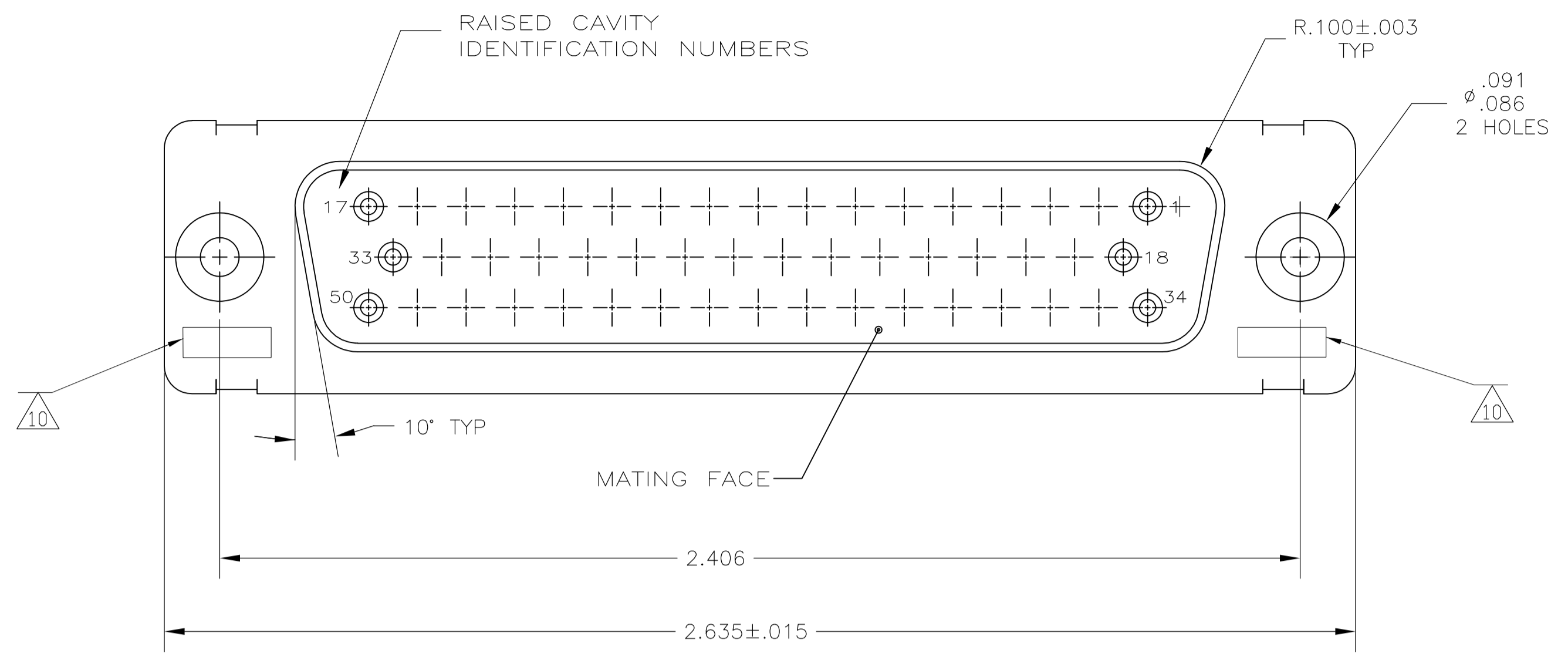


LOC		DIST		REVISIONS			
P	LTR	DESCRIPTION	DATE	DMN	APVD		
F		REVISED PER ECO-15-017709	30DEC15	KG	CD		



- THIS RECEPTACLE WILL MATE WITH ANY 50 POSN, SIZE 5 PLUG IN AMPLIMITE SERIES
- MAXIMUM WIRE INSULATION TO BE USED WITH THIS RECEPTACLE IS .068 DIA
- SST RETENTION CLIPS ARE INCLUDED IN INSERTS
- PACKAGE STAMPED M24308/2-486F & TE PART NUMBER 211529-1
- PACKAGE STAMPED M24308/2-346F & TE PART NUMBER 211529-2
- PACKAGE STAMPED M24308/2-357F & TE PART NUMBER 211529-3
- TE P/N 205090-1, MIL P/N 63-368, INCLUDED IN KIT
- TE P/N 91067-2, MIL P/N M81969/1-02
- CONNECTOR SUPPLIED WITHOUT CONTACTS, SHOWN FOR ILLUSTRATION ONLY
- UL/CSA DESIGNATION STAMPED IN THIS AREA.
- FOR CONNECTOR ASSEMBLIES, TE CONTACT PART NOS. 205090-1 MUST BE ORDERED SEPARATELY. CONNECTORS WITH CONTACTS ARE SUPPLIED WITH CONTACT 205090-1

DESCRIPTION	PART NO.
SAME AS -1 EXCEPT $\triangle 6 \triangle 7 \triangle 8 \triangle 11$	211529-3
SAME AS -1 EXCEPT $\triangle 5 \triangle 7 \triangle 11$	211529-2
AS SHOWN $\triangle 4 \triangle 9 \triangle 11$	211529-1

THIS DRAWING IS A CONTROLLED DOCUMENT.

DIMENSIONS: INCHES	TOLERANCES UNLESS OTHERWISE SPECIFIED:	0. PLC ± -	1. PLC ± -	2. PLC ± -	3. PLC ± .005	4. PLC ± -	ANGLES ± -
--------------------	--	------------	------------	------------	---------------	------------	------------

MATERIAL	FINISH	WEIGHT	SIZE	CAGE CODE	DRAWING NO.	RESTRICTED TO
-	-	-	A1	00779	211529	-

CUSTOMER DRAWING SCALE 4:1 SHEET 1 OF 1 REV F

单击下面可查看定价，库存，交付和生命周期等信息

[>>TE Connectivity\(泰科\)](#)