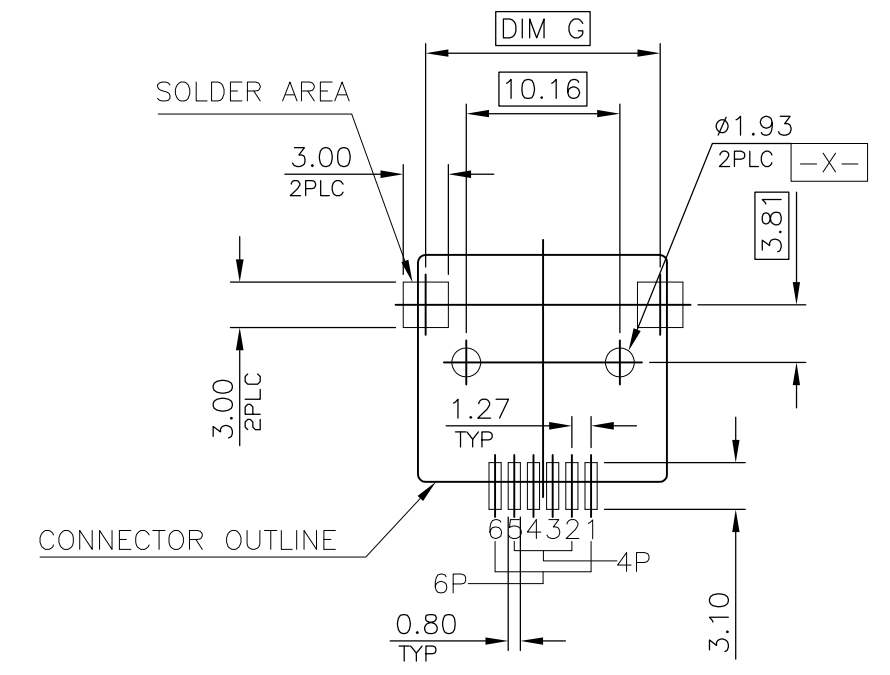
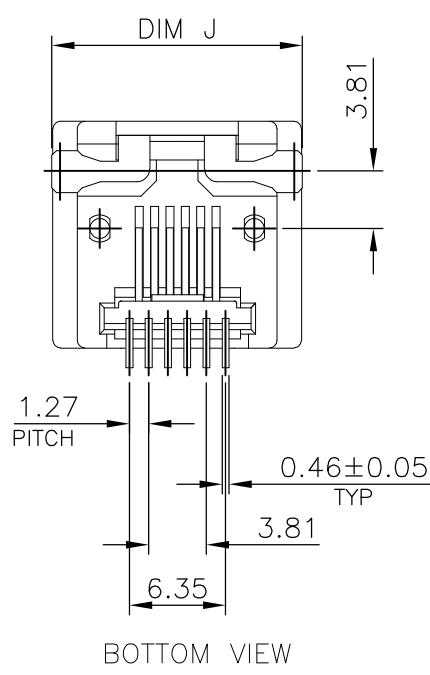
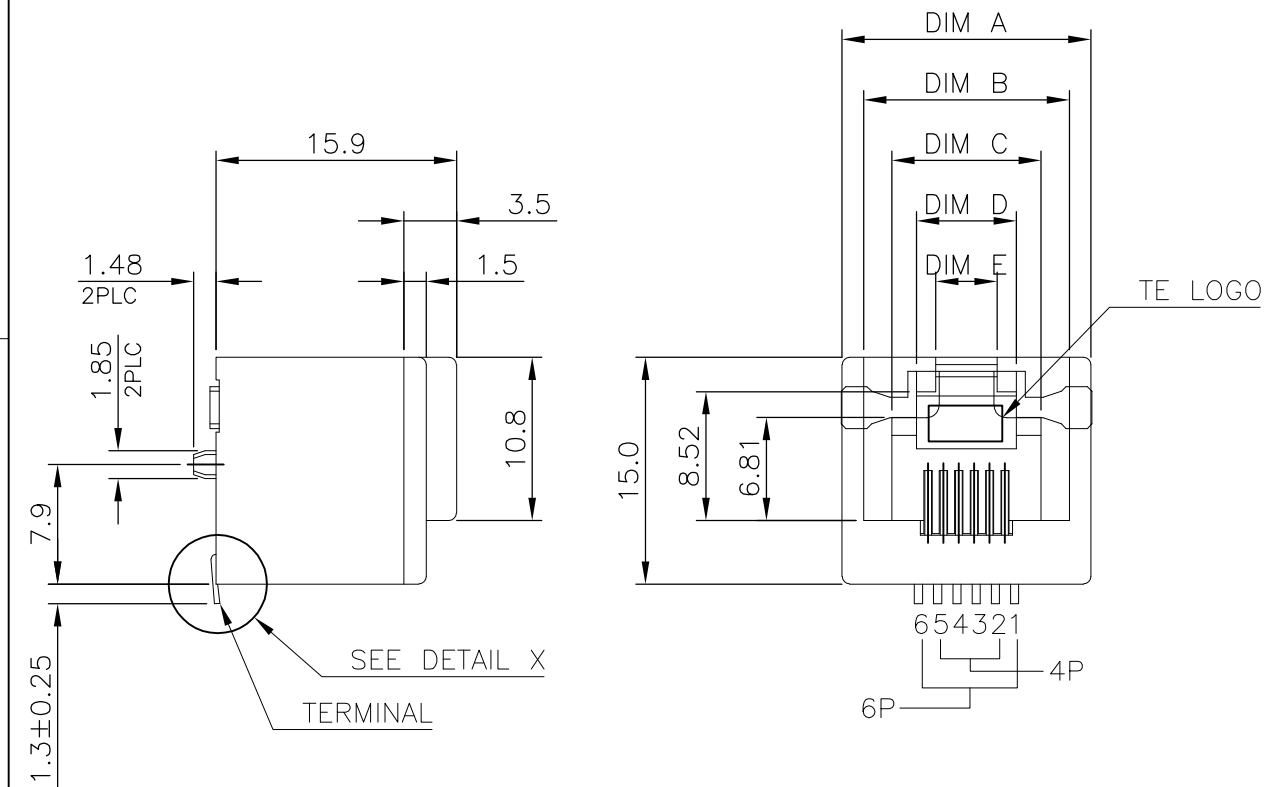
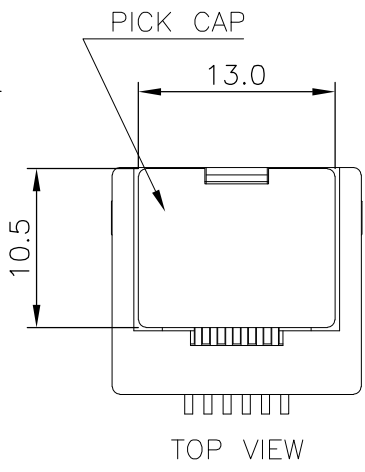
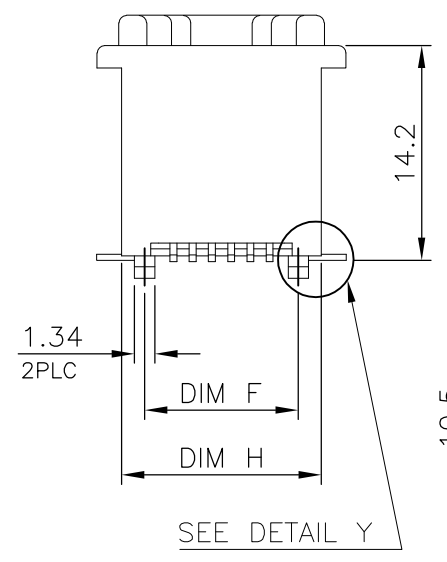
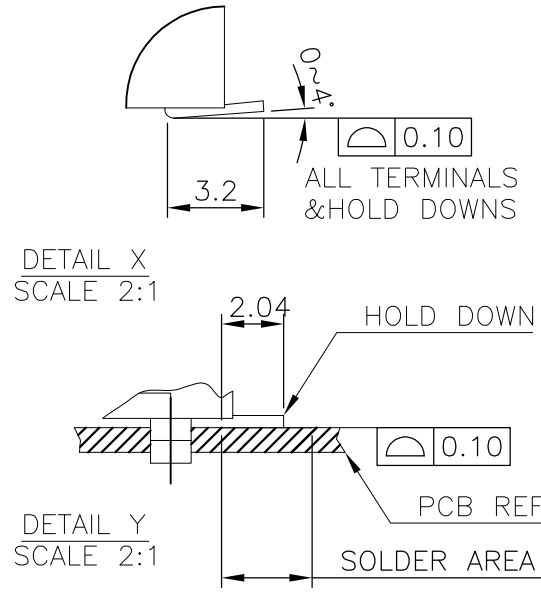


THIS DRAWING IS UNPUBLISHED. RELEASED FOR PUBLICATION
 © COPYRIGHT - TE Connectivity ALL RIGHTS RESERVED.

| REVISIONS | | | | | |
|-----------|-----|---------------|-----------|-----|------|
| P | LTR | DESCRIPTION | DATE | DWN | APVD |
| B | | ECO-17-008182 | 01JUN2017 | LL | SH |



RECOMMENDED PCB LAYOUT
 RECOMMENDED PCB THICKNESS: 1.6mm.
 TOLERANCE: ±0.05 (TOP VIEW)



- NOTE:
- MATERIAL:
 - HOUSING: PA9T, WITH 30% GF, UL94 V-0, BLACK COLOR.
 - INSERT HOUSING: PA9T, WITH 30% GF, UL94 V-0, BLACK COLOR.
 - PICK CAP: PA46, WITH 30% GF, UL94 V-0, BLACK COLOR.
 - CONTACTS: PHOSPHOR BRONZE.
 - HOLD DOWN: BRASS.
 - FINISH:
 - CONTACTS: (SEE TABLE) GOLD PLATED ON CONTACT AREA, GOLD FLASH ON SOLDER TAIL, 1.27um [50u"] MIN. NICKEL UNDERPLATED OVERALL.
 - HOLD DOWN: 2.54um [100u"] MIN. MATTE TIN PLATED.
 - REFLOW SOLDER CAPABLE TO 260°C PER TEC-109-201, CONDITION B.
 - OBsolete PARTS: OBSOLETE CIS STREAMLINING PER D.RENAUD/D.SINISI

| WITH | DIM J | DIM H | DIM G | DIM F | DIM E | DIM D | DIM C | DIM B | DIM A | RJ11 | PICK CAP | MIN.GOLD THICKNESS | PART NUMBER |
|------|-------|-------|-------|-------|-------|-------|-------|-------|-------|------|----------|--------------------|-------------|
| | | | | | | | | | | | | | |
| 6P6C | 16.50 | 13.10 | 15.50 | 10.16 | 4.06 | 6.60 | 9.87 | 13.60 | 16.46 | 6P6C | | | 1-1734858-8 |
| | | | | | | | | | | | | | 1-1734858-7 |
| | | | | | | | | | | | | | 1-1734858-6 |
| | | | | | | | | | | | | | 1-1734858-5 |
| 4P4C | 14.50 | 11.10 | 13.50 | 7.62 | 3.05 | 5.50 | 7.87 | 11.60 | 14.44 | 4P4C | WITHOUT | | 1-1734858-4 |
| | | | | | | | | | | | | | 1-1734858-3 |
| | | | | | | | | | | | | | 1-1734858-2 |
| | | | | | | | | | | | | | 1-1734858-1 |

THIS DRAWING IS A CONTROLLED DOCUMENT.

DWN O. HU 06NOV2007
 CHK S. HOU 06NOV2007
 APVD W. KODAMA 06NOV2007

PRODUCT SPEC 108-57464
 APPLICATION SPEC

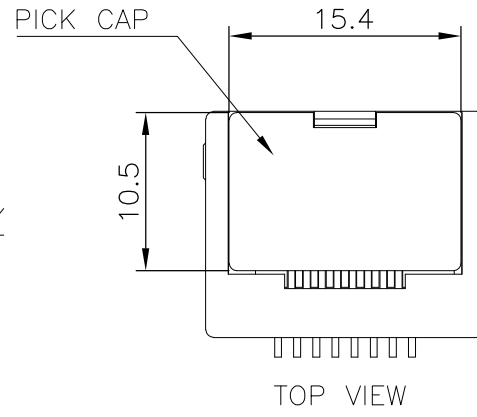
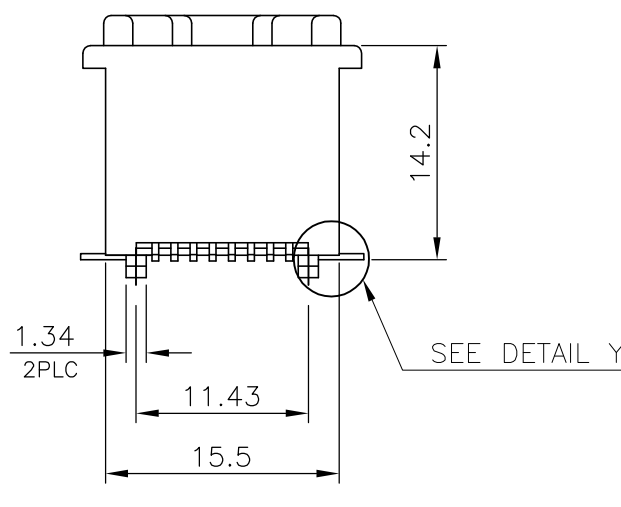
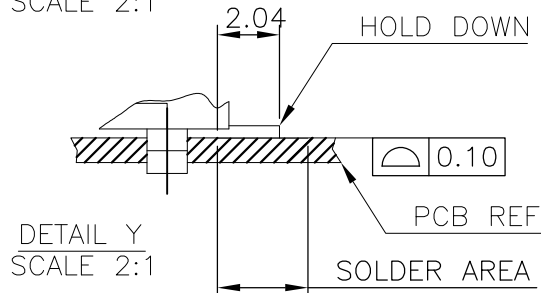
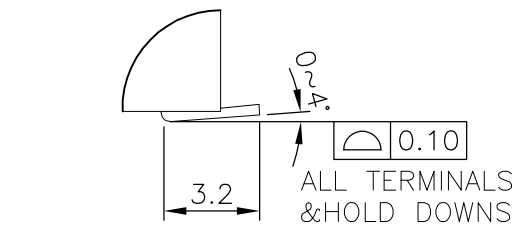
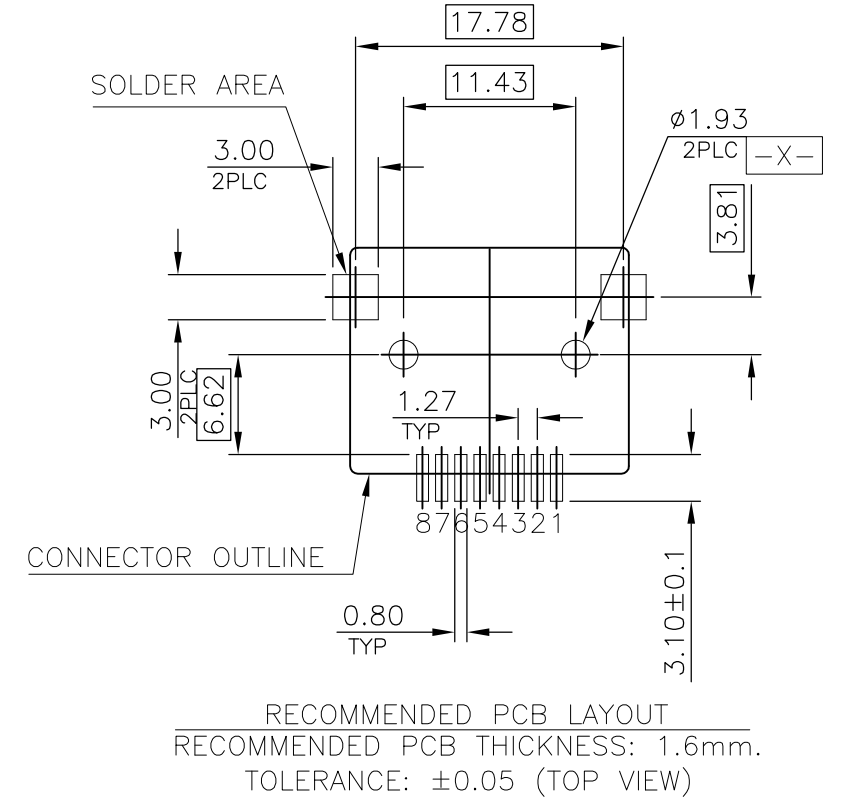
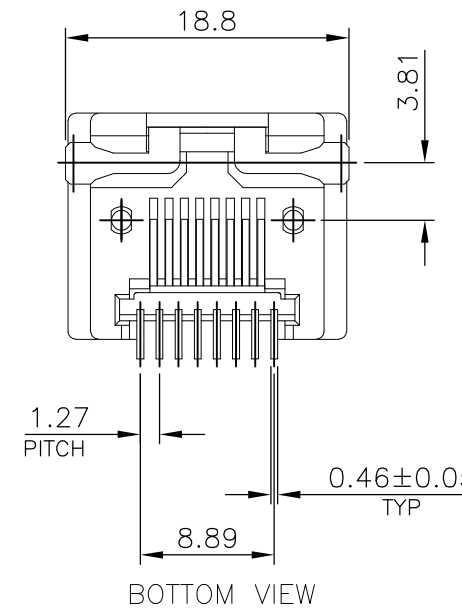
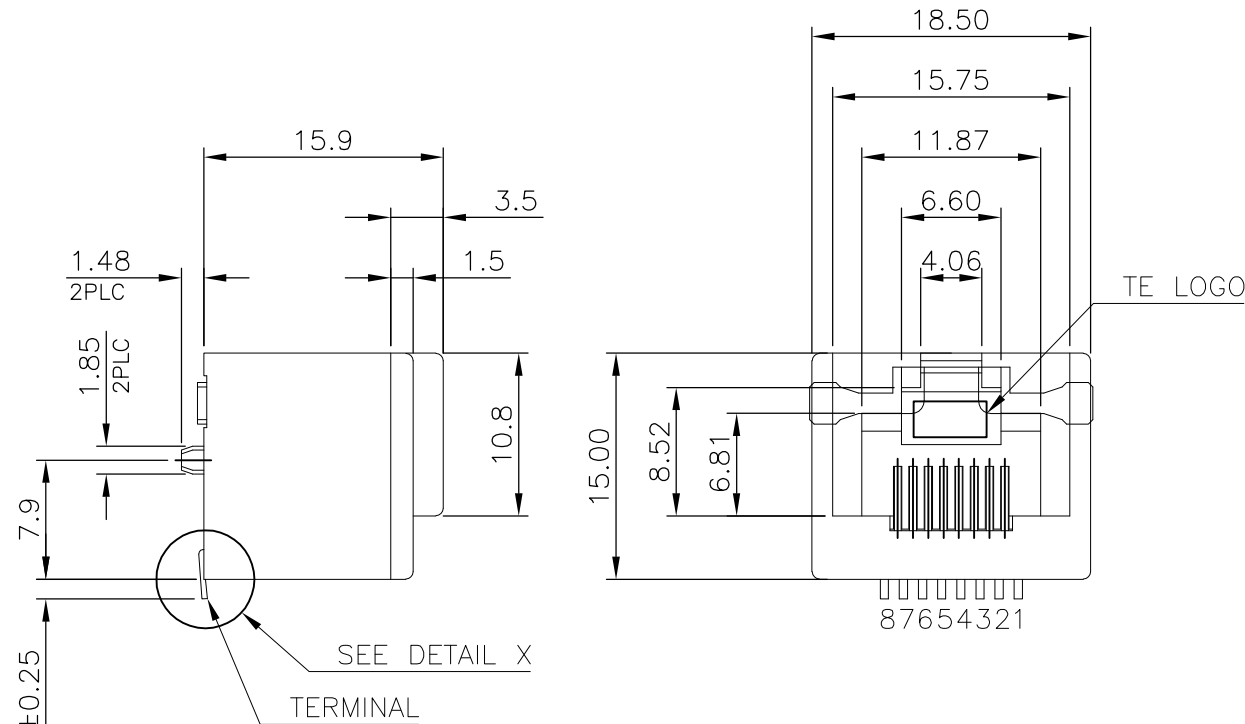
NAME: MODULAR JACK RJ45/RJ11 TOP ENTRY, SMT TYPE

SIZE: A3 CAGE CODE: 00779 DRAWING NO: C-1734858 RESTRICTED TO: -

WEIGHT: 3.3

CUSTOMER DRAWING SCALE: 1:1 SHEET: 1 OF 3 REV: B

| P | LTR | DESCRIPTION | DATE | DWN | APVD |
|---|-----|-------------|------|-----|------|
| - | - | SEE SHEET 1 | - | - | - |



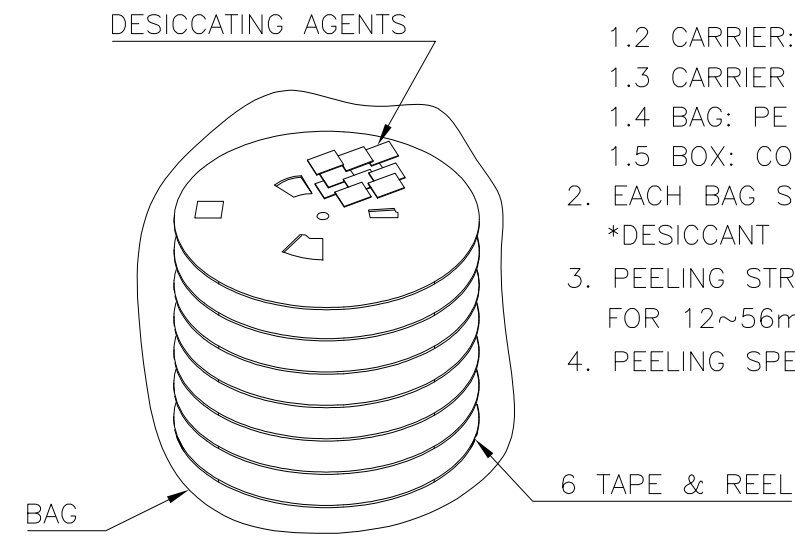
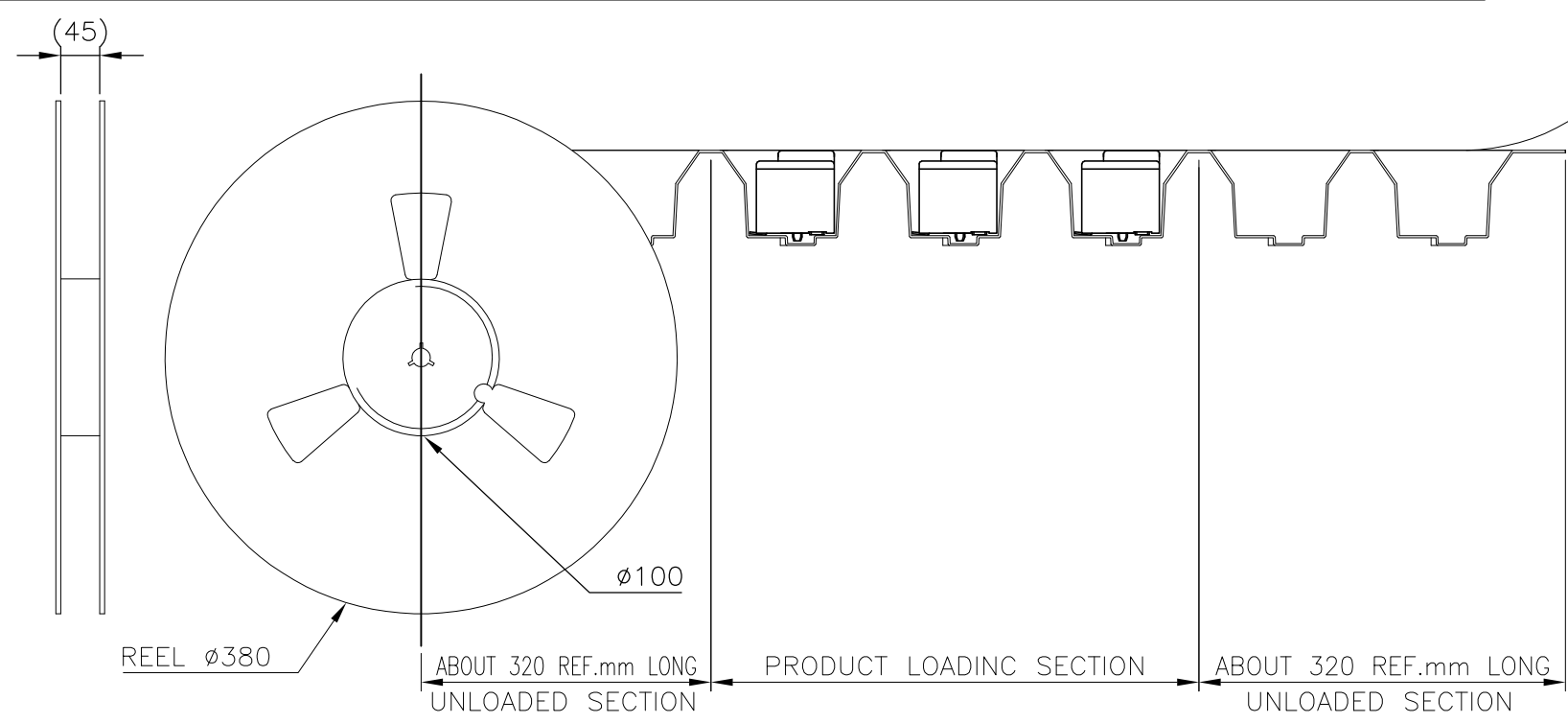
- NOTE:
- MATERIAL:
 - 1.1 HOUSING: PA9T, WITH 30% GF, UL94 V-0, BLACK COLOR.
 - 1.2 INSERT HOUSING: PA9T, WITH 30% GF, UL94 V-0, BLACK COLOR.
 - 1.3 PICK CAP: PA46, WITH 30% GF, UL94 V-0, BLACK COLOR.
 - 1.4 CONTACTS: PHOSPHOR BRONZE.
 - 1.5 HOLD DOWN: BRASS.
 - FINISH:
 - 2.1 CONTACTS: (SEE TABLE) GOLD PLATED ON CONTACT AREA, GOLD FLASH ON SOLDER TAIL, 1.27um [50u"] MIN. NICKEL UNDERPLATED OVERALL.
 - 2.2 HOLD DOWN: 2.54um [100u"] MIN. MATTE TIN PLATED.
 - REFLOW SOLDER CAPABLE TO 260°C PER TEC-109-201, CONDITION B.
 - ⚠️ OBSOLETE PARTS: OBSOLETE CIS STREAMLINING PER D.RENAUD/D.SINISI

| ⚠️ OBSOLETE | 8P8C | WITH | 1.27µm [50µ"] | 2-1734858-8 |
|-------------|------|----------|--------------------|-------------|
| | | | 0.76µm [30µ"] | 2-1734858-7 |
| | | | 0.38µm [15µ"] | 2-1734858-6 |
| | | | 0.15µm [6µ"] | 2-1734858-5 |
| | | | 1.27µm [50µ"] | 2-1734858-4 |
| | | | 0.76µm [30µ"] | 2-1334858-3 |
| ⚠️ OBSOLETE | 8P8C | WITHOUT | 0.38µm [15µ"] | 2-1734858-2 |
| | | | 0.15µm [6µ"] | 2-1734858-1 |
| | RJ45 | PICK CAP | MIN.GOLD THICKNESS | PART NUMBER |

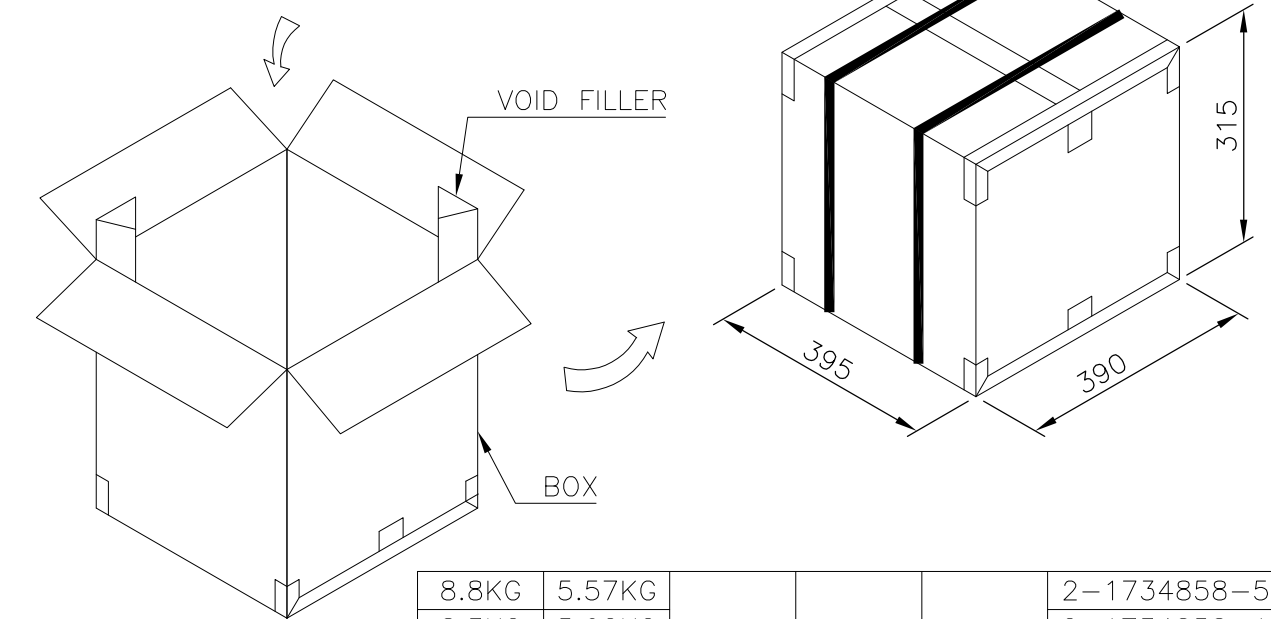
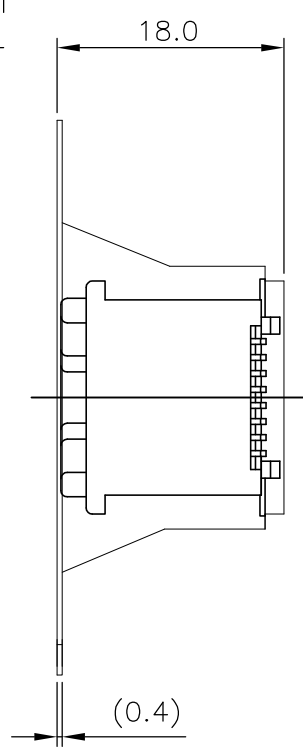
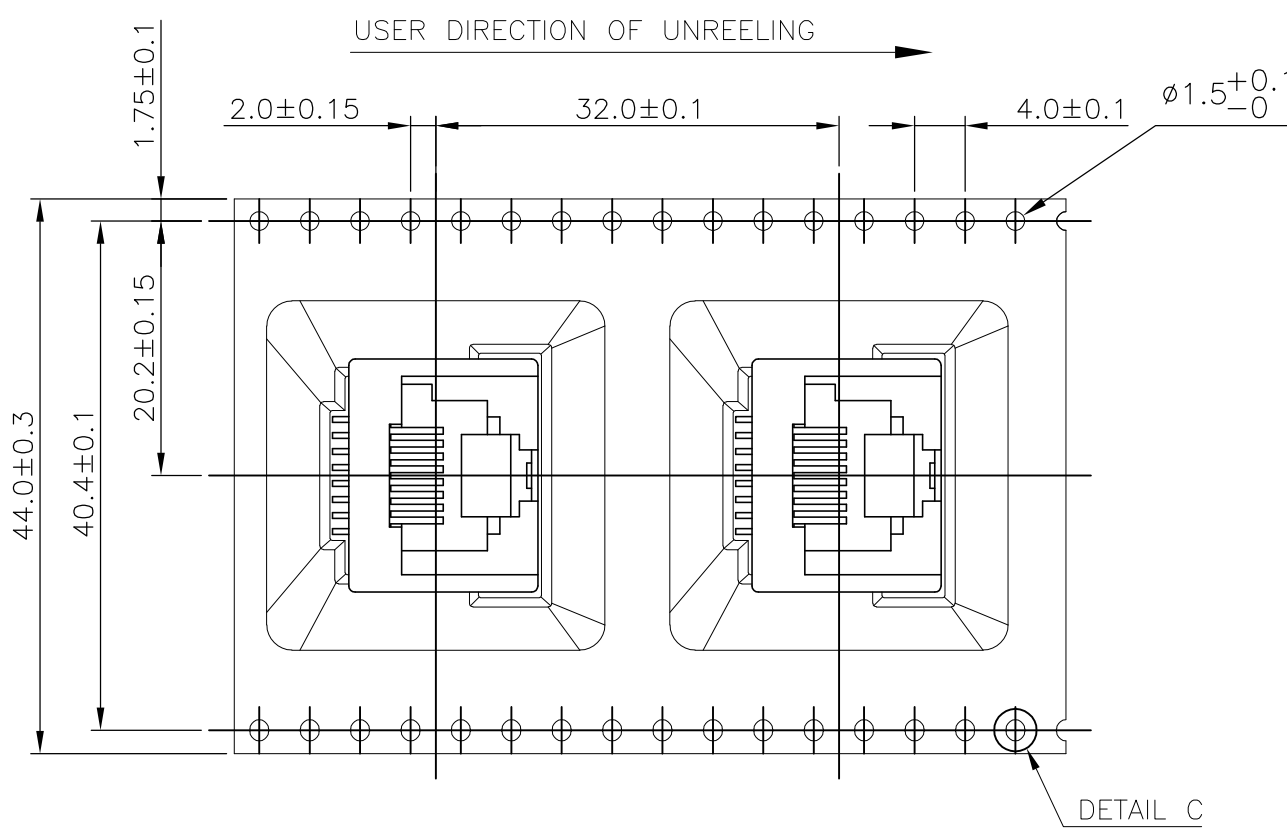
| | | | | | |
|--|--|--------------------------------|------|---|--|
| THIS DRAWING IS A CONTROLLED DOCUMENT. | | DWN O. HU 06NOV2007 | | | |
| | | CHK S. HOU 06NOV2007 | | | |
| | | APVD W. KODAMA 06NOV2007 | NAME | | |
| DIMENSIONS: mm | | PRODUCT SPEC 108-57464 | | MODULAR JACK RJ45/RJ11 TOP ENTRY, SMT TYPE | |
| TOLERANCES UNLESS OTHERWISE SPECIFIED: | | APPLICATION SPEC | | RESTRICTED TO | |
| 0 PLC ± - 1 PLC ± 0.3 2 PLC ± 0.2 3 PLC ± 0.15 4 PLC ± - ANGLES ± - | | WEIGHT 3.3 | | SIZE A3 | |
| MATERIAL SEE NOTE | | FINISH SEE NOTE | | CAGE CODE 00779 | |
| | | CUSTOMER DRAWING | | DRAWING NO C-1734858 | |
| | | SCALE 1:1 | | SHEET 2 of 3 | |
| | | | | REV B | |

THIS DRAWING IS UNPUBLISHED. RELEASED FOR PUBLICATION
 © COPYRIGHT - TE Connectivity ALL RIGHTS RESERVED.

| P | LTR | DESCRIPTION | DATE | DWN | APVD |
|---|-----|-------------|------|-----|------|
| - | - | SEE SHEET 1 | - | - | - |

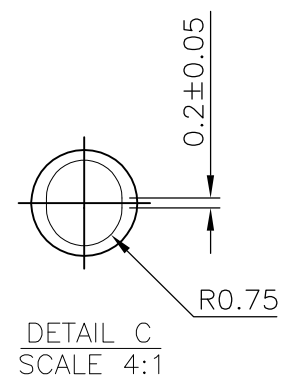
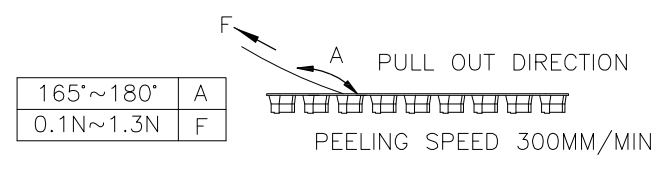


- NOTE:
- PACKAGING MATERIAL:
 - COVER TAPE: COMPOSITE OF POLYETHYLENE TEREPHTHALATE (PET)
 - CARRIER: POLYSTYRENE (PS)
 - CARRIER REEL: CORRUGATED FIBER
 - BAG: PE
 - BOX: CORRUGATED FIBER.
 - EACH BAG SHALL BE INCLUDED:
 - *DESICCANT
 - PEELING STRENGTH: 0.1~1.3N(1~130 GRAMS) FOR 12~56mm WIDE CARRIER TAPES
 - PEELING SPEED: 300mm/MINUTES.



| GROSS WEIGHT | NET WEIGHT | PCS/ REEL | REEL/ BOX | PCS/ BOX | PART NUMBER |
|--------------|------------|-----------|-----------|----------|---------------|
| 8.8KG | 5.57KG | 150 | 6 | 900 | 2-1734858-5~8 |
| 8.3KG | 5.02KG | | | | 2-1734858-1~4 |
| 8.1KG | 4.91KG | | | | 1-1734858-5~8 |
| 7.7KG | 4.49KG | | | | 1-1734858-1~4 |
| 7.1KG | 3.88KG | | | | 1734858-X |

* COVER TAPE PEELING FORCE:



| | | | | | |
|--|--|--------------------------|------------------------|--------------|------------|
| THIS DRAWING IS A CONTROLLED DOCUMENT. | | DWN O. HU 06NOV2007 | TE Connectivity | | |
| DIMENSIONS: mm | | CHK S. HOU 06NOV2007 | | | |
| TOLERANCES UNLESS OTHERWISE SPECIFIED: | | APVD W. KODAMA 06NOV2007 | NAME | | |
| 0 PLC ± - | | PRODUCT SPEC | MODULAR JACK RJ45/RJ11 | | |
| 1 PLC ± 0.3 | | APPLICATION SPEC | TOP ENTRY, SMT TYPE | | |
| 2 PLC ± 0.2 | | 108-57464 | SIZE | CAGE CODE | DRAWING NO |
| 3 PLC ± 0.15 | | - | A3 | 00779 | C-1734858 |
| 4 PLC ± - | | WEIGHT 3.3 | RESTRICTED TO | | |
| ANGLES ± ± | | CUSTOMER DRAWING | SCALE 1:1 | SHEET 3 OF 3 | REV B |
| FINISH SEE NOTE | | | | | |

单击下面可查看定价，库存，交付和生命周期等信息

[>>TE Connectivity\(泰科\)](#)