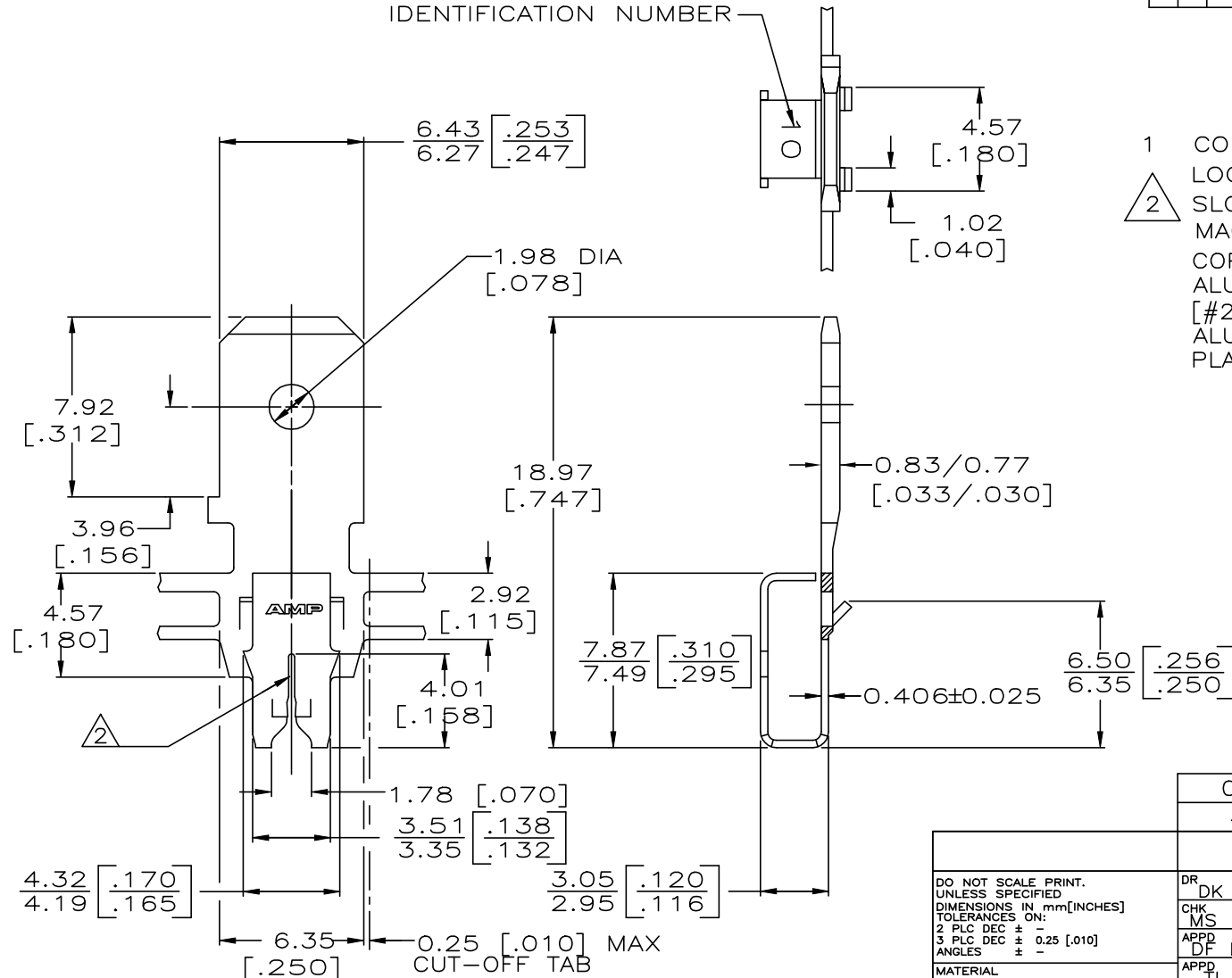


THIS DRAWING IS UNPUBLISHED. RELEASED FOR PUBLICATION .19  
 © COPYRIGHT 19 BY AMP INCORPORATED. ALL INTERNATIONAL RIGHTS RESERVED.

LOC	DIST	REVISIONS				
P	F	ZONE	LTR	DESCRIPTION	DATE	APPD
AF	50		E1	REVISED PER ECR-19-013909	30SEP19	PC/MB

IDENTIFICATION NUMBER



- 1 CONTINUOUS STRIP ON REELS WITH TERMINALS LOCATED ON 8.38 [.330] CENTERS.
- 2 SLOT TERMINATES EITHER SINGLE OR DOUBLE MAGNET WIRES OF THE SAME TYPE AND SIZE, COPPER RANGE IS 0.36-0.57mm [#27-#23] AWG. ALUMINIUM RANGE IS 0.51-0.64mm [#24-#22] AWG, ALUMINIUM WIRE RANGE APPLIES FOR POST TIN PLATED PART NUMBERS ONLY.

082 PRE-MILLED BRASS	63571-2
4M PRE-MILLED BRASS	63571-1
MATERIAL	PART NUMBER

DO NOT SCALE PRINT. UNLESS SPECIFIED DIMENSIONS IN mm [INCHES] TOLERANCES ON: 2 PLC DEC ± - 3 PLC DEC ± 0.25 [.010] ANGLES ± -	DR DK SCHRUM 2/8/90 CHK MS FEHER 2/9/90 APPD DF DECKER 2/9/90 APPD TL SHUTTER 2/12/90
MATERIAL SEE TABLE	PRODUCT SPEC -
FINISH 0.002032 [.000080] MIN TIN PER MIL-T-10727	APPLICATION SPEC 114-2094
WEIGHT -	

		NAME	
		TAB, 6.35 [.250] FASTON,™ MAG-MATE™	
SIZE	FSCM NO	DRAWING NO	
<b>B</b>	00779	63571	
SCALE	5:1	SHEET	
		1 OF 1	

单击下面可查看定价，库存，交付和生命周期等信息

[>>TE Connectivity\(泰科\)](#)