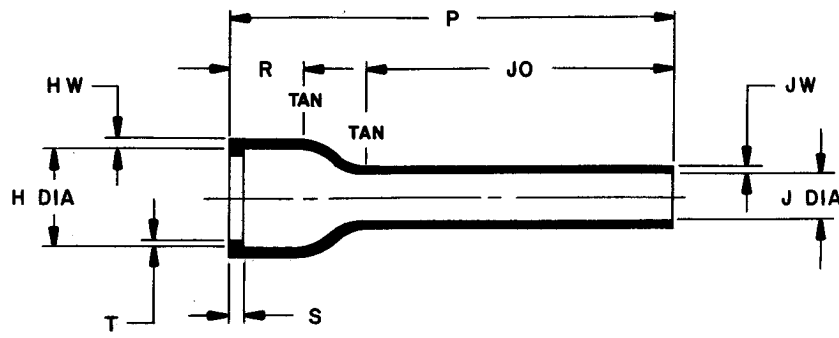


REVISIONS			
LTR	DESCRIPTION	DATE	APPROVED



AFTER UNRESTRICTED RECOVERY

ORDERING INFORMATION :  
 Base part number 202D263 -3 -29  
 Material dash number \_\_\_\_\_  
 -3 Polyolefin, semi-rigid (RT301)  
 Modification dash number \_\_\_\_\_

H		J		P	JO	R	S	T	HW	JW
MIN	MAX	MIN	MAX	±10%	±10%	REF	REF	REF	±20%	±20%
a	b	a	b	b	b	b	b	b	b	b
1.72	1.34	1.72	.48	4.00	2.42	.60	.12	.065	.08	.045

If this document is printed it becomes uncontrolled. Check for the latest revision.

SPECIFICATION CONTROL DRAWING ( LIMITED DISTRIBUTION )

NOTES:

- All dimensions are in inches.
- Dimensions appearing in table are as follows :  
 a - As supplied  
 b - After unrestricted recovery

THIS DRAWING AND THE INFORMATION SET FORTH HEREON ARE THE PROPERTY OF RAYCHEM CORPORATION, AND ARE TO BE HELD IN TRUST AND CONFIDENCE. PUBLICATION, DUPLICATION, DISCLOSURE, OR USE FOR ANY PURPOSE NOT EXPRESSLY AUTHORIZED IN WRITING BY RAYCHEM CORPORATION IS PROHIBITED.	DRAWN	C. WARREN 6-21-83	<b>Raychem</b> RAYCHEM CORPORATION 300 CONSTITUTION DRIVE MENLO PARK, CALIFORNIA 94025	
	CHECKED			
	DSGN APPD	<i>[Signature]</i> 6-22-83	TITLE	BOOT, STRAIGHT, W / LIP
	MFG APPD	<i>[Signature]</i> 7/1/83	CODE IDENT.	NO. 06090
	QC APPD	<i>[Signature]</i> 6-29-83	DWG. NO.	202D263-3-29
	MKTG APPD	<i>[Signature]</i> 7/6/83	SIZE B	SCALE
TECH SERVICES	R. WATSON 6/22/83	PROJECT	SHEET 1 OF 1	

单击下面可查看定价，库存，交付和生命周期等信息

[>>TE Connectivity\(泰科\)](#)