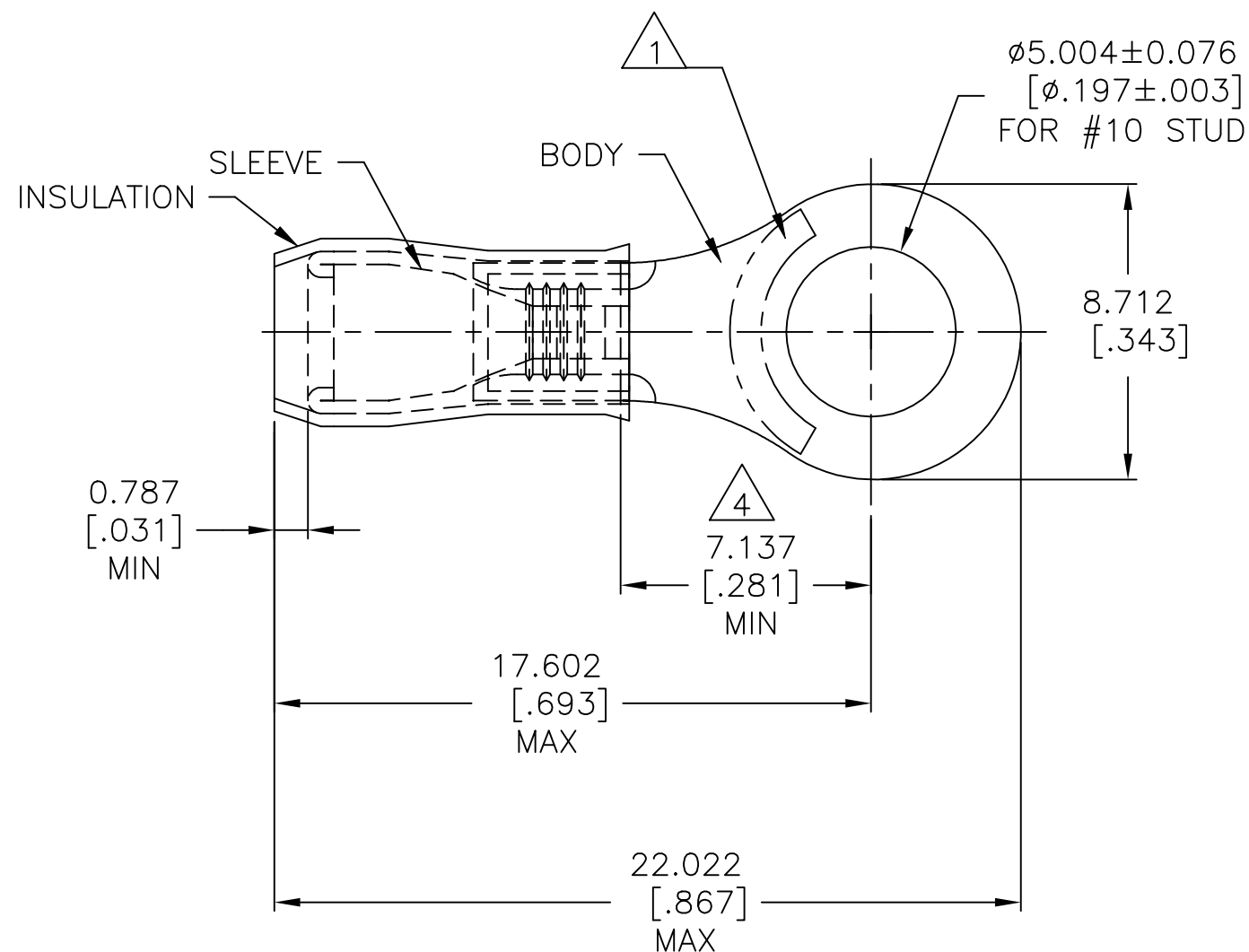


P	LTR	DESCRIPTION	DATE	DWN	APVD
G		REV PER ECR 09-025674	30NOV09	JR	TM
H		REVISED PER ECO-17-013200	07MAY2018	RS	DR

**AMP**  
WIRE RANGE

14-12 AWG  
SOLID OR STRANDED



- 1 STAMP AMP 14-12, LOCATION AS SHOWN.
- 2 WIRE INSULATION DIA RANGE IS  $\phi 2.032 - \phi 3.175 [\phi .080 - \phi .125]$
- 3 BODY MATERIAL THK IS  $0.762 \pm 0.051 [.030 \pm .002]$
- 4 APPLIES FROM CENTER OF STUD HOLE TO EDGE OF METAL WIRE BARREL
- 5 MATERIAL: BODY & SLEEVE - COPPER PER ASTM B-152  
INSULATION: NYLON
- 6 FINISH: BODY & SLEEVE - TIN PLATE PER ASTM B-545  
INSULATION: COLOR - WHITE
- 7 MAX RECOMMENDED OPERATING TEMP  $105^{\circ}\text{C} [221^{\circ}\text{F}]$
- 8 VOLTAGE RATING: 300 V MAX
- 9 WIRE CROSS SECTIONAL AREA RANGE:  
 $1.65 - 3.45\text{mm}^2 [ 3,260 - 6,800 ]$  CMA

1000	LOOSE PIECE	152872
QTY	PACKAGING TYPE	PART NO

THIS DRAWING IS A CONTROLLED DOCUMENT.		DWN jr_ruth 23AUG07	<b>STE</b> TE Connectivity Ltd.													
DIMENSIONS: mm [INCHES]		CHK T MICHELUTTI 23AUG07														
TOLERANCES UNLESS OTHERWISE SPECIFIED:		APVD T MICHELUTTI 23AUG07	NAME													
<table border="0"> <tr><td>0 PLC</td><td>± -</td></tr> <tr><td>1 PLC</td><td>± -</td></tr> <tr><td>2 PLC</td><td>± -</td></tr> <tr><td>3 PLC</td><td>± 0.127 [.005]</td></tr> <tr><td>4 PLC</td><td>± -</td></tr> <tr><td>ANGLES</td><td>± 5°</td></tr> </table>		0 PLC	± -	1 PLC	± -	2 PLC	± -	3 PLC	± 0.127 [.005]	4 PLC	± -	ANGLES	± 5°	PRODUCT SPEC	RING TONGUE, PIDG, WIRE SIZE: 14-12 AWG	
0 PLC	± -															
1 PLC	± -															
2 PLC	± -															
3 PLC	± 0.127 [.005]															
4 PLC	± -															
ANGLES	± 5°															
MATERIAL		APPLICATION SPEC	SIZE	RESTRICTED TO												
FINISH		114-2157	CAGE CODE													
5		WEIGHT	DRAWING NO													
6		A3 00779 C=152872														
CUSTOMER DRAWING			SCALE	REV												
			5:1	H												
			SHEET													
			1 OF 1													

单击下面可查看定价，库存，交付和生命周期等信息

[>>TE Connectivity\(泰科\)](#)