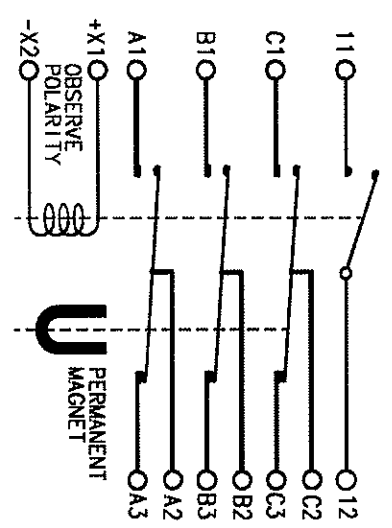
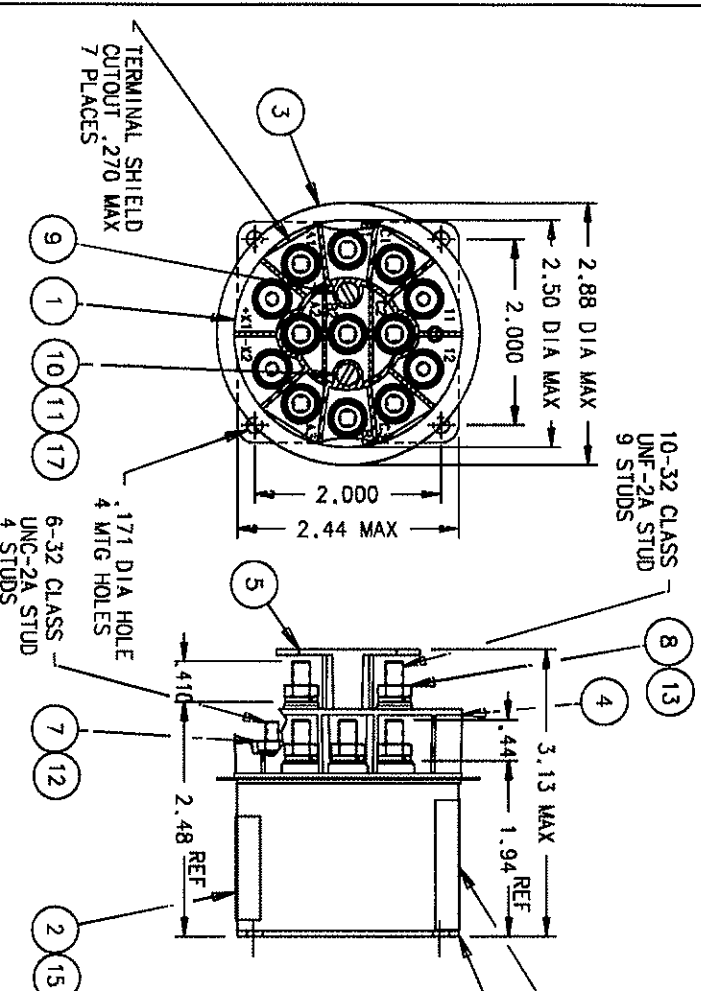


REV.	DESCRIPTION	DATE	APPROVED
T	41113 REDRAWN, FIND NOS 15, 16, & 17 ADDED	99/11/16	RS
U	42196 FIND 11 WAS 51805-011	00/04/12	RS
V	0862-03 .410 DIA WAS .438	03/07/31	CA



NOTE:
TERMINAL SHIELD IS NOTCHED FOR DRAINAGE

CONSTRUCTION
HERMETICALLY SEALED
NOMINAL VOLTAGE 115/200 V, 400HZ
CONTACT RATING 50 AMP, 115 V, 400 HZ
COIL RATING 28 VDC
PICKUP 18 V MAX HOT
DROPOUT 1-7 V MAX HOT
PICKUP TIME 50 MS MAX AT 28 V
DROPOUT TIME 50 MS MAX AT 28 V
BOUNCE 5 MS MAX
RATED DUTY CONTINUOUS
VIBRATION PROC 1, MIL-E-5272
AUX CONTACT SPST NO
AUX CONTACT RATING 5 AMP, 28 VDC OR 115 V, 400 HZ
MAX WEIGHT .89 LBS
AMBIENT TEMP -65°F TO 165°F

NOTE:
TERMINAL INSTALLATION TORQUE: 8-32 6-8 IN/LBS
10-32 15-20 IN/LBS

FIND NO	QTY	PART OR RECD	IDENTIFYING NO	NOMENCLATURE OR DESCRIPTION	FSCM NO	DRAWING OR SPECIFICATION	MATERIAL OR NOTE
17	2	51701-180		WASHER - 3/16 X .103 X .015 FLAT			MYLAR
16	1	39529-038		OVERLAY WIRING PLATE			
15	1	19888-010		CONTACTOR ASSEMBLY - PRIMARY			BRONZE
14	1	51810-054		WASHER - #10 SPLIT TYPE LOCK			BRONZE
13	9	51806-014		WASHER - #6 SPLIT TYPE LOCK			BRONZE
12	4	51805-014		WASHER - #5 SPLIT TYPE LOCK			BRASS
11	2	51205-391		SCREW - 5-40 X 1 1/8 RD. HD.			BRASS
10	1	51205-391		SCREW - 5-40 X 3/8 RD. HD.			BRASS
9	1	50410-054		NUT - #10-32 X 5/16 X 9/64			BRASS
8	9	50406-034		NUT - #6-32 X 1/4 X 5/64			BRASS
7	4	19203-001		PLATE - WIRING DIAGRAM			
6	1	17062-001		SHIELD - TERMINAL ZYTEL 51			
5	1	17061-001		SHIELD - TERMINAL ZYTEL 51			
4	1	17002-001		PLATE - SHIELD			
3	1	16043-001		PLATE - NAME			
2	1	15537-015		PLATE - BASE COVER			
1	1						

UNLESS OTHERWISE SPECIFIED DIMENSIONS ARE IN INCHES TOLERANCES ARE		2 PL DEC.13 PL DEC. ANGLES	
* .030	* .010	* 1°	
REF			
GAEK GR-835EA NORTHRUP 64R100-1			
DR BY	CSC 103/08/19	CHK BY	CA 03/08/20
ENGR	CA 03/08/21	MFG	CA 03-08-22
SIZE	CODE IDENT		
C	74063		
SCALE	MODEL SHEET		
TYCO Electronics 175 N. DIAMOND STREET WASHINGTON, OHIO 44022		CONTACTOR - 3PDT HERMETICALLY SEALED 093	
DWG NO. DH-7BB		REF TYCO P/N 0-1616037-7	

单击下面可查看定价，库存，交付和生命周期等信息

[>>TE Connectivity\(泰科\)](#)