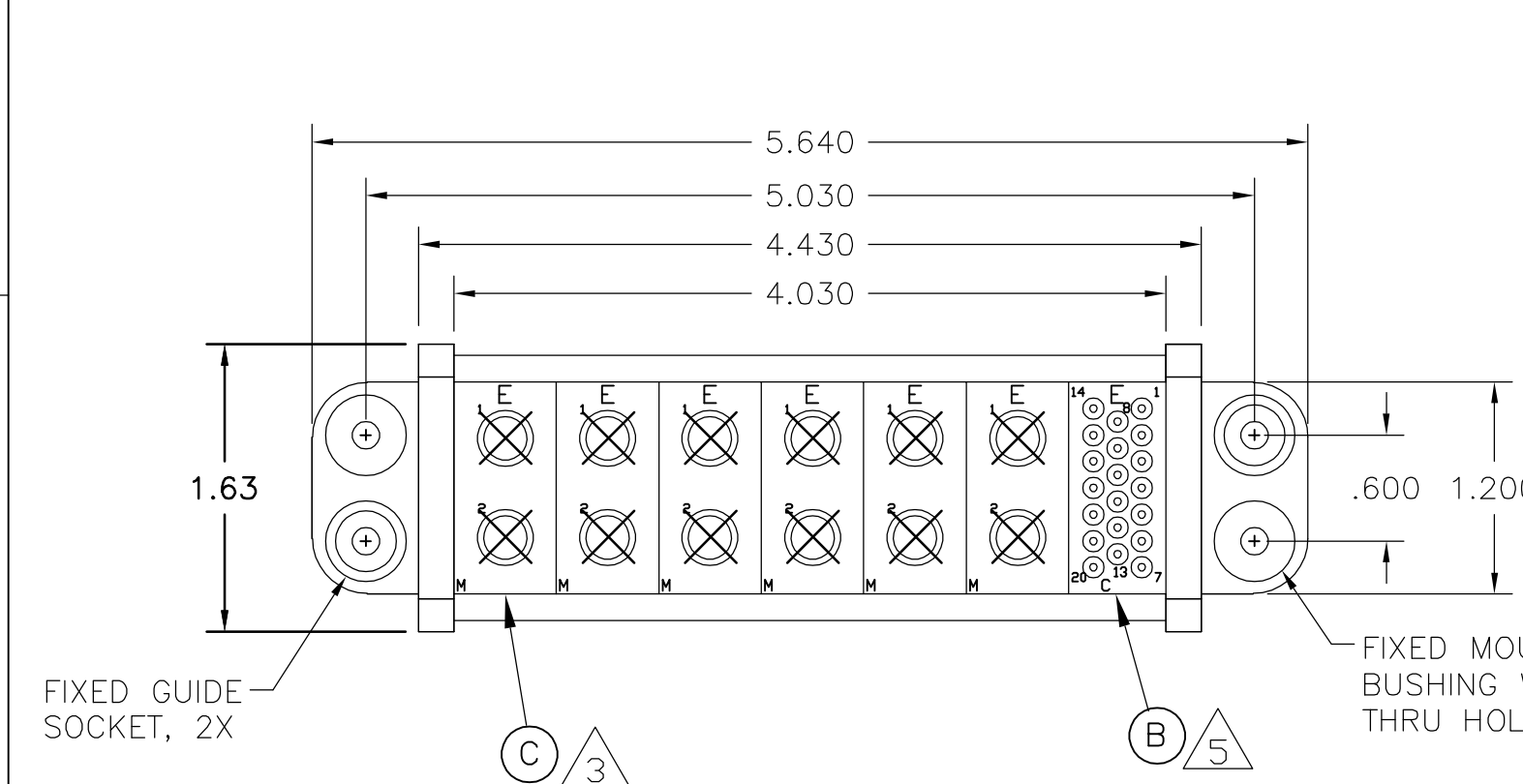


THIS DRAWING IS UNPUBLISHED. RELEASED FOR PUBLICATION
 © COPYRIGHT BY TYCO ELECTRONICS CORPORATION. ALL RIGHTS RESERVED.

| | | | | | | | |
|-----|------|-----------|-----|-------------|--------|-----|------|
| LOC | DIST | REVISIONS | | | | | |
| GP | 00 | P | LTR | DESCRIPTION | DATE | DWN | APVD |
| | | | A | NEW RELEASE | 5MAR07 | RG | DO |



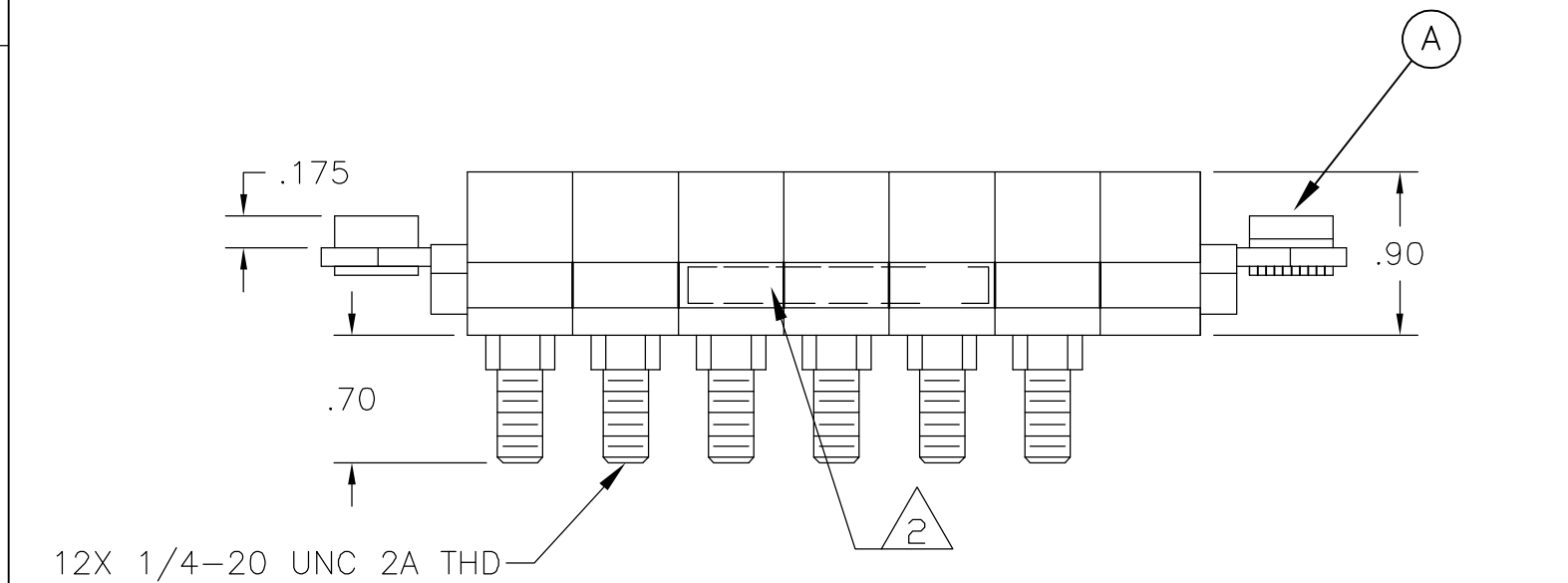
1. PART NUMBER CHANGES AND/OR DESIGN CHANGES AFFECTING ITEM INTERCHANGEABILITY REQUIRE PRIOR TYCO APPROVAL AND AUTHORIZATION BY REVISION TO THIS DRAWING.

2. ITEMS PROVIDED TO THIS SPECIFICATION TO BE PERMANENTLY IDENTIFIED PER THE FOLLOWING IDENTIFIER:

YEAR WEEK
 TYCO PART NUMBER DATE CODE (e.g. 0212)
 XXXXXXXX-X XXXX

- 3. MODULE M SOCKET CONTACTS INSTALLED.
- 4. MOUNTING FLANGE BUSHINGS ACCEPT 6/32 SCREW (.156 DIA. CLEARANCE HOLE, FLOAT MOUNT) OR 8/32 SCREW (.173 DIA. CLEARANCE HOLE, FLOAT MOUNT), USER SUPPLIED.
- 5. MODULES NOTED ARE CRIMP REMOVABLE STYLE CONTACTS. WILL BE PURCHASED SEPARATELY. REF SOCKET CONTACT, SIZE 20, PN: 1648325-1

6. THIS CONNECTOR MATES WITH PIN CONN. TYCO PN 6646098-1

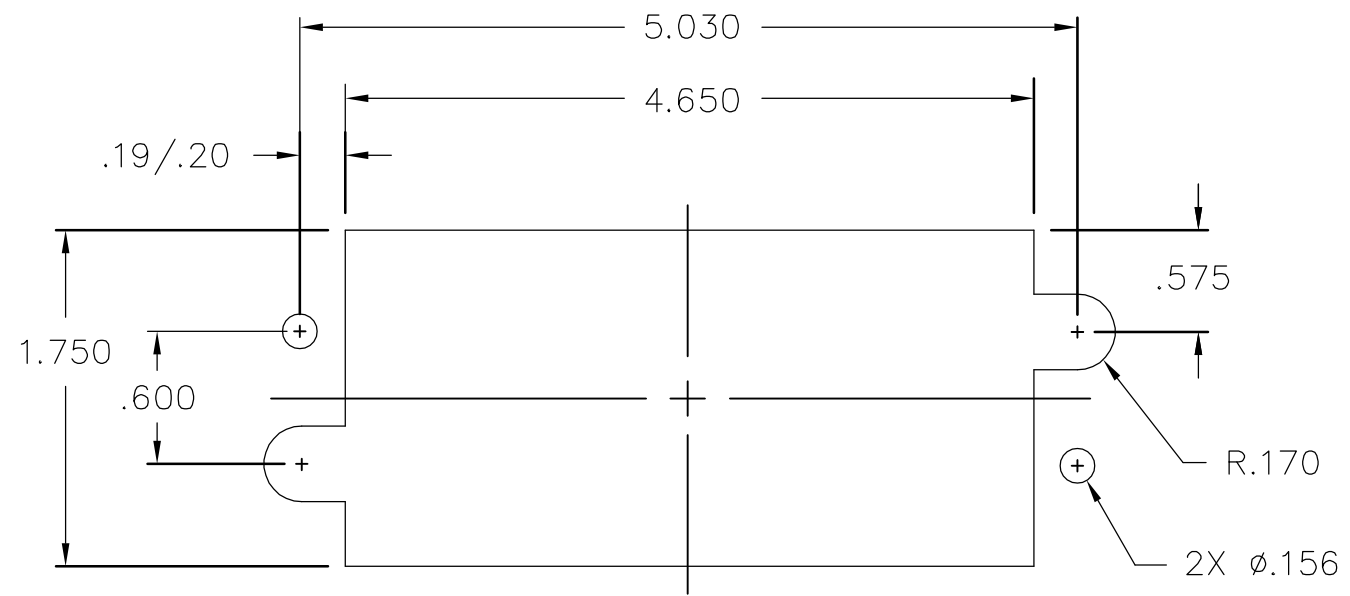


| | | | | |
|---|----|-------------|----------------|------|
| 3 | 6 | 6648454-1 | MODULE M | C |
| 5 | 1 | 1648468-1 | MODULE C | B |
| | 2 | 6648263-1 | END CAP, FIXED | A |
| | -1 | PART NUMBER | DESCRIPTION | ITEM |

| | | | | |
|--|--|----------------------------------|---|--------------------|
| THIS DRAWING IS A CONTROLLED DOCUMENT. | | DWN R.GRZYBOWSKI 05MAR2007 | Tyco Electronics Corporation Harrisburg, PA 17105-3608 | |
| DIMENSIONS: INCHES | | CHK D.ORRIS 5MAR07 | NAME S.FLICKINGER | |
| TOLERANCES UNLESS OTHERWISE SPECIFIED: | | APVD S.FLICKINGER 5MAR07 | PRODUCT SPEC | |
| 0 PLC ± - 1 PLC ± - 2 PLC ± .02 3 PLC ± .010 4 PLC ± - ANGLES ± 5 | | APPLICATION SPEC | | |
| MATERIAL | | WEIGHT | SIZE A3 | CAGE CODE 00779 |
| | | | DRAWING NO C-6646099 | |
| CUSTOMER DRAWING | | | RESTRICTED TO | |
| | | SCALE 1:1 | SHEET 1 OF 2 | REV A |

THIS DRAWING IS UNPUBLISHED. RELEASED FOR PUBLICATION
 © COPYRIGHT - BY TYCO ELECTRONICS CORPORATION. ALL RIGHTS RESERVED.

| LOC | DIST | REVISIONS | | | | | |
|-----|------|-----------|-----|-------------|------|-----|------|
| GP | 00 | P | LTR | DESCRIPTION | DATE | DWN | APVD |
| | | - | | SEE SHEET 1 | - | - | - |



SOCKET PANEL MOUNT CUTOUT
 SCALE: NONE

| | | | | |
|--|--|----------------------------------|---|---------------|
| THIS DRAWING IS A CONTROLLED DOCUMENT. | | DWN R.GRZYBOWSKI 05MAR2007 | Tyco Electronics Corporation Harrisburg, PA 17105-3608 | |
| DIMENSIONS: INCHES | | CHK D.ORRIS 5MAR07 | NAME | |
| TOLERANCES UNLESS OTHERWISE SPECIFIED: 0 PLC ± - 1 PLC ± - 2 PLC ± .02 3 PLC ± .010 4 PLC ± - ANGLES ± 5 | | APVD S.FLICKINGER 5MAR07 | SOCKET CONNECTOR DOMINO W/PANEL CUT-OUT | |
| MATERIAL | | PRODUCT SPEC | SIZE | RESTRICTED TO |
| FINISH | | APPLICATION SPEC | CAGE CODE | |
| - | | WEIGHT | DRAWING NO | |
| - | | - | A3 00779 | |
| | | CUSTOMER DRAWING | SCALE | |
| | | | 1:1 | |
| | | | SHEET | |
| | | | 2 OF 2 | |
| | | | REV | |
| | | | A | |

单击下面可查看定价，库存，交付和生命周期等信息

[>>TE Connectivity\(泰科\)](#)