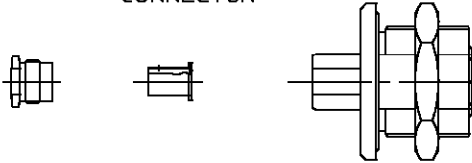


CONNECTOR TYPE	CABLE TYPE	TOOLS REQ'D
7-16 BULKHEAD CABLE JACK SOLDER CLAMP ATTACHMENT	.250 SR COAXIAL CABLE	NO SPECIAL TOOLS REQUIRED

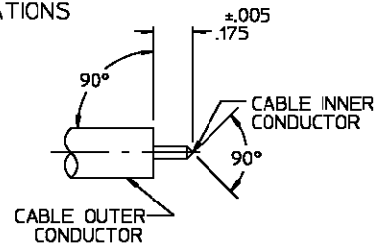
CONNECTOR



ASSEMBLY OPERATIONS

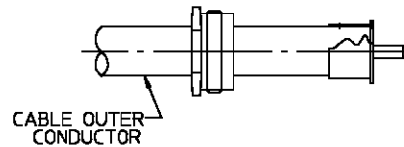
1.0 PREPARATION OF CABLE

- 1.1 TRIM CABLE TO DIMENSIONS SHOWN.
- 1.2 SHAPE BLUNT END OF INNER CONDUCTOR TO AN 85°-90° CONE.



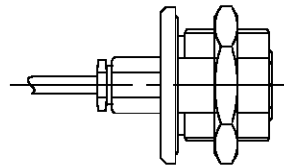
2.0 SOLDERING OF SOLDER FERRULE TO CABLE

- 2.1 SLIDE CLAMP NUT ONTO CABLE.
- 2.2 PUSH SOLDER FERRULE ONTO CABLE UNTIL IT BUTTS AGAINST OUTER CONDUCTOR.
- 2.3 SOLDER FERRULE TO THE OUTER CONDUCTOR UNTIL THERE IS A SMALL FILLET BETWEEN THE TWO.
- 2.4 TRIM DIELECTRIC FLUSH TO FERRULE IF REQUIRED.



3.0 ATTACH CABLE TO CONNECTOR

- 3.1 PUSH FERRULE/CABLE ASSEMBLY INTO CONNECTOR.
- 3.2 SLIDE CLAMP NUT UP TO CONNECTOR AND TORQUE TO 4.0Nm±0.5Nm.



单击下面可查看定价，库存，交付和生命周期等信息

[>>TE Connectivity\(泰科\)](#)