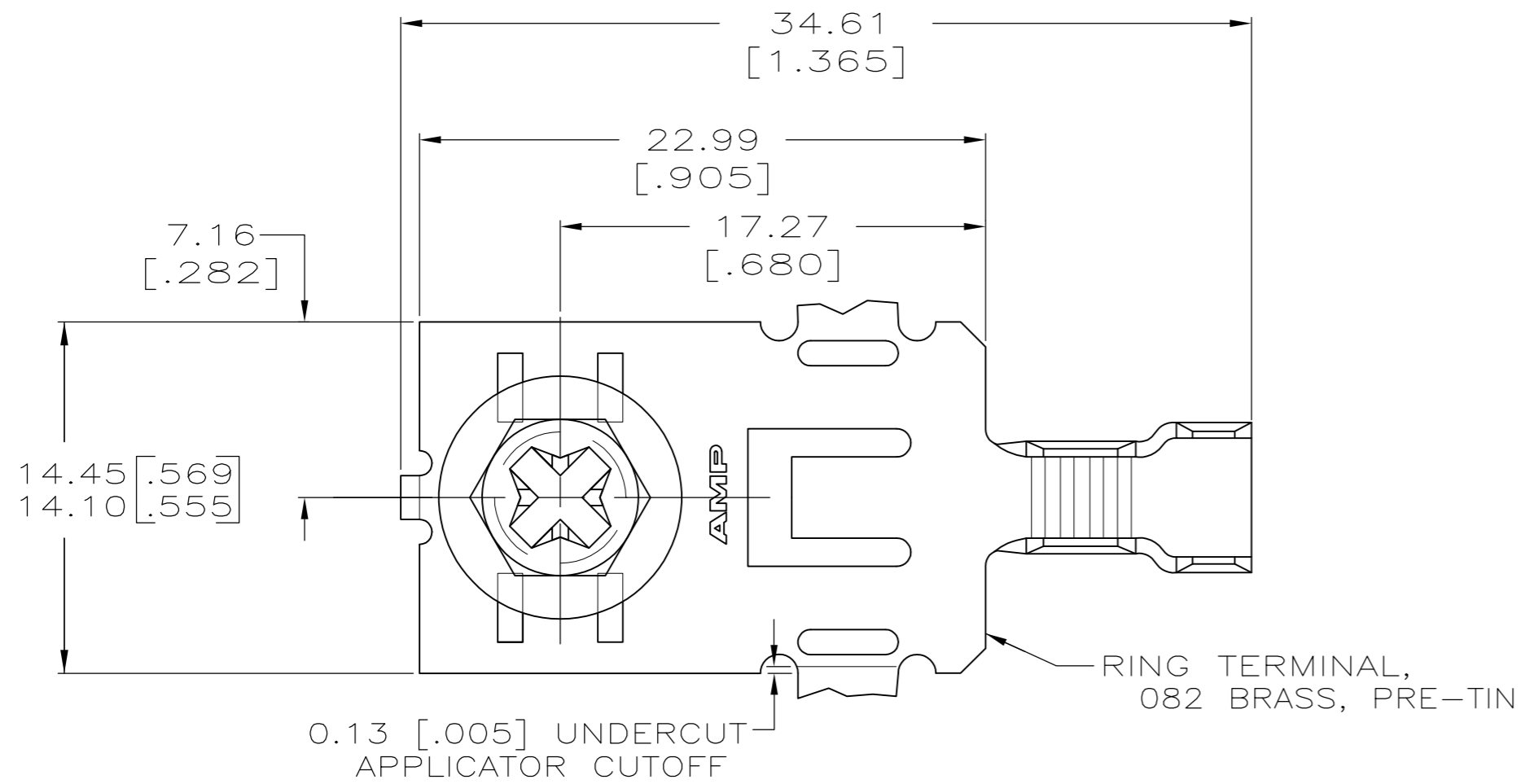
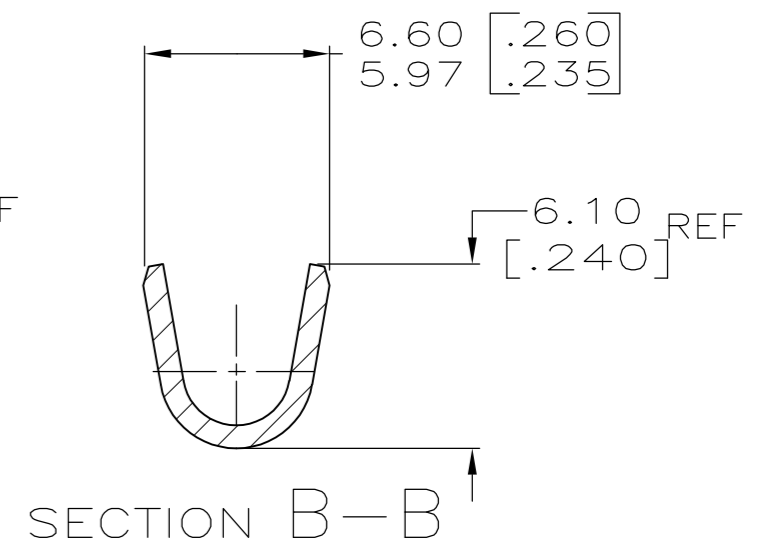
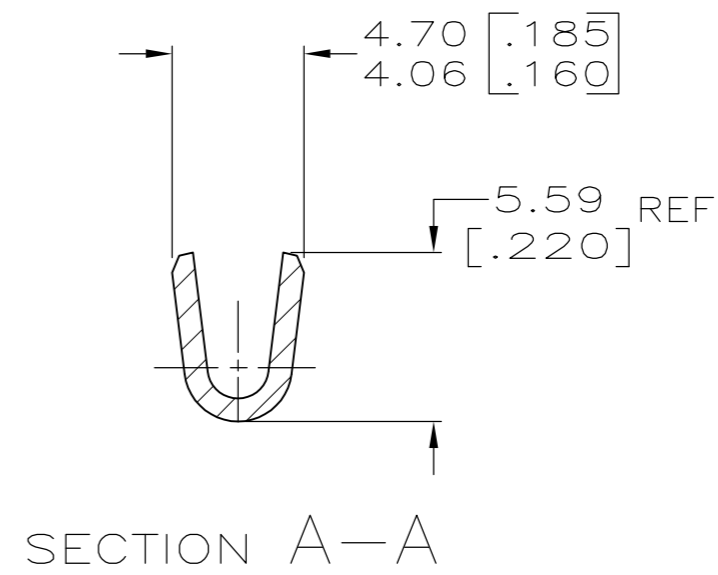
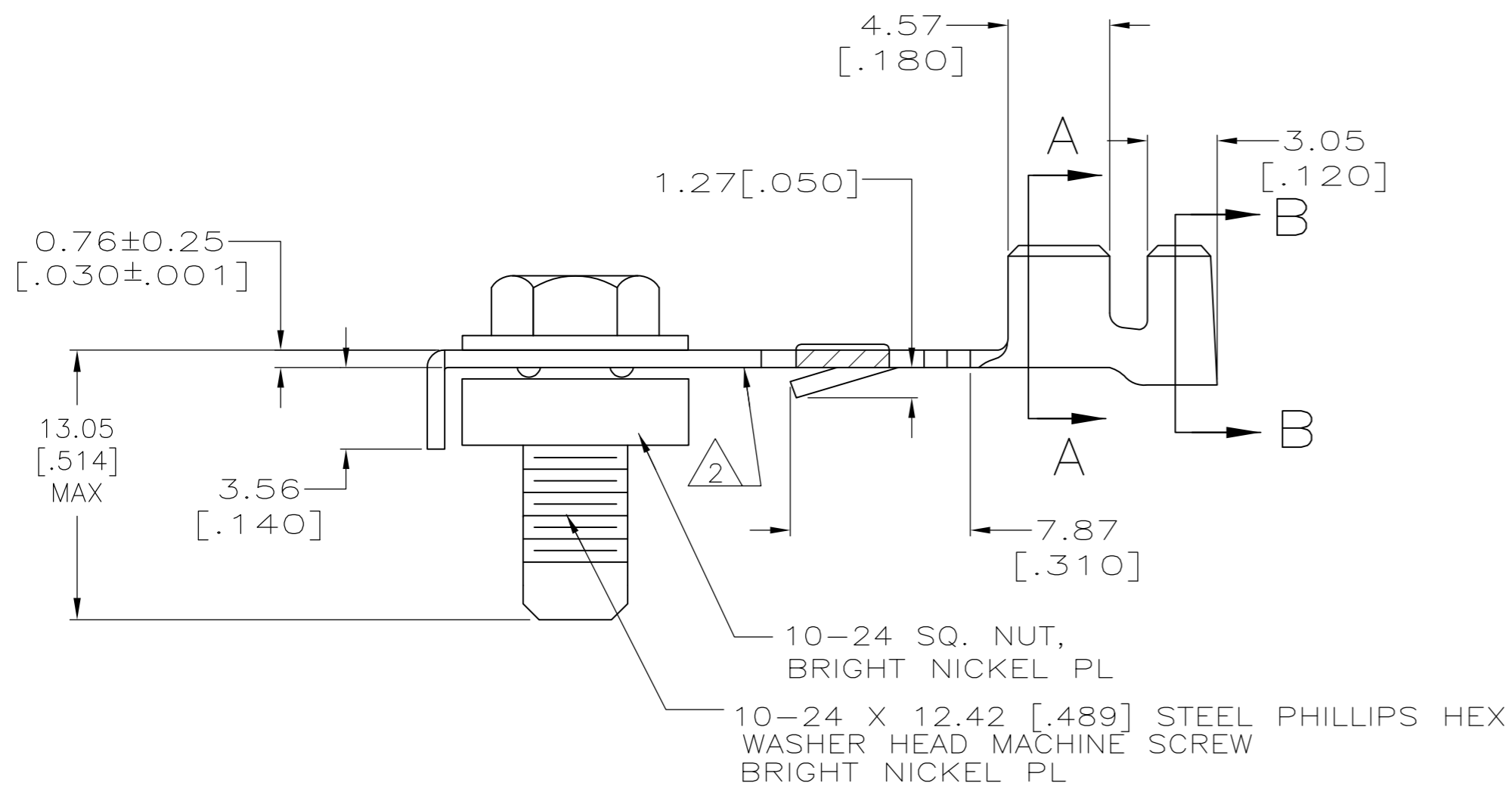


THIS DRAWING IS UNPUBLISHED. RELEASED FOR PUBLICATION  
 © COPYRIGHT - By - ALL RIGHTS RESERVED.

REVISIONS					
P	LTR	DESCRIPTION	DATE	DWN	APVD
B1		REVISED PER ECR-11-025318	19DEC11	KH	GJ
B2		REVISED PER ECR-17-002254	16FEB17	ST	TD



- CONTINUOUS STRIP ON REEL.
- VERTICAL BURRS NOT TO EXCEED 0.13 [.005] ALONG THIS EDGE.
- BACK OUT TORQUE OF SCREW TO BE A MIN OF 5 INCH LBS AND A MAX OF 25 INCH LBS.
- REFERENCE APPLICATOR LOG SHEET FOR CRIMP INFORMATION.
- PART TO HAVE HARDENED NUTS



2.79-4.06 [.110-.160] DIA	#16-#12 AWG	521843-1
INSULATION RANGE	WIRE RANGE	PART NUMBER

THIS DRAWING IS A CONTROLLED DOCUMENT.		DWN JR RUTH 13SEP05	<b>TE</b> TE Connectivity		
DIMENSIONS: mm [INCHES]		CHK DONALD DECKER 13SEP05			
TOLERANCES UNLESS OTHERWISE SPECIFIED:		APVD DONALD DECKER 13SEP05	NAME		
0 PLC ± -		PRODUCT SPEC	108-1191		
1 PLC ± -		APPLICATION SPEC	114-2087		
2 PLC ± 0.38[.015]		WEIGHT	SIZE	CAGE CODE	DRAWING NO
3 PLC ± -		0.000000	A2	00779	C=521843
4 PLC ± -		FINISH	SCALE		SHEET
ANGLES ± -		SEE COMPONENT	4:1		1 OF 1
MATERIAL		SEE COMPONENT	CUSTOMER DRAWING		REV B2

单击下面可查看定价，库存，交付和生命周期等信息

[>>TE Connectivity\(泰科\)](#)