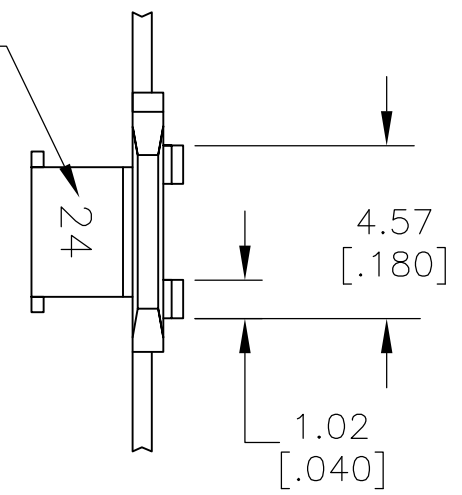


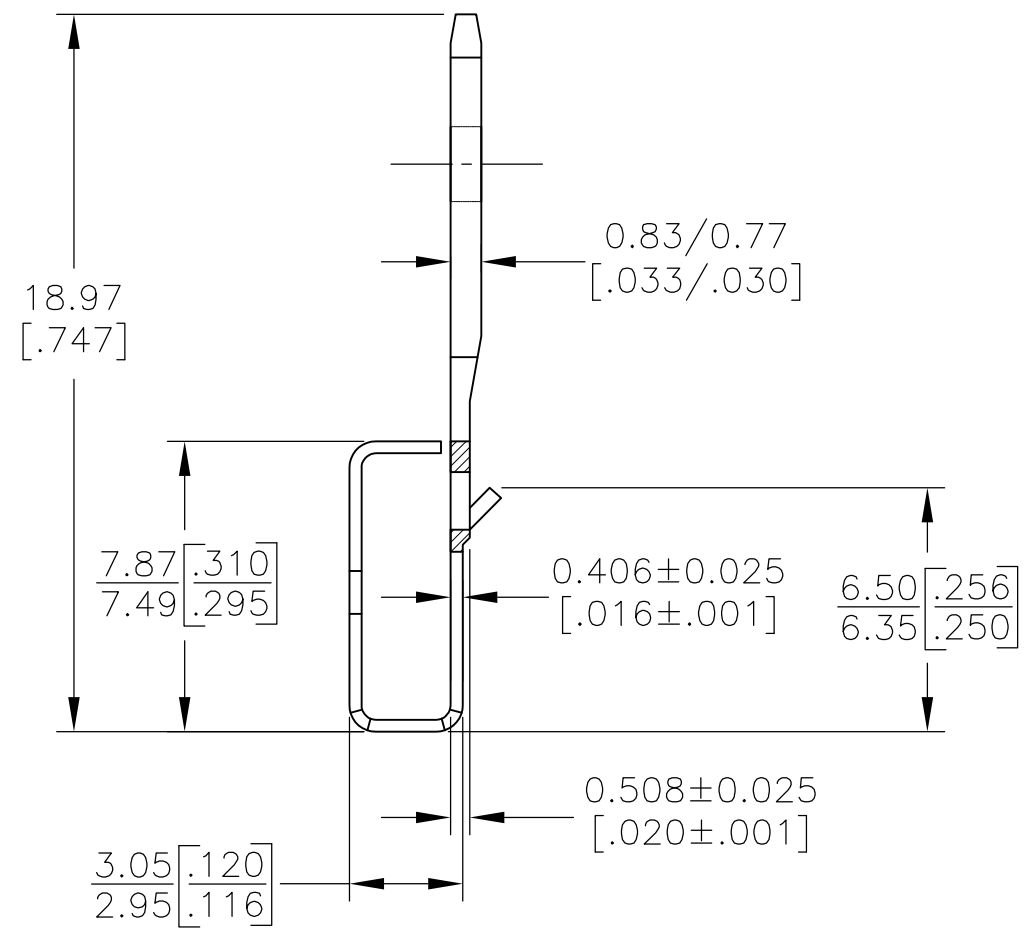
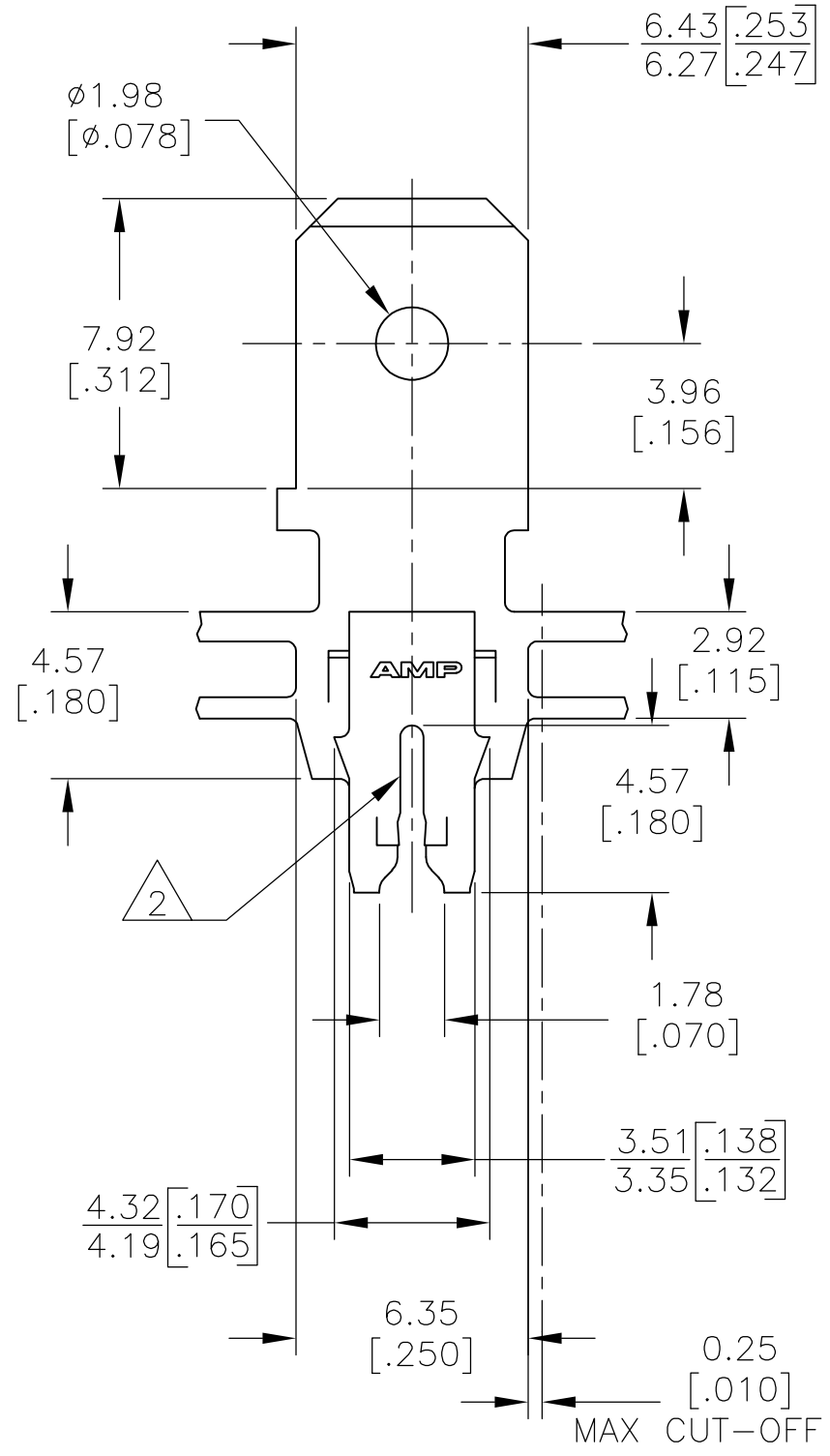
THIS DRAWING IS UNPUBLISHED. RELEASED FOR PUBLICATION  
 © COPYRIGHT - TE Connectivity Ltd. ALL RIGHTS RESERVED.

REVISIONS					
P	LTR	DESCRIPTION	DATE	DWN	APVD
	B2	REVISED PER ECR-18-018655	17DEC2018	BW	SV

IDENTIFICATION NUMBER 24 FOR MAGNET WIRE RANGE



- 1 CONTINUOUS STRIP ON REELS WITH TERMINALS LOCATED ON 8.38 [.330] CENTERS.
- 2 SLOT TERMINATES SINGLE COPPER MAGNET WIRE WIRE RANGE: 0.91-1.15mm [#19-#17] AWG ALUMINUM WIRE RANGE: 0.95-1.15mm [#18.5-#17] AWG. ALUMINUM WIRE RANGE APPLIES FOR POST-TIN PLATED VERSIONS ONLY.



63614-1  
PART NUMBER

THIS DRAWING IS A CONTROLLED DOCUMENT.		DWN MICHAEL S. FEHER 5/9/91	TE Connectivity Ltd.		
DIMENSIONS: mm[INCHES]		CHK JEFF R. RUTH 5/13/91			
TOLERANCES UNLESS OTHERWISE SPECIFIED:		APVD NELSON E. NEFF 5/13/91	NAME TAB, 6.35 [.250] FASTON,™ MAG-MATE™		
0 PLC ± -		PRODUCT SPEC 108-2012	APPLICATION SPEC		
1 PLC ± -		114-2094	SIZE A3	CAGE CODE 00779	DRAWING NO G-63614
2 PLC ± 0.25 [.010]		WEIGHT -	RESTRICTED TO -		
3 PLC ± -		CUSTOMER DRAWING			
4 PLC ± -		SCALE 5:1			
ANGLES ± -		SHEET 1 OF 1			
FINISH #4M HARD PRE-MILLED BRASS		REV B2			
0.002032[.000080] MIN TIN PER MIL-T-10727					

MAX CUT-OFF TAB

单击下面可查看定价，库存，交付和生命周期等信息

[>>TE Connectivity\(泰科\)](#)