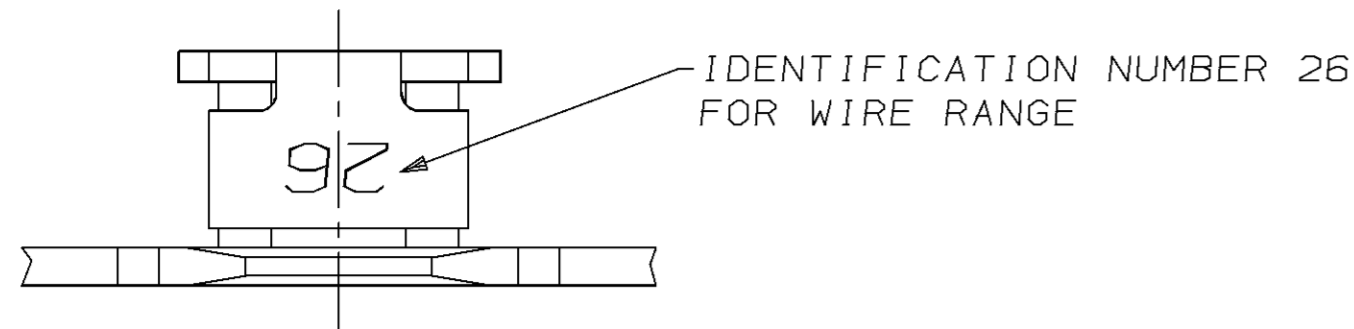
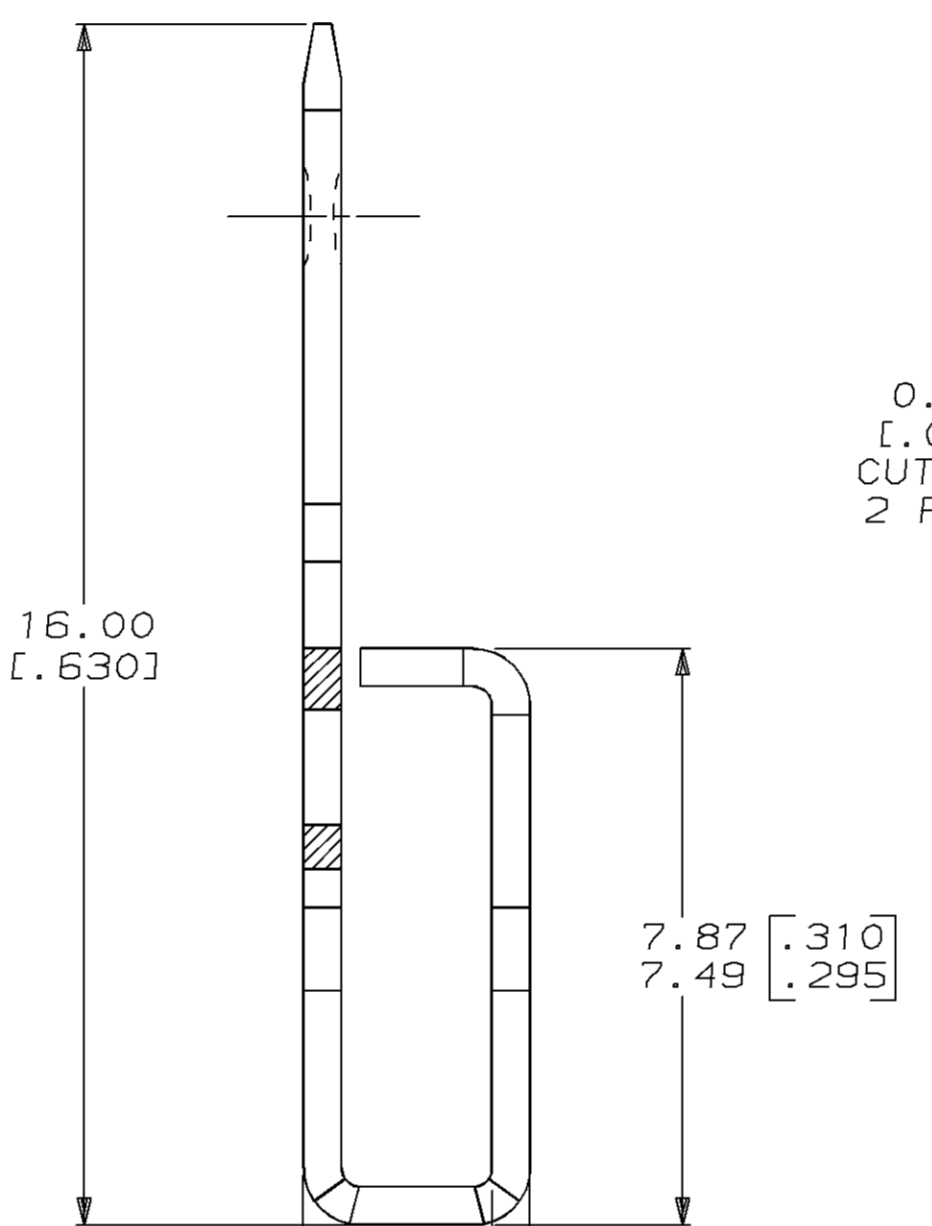
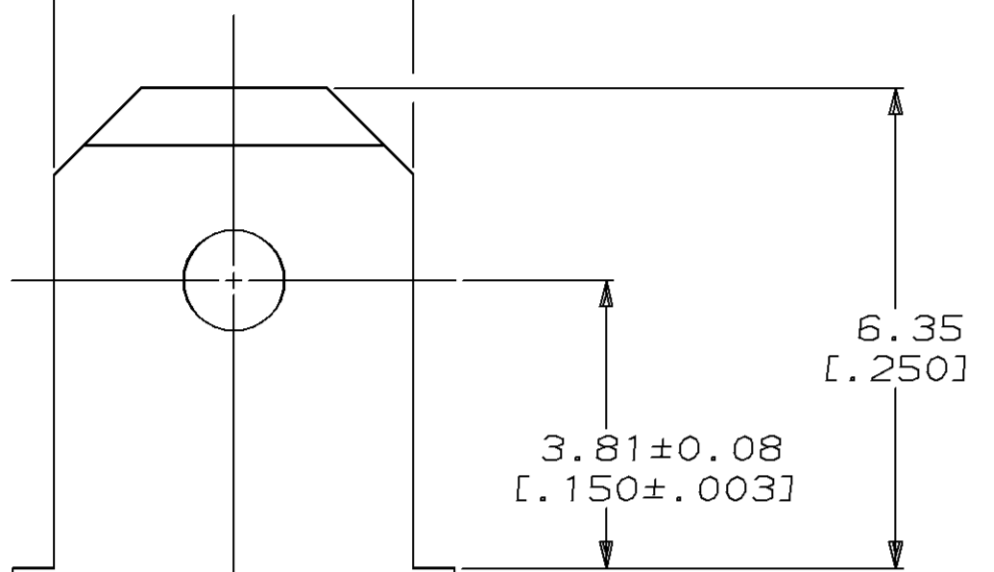


LOC	DIST	P	F	ZONE	LTR	REVISIONS	DATE	APPD	
AF	50					D	REVISED AND REDRAWN PER 0710-0086-96	18MAR96	MF/NN

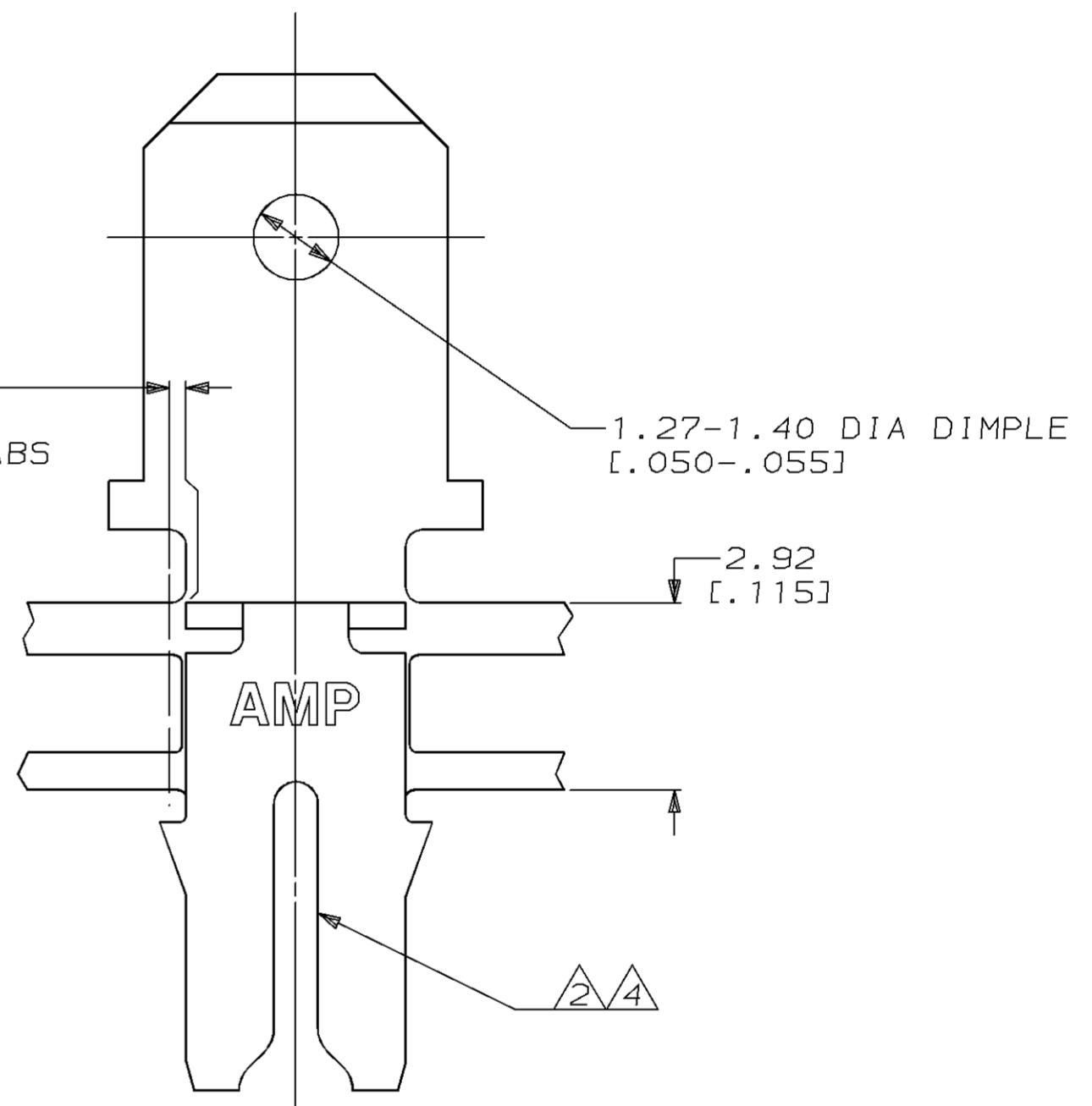
- 1 CONTINUOUS STRIP ON REELS WITH TERMINALS LOCATED ON 8.38±0.08 [.330±.003] CENTERS.
- 2 SLOT TERMINATES A SINGLE 0.81-1.02mm [#20-#18] AWG BARE SOLID COPPER WIRE.
- 3 AFTER INSERTION INTO PLASTIC HOLDER TAB PORTION MUST BE BENT OVER 45° TO 90° OR POTTED-IN TO PREVENT PULL-OUT WHEN MATING RECEPTACLE IS DISCONNECTED.
- 4 SLOT ALSO TERMINATES A SINGLE 0.81mm [#20] AWG OR A 0.81 [.032] DIA COPPER CLAD STEEL WIRE PER ASTM B452-67 CLASS 40 A.



4.83 [.190]  
4.72 [.186]



0.25 MAX [.010]  
CUT-OFF TABS  
2 PLACES



3.43 [.135]

4.83 [.190]

1.78 [.070]

3.51 [.138]  
3.35 [.132]

4.32 [.170]  
4.19 [.165]

62904-1

PART NO

DO NOT SCALE PRINT. UNLESS SPECIFIED DIMENSIONS IN mm [INCHES] TOLERANCES ON: 2 PLC DEC ± 0.25 [.010] 3 PLC DEC ± - ANGLES ± -	DR 18/MAR/96 MICHAEL S. FEHER CHK 22/MAR/96 RICHARD GRZYBOWSKI APPD 22/MAR/96 NELSON E. NEFF APPD 22/MAR/96 RICK OSKOWIS PRODUCT SPEC 108-2012 APPLICATION SPEC 114-2046 WEIGHT -
MATERIAL 4M BRASS FINISH 0.002032 [.000080] MIN TIN PER MIL-T-10727	

**AMP** AMP Incorporated  
Harrisburg, PA 17105-3608

NAME  
TERMINAL, TAB,  
4.75 [.187] FASTON™  
MAG-MATE™

SIZE C	CAGE CODE 00779	DRAWING NO G-62904
SCALE 10:1	SHEET 1 OF 1	

THIS DRAWING IS A CONTROLLED DOCUMENT FOR AMP INCORPORATED. IT IS SUBJECT TO CHANGE AND THE CONTROLLING ENGINEERING ORGANIZATION SHOULD BE CONTACTED FOR THE LATEST REVISION.

单击下面可查看定价，库存，交付和生命周期等信息

[>>TE Connectivity\(泰科\)](#)