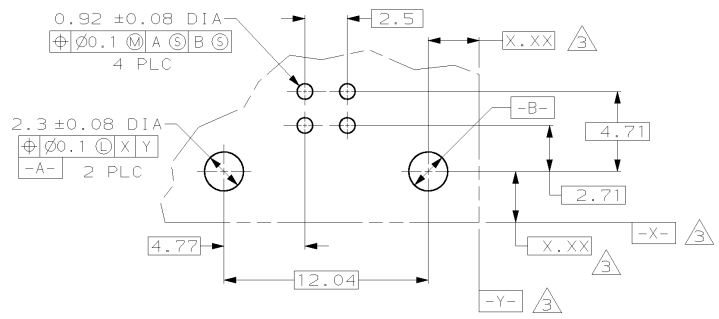
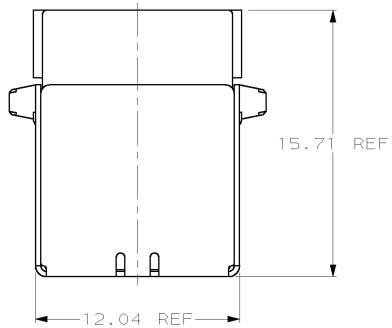
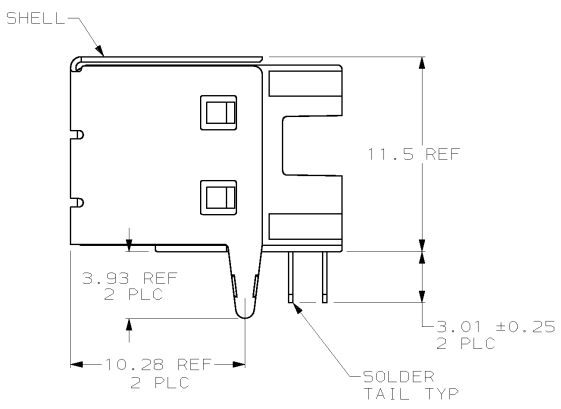
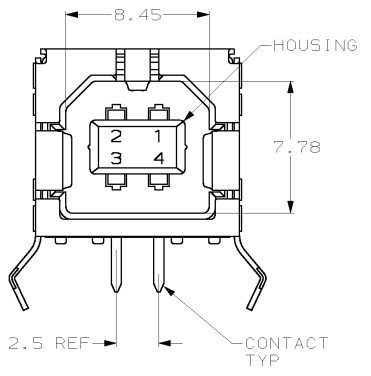


LOC	QTY	REVISIONS			
P	LTR	DESCRIPTION	DATE	OWN	APVD
J	00				
F		REVISED PER EC 0513-0426-03	11 JAN 04	JG	JG



PC BOARD MOUNTING DIMENSIONS 4



- 1 MATERIAL:  
SHELL & CONTACTS: COPPER ALLOY.  
HOUSING: UL 94V-0 RATED, THERMOPLASTIC, BLACK.
- 2 PLATING:  
CONTACTS: 0.076µm MINIMUM GOLD OVER 0.76µm MINIMUM PALLADIUM-NICKEL ON MATING AREA.  
3.8µm MINIMUM TIN-LEAD ON SOLDER TAILS.  
BOTH OVER 1.27µm MINIMUM NICKEL.  
CONTACT ALTERNATE PLATING: 0.76µm MIN GOLD ON MATING AREA, 3.8µm MIN TIN-LEAD ON SOLDER TAILS, BOTH OVER 1.27µm MIN NICKEL.  
SHELL: 5.1µm MINIMUM TIN.
- 3 DATUM AND BASIC DIMENSIONS ESTABLISHED BY CUSTOMER.
- 4 RECOMMENDED PC BOARD THICKNESS OF 1.57.
- 5 PLATING:  
CONTACTS: 0.76µm MINIMUM GOLD ON MATING AREA, 3.8µm MINIMUM TIN-LEAD ON SOLDER TAILS, BOTH OVER 1.27µm MINIMUM NICKEL.  
SHELL: 5.1µm MINIMUM TIN.
- 6 PLATING:  
CONTACTS: 0.38µm MINIMUM GOLD ON MATING AREA, 3.8µm MINIMUM TIN-LEAD ON SOLDER TAILS, BOTH OVER 1.27µm MINIMUM NICKEL.  
SHELL: 5.1µm MINIMUM TIN.

6	NO	BLACK	787780-5
5	NO	BLACK	787780-4
2	YES	BLACK	787780-3
2	YES	NATURAL	787780-2
2	NO	BLACK	787780-1
PLATING	HIGH TEMPERATURE COMPATIBLE	HOUSING COLOR	PART NUMBER

<small>THIS DRAWING IS UNPUBLISHED. RELEASED FOR PUBLICATION BY AMP INCORPORATED. ALL RIGHTS RESERVED.</small>		JUN 30 AUG 95 M.E. SHIRK 31 AUG 95 WAYNE DAVIS 18 JUN 96 B. WALTER	<b>AMP</b> AMP Incorporated Harrisburg, PA 17105-3608
DIMENSIONS: mm 	TOLERANCES UNLESS OTHERWISE SPECIFIED: 0 PLC ± 1 PLC ± 2 PLC ±0.1 3 PLC ± 4 PLC ± ANGLES ±	PRODUCT SPEC APPLICATION SPEC SIZE: A2 SCALE: 5:1 DRAWING NO: 00779 PART: C=787780	RECEPTACLE ASSEMBLY, RIGHT ANGLE, 4 POSITION, THRU-HOLE, TYPE B, UNIVERSAL SERIAL BUS
MATERIAL: 1 FINISH: 2	CUSTOMER DRAWING	SHEET 1 OF 1 REV F	

单击下面可查看定价，库存，交付和生命周期等信息

[>>TE Connectivity\(泰科\)](#)