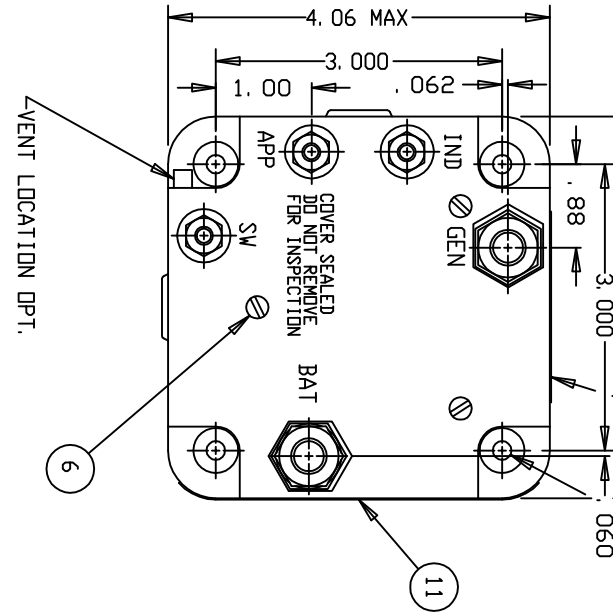


REV.	DESCRIPTION	DATE	APPROVED
A	ADDED .06 & 1.00 DIM'S	04/03/31	RS
B	0691-04 REMOVED PRELIMINARY. ADDED TYCO P/N	04/08/30	CB
C	0691-04 REMOVED ITEM 12, 13 BALDONS	04/12/09	JMK
D	12-011320 ITEM 11 WAS 39529-001 OVERLAY	12/06/18	MDM

(REMOVE FINISH FROM BOTH SIDES OF THE .44 DIA)

1 LOCATION OPTIONAL
 .196 ± .010 DIA. HOLE
 4 MTG. HOLES



CONSTRUCTION
 MAIN CONTACTS
 CONFIGURATION
 VOLTAGE
 CURRENT

DIFF. PICKUP
 REV. I DROPOUT

COIL DATA
 VOLTAGE
 PICKUP
 PULL THROUGH
 DROPOUT
 RESISTANCE AT 25°C
 PICKUP
 HOLDING
 PEAK INRUSH
 DUTY

AMBIENT TEMPERATURE
 LIFE ELECTRICAL
 WEIGHT

GASKET SEALED (VENTED)

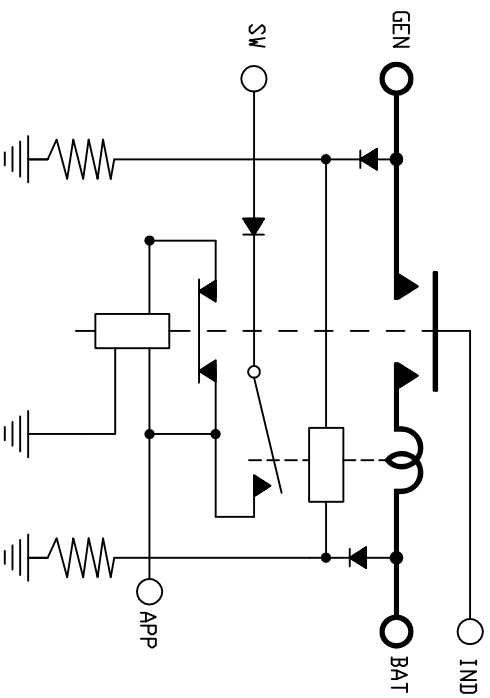
SPST N. D.
 28 VDC
 400 AMP
 1000 AMP FDR 30 SEC
 1500 AMP INRUSH

0.5 +/- 0.15 VDC
 25-50 AMPS

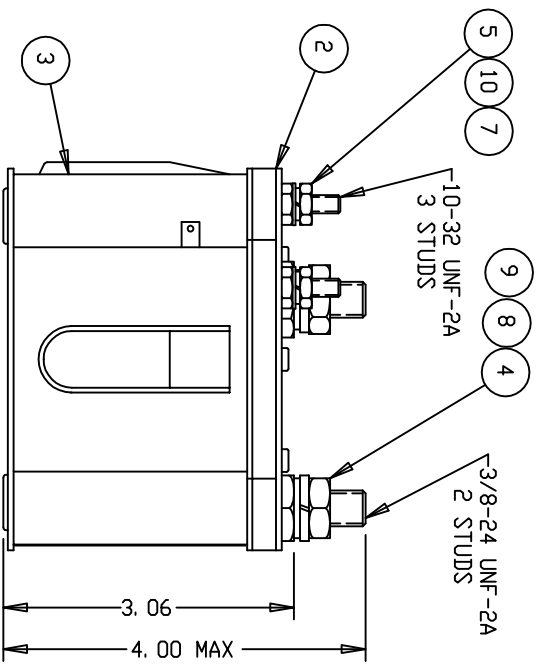
24 TD 30 VDC
 15 VOLTS MAX
 7 VOLTS MAX AT 25°C
 0.5 - 7 VOLTS

7.5 OHM +/- 20%
 80 OHM +/- 20%
 3 AMP MAX
 CONTINUOUS ECONOMIZING

-55°C TO +71°C
 50,000 CYCLES MIN
 3 LBS., 10 OZ.



NOTES:
 1. DESIGNED TO MEET THE APPLICABLE PORTIONS OF MIL-C-5026 AND MIL-R-6106.
 2. MOUNTING SURFACE SHALL PROVIDE ELECTRICAL GROUND



QTY	PART DR	IDENTIFYING NO	NAME	PLATE	DR	DATE	DR	DATE	DR	DATE
11	1	148336-001	WASHER - LOCK, NO. 10 SPLIT	STEEL						
10	3	51810-031	WASHER - LOCK 3/8 X .688 X .094 SPLIT	STEEL						
9	2	51807-071	WASHER - 5/8 X .390 X .064	STEEL						
8	2	51704-161	WASHER - 7/16 X 13/64 X .032	STEEL						
7	3	51702-851	SCREW - 4 X 1/4 PAN HD. SHT. MTL.	STEEL						
6	3	51200-020	NUT - 10-32 X 3/8 X 1/8 HEX.	BRASS						
5	3	50410-086	NUT - 3/8-24 X 5/8 X 7/32 HEX.	BRASS						
4	2	50407-166	PLATE - BASE COVER							
3	1	33491-010	PRIMARY ASSEMBLY							
2	1	33254-003	PLATE - NAME							
1	1	16043-001	PLATE - NAME							

UNLESS OTHERWISE SPECIFIED	UNLESS OTHERWISE SPECIFIED
DIMENSIONS ARE IN INCHES	TELERENCES IN
± .06	± .010
± 1	± 1

DR BY	CHK BY	ENGR	MFG	SIZE	CODE IDENT	SCALE	INDIC SHEET
RCB 04/03/31	CB 04/03/31	RSS 04/03/31	MH 04/03/31	C	74063		

DR	DATE	DR	DATE
RCB	04/03/31	RCB	04/03/31
CB	04/03/31	CB	04/03/31
RSS	04/03/31	RSS	04/03/31
MH	04/03/31	MH	04/03/31

DESCRIPTION	DATE	APPROVED
CUTOUT-REVERSE CURRENT		
400 AMP - 28VDC		

DR	DATE	DR	DATE
RCB	04/03/31	RCB	04/03/31
CB	04/03/31	CB	04/03/31
RSS	04/03/31	RSS	04/03/31
MH	04/03/31	MH	04/03/31

tyco Electronics
 120 Horton Street, Danvers, MA 01923
 400 AMP - 28VDC
 A-701DA
 REF. TE P/N 1-1616941-2

单击下面可查看定价，库存，交付和生命周期等信息

[>>TE Connectivity\(泰科\)](#)