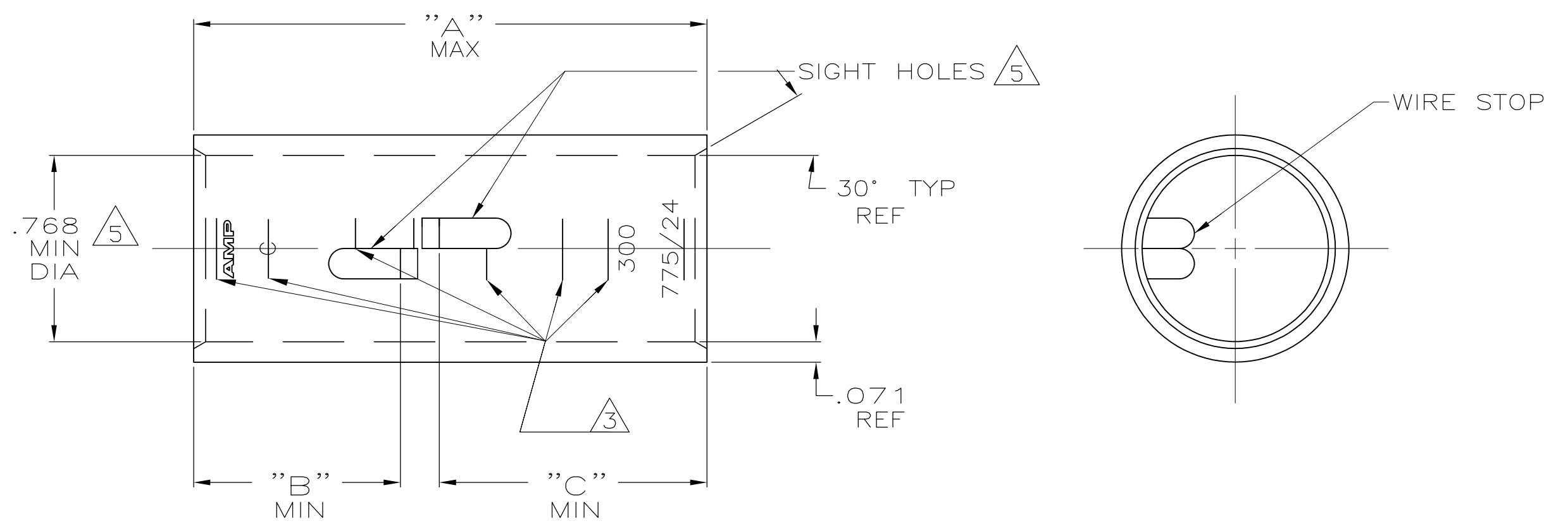


THIS DRAWING IS UNPUBLISHED. RELEASED FOR PUBLICATION
 © COPYRIGHT - By - ALL RIGHTS RESERVED.

REVISIONS					
P	LTR	DESCRIPTION	DATE	DWN	APVD
	U	ECR-13-000998	11FEB2013	PK	HS
	U1	ECR-16-012832	07SEP2016	KR	MV



- ① TIN PL .000150 MIN THK PER ASTM B-545
- ② PART NO: 324463; .116 LB.
PART NO: 1-324463-0; .116 LB.
PART NO: 2-324463-5; .132 LB.
- ③ CRIMP LOCATION MARKS ON P/N 2-324463-5 ONLY.
- ④ CLEANED, UNPLATED
- ⑤ .045 MAX BURR ALLOWED INSIDE THE WIRE BARREL ID IN AREA OF SIGHT HOLE.

1.10	.85	2.18	① ③	275-325 MCM	COPPER ASTM-B-75 ANNEALED	2-324463-5
.85	.85	1.93	④ ⑤			1-324463-0
"C"	"B"	"A"	FINISH	WIRE RANGE	MATERIAL	PART No 324463

THIS DRAWING IS A CONTROLLED DOCUMENT.

DIMENSIONS: INCHES	TOLERANCES UNLESS OTHERWISE SPECIFIED: 0 PLC ± - 1 PLC ± - 2 PLC ± - 3 PLC ± - 4 PLC ± - ANGLES ± -	DWN DK SCHRUM 4/24/89 CHK MS FEHER 4/24/89 APVD WJ VOCKROTH 11/8/89	TE Connectivity			
MATERIAL SEE TABLE	FINISH SEE TABLE	PRODUCT SPEC -	NAME SPLICE, BUTT, AMPPOWER WIRE SIZE: 300 MCM			
		APPLICATION SPEC -	SIZE A3	CAGE CODE PK	DRAWING NO C-324463	RESTRICTED TO -
CUSTOMER DRAWING			WEIGHT ②	SCALE 2:1	SHEET 1 OF 1	REV U1

单击下面可查看定价，库存，交付和生命周期等信息

[>>TE Connectivity\(泰科\)](#)