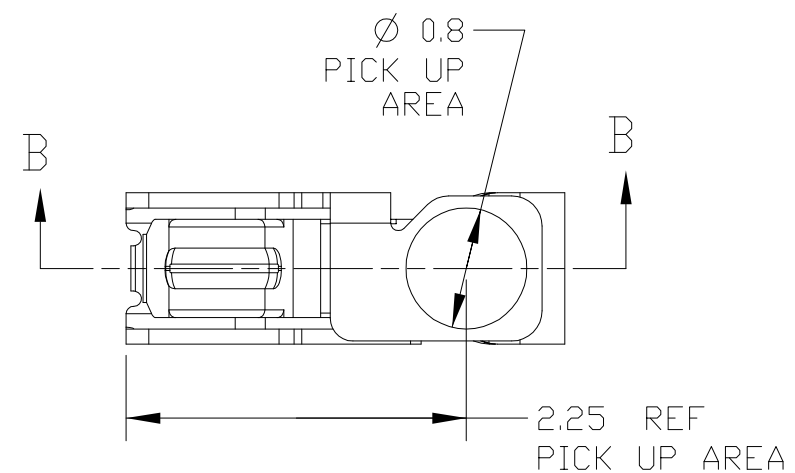
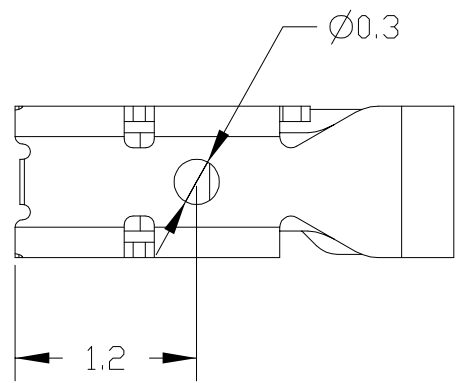
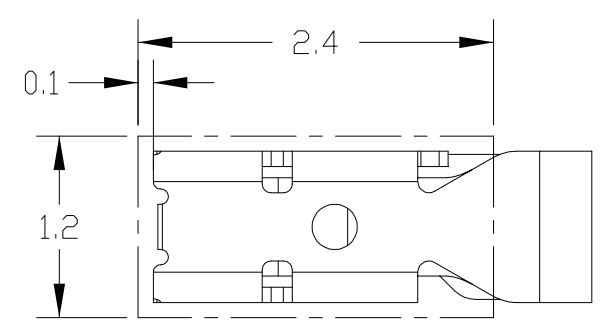
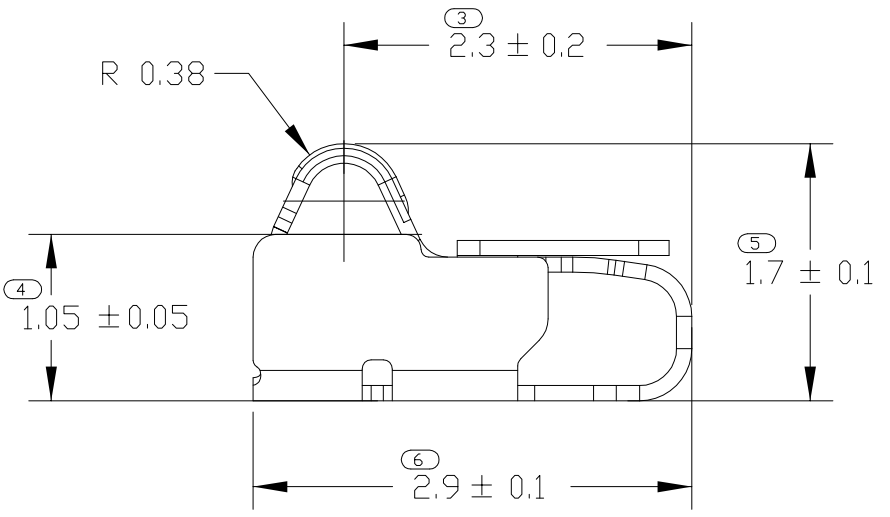
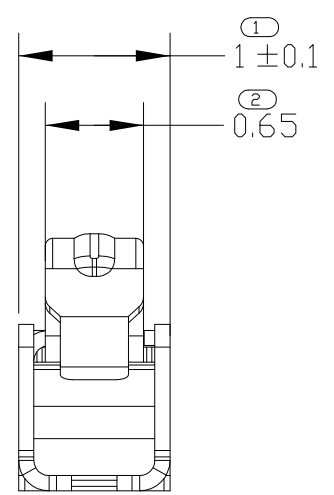
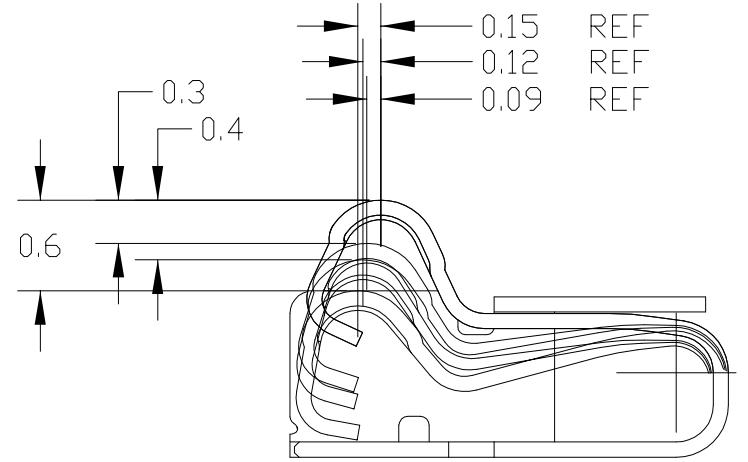


LOC	DIST	REVISIONS					
		P	LTR	DESCRIPTION	DATE	DWN	APVD
-	-		B	REVISED	05JUNE2013	IC.K	JH.K
			C	REVISED	13JUNE2013	IC.K	JH.K
			C1	REVISED	25FEB2014	IC.K	JH.K
			C2	REVISED	05FEB2014	IC.K	JH.K



AS SHOWN
 (C1) 2108611-5/6
 (C2) 2-2108611-6



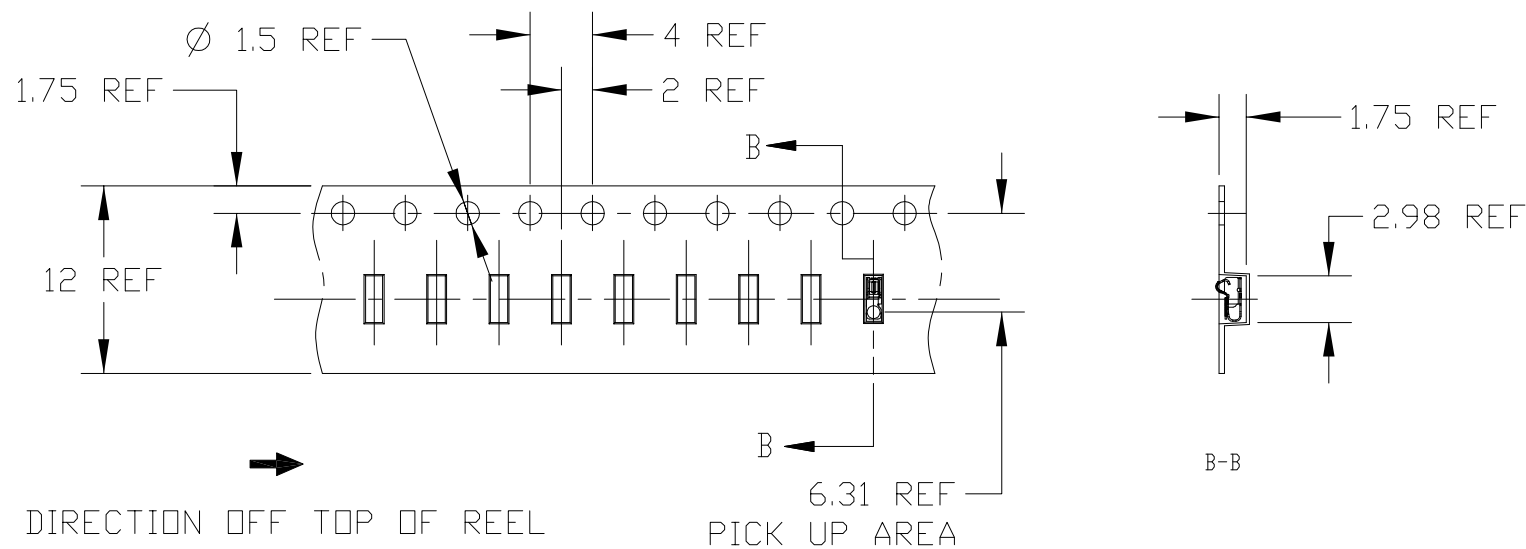
- 1 MATERIAL: COPPER ALLOY, THK.=0.1mm
- 2 FINISH: Ni UNDER PLATING ALL OVER 0.8~3.0um.
 CONTACT PLATING: Au 0.1~0.4um
 SOLDER PLATING: Au FLASH 0.05~0.35um
- 3 CUTTING BURR: 0.05mm MAX.
- (C1) 4 F/G SHOULD BE SEPARATED BASED ON THE CUSTOMER'S PART NUMBER AS BELOW TABLE

NO	PART NUMBER	CUSTOMER PART NUMBER	PRODUCT SPEC
1	2108611-5	MCE62632901	108-61186
2	2108611-6	EAG63652201	108-61186
(C2) 3	2-2108611-6	-	108-61251

THIS DRAWING IS A CONTROLLED DOCUMENT.		DWN IC KANG 05APR2013		
DIMENSIONS: mm		CHK JH KIM 05APR2013		
TOLERANCES UNLESS OTHERWISE SPECIFIED: ± 0.15		APVD JH KIM 05APR2013	NAME	
0-PLC \pm 1-PLC ± 0.5 2-PLC ± 0.13 3-PLC ± 0.013 4-PLC ± 0.0001 ANGLES \pm		PRODUCT SPEC SEE TABLE 4	SPRING FINGER 1.7H	
MATERIAL - 1		APPLICATION SPEC -	SIZE A3	CAGE CODE 00779
FINISH - 2		WEIGHT -	DRAWING NO C-2108611	RESTRICTED TO -
CUSTOMER DRAWING			SCALE 20:1	SHEET 1 OF 3
			REV C2	

LOC	DIST	REVISIONS					
		P	LTR	DESCRIPTION	DATE	DWN	APVD
-	-			SEE SHEET 1			

① 4 <2108611-5 : FOR MCE62632901>

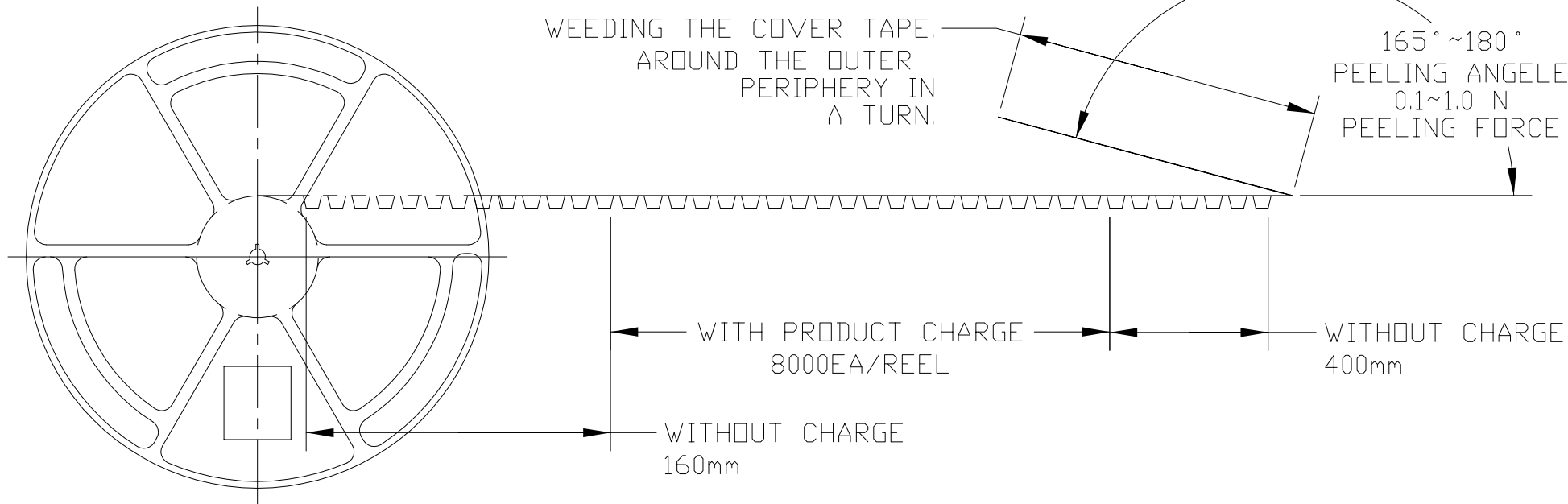
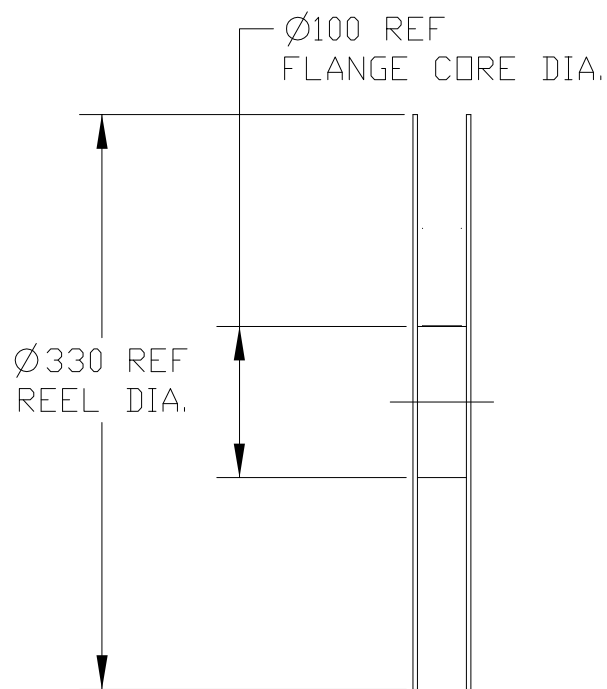


① **TE**

MCE62632901-YYYYMMDD-*****-HK000120
 SPEC: 1.7H SPRING FINGER WITH EMBOSS
 Company Name: TE CONNECTIVITY
 Tyco Part Number : 2108611-5

RoHS H/F

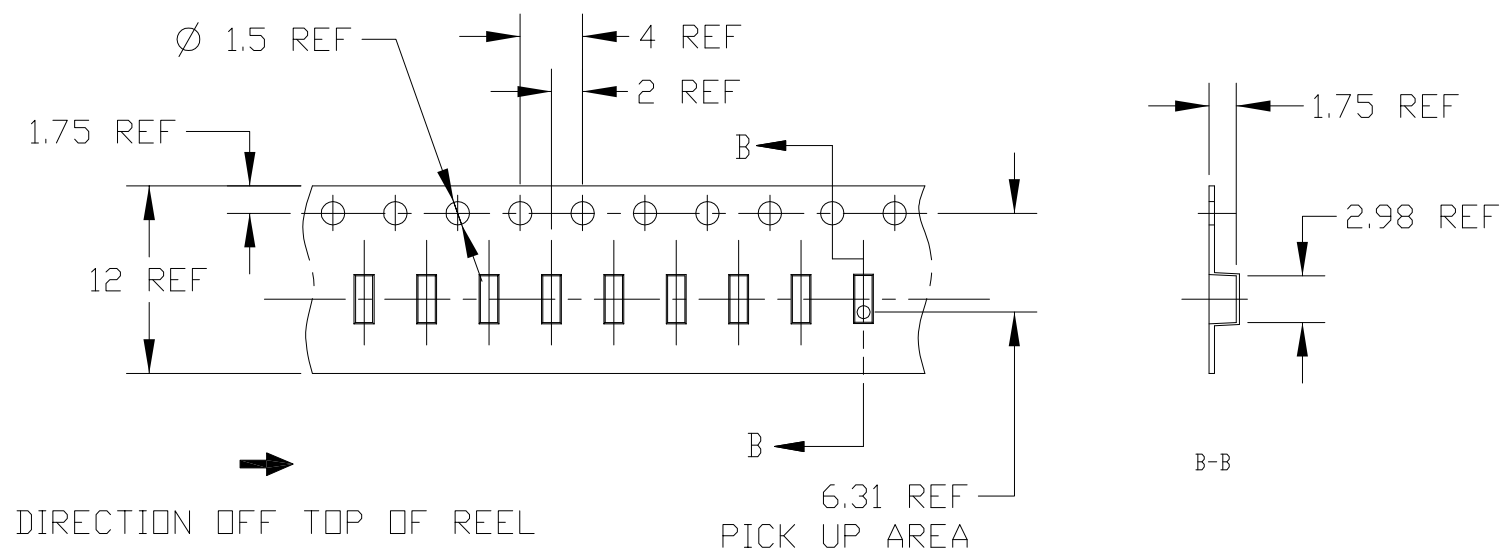
- 1. LG PART NO.
- 2. FINAL INSPECTION(YYYMMDD)
- 3. VENDOR PRODUCTION LOT NO.
- 4. VENDOR CODE



THIS DRAWING IS A CONTROLLED DOCUMENT.		DWN IC KANG 05APR2013	TE TE Connectivity		
DIMENSIONS: mm		CHK JH KIM 08FEB2013			
TOLERANCES UNLESS OTHERWISE SPECIFIED: ± 0.15		APVD JH KIM 08FEB2013	NAME SPRING FINGER 1.7H		
0-PLC \pm 1-PLC ± 0.5 2-PLC ± 0.13 3-PLC ± 0.013 4-PLC ± 0.0001 ANGLES \pm FINISH -		PRODUCT SPEC 108-XXXXX	SIZE A3	CAGE CODE 00779	DRAWING NO C=2108611
MATERIAL -		WEIGHT -	RESTRICTED TO	-	
CUSTOMER DRAWING			SCALE 20:1	SHEET 2 OF 3	REV C2

LOC	DIST	REVISIONS					
		P	LTR	DESCRIPTION	DATE	DWN	APVD
-	-			SEE SHEET 1			

① 2108611-6 : FOR EAG63652201



①

EAG63652201-YYYYMMDD-*****-HK000120

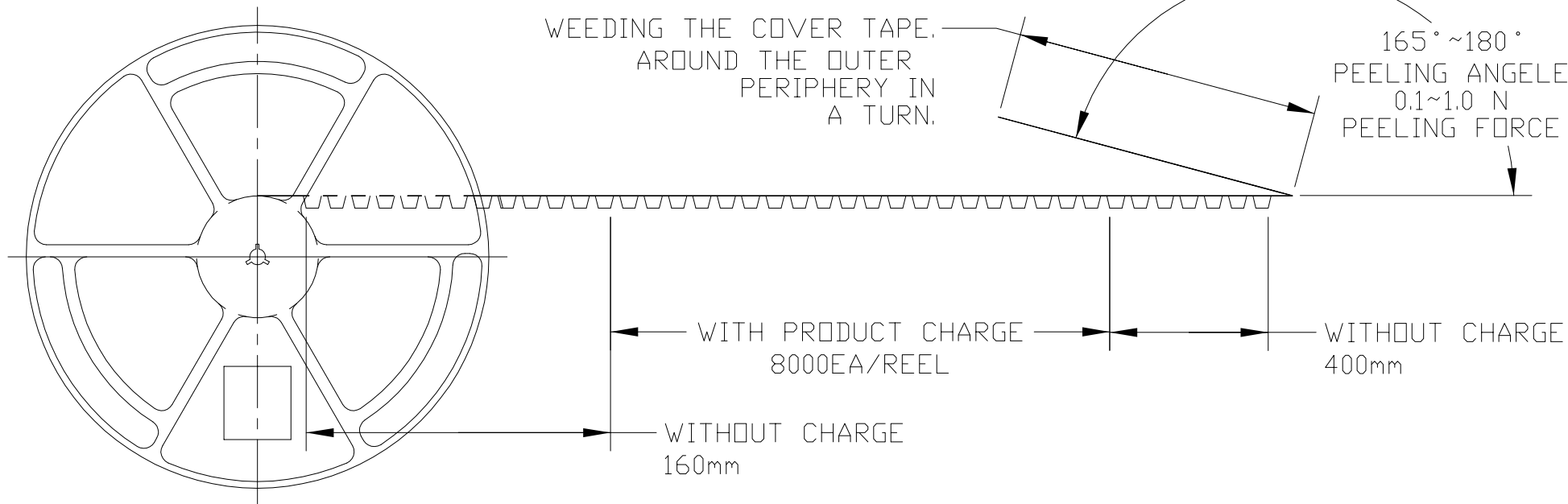
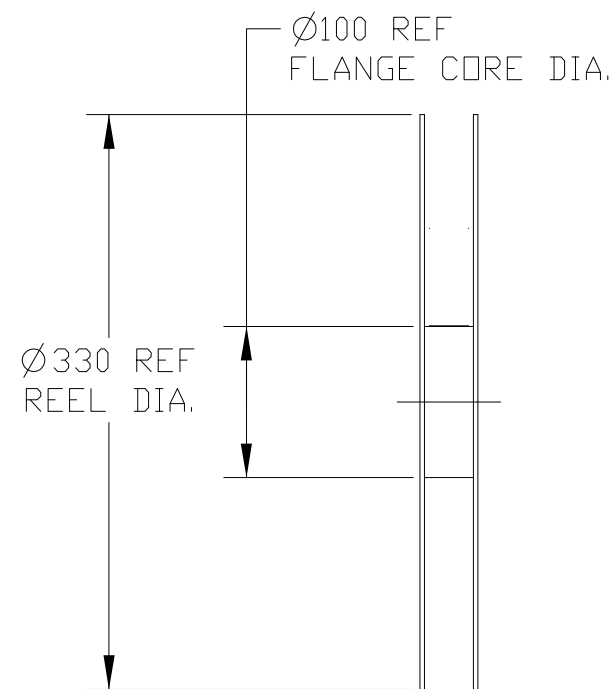
SPEC: ① 1.7H SPRING FINGER WITH ② EMBOSS ③

Company Name: TE CONNECTIVITY
Tyco Part Number : 2108611-5

RoHS

H/F

- 1. LG PART NO. 2. FINAL INSPECTION(YYYMMDD)
- 3. VENDOR PRODUCTION LOT NO. 4. VENDOR CODE



THIS DRAWING IS A CONTROLLED DOCUMENT.		DWN IC KANG 05APR2013		TE Connectivity	
		CHK JH KIM 08FEB2013			
DIMENSIONS: mm 		TOLERANCES UNLESS OTHERWISE SPECIFIED: ±0.15		APVD JH KIM 08FEB2013	
		0-PLC ± 1-PLC ±0.5 2-PLC ±0.13 3-PLC ±0.013 4-PLC ±0.0001 ANGLES ± FINISH -		NAME	
MATERIAL -		PRODUCT SPEC 108-XXXXX		SPRING FINGER 1.7H	
		APPLICATION SPEC		SIZE	RESTRICTED TO
		WEIGHT -		CAGE CODE	
		CUSTOMER DRAWING		DRAWING NO	
				A300779	
				©=2108611	
				SCALE 20:1	
				SHEET 3 OF 3	
				REV C2	

单击下面可查看定价，库存，交付和生命周期等信息

[>>TE Connectivity\(泰科\)](#)