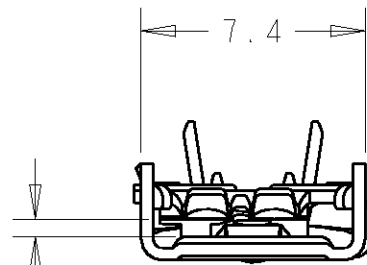
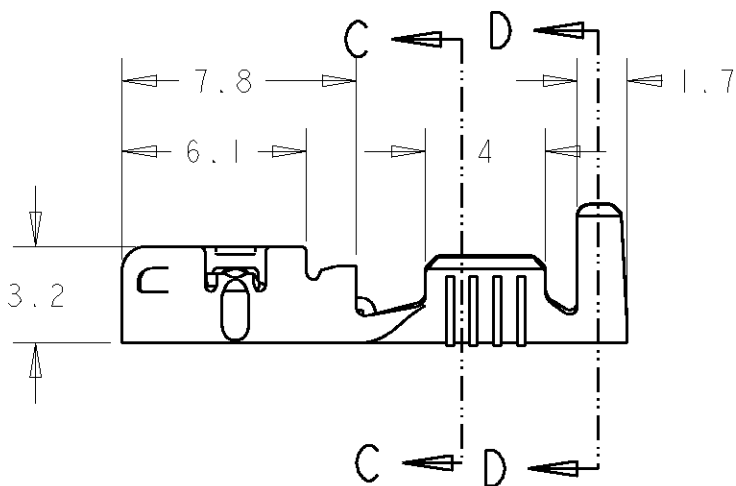
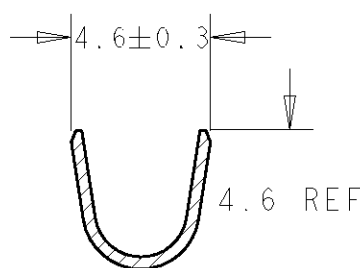
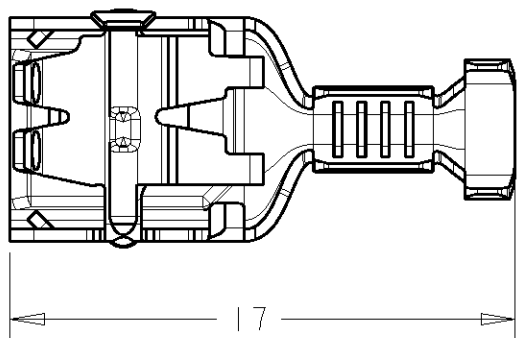


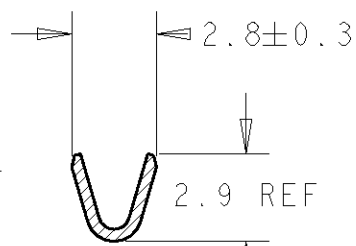
| LOC | DIST | REVISIONS               |          |      |      |  |
|-----|------|-------------------------|----------|------|------|--|
| P   | LTR  | DESCRIPTION             | DATE     | DWN  | APVD |  |
| AL  | 2    |                         |          |      |      |  |
|     | F    | See ECR 05-017875       | JAN 2006 | J.S. | J.L. |  |
|     | G    | UPDATED TOLERANCE TABLE | FEB 2006 | J.L. | J.L. |  |



Para lengüeta de 0.8 mm  
For 0.8mm tab thickness

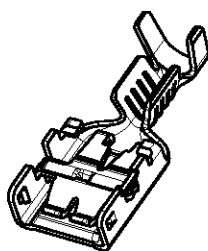


SECTION D-D  
SCALE 4:1

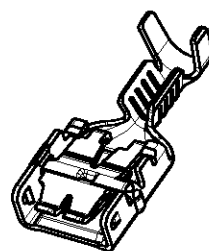


SECTION C-C  
SCALE 4:1

Left-sided product



Right-sided product



|               |                |                        |
|---------------|----------------|------------------------|
| 336074-3      | Latón<br>Brass | Preestañado<br>Pre-Tin |
| 336074-1      | Latón<br>Brass | -                      |
| Guion<br>Dash | Material       | Acabado<br>Finish      |

Rango de hilo de 0,32 a 0,75 mm<sup>2</sup>  
Wire range from 0.32 to 0.75 mm<sup>2</sup>

Diametro de aislante max 3,0 mm  
Max. Insulation Diameter 3.0 mm

|  |                  |           |   |           |            |               |
|--|------------------|-----------|---|-----------|------------|---------------|
| DIMENSIONS:<br>mm                      | DWN<br>J. Saló   | 22 Dec 04 | MATERIAL  | Table     | FINISH     | Table         |
|  | CHK<br>J. Lázaro | 22 Dec 04 | Tyco Electronics AMP España, S.A.<br>Barcelona. Spain.                        |           |            |               |
| TOLERANCES UNLESS OTHERWISE SPECIFIED: | APVD             | -         |   |           |            |               |
| 0 PLC ±0.5                             | PRODUCT SPEC     | 108-22128 | NAME<br>E-SPRING CONTACT 6,35 Receptaculo<br>6.35 Receptacle E-SPRING CONTACT |           |            |               |
| 1 PLC ±0.5                             | APPLICATION SPEC | 114-22017 | SIZE  | CAGE CODE | DRAWING NO | RESTRICTED TO |
| 2 PLC ±                                | WEIGHT           | -         | A4  | 00779     | C=336074   | -             |
| 3 PLC ±                                | CUSTOMER DRAWING |           | SCALE   | 4:1       | SHEET      | 1 OF 1        |
| 4 PLC ±                                |                  |           |   |           |            | REV G         |
| ANGLES ±                               |                  |           |   |           |            |               |

单击下面可查看定价，库存，交付和生命周期等信息

[>>TE Connectivity\(泰科\)](#)