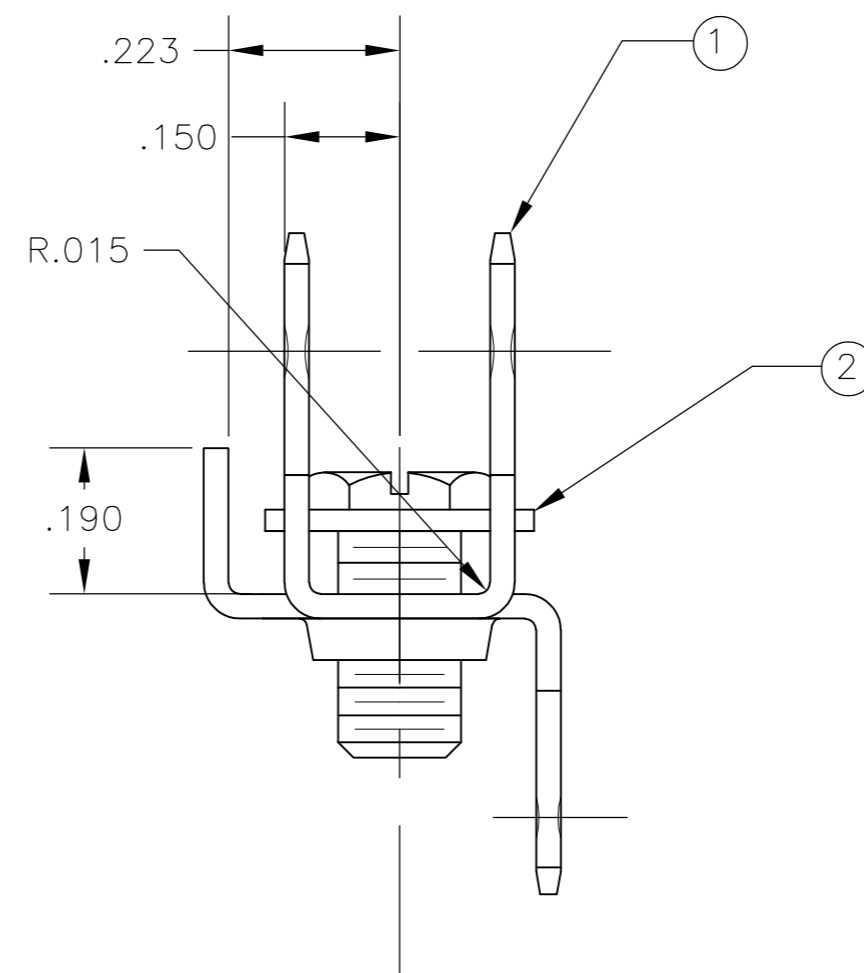
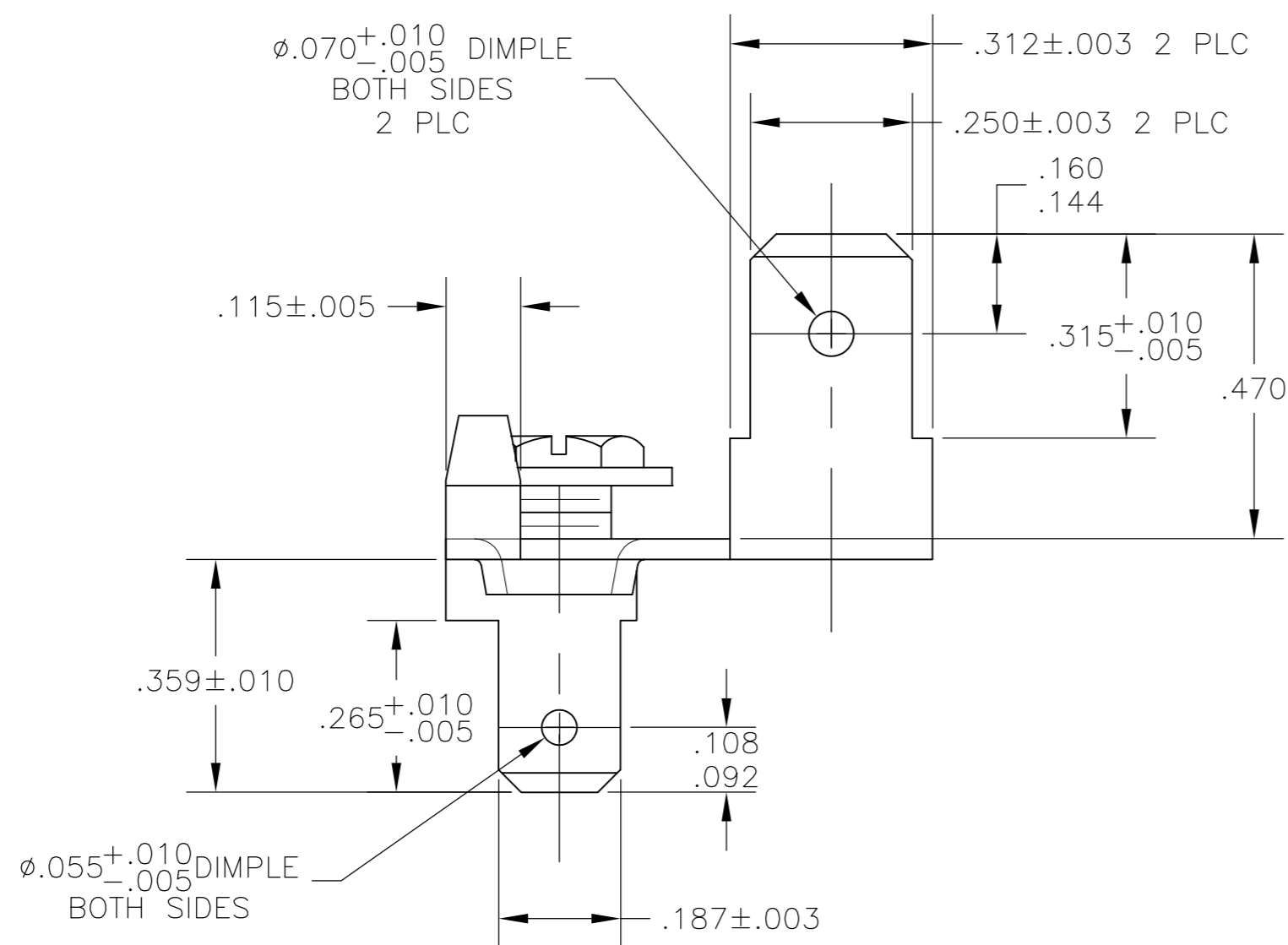
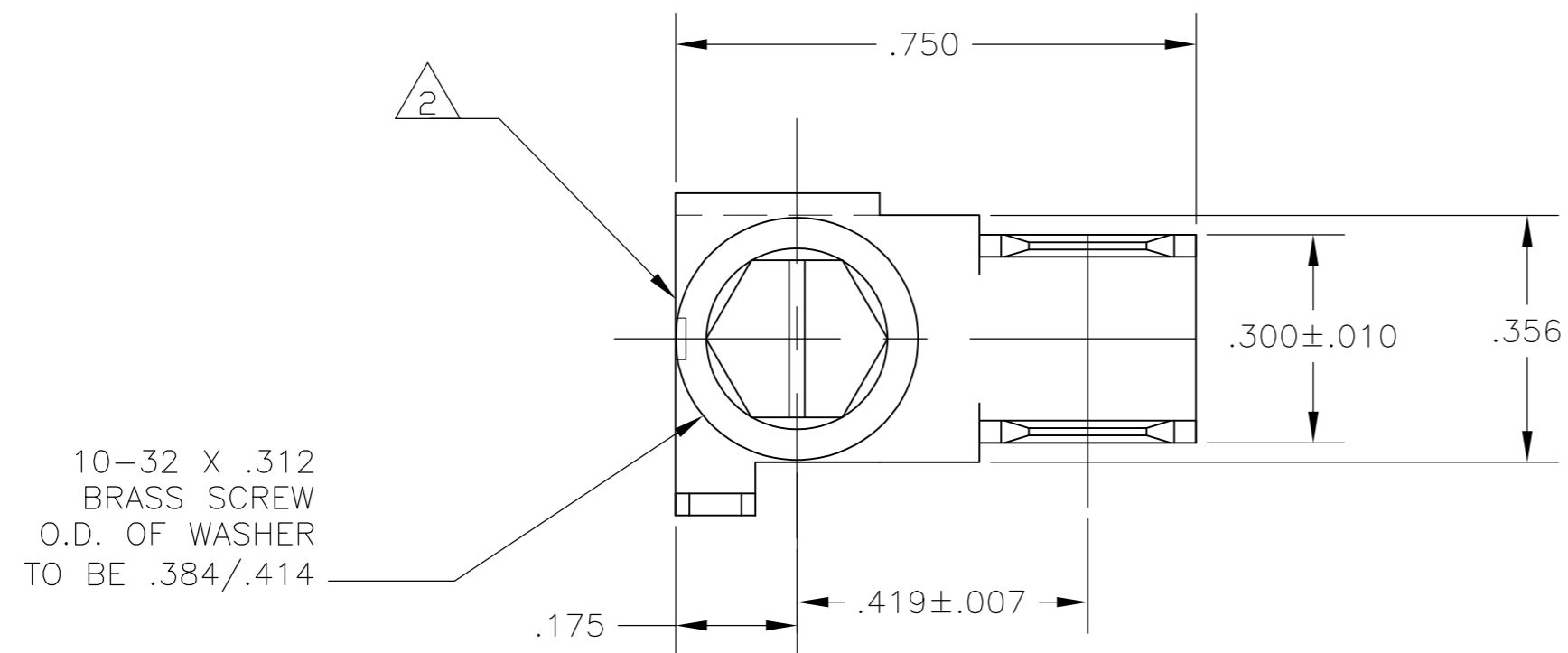


THIS DRAWING IS UNPUBLISHED. RELEASED FOR PUBLICATION
 © COPYRIGHT BY TYCO ELECTRONICS CORPORATION. ALL RIGHTS RESERVED.

LOC		DIST		REVISIONS			
P	LTR	DESCRIPTION		DATE	DWN	APVD	
	A1	REL PER ECR 07-014045		14JUN07	JR	JK	



- 1 MATERIAL: .032±.001 THK BRASS, 100-86, HEAT TREAT 0.082
- 2 .010 MAX CUT-OFF ALLOWED
- 3 ASSEMBLY SCREW AND TORQUE 2-8 LB-IN
- 4 THREADS DEFORMED SO AS NOT TO ALLOW REMOVAL OF THE SCREW.
- 5 PART TO BE CLEAN AND OIL FREE
- 6 MATERIAL: HEX HEAD WASHER .394 DIA, #10-32 .312 LONG. BRASS SCREW (ELECTRICAL TYPE)
- 7 MATERIAL: HEX HEAD WASHER .394 DIA, #10-32 .312 LONG. BRASS SCREW (ELECTRICAL TYPE) BRIGHT NICKEL FINISH

1	7	-	1	1	T20737542	FASTON TAB ASSEMBLY NICKEL PLATED BRASS SCREW	521948-2
-	1	6	1	1	T20737542	FASTON TAB ASSEMBLY BRASS SCREW	521948-1
SCREW 1742447-2	2	SCREW 1742447-1	2	FASTON TAB 1742446-1	1	EMERSON P/N	DESCRIPTION
						PART NO.	

DIMENSIONS:		TOLERANCES UNLESS OTHERWISE SPECIFIED:		APVD		NAME	
INCHES		0 PLC	± -	JR RUTH	10JUL06	Tyco Electronics Corporation Harrisburg, Pa 17105-3608	
		1 PLC	± -	CHK	10JUL06	ASSEMBLY, TAB, FASTON, .250 AND 187 SERIES	
		2 PLC	± -	K RANDOLPH		SIZE	CAGE CODE
		3 PLC	± .005	APVD	10JUL06	A2	00779
		4 PLC	± -	K RANDOLPH		SCALE	DRAWING NO
		ANGLES	± 1°	PRODUCT SPEC		4:1	521948
MATERIAL		FINISH		APPLICATION SPEC		SHEET	OF
-		-		WEIGHT	-	1	1
				CUSTOMER DRAWING		REV	A1

单击下面可查看定价，库存，交付和生命周期等信息

[>>TE Connectivity\(泰科\)](#)