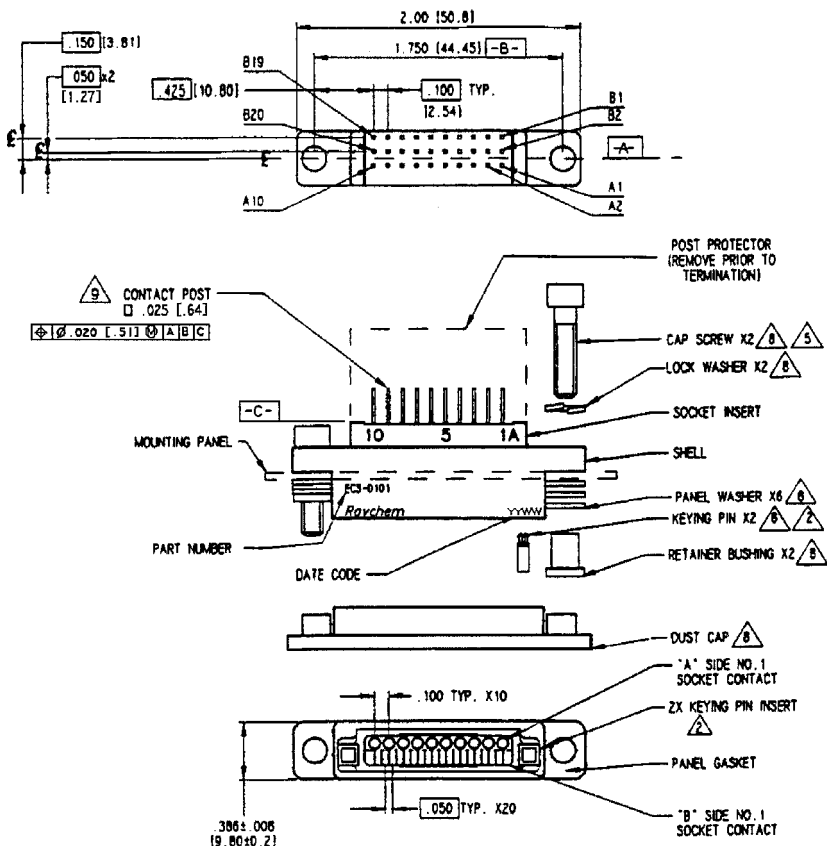


BOXMOUNT HYBRID 1", PRE-TINNED LEADS



If this document is printed it becomes uncontrolled.
Check with the web for latest revision.

NOTES:

1. THIS BOXMOUNT RECEPTACLE MATES WITH A MTC PLUG CONTAINING PIN INSERTS. REFER TO APPLICABLE RAYCHEM SPECIFICATION CONTROL DRAWING FOR DETAILS.
2. TOLERANCES: UNLESS OTHERWISE SPECIFIED
XXX.00(.13)
XX.02(.5)
3. FOR KEYING INFORMATION, SEE RAYCHEM DRAWING D-659-0080.
4. THIS BOX MOUNT RECEPTACLE IS REAR PANEL MOUNTED BY REMOVING AS MANY PANEL WASHERS AS REQUIRED TO ACCOMMODATE THE THICKNESS OF THE PANEL BEING USED.
5. DIMENSIONS ARE IN INCHES
[BRACKETED DIMENSIONS ARE IN MILLIMETERS]
△ THESE ITEMS SUPPLIED UNASSEMBLED.
6. CAP SCREW INSTALLATION TORQUE 14-16 IN/LBS.
7. LEADS PRE-TINNED WITH Sn63 SOLDER.

| | | | | | |
|--------------------------------|------------------------------------|--------------------------------------|------------------------------------|---------------------------|------------------------|
| DRAWN Engineering | R TREADWELL <i>R. Treadwell</i> | APPROVED Product Manager | P CONVERS <i>[Signature]</i> | REPLACES REV. A | 95FEB9 |
| APPROVED Development | C ROLLAND <i>[Signature]</i> | APPROVED Quality Assurance | B DAVILLIERS <i>[Signature]</i> | PROJECT NUMBER | CAD NAME: ECS101-1.PCX |

单击下面可查看定价，库存，交付和生命周期等信息

[>>TE Connectivity\(泰科\)](#)