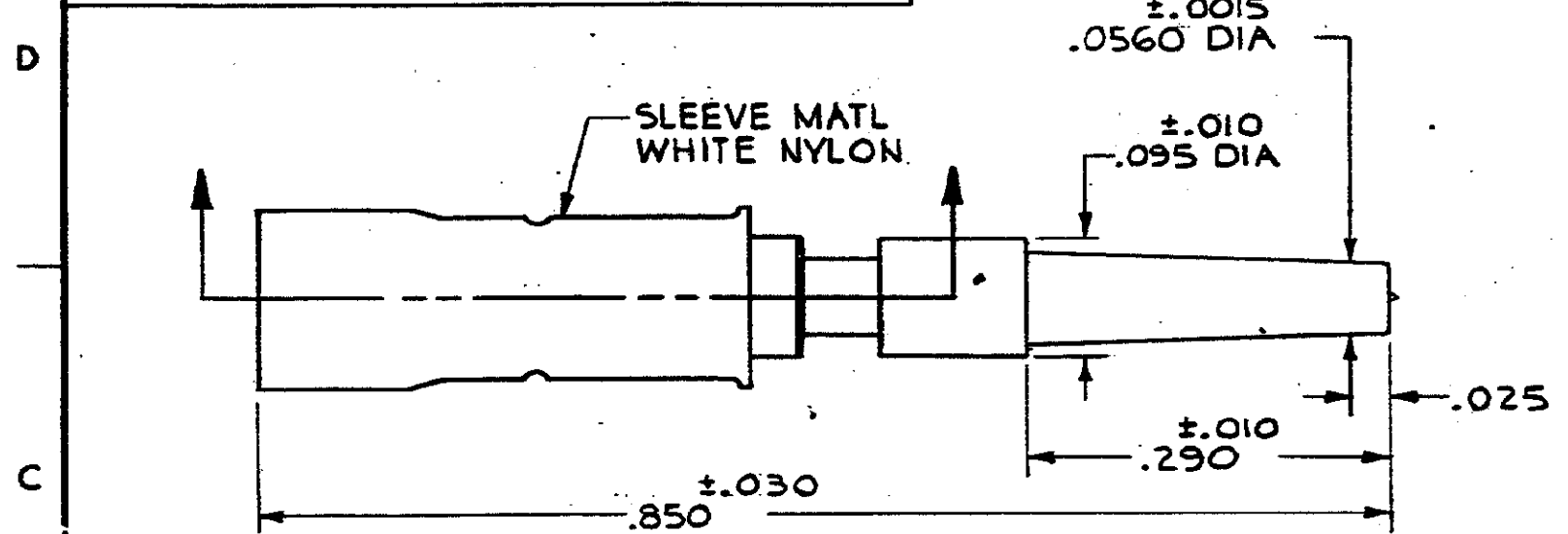


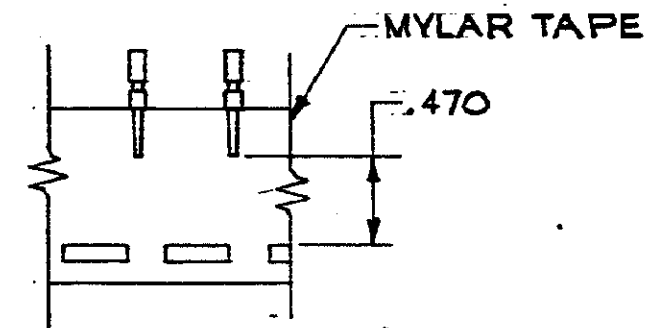
DRAWING MADE IN THIRD ANGLE PROJECTION

© COPYRIGHT 1973 BY AMP INCORPORATED, HARRISBURG, PA.
ALL INTERNATIONAL RIGHTS RESERVED. AMP INCORPORATED PRODUCTS
COVERED BY U. S. AND FOREIGN PATENTS AND/OR PATENTS PENDING.

REVISIONS						
P	F	ZONE	LYR	DESCRIPTION	DATE	APPROVED
✓			E	REV; ECN DF-0488	10/10/73	JTC

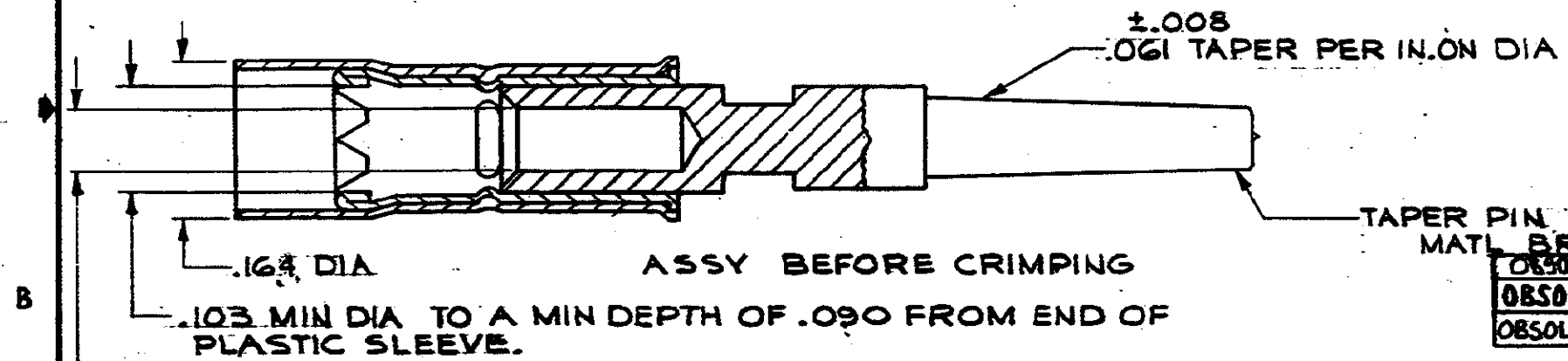


WIRE RANGE 20-18 AWG, INSULATION RANGE .060 - .100 DIA.



TAPE MOUNTED ASSY NO'S 42634-4, -5, -6

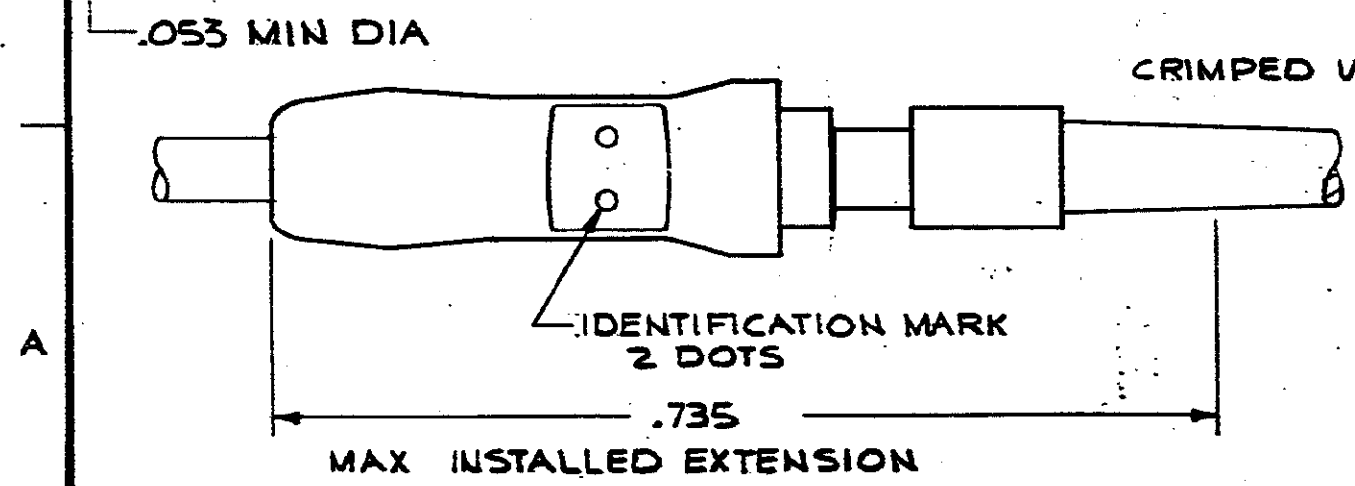
SCALE 1:1



ASSY BEFORE CRIMPING

TAPER PIN MATL BRASS

PART NO	DESCRIPTION
42634-6	AU.00003 OVER .00005 NI. ON TAPE
42634-5	SILVER.0002 THK ON TAPE
42634-4	BRIGHT TIN-LEAD, .0002 THK, ON TAPE
42634-3	GOLD.000030 OVER.000050 NI
42634-2	SILVER .0002 THK
42634-1	BRIGHT TIN-LEAD, .0002 THK



CRIMPED VERSION

IDENTIFICATION MARK 2 DOTS

MAX INSTALLED EXTENSION

UNLESS OTHERWISE SPECIFIED DIMENSIONS ARE IN INCHES. TOLERANCES ON: DECIMALS ±.015 ANGLES ±	CONTRACT NO	AMP INCORPORATED Harrisburg, Pa.	
	DR J. PENICA 6-11-73	NAME TAPER PIN ASSY "53" SERIES P.I.D.G.	
	CHK Callahan 6-12-73	SIZE B	CODE IDENT NO 00779
	APPO [Signature] 6-12-73	NUMBER 42634	SHEET
MATERIAL SEE CALLOUT	DSGN APPO	SCALE 8:1	
FINISH	OTHER APPO	PART NO	

AMP 1470-15 (1-73)

CUSTOMER DRAWING

单击下面可查看定价，库存，交付和生命周期等信息

[>>TE Connectivity\(泰科\)](#)