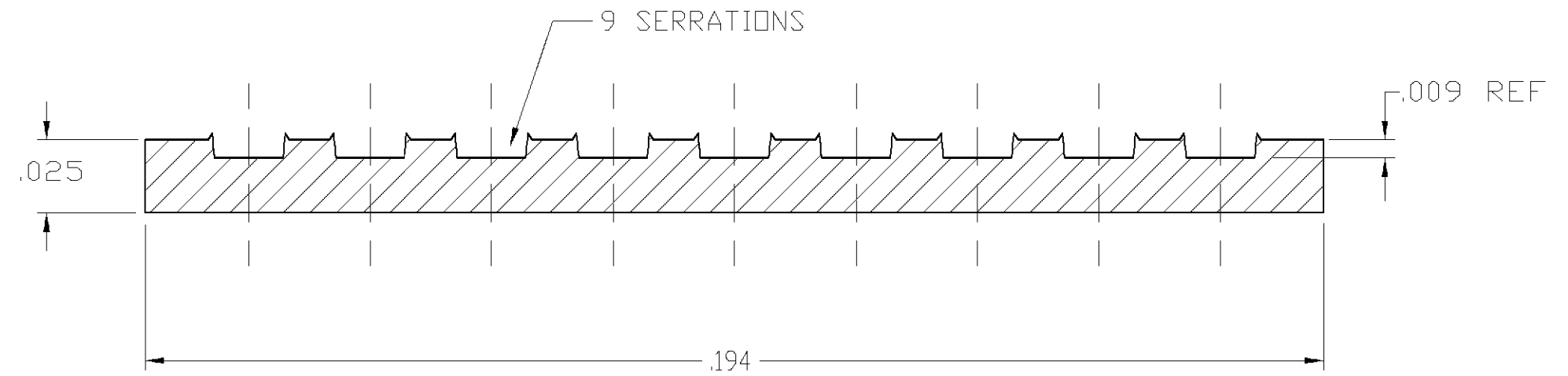
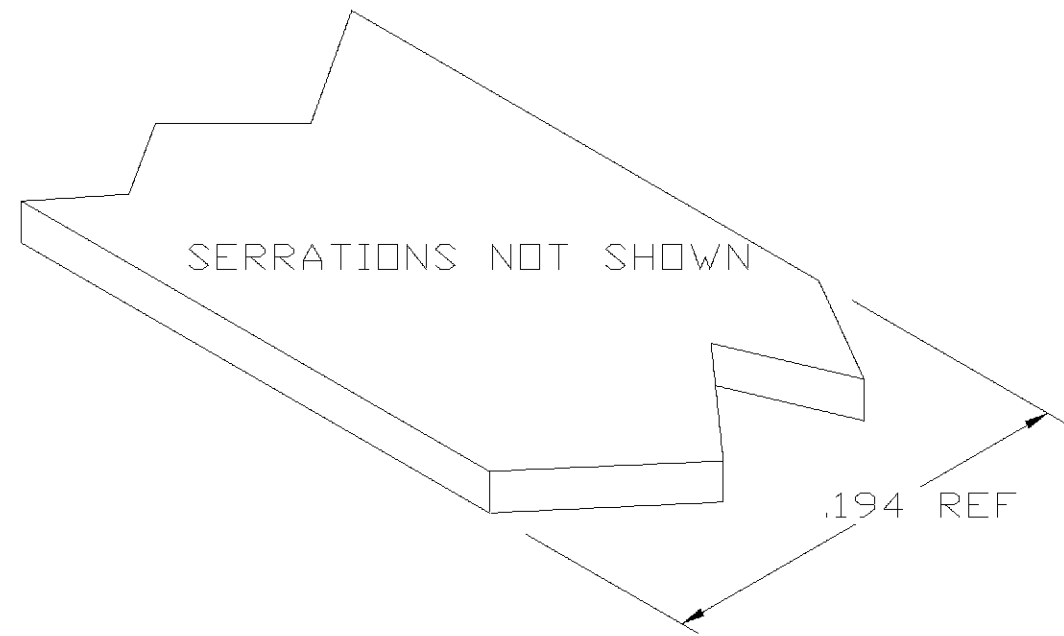


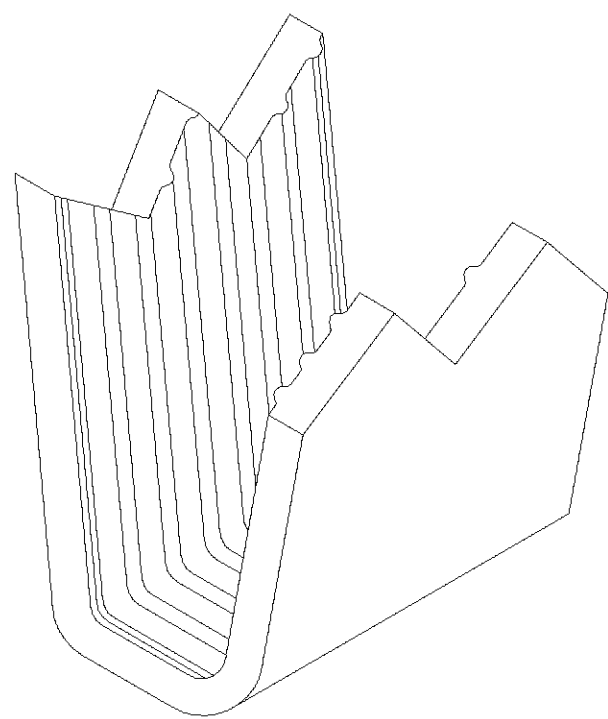
THIS DRAWING IS UNPUBLISHED. RELEASED FOR PUBLICATION
 © COPYRIGHT BY TYCO ELECTRONICS CORPORATION. ALL RIGHTS RESERVED.

LOC	DIST	REVISIONS			
P	LTR	DESCRIPTION	DATE	DWN	APVD
AF	50	A	ADDED -2 PER OG63-0069-02	13JUN02	MF EH

- 1 CRIMPBAND MATERIAL PROVIDED IN CONTINUOUS STRIP.
- 2 REFERENCE DESCRIPTIVE PART NUMBER 8R25TB.
- 3 420 FEET PER REEL. PIECES PER REEL DETERMINED BY APPLICATION TOOLSET.
- △4 SPLICE FREE REEL.
- △5 PRELIMINARY - NOT FOR PRODUCTION.



TYP. CROSS SECTION



PARTIAL FORMED VIEW (REF)
FORMED BY APPLICATION TOOLING

△5 △4	1601975-2
	1601975-1
PART NUMBER	

THIS DRAWING IS A CONTROLLED DOCUMENT.		DWN 11JUN2002 MICHAEL S. FEHER	Tyco Electronics Corporation Harrisburg, PA 17105-3608																			
DIMENSIONS: INCHES		CHK 11JUN2002 EDWARD HOWARD																				
TOLERANCES UNLESS OTHERWISE SPECIFIED:		APVD 11JUN2002 EDWARD HOWARD	NAME - CRIMPBAND, MTM																			
<table border="0"> <tr><td>0 PLC</td><td>±</td><td>-</td></tr> <tr><td>1 PLC</td><td>±</td><td>-</td></tr> <tr><td>2 PLC</td><td>±</td><td>-</td></tr> <tr><td>3 PLC</td><td>±</td><td>.005</td></tr> <tr><td>4 PLC</td><td>±</td><td>-</td></tr> <tr><td>ANGLES</td><td>±</td><td>-</td></tr> </table>		0 PLC	±	-	1 PLC	±	-	2 PLC	±	-	3 PLC	±	.005	4 PLC	±	-	ANGLES	±	-	PRODUCT SPEC -	SIZE CAGE CODE DRAWING NO RESTRICTED TO	
0 PLC	±	-																				
1 PLC	±	-																				
2 PLC	±	-																				
3 PLC	±	.005																				
4 PLC	±	-																				
ANGLES	±	-																				
MATERIAL UNS C26000 BRASS		FINISH TIN PLATE	WEIGHT -	A2 00779 C=1601975																		
CUSTOMER DRAWING			SCALE 1:1	SHEET 1 OF 1 REV A																		

单击下面可查看定价，库存，交付和生命周期等信息

[>>TE Connectivity\(泰科\)](#)