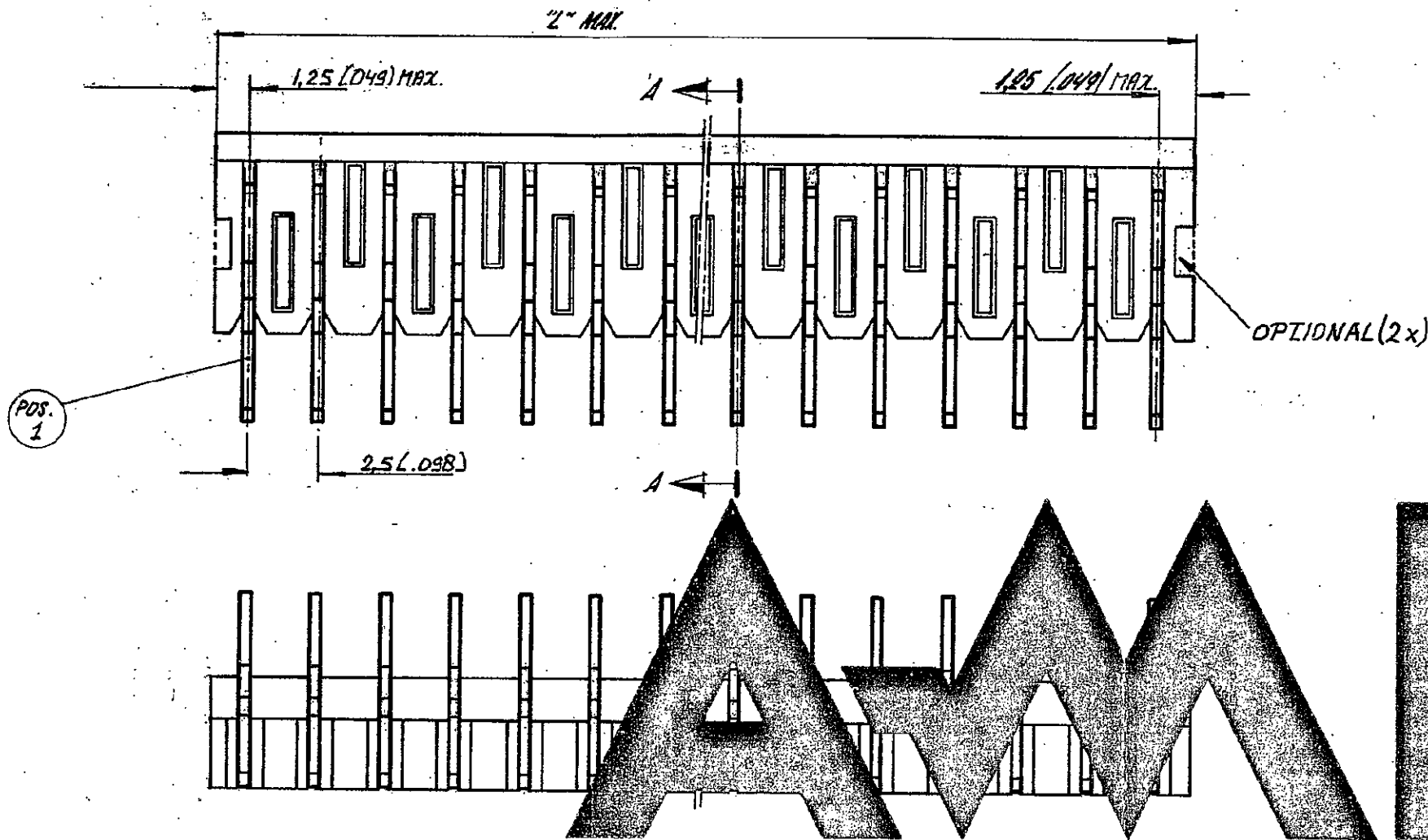


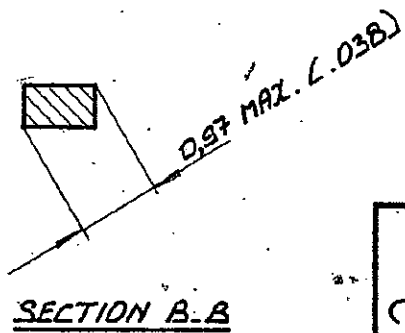
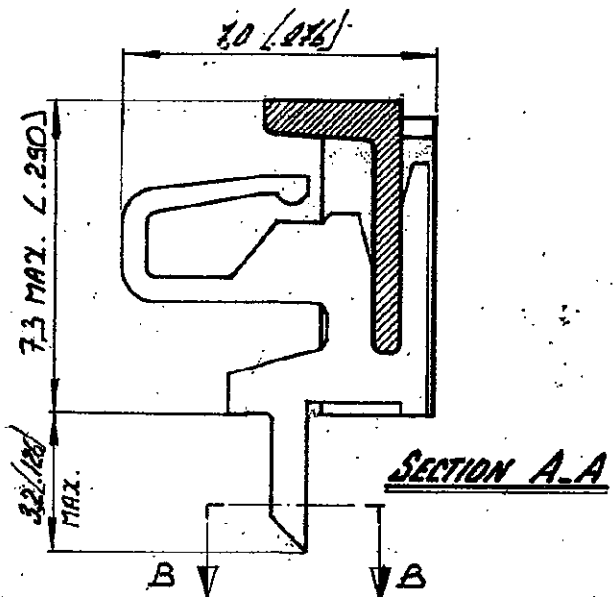
DRAWING MADE IN AMERICAN PROJECTION




ORDER NUMBER	NUMBER OF POSITIONS	"L" MAX.	
		M.M.	INCH.
161600-2	2	5.0	.197
-3	3	7.5	.295
-4	4	10.0	.394
-5	5	12.5	.492
-6	6	15.0	.591
-7	7	17.5	.689
-8	8	20.0	.787
-9	9	22.5	.886
-10	10	25.0	.984
-11	11	27.5	1.083
-12	12	30.0	1.181
-13	13	32.5	1.280
-14	14	35.0	1.378
-15	15	37.5	1.476
-16	16	40.0	1.575
-17	17	42.5	1.673
-18	18	45.0	1.772
-19	19	47.5	1.870
2-161600-0	20	50.0	1.969

AMP

MATERIAL: HOUSING: P.C., 90% GLASS FILLED.
 CONTACT: PHOSPHORBRONZE
 PLATING: TIN-LEAD 93/7



SEE TABLE.	SEE ABOVE.	SEE ABOVE.
ORDER NO.	MATERIAL	PLATING
CUSTOMER COPY FOR REFERENCE ONLY		
OR DATE PVT 17-4-81	©1978 BY AMP-HOLLAND N.V. ALL RIGHTS RESERVED. AMP PRODUCTS COVERED BY PATENTS AND/OR PATENTS PENDING.	
CHK DATE	 AMP-HOLLAND N.V. 's-Hertogenbosch	
DE DATE		
APP DATE H. H. H. 2/14/81	WIRE-RANGE	INSUL.-RANGE
	SCALE N.T.S.	NO C-161600
	SIZE B	REV E
NAME: 20 POS. MALE HEADER ASSY. RIGHT ANGLED FOR MINI-MATEX INTERCONNECTION SYSTEM, PITCH: 2.5 M.M.		

单击下面可查看定价，库存，交付和生命周期等信息

[>>TE Connectivity\(泰科\)](#)